

FILED IN THE OFFICE OF THE CITY CLERK OF NEWPORT BEACH, THIS ____ DAY OF _____, 20____.

BOUNDARY OF PROPOSED ASSESSMENT DISTRICT No. 117

CITY OF NEWPORT BEACH, COUNTY OF ORANGE
STATE OF CALIFORNIA

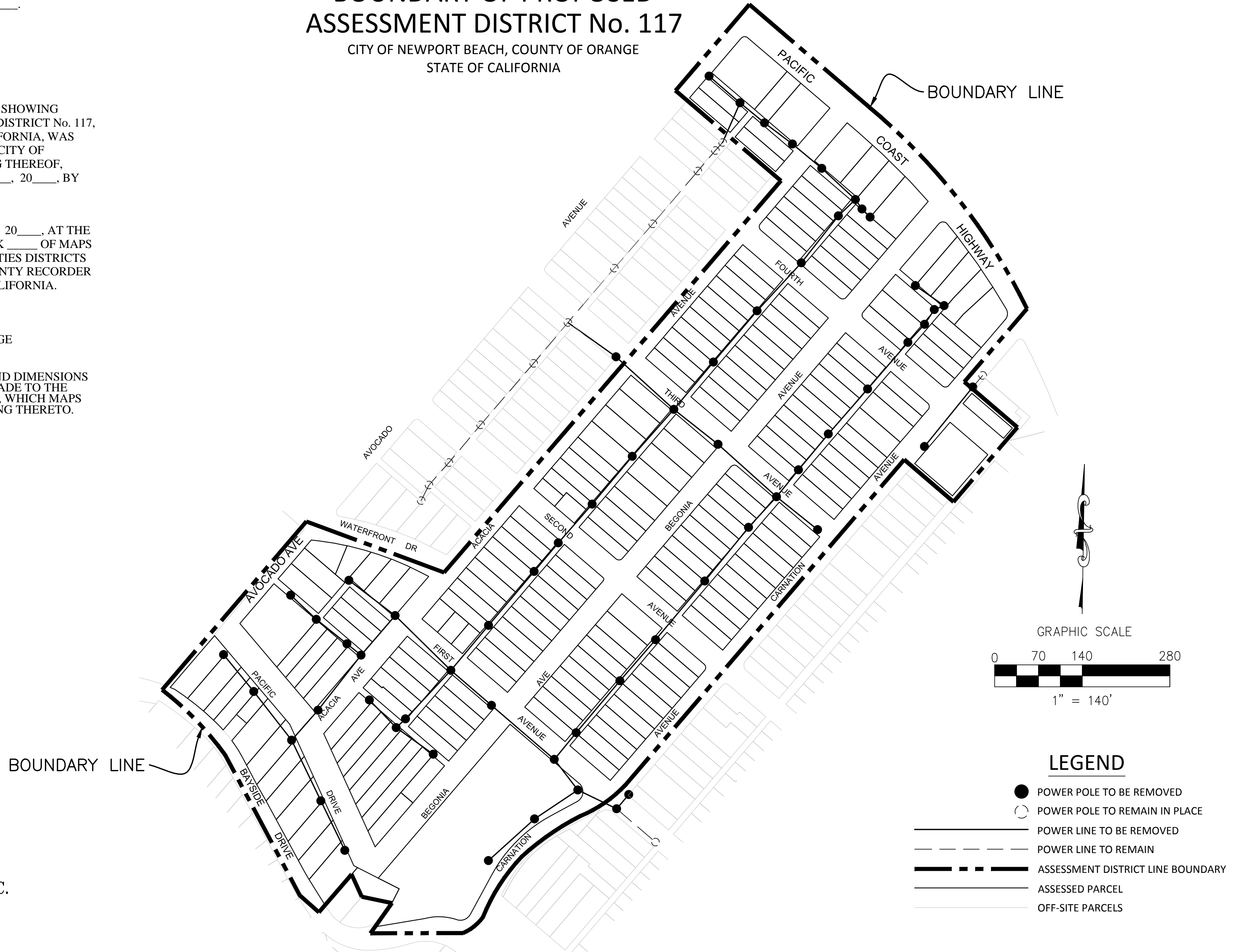
CITY CLERK
CITY OF NEWPORT BEACH

I HEREBY CERTIFY THAT THE WITHIN MAP SHOWING PROPOSED BOUNDARIES OF ASSESSMENT DISTRICT No. 117, CITY OF NEWPORT BEACH, STATE OF CALIFORNIA, WAS APPROVED BY THE CITY COUNCIL OF THE CITY OF NEWPORT BEACH AT A REGULAR MEETING THEREOF, HELD ON THE ____ DAY OF _____, 20____, BY ITS RESOLUTION No. _____

FILED THIS ____ DAY OF _____, 20____, AT THE HOUR OF ____ O' CLOCK ____ M. IN BOOK ____ OF MAPS OF ASSESSMENT AND COMMUNITY FACILITIES DISTRICTS AT PAGE ____, IN THE OFFICE OF THE COUNTY RECORDER IN THE COUNTY OF ORANGE, STATE OF CALIFORNIA.

COUNTY RECORDER OF COUNTY OF ORANGE

NOTE: FOR PARTICULARS OF THE LINES AND DIMENSIONS OF ASSESSOR'S PARCELS, REFERENCE IS MADE TO THE MAPS OF THE ORANGE COUNTY ASSESSOR, WHICH MAPS SHALL GOVERN FOR ALL DETAILS RELATING THERETO.



LEGEND

- POWER POLE TO BE REMOVED
- POWER POLE TO REMAIN IN PLACE
- POWER LINE TO BE REMOVED
- - - - POWER LINE TO REMAIN
- ASSESSMENT DISTRICT LINE BOUNDARY
- ASSESSED PARCEL
- - - - OFF-SITE PARCELS

PENCO ENGINEERING, INC.
 Civil Engineering
 Planning
 Surveying
 16842 Von Karman Ave, Ste 150
 Irvine, CA 92606
 (949) 753-8111