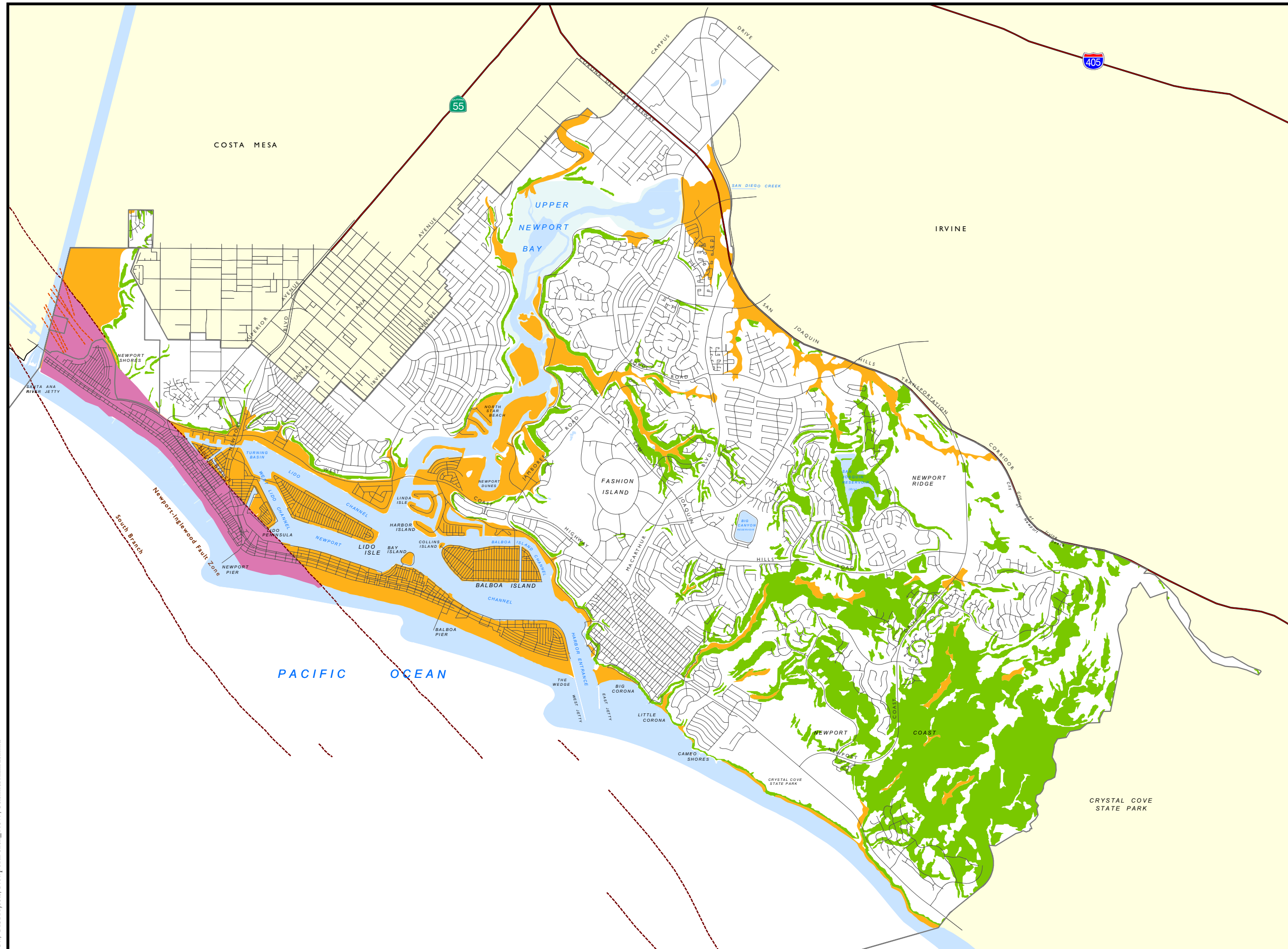


**Figure S2
SEISMIC
HAZARDS**



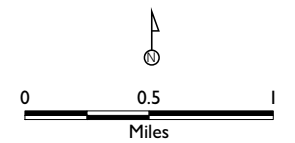
Legend

- City Boundary
- Areas with liquefaction potential
- Areas with landslide potential
- Fault Disclosure Zone for real-estate disclosure purposes

Fault Line

- Major fault traces as mapped by Morton, 1999. Presumed active, except where shown otherwise based on geological studies
- Southward projection of active fault traces based on a subsurface study on the west bank of the Santa Ana River

- Highway
- Local Road
- County



Source: City of Newport Beach and Earth Consultants, 2003
PROJECT NUMBER: 10579-01
Date: 06/07/06

