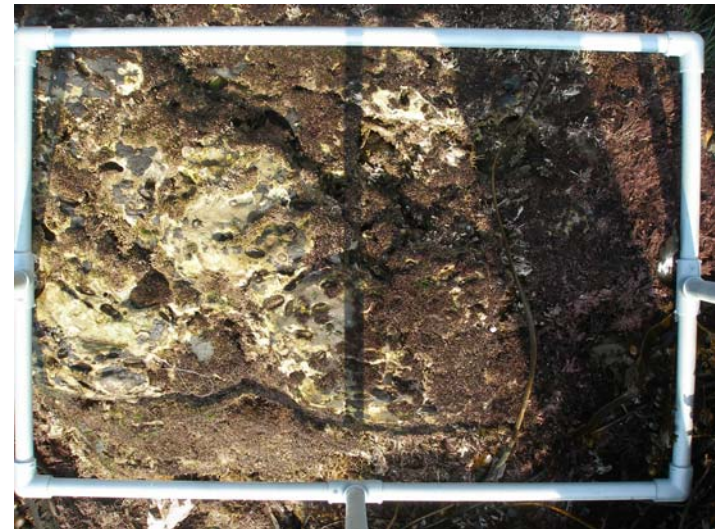


Morning Canyon Transect 1- Photo Plots

Photo	Plot	Notes
1	MCT1-1	top left 15°
2	MCT1-2	top right 20 °
3	MCT1-3	top left 30°



Morning Canyon Transect 1- Photo Plots

Photo	Plot	Notes
4	MCT1-P3	bottom right top bar =60°
5	MCT1-P2	top right 65 °



Morning Canyon Transect 2- Photo Plots

Photo	Plot	Notes
6	MCT2-1	top left 20°
7	MCT2-P1	top left 20 °
8	MCT2-2	top right 30°



Morning Canyon Transect 2- Photo Plots

Photo	Plot	Notes
9	MCT2-P2	top left 30°
10	MCT2-P3	top left 40 °
11	MCT2-3	top left 30°



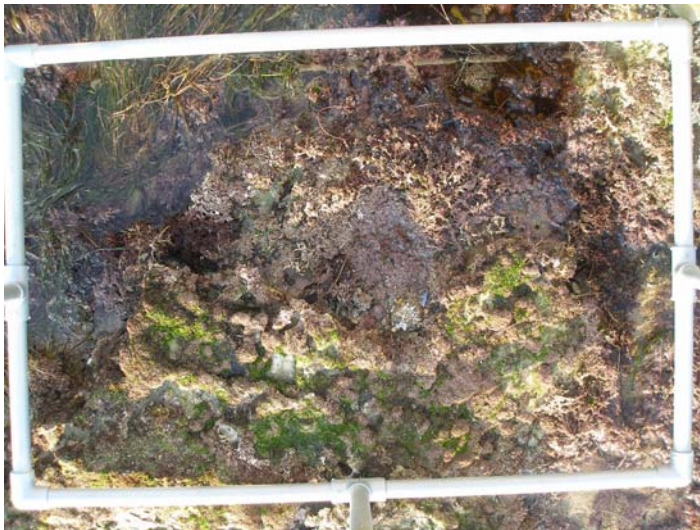
Morning Canyon Transect 3- Photo Plots

Photo	Plot	Notes
12	MCT3-1	top left 10°
13	MCT3-P1	top left 15 °
14	MCT3-2	bottom right 15°



Morning Canyon Transect 3- Photo Plots

Photo	Plot	Notes
15	MCT3-P3	top left 15°
16	MCT3-P2	top right 15 °
17	MCT3-3	top left 200°



Morning Canyon Transect 3- Photo Plots

Photo	Plot	Notes
18	MCT1-P1	top left 15 °



Heisler Park

Transect 3- Photo Plots

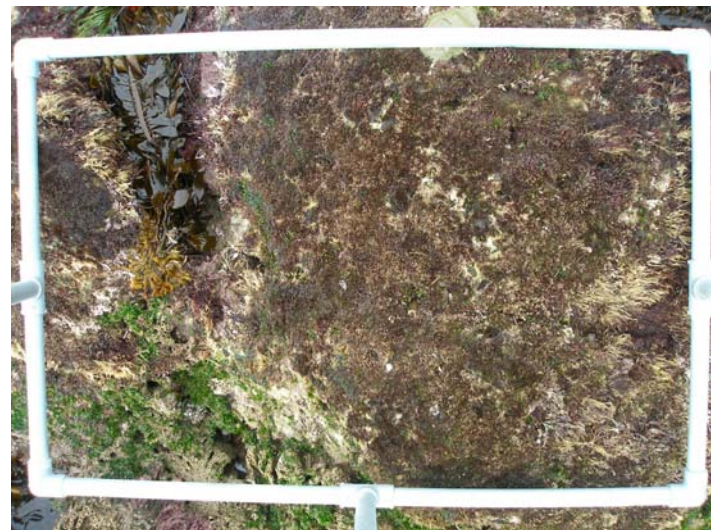
Photo	Plot	Notes
1	HPT3-1	top right 0°
2	HPT3-2	top right 0°
4	HPT3-3	bottom left 45°



Heisler Park

Transect 2- Photo Plots

Photo	Plot	Notes
5	HPT3-1	top left 10°
6	HPT3-2	top left 15 °
7	HPT3-3	top middle 0°



Heisler Park

Transect 1- Photo Plots

Photo	Plot	Notes
8	HPT1-1	top right 345°
9	HPT1-2	top right 315 °
10	HPT1-3	top left 325°



Buck Gully

Transect 1- Photo Plots

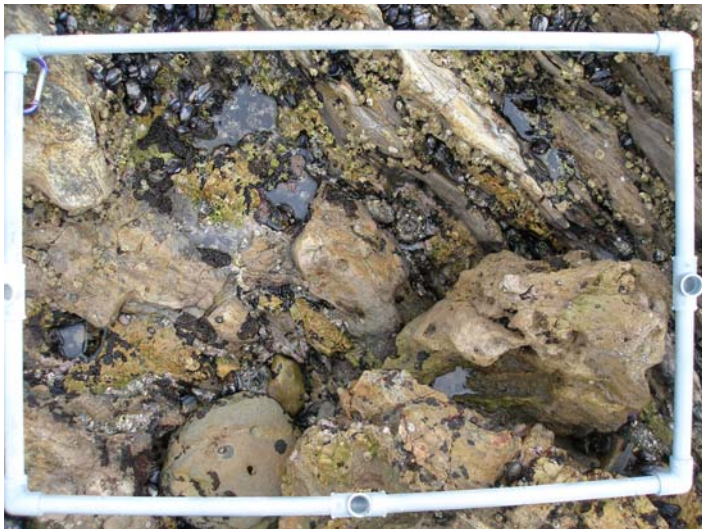
Photo	Plot	Notes
1	BGT1-P1	top right
2	BGT1-1	top left
3	BGT1-P2	top left 37°



Buck Gully

Transect 2- Photo Plots

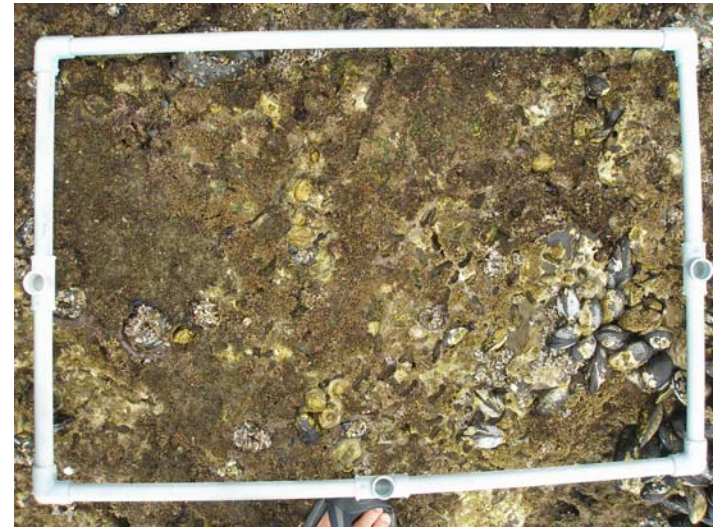
Photo	Plot	Notes
4	BGT2-P1	top left 310°
5	BGT2-1	top left 350°
6	BGT2-2	top left 340°



Buck Gully

Transect 2- Photo Plots

Photo	Plot	Notes
7	BGT2-P2	bottom left 355°
8	BGT2-3	bottom left 355°
9	BGT2-P3	top right 335°



Buck Gully

Transect 3- Photo Plots

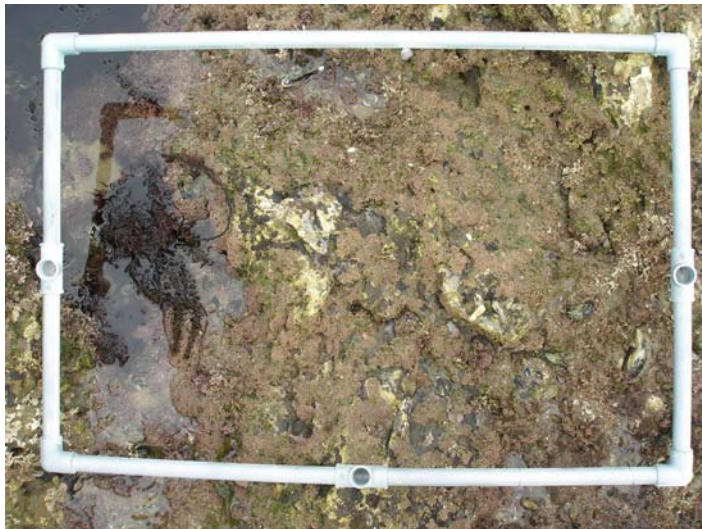
Photo	Plot	Notes
10	BGT3-P1	top left 320°
11	BGT3-1	top left 325°
12	BGT3-2	bottom left 320°



Buck Gully

Transect 3- Photo Plots

Photo	Plot	Notes
13	BGT3-P2	bottom left 325°
14	BGT3-P3	top right 345°
15	BGT3-3	top right 330°



Buck Gully

Transect 1- Photo Plots

Photo	Plot	Notes
16	BGT1-2	top right 10°
17	BGT1-3	bottom left 350°
18	BGT1-P3	top left 10°

