



GENERAL PLAN UPDATE KICK OFF



CITY COUNCIL STUDY SESSION

JANUARY 8, 2019

COMMUNITY DEVELOPMENT DEPARTMENT

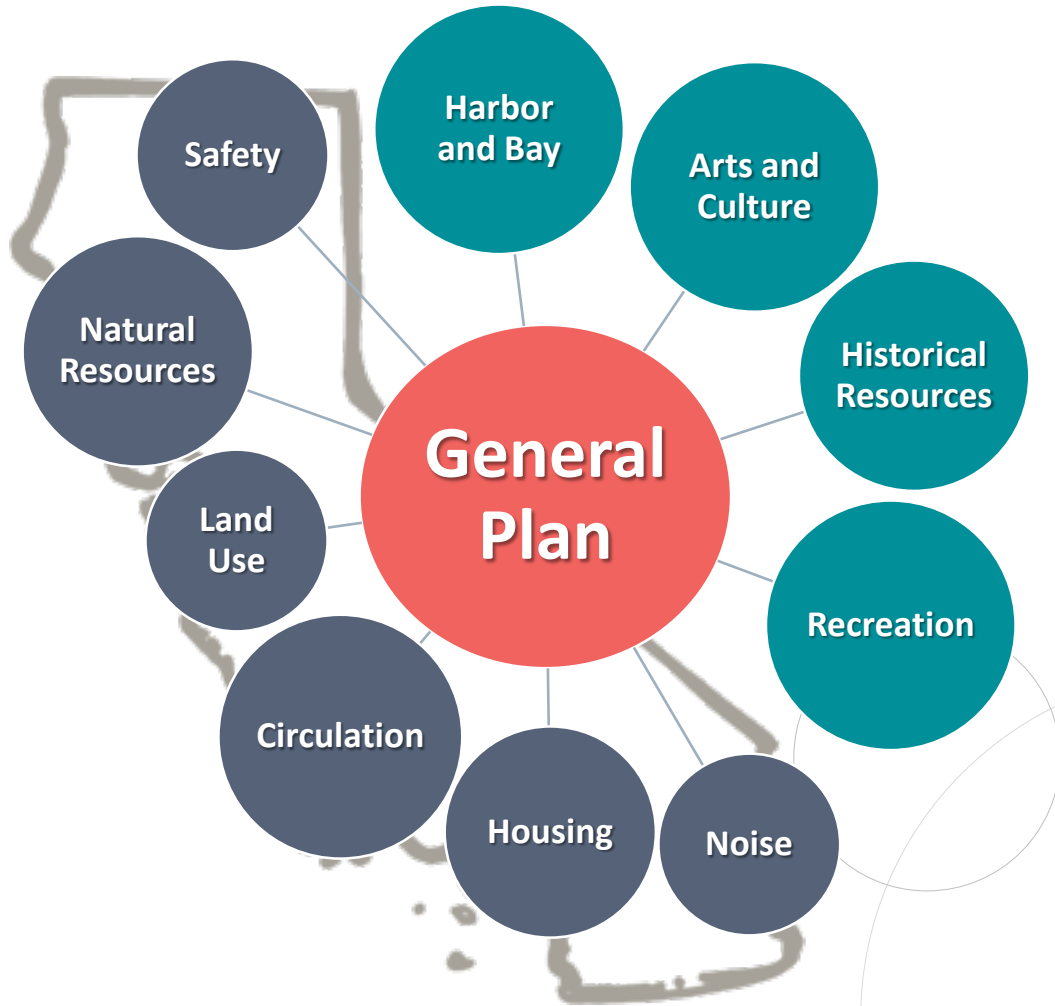
NEWPORT BEACH

GENERAL PLAN UPDATE

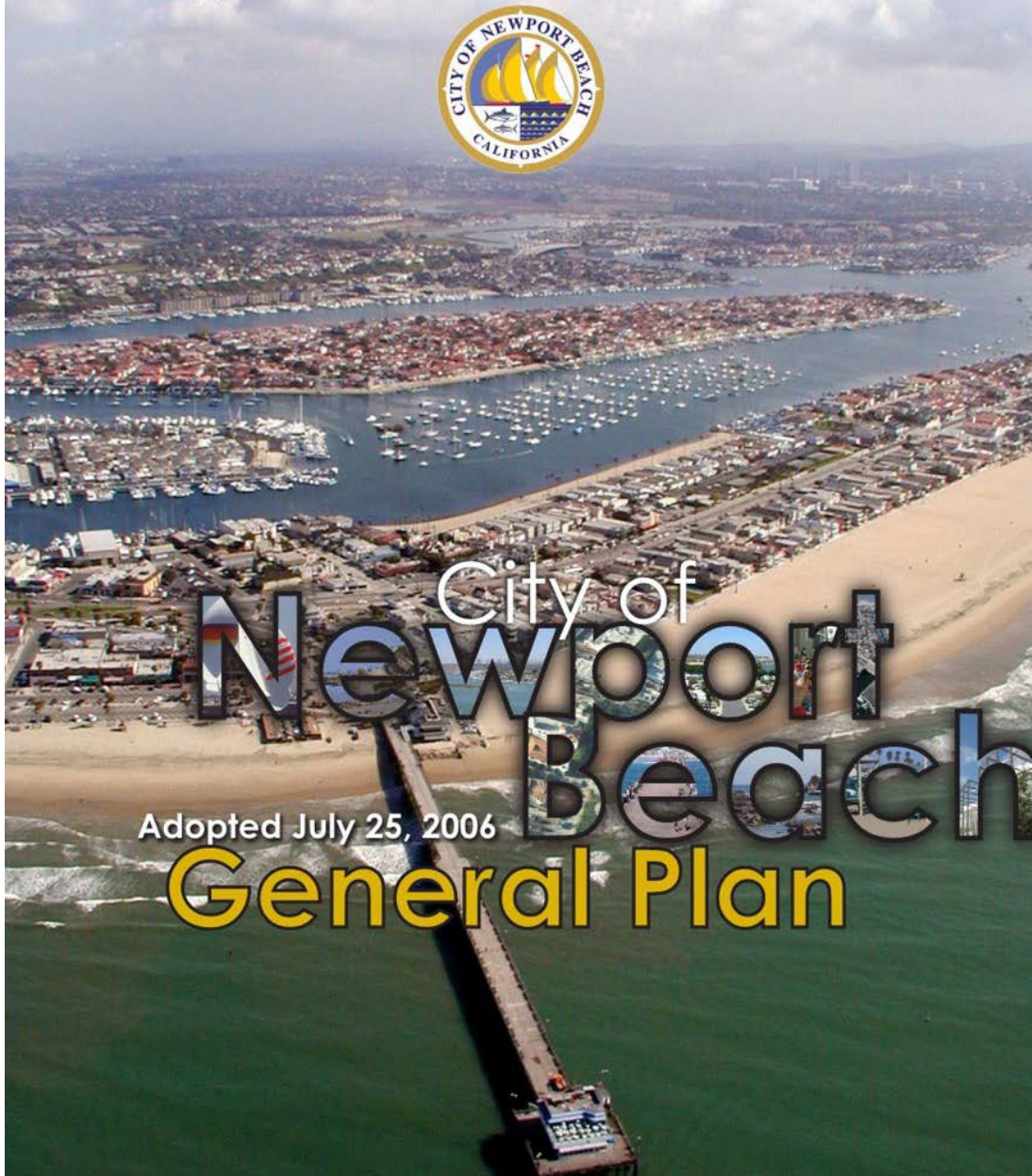




WHAT IS THE GENERAL PLAN?



- It establishes the community's vision of its future
- It provides a long-range blueprint for development
- It contains 10 elements (6 State required)

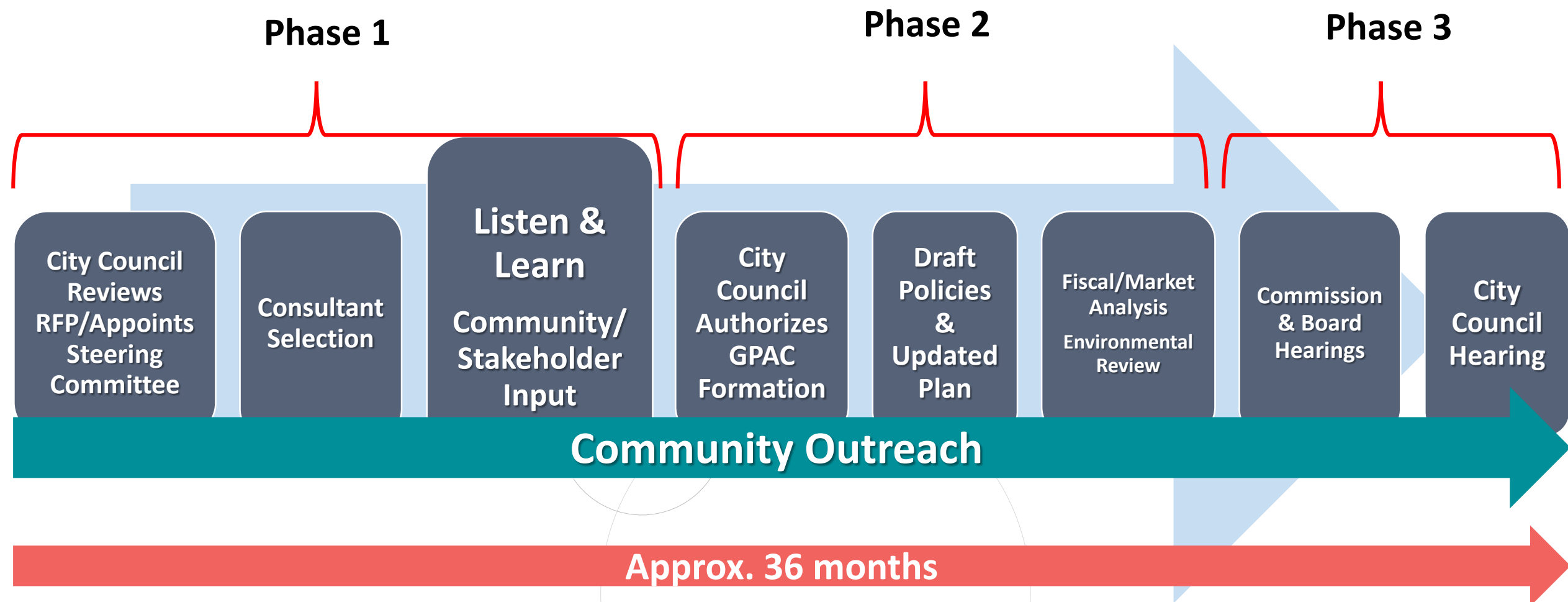


WHY SHOULD WE UPDATE IT?

- Last comprehensive update was 2006
- Changes in State planning law
- Community Vision may have changed



WHAT IS THE PROCESS?





WHAT ARE THE DIFFERENT PHASES?

Phase 1 – “Listen and Learn” [2019]

- Listen to the community and understand the community’s vision for the City.

Phase 2 – “Document Development” [2020]

- Writing the actual General Plan document, forming and working with a General Plan Advisory Committee. EIR development, and fiscal analysis.

Phase 3 – “Public Hearings” [2021]

- Working with the commissions, boards, and City Council for final adoption



1ST STEP IN PHASE 1 FORMING A STEERING COMMITTEE

- Five Members of the Public
- Committee sunsets at end of Phase 1

Qualifications:

- Understanding of Land Use and Planning
- Practical Experience in Planning or Design
- Able to Make the Time Commitment

Steering Committee

RESPONSIBILITIES

- Review draft RFP for consultant
- Review RFP proposals
- Recommend consultant to City Council
- Ensure public outreach and stake holder input
- Guides staff in the “Listen and Learn” process



These are Public Meetings that are Open and Transparent

HOW WILL IT WORK WITH THE STEERING COMMITTEE?

- Involves the community through public meetings
- Provides guidance to staff and reports to City Council





2ND STEP IN PHASE 1 REQUEST FOR PROPOSALS (RFP) FOR CONSULTANT

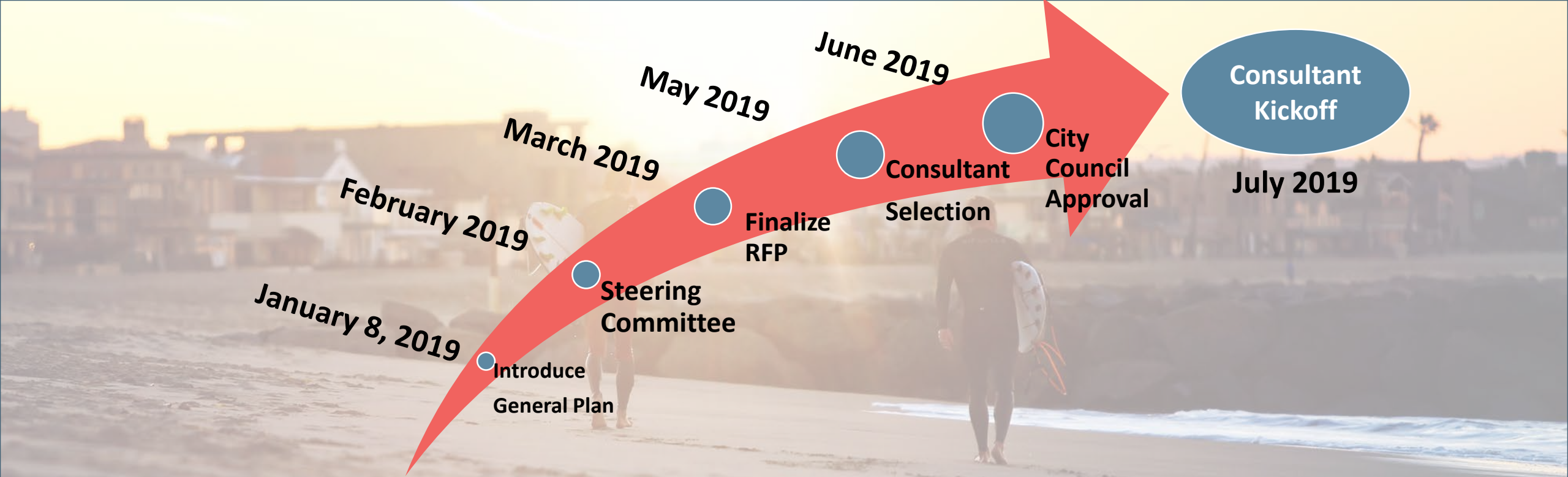
- Sets City's expectation consultant
- Scope of work is important
- Draft RFP attached to City Council report
- Community meeting in February'19





3RD STEP IN PHASE 1 CONSULTANT SELECTION

- ✓ Activates outreach efforts
- ✓ Facilitates community visioning and workshops
- ✓ Prepares draft updates to goals & policies as directed
- ✓ Conducts necessary analyses and studies
- ✓ Prepares Environmental Impact Report (EIR)



ANTICIPATED NEAR-TERM TIMELINE





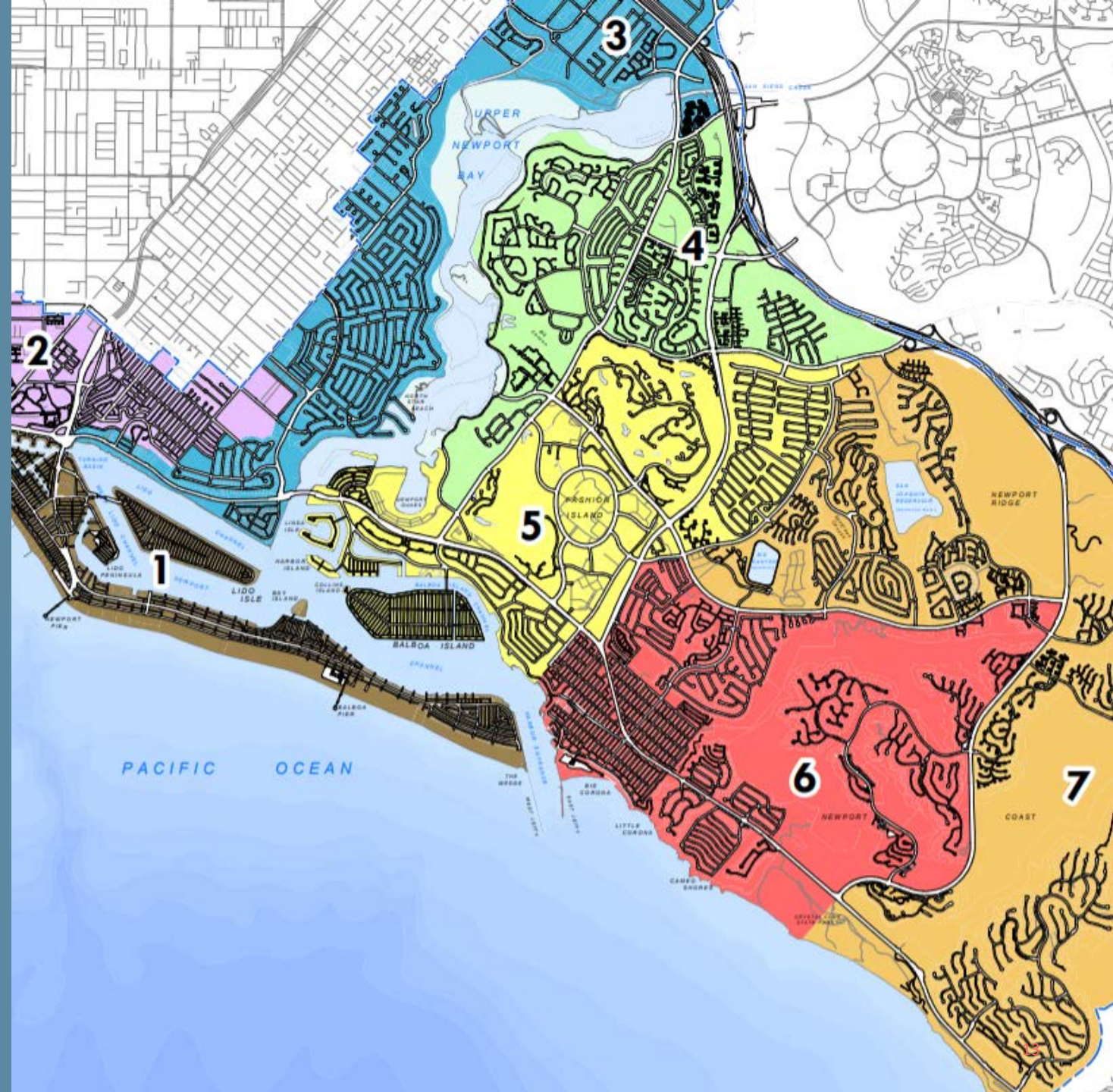
“LISTEN AND LEARN”

CIVIC ENGAGEMENT THROUGH OUTREACH

- ✓ Residents and Property Owners
 - ✓ Neighborhood HOAs
- ✓ Businesses
- ✓ Community Stakeholders
 - ✓ Community Groups

LISTEN AND LEARN OUTREACH

- Consultant will shape and facilitate outreach program which includes:
 - Several Meetings in each council district
 - Virtual town hall meetings
 - Public Surveys
 - Stake holder meetings





“LISTEN AND LEARN” POTENTIAL TOPICS

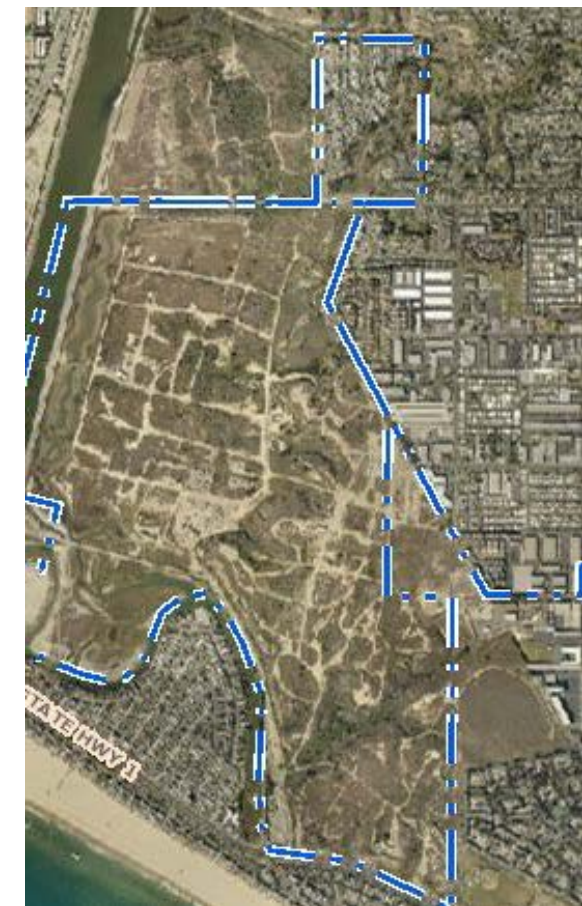
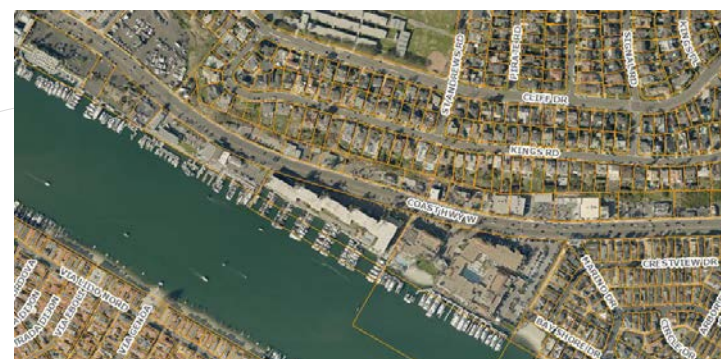
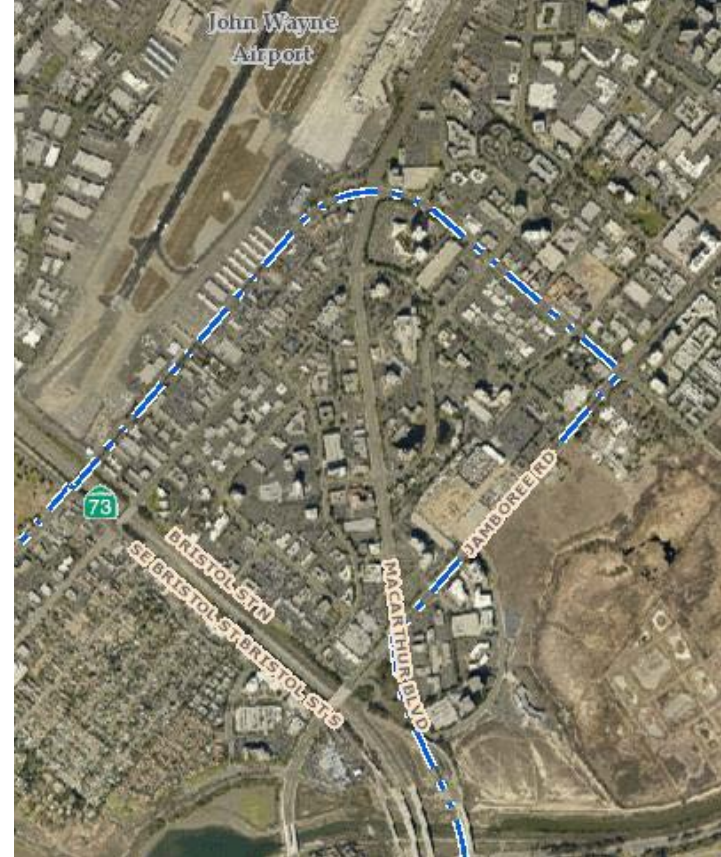
- **Land Use/Housing**
- **Traffic/Mobility**
- **Sea level rise/Climate change**
- **Sustainability**
- **Environmental justice**
- **Others?**





“LISTEN AND LEARN” POTENTIAL STUDY AREAS

- Airport Area
- Banning Ranch
- Mariner’s Mile
- Newport Center
- Harbor and Bay
- Others?



PHASE 2 GENERAL PLAN ADVISORY COMMITTEE (GPAC)

- Formed after Listen & Learn
- About 25 community members
- Shapes goals and policies with Listen & Learn results as guide
- Provides community forum for ongoing outreach and discussion





ANTICIPATED COST

- \$2.5 million over the course of the update.
- Approximately \$1.5 million will be requested through FY19-20 Budget.



THE PROCESS

Phase 1

Phase 2

Phase 3

City Council
Reviews
RFP/Appoints
Steering
Committee

Consultant
Selection

Listen &
Learn
Community/
Stakeholder
Input

City
Council
Authorizes
GPAC
Formation

Draft
Policies
&
Updated
Plan

Fiscal/Market
Analysis
Environmental
Review

Commission
& Board
Hearings

City
Council
Hearing

Community Outreach

Approx. 36 months



CITY COUNCIL DIRECTION

- Agree to initiate the General Plan update?
- Agree to form a five member Steering Committee?
- Steering Committee member selection process?
- Community meeting on draft RFP will be scheduled for February?

CONTACT US

Seimone Jurjis, P.E., C.B.O.

Community Development Director

sjurjis@newportbeachca.gov

949-644-3200

James Campbell

Deputy Community Development Director

jcampbell@newportbeachca.gov

949-644-3210

Benjamin Zdeba, AICP

Associate Planner

bzdeba@newportbeachca.gov

949-644-3253

NEWPORT BEACH

GENERAL PLAN UPDATE



GPUUpdate@newportbeachca.gov

www.newportbeachca.gov/GPUUpdate



QUESTIONS & COMMENTS



GPUUpdate@newportbeachca.gov



www.newportbeachca.gov/gpupdate

