

# City Council Redistricting Committee

June 30, 2011



# Charter Section 1005

- **Section 1005 Districts.**

The City is hereby divided into seven districts, the names and respective boundaries of which shall be as established by ordinance. No ordinance changing and redefining the boundaries of any district shall be enacted within six months prior to any regular Councilmanic election.

Following the national census and each tenth year thereafter the City Council shall appoint a committee to study and report to the City Council on the advisability of redistricting the City. Upon receipt of any such committee report, and at any other time deemed necessary or desirable in order that the district boundaries be fair and logical, the City Council may by ordinance change and redefine the boundaries of any or all of the seven districts herein established. The boundaries so defined shall be established in such manner that the district shall, as nearly as practicable, constitute natural areas of contiguous and compact territory and provide fair representation on the City Council. Notwithstanding the provisions of Section 401, no redistricting shall disqualify any Councilmember from serving as Councilmember from the district from which he or she was nominated or appointed for the remainder of his or her term, if elected, or until the next general municipal election, if appointed. Any territory hereafter annexed to or consolidated with the City shall, at the time of such annexation or consolidation, be added by ordinance of the City Council to an adjacent district or districts.



# California Elections Code Section 21620

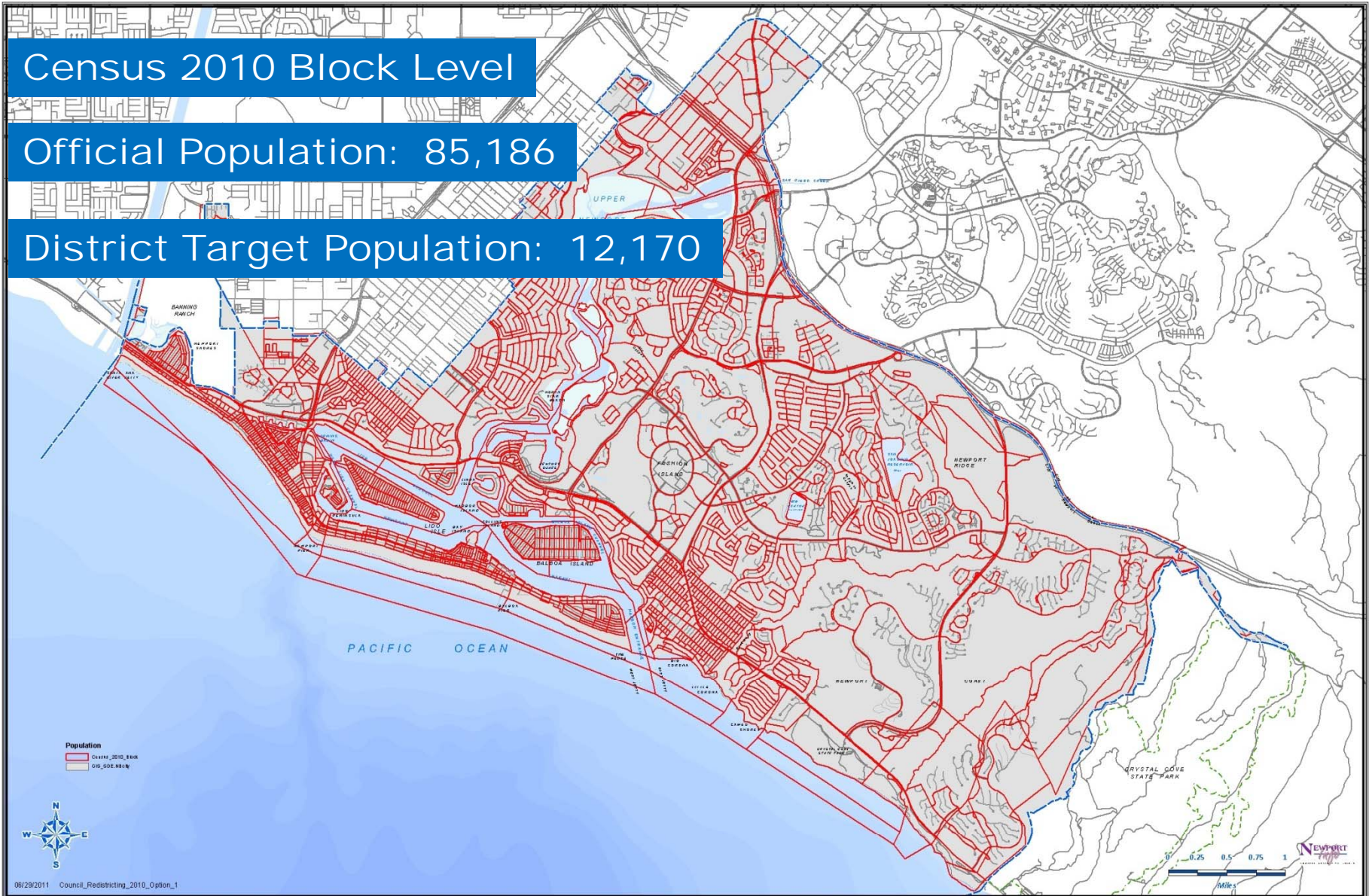
If the members of the governing body of a chartered city are nominated or elected “by districts” or “from districts,” as defined in Section 34871 of the Government Code, upon the initial establishment thereof, the districts shall be as nearly equal in population as may be according to the latest federal decennial census or, if the city's charter so provides, according to the federal mid-decade census or the official census of the city, as provided for pursuant to Chapter 17 (commencing with Section 40200) of Part 2 of Division 3 of Title 4 of the Government Code, as the case may be. After the initial establishment of the districts, the districts shall continue to be as nearly equal in population as may be according to the latest federal decennial census or, if authorized by the charter of the city, according to the federal mid-decade census. The districts shall comply with the applicable provisions of the federal Voting Rights Act of 1965, Section 1973 of Title 42 of the United States Code, as amended. In establishing the boundaries of the districts, the council may give consideration to the following factors: (1) topography, (2) geography, (3) cohesiveness, contiguity, integrity, and compactness of territory, and (4) community of interest of the districts.



Census 2010 Block Level

Official Population: 85,186

District Target Population: 12,170





# City Council Districts

## City of Newport Beach

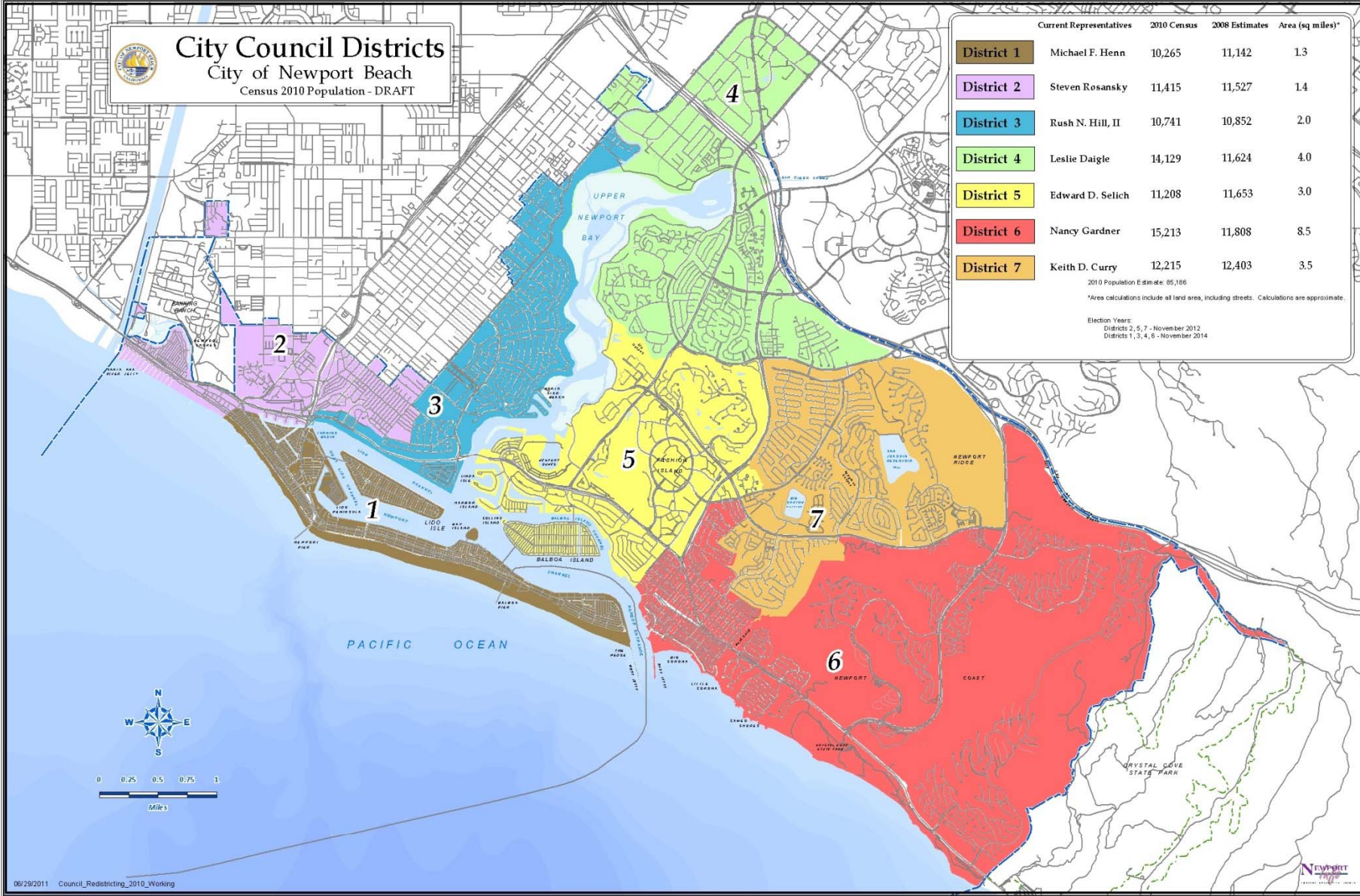
Census 2010 Population - DRAFT

District	Current Representatives	2010 Census	2008 Estimates	Area (sq miles)*
District 1	Michael F. Henn	10,265	11,142	1.3
District 2	Steven Rosansky	11,415	11,527	1.4
District 3	Rush N. Hill, II	10,741	10,852	2.0
District 4	Leslie Daigle	14,129	11,624	4.0
District 5	Edward D. Selich	11,208	11,653	3.0
District 6	Nancy Gardner	15,213	11,808	8.5
District 7	Keith D. Curry	12,215	12,403	3.5

2010 Population Estimate: 85,186

\*Area calculations include all land area, including streets. Calculations are approximate.

Election Years:  
 Districts 2, 5, 7 - November 2012  
 Districts 1, 3, 4, 6 - November 2014

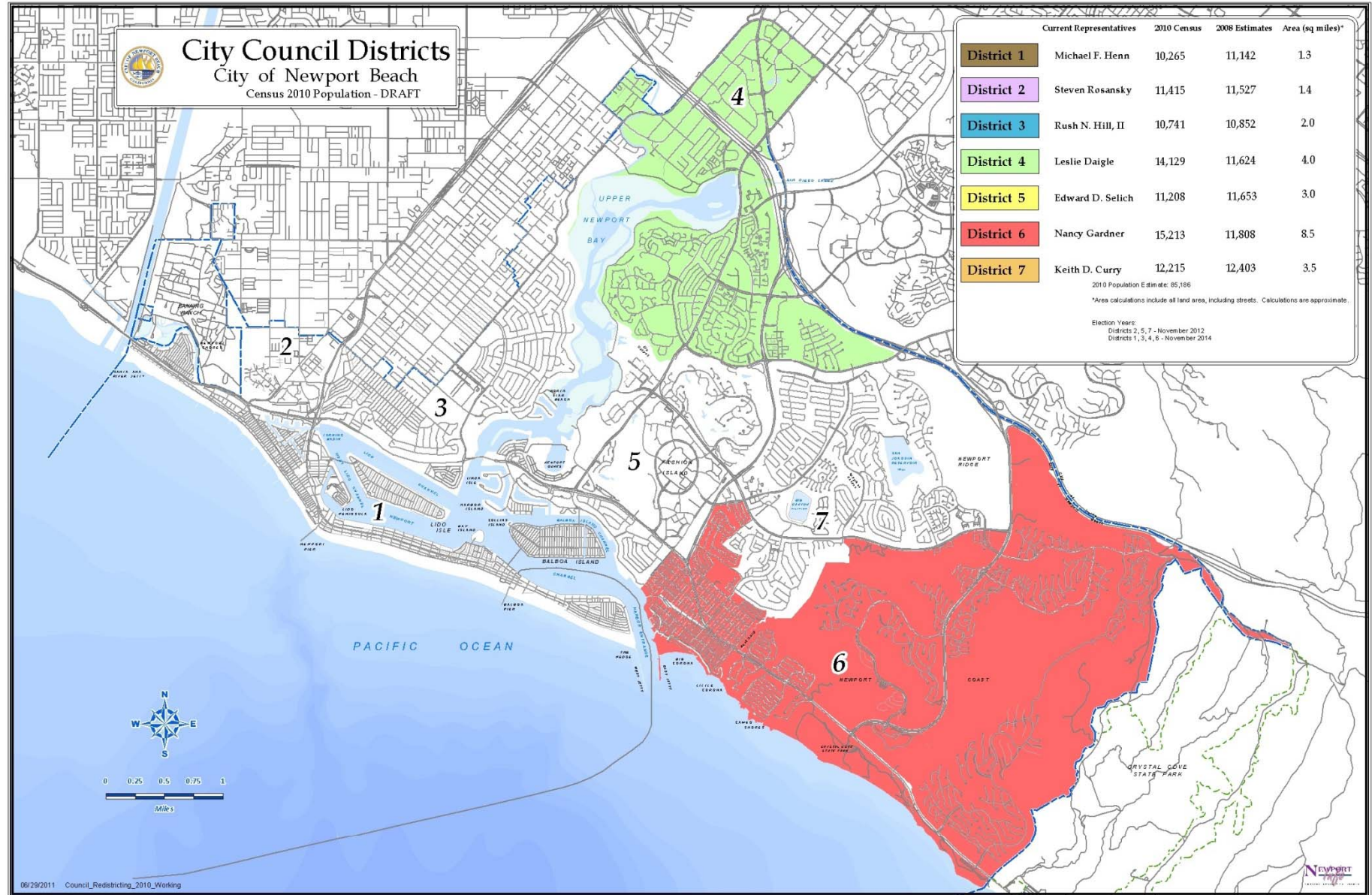




# City Council Districts

## City of Newport Beach

Census 2010 Population - DRAFT



District	Current Representatives	2010 Census	2008 Estimates	Area (sq miles)*
District 1	Michael F. Henn	10,265	11,142	1.3
District 2	Steven Rosansky	11,415	11,527	1.4
District 3	Rush N. Hill, II	10,741	10,852	2.0
District 4	Leslie Daigle	14,129	11,624	4.0
District 5	Edward D. Selich	11,208	11,653	3.0
District 6	Nancy Gardner	15,213	11,808	8.5
District 7	Keith D. Curry	12,215	12,403	3.5

2010 Population Estimate: 85,186

\*Area calculations include all land area, including streets. Calculations are approximate.

Election Years:  
 Districts 2, 5, 7 - November 2012  
 Districts 1, 3, 4, 6 - November 2014



**Current Representatives      2010 Census      20**

<b>District 1</b>	Michael F. Henn	10,265
<b>District 2</b>	Steven Rosansky	11,415
<b>District 3</b>	Rush N. Hill, II	10,741
<b>District 4</b>	Leslie Daigle	14,129
<b>District 5</b>	Edward D. Selich	11,208
<b>District 6</b>	Nancy Gardner	15,213
<b>District 7</b>	Keith D. Curry	12,215

2010 Population Estimate: 85,186

\*Area calculations include all land area, inclu

Election Years:

Districts 2, 5, 7 - November 2012

Districts 1, 3, 4, 6 - November 2014



# Community Associations

## City of Newport Beach

- City Boundary
- K-Big Canyon
- P-Corona del Mar
- Q-Newport Ridge North Mtn.
- S-Newport Coast
- R-Newport Ridge
- X-Pacific Ridge CA
- T-Pelican Point
- U-Crystal Core
- V-Zani

- West Newport Beach Associations**
- A1 Fair West Newport Residents Association
  - A2 Newport Shores Community Association
  - A3 Lido Estate Community Association
  - A4 West Newport Beach Association
  - A5 Newport Island Community Association
  - A6 Newport Marina Village Owners Association
  - A7 Balboa Cove Community Association
  - A8 Newport Crest Homeowners Association
  - A9 Seawind Newport Community Association
  - A10 Newport Inshore Homeowners Association
  - A11 Park Lido Homeowners Association
  - A12 Versaille Homeowners Association
  - A13 Villa Balboa Community Association
  - A14 Newport Condos Association

- Balboa Peninsula**
- B1 Newport Pier Association
  - B2 Central Newport Beach Community Association
  - B3 Bay Island Club, Incorporated
  - B4 Balboa Village Business Improvement District
  - B5 Balboa Condominium Association
  - B6 Balboa Peninsula Point Association

- Newport Harbor**
- C1 Lido Marina Village
  - C2 Cannery Village Mobile Home Park Association
  - C3 Lido Peninsula Company
  - C4 Lido Peninsula Resort
  - C5 Lido Isle Community Association
  - C6 Newport Tower Homeowners Association
  - C7 Matinee Mile Association
  - C8 Bayshore Community Association
  - C9 Linda Isle Community Association
  - C10 Harbor Island Community Association
  - C11 Promontory Bay Community Association
  - C12 Beacon Bay Community Association
  - C13 Balboa Island Homeowners Association
  - C14 Collier Island Community Association
  - C15 Balboa Island Improvement Association
  - C16 Balboa Island Business Association
  - C17 Lido Balboa Island Property Owners Association

- Dover - West/East - Newport Heights**
- D1 Newport Heights Improvement Association
  - D2 Sand Acorn Village
  - D3 Cliff Haven Community Association
  - D4 Westoff Village
  - D5 Dover Village Community Association
  - D6 Castaway Homeowners Association
  - D7 Dover Shores Community Association
  - D8 Mariners Community Association
  - D9 Sea View Community Association
  - D10 Newport Glen Court Estates Homeowners Association

- Upper Bay**
- F1 Four Four's Association
  - F2 Newport Upper Bay Estates Association
  - F3 Back Bay Community Association
  - F4 Bayview Terrace Homeowners Association
  - F5 Bayview Court Homeowners Association

- East/East**
- G1 North Bluff Bayview Community Association
  - G2 North Bluff Park Community Association
  - G3 North Bluff Vista Community Association
  - G4 Eastbluff Homeowners Community Association
  - G5 Plaza Homeowners Community Association
  - G6 Bluffs Homeowners Association
  - G7 Eastbluff Apartment Owners Association
  - G8 Villa Oranada Community Association

- North Ford**
- H1 Newport Homeowners Association
  - H2 Newport North Townhomes Association
- Redcort - Ford Road**
- I1 Bayridge Park Homeowners Association
  - I2 Redcort Terrace Homeowners Association
  - I3 Redcort Manor Community Association
  - I4 Redcort Park Homeowners Association
  - I5 Redcort Ford Road Community Association
  - I6 Redcort Hill Homeowners Association

- Bonita Canyon**
- J1 Bonita Canyon Maintenance Association
  - J2 Newport Bluffs Apartment Community Association
- Big Canyon Community Association (Master Association)**
- K1 Sea Island Community Association
  - K2 Canyon Lakes Community Association
  - K3 Canyon Point Community Association
  - K4 Big Canyon Townhomes Association
  - K5 Big Canyon Villas - not affiliated with Master Association
  - K6 Canyon Hill Community Association
  - K7 Canyon Crest Community Association
  - K8 Canyon View Community Association
  - K9 Canyon Mesa Community Association
  - K10 Canyon Terrace Community Association
  - K11 Canyon Island Community Association

- Newport Center**
- L1 Harbor Cove Community Association
  - L2 Bayside Village Homeowners Association
  - L3 Island Lagoon Homeowners Association
  - L4 Villa Point Condominium Association
  - L5 OceanBly Community Association
  - L6 Newport Center Association & Fashion Island Merchants
  - L7 Medical Plaza at Newport Center

- Harbor View - Harbor Ridge**
- M1 Harbor View Community Association
  - M2 Newport Hills Community Association
  - M3 Newport Hills Estates Association
  - M4 Harbor View Vista Community Association
  - M5 Harbor Ridge Estate Maintenance Association
  - M6 Harbor Hill Homeowners Association
  - M7 Broadmoor Sea View Homeowners Association
  - M8 Harbor Ridge Master Association
  - M9 Harbor Ridge Crest Homeowners Association
  - M10 Harbor Woods Homeowners Association

- Corona del Mar Residents Associations (Master Association)**
- O1 Harbor Point Homeowners Association
  - O2 Broadmoor Hills Community Association
  - O3 Harbor View Broadmoor Association
  - O4 Jasmine Creek Community Association
  - O5 Harbor View Hills South Homeowners Association
  - O6 Spinnaker Ridge Community Association
  - O7 Canyon Crest Estates Homeowners Association
  - O8 Spinnaker Hill Community Association
  - O9 Mai Kai Community Association
  - O10 Irvine Terrace Community Association
  - O11 Corona del Mar Gardeners Association
  - O12 Pointe del Mar Association
  - O13 Newport Hills Community Association
  - O14 Jasmine Park Homeowners Association
  - O15 Terrace of Corona del Mar Homeowners Association
  - O16 Channel Reef Community Association
  - O17 Breakers Drive Association
  - O18 Shoreline Property Owners Association
  - O19 Corvids Community Association
  - O20 Corona Highlands Property Owners Association
  - O21 Cameas Community Association
  - O22 Salthouse
  - O23 China Cove Condominium Association

- Newport Ridge North Maintenance (Master Association)**
- Q1 Newport Ridge North Maintenance Association
  - Q2 Business Adjustments (Not a part of Master Association)
- Newport Ridge (Master Association)**
- R1 Monte Vista Community Association
  - R2 St. Michael Community Association
  - R3 The Estates Community Association
  - R4 Santerra Community Association
  - R5 The Pacific Community Association
  - R6 The Summit Community Association
  - R7 Newport Ridge Apartments Community Association
  - R8 Newport Ridge Villas Community Association
  - R9 St. Laurent Community Association

- Newport Coast (Master Association)**
- S1 Terrace Community Association
  - S2 Comstock Community Association
  - S3 Los Francos Maintenance Association
  - S4 Ocean Heights Community Association
  - S5 Alkaza Community Association
  - S6 Terrace Community Association
  - S7 Santa Lucia Community Association
  - S8 Pelican Ridge Community Association
  - S9 Pelican Ridge Estates Community Association
  - S10 Pelican Ridge Maintenance Corporation
  - S11 Pelican Crest Community Association
  - S12 Pelican Crest Community Association
  - S13 Pelican Hill Community Association
  - S14 Pelican Heights Homeowners Association
  - S15 Varona

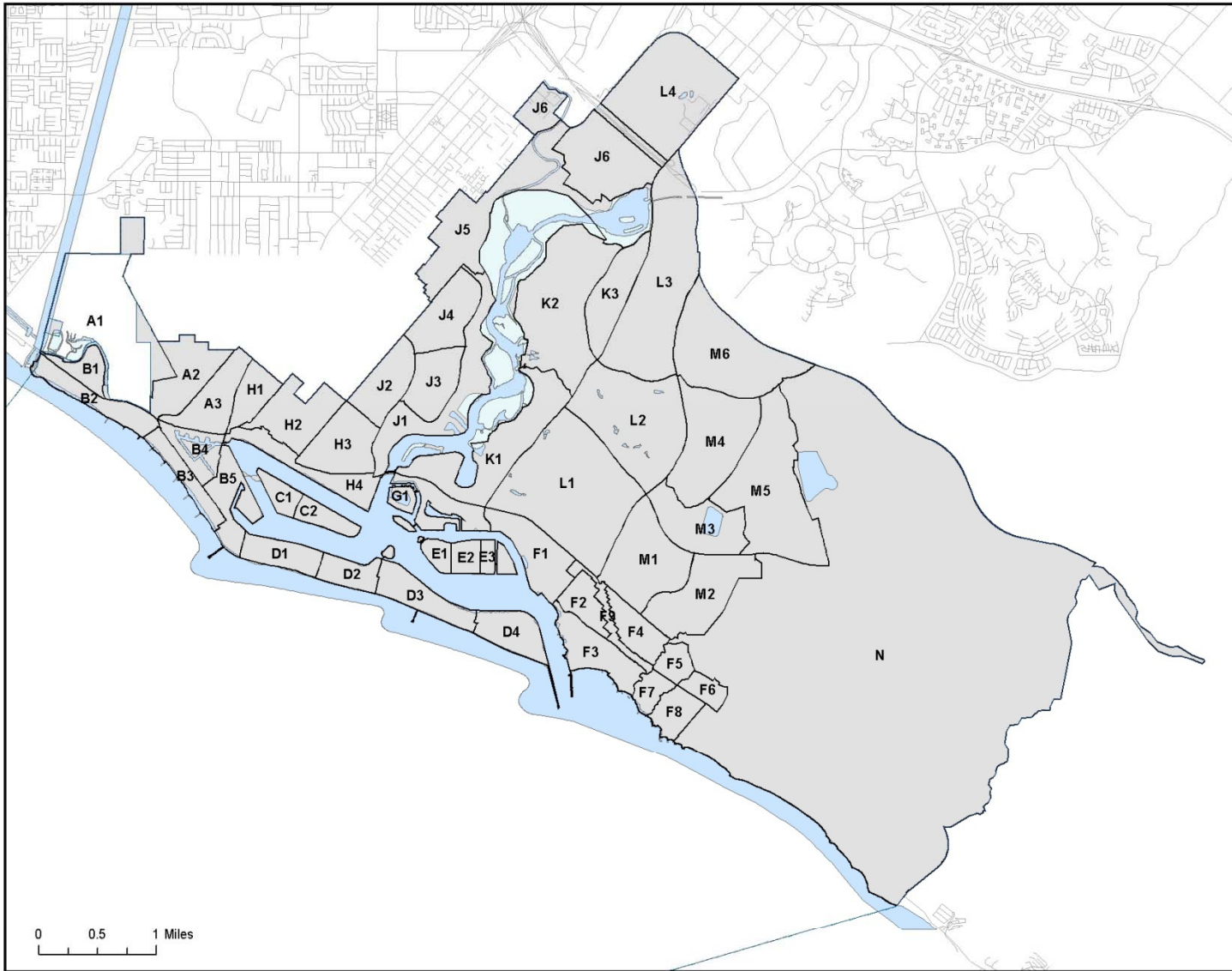
- Pelican Point (Master Association)**
- T1 Pelican Point Community Association

- Crystal Core (Master Association)**
- U1 Crystal Cove Community Association

- Zani (Master Association)**
- V1 Zani Community Association
- W**
- W1 Marston Newport Coast View
  - W2 Pelican Hill Resort

- Pacific Ridge Maintenance (Master Association)**
- X1 Pacific Ridge Maintenance





CITY of NEWPORT BEACH  
 GENERAL PLAN  
 Figure LU3  
 STATISTICAL AREA  
 MAP

- City of Newport Beach Boundary
- Statistical Area Boundary







**City Council Districts**  
 City of Newport Beach  
 Census 2010 Population - DRAFT

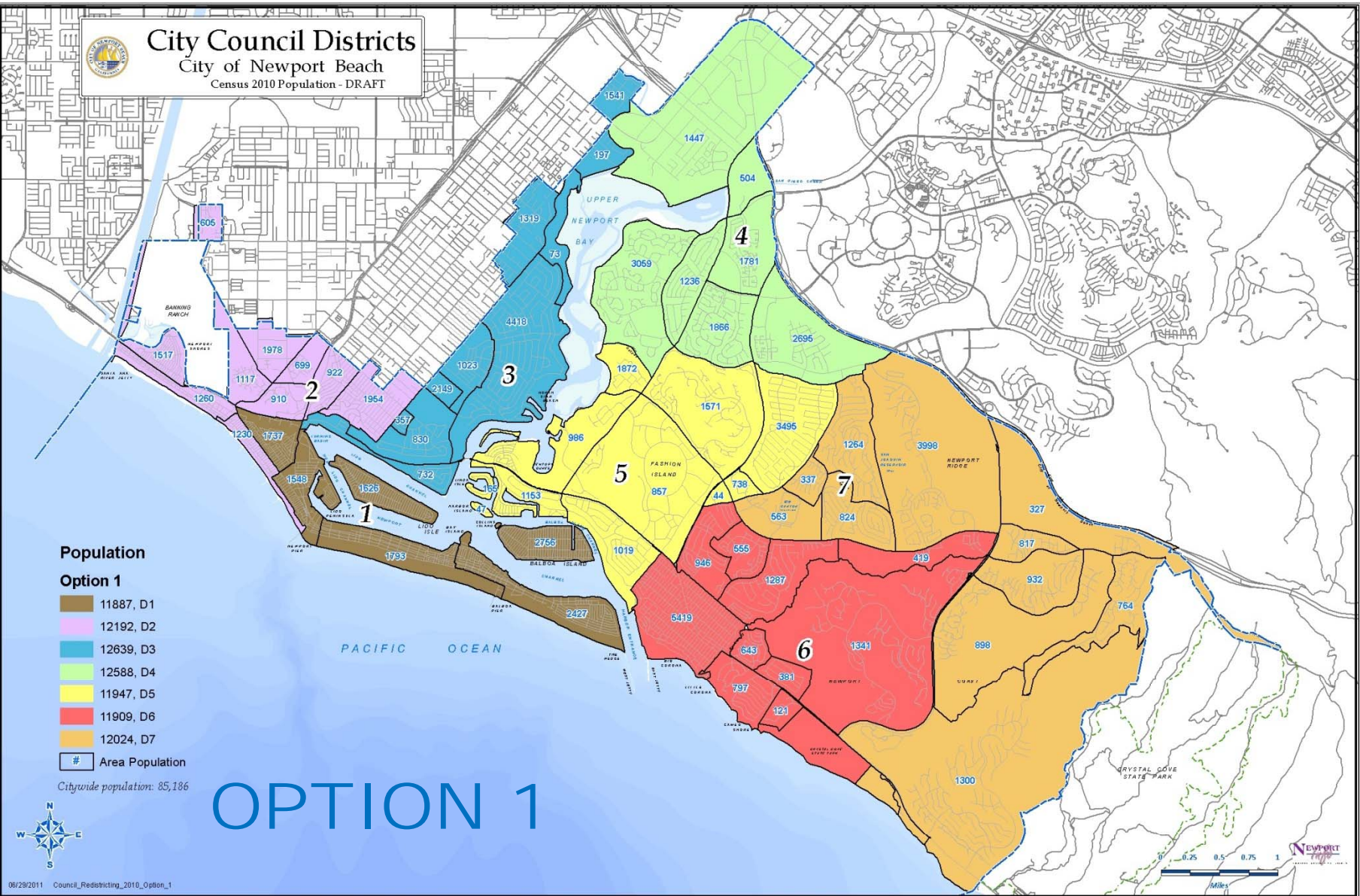
**Population**

**Option 1**

11887, D1
12192, D2
12639, D3
12588, D4
11947, D5
11909, D6
12024, D7
# Area Population

Citywide population: 85,186

# OPTION 1



**City Council Districts**  
 City of Newport Beach  
 Census 2010 Population - DRAFT

**Population**

Color	Population Range	District
Brown	13138, D1	D1
Pink	12671, D2	D2
Blue	10104, D3	D3
Light Green	12509, D4	D4
Yellow	12687, D5	D5
Red	12596, D6	D6
Orange	11481, D7	D7

# Area Population

Citywide population: 85,186

# OPTION 2

