

City of Newport Beach  
Parks, Beaches & Recreation Commission  
Tuesday, April 7, 2009- 7pm– City Council Chambers

**AGENDA**

**ORDER AND ROLL CALL**

**CORONA DEL MAR STATE BEACH PRESENTATION**

**DIRECTOR'S COMMENTS**

- Director Detweiler
- Director Harmon
- City Council Actions

**PUBLIC COMMENTS**

Members of the public are invited to comment on non-agenda items of public interest. Speakers are limited to three minutes.

**NOTICE TO THE PUBLIC**

All matters listed under Consent Calendar 1-3 are considered by the Commission to be routine and will all be enacted by one motion in the form listed below. The Commission Members have received detailed staff reports on each of the items recommending approval and there will be no separate discussion of these items prior to the time the Commission votes on the motion unless members of the Commission, staff, or the public request a specific item to be discussed and/or removed from the Consent Calendar for separate action. The City provides a yellow sign-in card for those wishing to address the Commission to assist in the preparation of the minutes. If you do fill out the card please place it in the box at the table.

**CONSENT CALENDAR**

1. Minutes of the March 3, 2009 regular meeting.

**Recommendation:** *Waive reading of subject minutes, approve and order filed.*

2. Park & Operations Division Activity Report.

**Recommendation:** *Receive/file monthly Activity Report for activities and upcoming projects.*

3. Recreation & Senior Services Activity Report.

**Recommendation:** *Receive/file monthly Activity Report for activities and upcoming projects.*

**OLD / NEW BUSINESS**

4. Castaways Park Flagpole.

**Recommendation:** *Review staff report and direct staff on securing funds for the purchase & installation of a flag pole to be located adjacent to the 1/1 Marine Memorial at Castaways Park.*

5. Reforestation Request.

**Recommendation:** *Consider reforestation request of Ron Centra at 507 Rockford Place*

6. Reforestation Request.

**Recommendation:** *Consider reforestation request of Broadmoor Hills Community Association at 2706 Lighthouse Lane by Gail Finnell*

7. Appeal for Tree Removal denied at 501½ Narcissus Avenue.

**Recommendation:** *Deny the appeal for the removal of one City Melaleuca quinquenervia parkway street tree at 501½ Narcissus Avenue by Barbara Edwards.*

**COMMITTEE REPORTS**

- *Park Development* – Brown, Lugar, Marston
- *Recreation/Senior Activities* – Hamilton, Brown, Lugar
- *Budget* – Garrett, Brown, Lugar
- *Ad Hoc*
  - Community Service Award – Garrett, Ruzicka
  - Youth Sports Liaison – Ruzicka
  - China Cove Volleyball Court– Brown, Lugar
- Other* -- Marina Park – Garrett

**FUTURE AGENDA ITEMS** - Matters which Commissioners may wish to place on a future agenda or raise for discussion.  
Vandalism /Damage Report

**ADJOURNED**

# CITY OF NEWPORT BEACH

Parks, Beaches & Recreation Commission  
Regular Meeting  
March 3, 2009- 7pm

---

Convened 7:10pm

## ROLL CALL

Present: Marie Marston, Chair  
Tim Brown  
Bill Garrett  
Kathy Hamilton  
Phillip Lugar  
Greg Ruzicka

Absent: Tom Anderson

Staff: Laura Detweiler, Recreation & Senior Services Director  
Mark Harmon, General Services Director  
Sean Levin, Recreation Superintendent  
Teri Craig, Admin Asst

## ELECTION OF VICE CHAIR FOR FY 2008/09 (CONTINUATION OF SEAT FROM C. TRAPP)

Chair Marston opened the nomination for Vice Chair for FY 2008/09.

Motion by Commissioner Lugar to nominate Commissioner Brown as Vice Chair.

Hearing no other nominations, Chair Marston closed the nominations for Vice Chair.

Motion carried.

## INTRODUCTION & PRESENTATION OF CITY ATTORNEY - DAVID HUNT

Director Detweiler introduced the new City Attorney David Hunt to the Commission.

City Attorney Hunt gave a brief background of his experience and reviewed his duties and noted that his office would be providing an Ethics Training for all Council, Commissions & Board in the near future.

## PRESENTATION UPDATE OF MARINA PARK

The following people were introduced:

- Dave Webb, Deputy Public Works Director
- Mark Reader
- Dan Hermann
- Tim Bundy
- Richard Finkel

Dan Hermann of Rabben Hermann Designs provided a PowerPoint presentation of Marina Park to the Commission.

Dave Webb stated that the 45 day EIR will conclude on April 13. He noted that not much has changed since it was brought to the Commission except for some design refinements and minor exterior changes.

Discussion ensued regarding paving, parking, and the tennis courts.

Dave Webb noted that they are working on the cost for the project with a professional estimator.

#### DIRECTOR COMMENTS

Director Detweiler reported that she had some exciting updates such as the Community Youth Center at Grant Howald Park is under construction and within the first week renovations had begun. She noted that staff is very impressed with the work being done and look forward to it opening at the end of May in time for the summer programs to begin. She also noted that on March 10 the OASIS project will be presented to the City Council to award construction and soon after that the demolition will begin. She stated that invitations to the Ground Breaking will be mailed out within the next week for March 24 at 2:30pm and invited the Commissioner to be a part of this milestone for the City.

Director Harmon updated the Commission on 38<sup>th</sup> Street Park on the quadrants where turf has been installed in the front and DG in the back. He noted that the project is almost complete and pictures were taken before and after and will go before the Council to get reimbursed for the work. He also reminded the Commission that several months ago that they had approved probably 14 bench donations on Marine Avenue on Balboa Island and stated that they have come in and are being installed. He read an email from Bill Steward regarding the installation of the benches.

#### PUBLIC COMMENTS

None

#### CONSENT CALENDAR

1. **Minutes of the February 3, 2009.** Receive/file February 3, 2009 minutes.
2. **Parks & Operations Division Activity Report.** Receive/file monthly Activity Report for activities and upcoming projects.
3. **Recreation & Senior Services Activity Report.** Receive/file monthly Activity Report for activities and upcoming projects.

Motion by Chair Marston to accept items 1-3 of the consent calendar. Motion carried by acclamation.

#### OLD/NEW BUSINESS

4. **Special Tree Removal.** Director Harmon reminded the Commission that this request had been postponed at the January 6, 2009 meeting to allow staff the time to answer questions of the Commission and to afford some certainty with the Commission along with some history of what has been done to the tree. He noted that a 3<sup>rd</sup> party arborist had been hired to look at the tree and to offer an additional recommendation to the Commission. He stated that it was Ms. Mejia of WCA's opinion that the "subject Tomlinson Ash tree poses a hazard and should be removed... (the) City would be justified in its removal so as to protect persons and property." He reminded the Commission that Arborist John Conway and Superintendent/Arborist Dan Sereno are of the same opinion.

Discussion ensued regarding pruning and topping of trees.

Commissioner Lugar asked if the tree posed eminent danger.

Director Harmon stated that it does not and could not say when the tree would fail completely.

Chair Marston opened the public discussion.

Tom Neal stated that more than 40% of the trees on Leeward have been removed. He stated that his neighbors agree that it should be removed. He stated that anything and everything has been done to that tree. He urged the Commission to support of the removal of the tree.

Jan Vandersloot stated that he believes that no effort has been done to save this special tree; specifically diagnostics. He noted that he believes that since WCA has a contract with the City that they could be bias and side with staff. He urged the Commission to deny this request and to have an independent arborist look at the special tree.

**Chair Marston closed the public discussion.**

Discussion ensued regarding the use of WCA and suggested that should this come up again that another arborist be hired.

Director Harmon stated that three arborists have recommended that this tree be removed and that staff hate removing trees in the City.

Commissioner Lugar asked if it would set a precedent and that everyone would want to remove all the other Tomlinson Ash trees on Leeward.

Director Harmon stated that in staff would be taking a serious look at the rest of the trees and that the Commission should look for more information regarding Leeward in the months to come.

**Motion by Commissioner Garrett** to remove the Tomlinson Ash tree located at 2030 Leeward Lane. Motion carried by the following vote:

Ayes: Brown, Garrett, Hamilton, Lugar, Marston  
Nay: Ruzicka  
Absent: Anderson

5. **Bench Donation.** Director Harmon stated that staff had received a request from Alan Buchanan to replace a bench located at Ensign View Park.

**Chair Marston opened the public discussion; hearing none the public discussion was closed.**

**Motion by Commissioner Ruzicka** to approve the donation to replace a bench at Ensign View Park by Alan Buchanan. Motion carried by acclamation.

**COMMITTEE REPORTS -**

**Parks** - Commissioner Brown stated that he and Commissioners Marston & Lugar had attended the City Hall in the Park meeting to look at the draft plans for the park site. Discussion ensued regarding the site and possible water issues.

**RSS** - Chair Marston appointed Commissioner Hamilton to the committee. Commissioner Brown stated that the China Cove volleyball issue would probably be ready to come back to the Commission in April. She reminded the Commission that the Groundbreaking for OASIS was scheduled for March 24 at 2pm.

**AD- Hoc**

-**Youth Sports Liaison** - Nothing to report

-**Community Services Award** - Nothing to Report.

-**Budget**- Director Detweiler stated that staff would make a presentation to the committee at 6pm on April 7 before the Commission meeting.

**Other**

-**Marina Park** - Nothing to report.

**FUTURE AGENDA ITEMS**

Commissioner Hamilton stated that she would like a information regarding CdM State Beach, specifically:

- Maintenance Activities - Costs
- Enforcement - PD
- Revenue - parking, Fuji Grill

She stated that she was concerned about the ongoing abuse of the beach regarding the fire rings, bbq's and the use of tents on the beach.

**ADJOURNED - 8:56pm**

Submitted by: \_\_\_\_\_  
Teri Craig, Admin Assistant



## General Services Department

---

PB&R Commission Agenda  
Item No. \_\_\_\_\_  
April 7, 2009

**TO:** Parks, Beaches and Recreation Commission

**FROM:** Parks and Trees Maintenance Superintendent and Operations Support Superintendent

**SUBJECT:** *March Parks, Trees, and Operations Division Activity Report*

### **Parks Maintenance Division Activities**

1. Parks Maintenance Division staff continues working with the Public Works Department on numerous projects in planning and construction phases. The contractor for the Upper Bay View Park is currently performing the required 90 day Maintenance Period, with City takeover anticipated for early May. On March 10, 2009 Coastal Peak Park passed its final inspection, and was placed on the required 60 day Plant Establishment Period, which will be followed by a required 60 day Maintenance Period. The park is set to open in September 2009.

#### **Projects currently underway:**

- Irvine Avenue Median Project south of Bristol Street.
- Installation of new sidewalk, boardwalk, and native plantings on Dover Drive adjacent to Castaways Park.
- Grant Howald Community Center Renovation Project.
- Oasis Senior Citizen Center Groundbreaking Ceremony occurred on March 24, 2009.

**Projects that are in the planning phases:** Sunset Ridge Park, Marina Park, and China Cove Slope Repairs. The Avocado Medians, Westcliff Medians, and State Beach Landscape Improvement Projects are being proposed for funding, as part of the Fiscal Year 2009/2010 budget process under Capital Improvements.

2. General Services Department crews recently completed improvements at 38<sup>th</sup> Street Park in order to better accommodate dog owners. The Parks, Beaches, and Recreation Commission offered several community-based recommendations to Council in December. The following recommendations were approved by Council at the January 13 meeting:
  - Installation of 120' of 6" curbing

- Fabrication and installation of four informational signs and a new Doggie Bag Dispenser
- Modification or installation of irrigation
- Installation of sod and decomposed granite
- Installation of plant materials

General Services Department staff from the Field Maintenance, Operations Support, and Parks and Trees Division, in conjunction with contractors, completed the improvements on March 9 at a cost of \$8,220. The newly sodded turf area will remain closed for a least one to two more weeks to allow the new sod to establish roots. The decomposed granite area is open for the enjoyment of dogs and their owners.

*Before*



*After*



3. In the effort to provide the community with the industry's best practices through the use of new standards and technologies, staff members participate in pertinent trainings and seminars, and are encouraged to pursue certifications.

- Annual Pesticide Training – On March 11<sup>th</sup>, Pest Control Technician Greg Lewis presented at the annual Pesticide Safety Training held in the City Corporation Yard. This training is required for any municipal employee who handles or uses pesticides and herbicides. Greg holds a State license as an Agricultural Pest Control Advisor, and is the primary person responsible for monitoring the use of chemicals by City staff. Team members from the Field Maintenance, Operations Support, and Parks & Trees Divisions participated in the training.
  - Turf and Landscape Seminar – On March 18<sup>th</sup>, Kim Pederson, Paul Ramirez, Greg Lewis, and Anthony Petrarca attended the 37th Annual Target Specialty Products Seminar Series at the Long Beach Convention Center. The annual seminar is an excellent educational opportunity for licensed professionals in the pest control, turf and landscape and vegetation management industries. Staff attended the Turf and Landscape series, which included topics on: Understanding Recycled Water and its Management, Nutrient Run-Off Management, and Laws and Regulation updates.
  - Supervisory Skills Program – On March 19<sup>th</sup>, Kim Pederson and Paul Ramirez attended a Supervisory Skills Program offered by Liebert Cassidy Whitmore. It was held at the Costa Mesa Neighborhood Community Center, and was designed to assist both new and first-line supervisors in managing their workforce more productively.
4. Recently, all City supervisory staff attended a Customer Service Training. The second phase of training occurred the week of March 23<sup>rd</sup>, which included all of the General Services Department field staff members.
  5. On March 4, 2009, Park Maintenance Crew Chief Paul Ramirez attended the Turfgrass Fertility Management Seminar sponsored by Target Specialty Products. Several topics were discussed: Fertility Management, Best Management Practices (BMPs), How to take and read soil tests, and Expectations and goals when applying fertilizers. Specifically, the Managing off-site movement topic discussion provided Paul with industry updates regarding the management of run-off following lawn and field fertilization.

Unmanaged water run-off can cause chemicals to drain into storm drains and creek channels which can lead to algae bloom in the bay and the overgrowth of reeds that eventually clog drainage channels.

6. The International Society of Arborists and California Urban Forests Council recently hosted a conference at UCLA to discuss the relationship between Urban Forestry and Public Health. Parks Maintenance Supervisor Kevin Pekar attended the conference to learn more about proactive ways of addressing societal and community-based needs through urban greening practices. Conference topics included presentations on how the physical environment promotes health, a case

study in implementing a Greenhouse Gas Tree Project; and a discussion on ways to inspire community support for a successful “green” project.

7. Recently, Dr. Jan Vandersloot visited the west side of Cliff Drive Park and Castaways Park, and volunteered to remove some invasive weeds (iceplant, mustard and Johnson grass). Dr. Vandersloot, noted that he has been volunteering in helping to maintain our City parks for the past 15 years. We would like to thank and commend Dr. Vandersloot for his dedication and contribution in the maintenance of our City parks.

### **Trees Division Activities**

During the month of February, 548 trees were trimmed, no trees were removed, 3 trees were planted and crews responded to 5 emergency tree calls. The City’s tree services contractor, West Coast Arborists, is currently pruning trees within the Newport Heights, and Balboa Peninsula areas, as part of the City’s overall grid trimming schedule. Additionally, 455 City Ficus and 120 Eucalyptus trees were completed for pruning throughout the City to discourage nesting of nuisance birds, severe fruit drop and to mitigate potential limb failure.

The attached Tree Activity Report summarizes requests and field activities performed during the past month.

### **Beach Maintenance Activities**

1. Operations Support crews cleaned and staged signs for “Nowruz”, the annual Persian New Year. The celebration was held on Tuesday night, March 17<sup>th</sup>, at Corona del Mar State Beach. Crews cleaned the parking lot, beach, fire rings, and restroom facilities, as well as restocked the facilities with paper products. Informational and regulatory signage was also posted for the event to ensure a safe evening for all attendees.
2. As a result of exposure to the marine environment, several bollards in the Newport Pier Plaza required a much needed facelift. Facilities Maintenance Crew members removed and transported these bollards to Specialized Coatings in Huntington Beach, where they were sandblasted and powder coated. The process will extend the life of the bollard by 7-10 years. In previous years, crew members painted each bollard in-place every other year.



Senior Equipment Mechanic Andy Martinez welded and repaired the bollards in preparation for the powder-coating process. The Concrete Crew prepared the concrete area, and then installed the renovated bollards.

3. On Monday, February 23<sup>rd</sup>, Storm Drain/Street Sweeping Supervisor Tom Miller and Code Enforcement Division Manager John Kappeler spoke to 5<sup>th</sup> grade students

at Harbor Day School regarding the Newport watershed and water quality. The students began the day with a question/answer session, followed by a video on where storm water goes.

An outdoor demonstration highlighted the use of one of the City's smaller vacuum trucks, which is used to clean catch basin filters, and removing hazardous fluids and related nuisance water. The group then went to the Big Canyon Reservoir located across the street from the school.

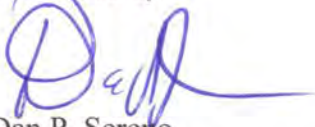


Utilities Water Production Operator Paul Heydorff concluded the presentation with a detailed look at the reservoir. This first-hand experience brought to life what the students have been studying and will hopefully usher in a new generation of guardians of our waterways.

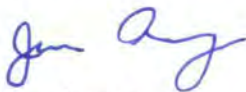


See attached General Services Department, Activities Reports for February 2009.

Submitted by:



Dan P. Sereno  
Parks and Trees Maintenance Superintendent



Jim Auger  
Operations Support Superintendent

Attachments: (A) Tree Activity Report 2007-2008  
(C) General Services Department February 2009 Activities Report



# General Services Department

Parks and Trees Division  
 Reforestation and Tree Removal Activity Report  
 Fiscal Year 2008-2009

|                             | July | August | September | October | November | December | January | February | March | April | May | June | Total |
|-----------------------------|------|--------|-----------|---------|----------|----------|---------|----------|-------|-------|-----|------|-------|
| Tree Removals               | *12  | *47    | *2        | *29     | 0        | 0        | *6      | 0        |       |       |     |      | 96    |
| Emergency Tree Removals     | 0    | 0      | 0         | 0       | **2      | **4      | 0       | 0        |       |       |     |      | 6     |
| Claim Related Tree Removals | 0    | 0      | 0         | 0       | 0        | 0        | 0       | 0        |       |       |     |      | 0     |
| Reforestation Tree Removals | 0    | 0      | 0         | 0       | 0        | 0        | ***17   | 0        |       |       |     |      | 17    |
| Problem Tree Removals       | 0    | 0      | 0         | 0       | 0        | 0        | 0       | 0        |       |       |     |      | 0     |

**Total Removals 119**

|                        |    |   |    |    |    |      |    |   |  |  |  |  |     |
|------------------------|----|---|----|----|----|------|----|---|--|--|--|--|-----|
| Trees Planted          | 28 | 0 | 20 | 11 | 25 | 0    | 32 | 3 |  |  |  |  | 119 |
| Reforestation Requests | 0  | 0 | 0  | 0  | 0  | ***1 | 0  | 0 |  |  |  |  | 1   |
| Reforestation Approved | 0  | 0 | 0  | 0  | 0  | ***1 | 0  | 0 |  |  |  |  | 1   |
| Removal Requests       | 0  | 0 | 0  | 0  | 0  | 0    | 0  | 0 |  |  |  |  | 0   |

\* Dead trees & potential liability  
 \*\* Immediate and imminent danger  
 \*\*\* Broadmoor Hills Community Association Reforestation approved by Commission



# General Services Department

Parks and Trees Division

Fiscal Year 2008-2009

## Claim Removals

| Month        | # Trees | Location |
|--------------|---------|----------|
| July-08      | 0       |          |
| August-08    | 0       |          |
| September-08 | 0       |          |
| October-08   | 0       |          |
| November-08  | 0       |          |
| December-08  | 0       |          |
| January-09   | 0       |          |
| February-09  | 0       |          |

## Problem Tree Removals

| Month        | # Trees | Location |
|--------------|---------|----------|
| July-08      | 0       |          |
| August-08    | 0       |          |
| September-08 | 0       |          |
| October-08   | 0       |          |
| November-08  | 0       |          |
| December-08  | 0       |          |
| January-09   | 0       |          |
| February-09  | 0       |          |

| <b>General Services Department<br/>Activities Report - February 2009</b> | <b>This Month</b> | <b>This Month<br/>Last Year</b> | <b>Total To Date</b> | <b>TTD Last Year</b> |
|--|-------------------|---------------------------------|----------------------|----------------------|
| <b>Asphalt/Concrete</b>  |                   |                                 |                      |                      |
| Street Patching (Tons of Blacktop)                                       | 375               | 387                             | 2,819                | 3,164                |
| Sidewalk Repaired (sq. ft.)  | 4,865             | 4,100                           | 31,352               | 39,116               |
| Curb & Gutter Replacement (lin. ft.)                                     | 309               | 316                             | 2,965                | 2,696                |
| Sweeping, Beach Cleaning, Demo Materials (tons)                          | 500               | 333                             | 3,072                | 3,221                |
| Asphalt/Concrete Recycled (tons)   | 310               | 320                             | 3,512                | 2,974                |
| <b>Signs &amp; Traffic Markings</b>                                      |                   |                                 |                      |                      |
| Signs Made   | 2,004             | 303                             | 9,587                | 1,511                |
| Signs Installed  | 121               | 195                             | 1,661                | 1,827                |
| Decals   | 80                | 19                              | 1,127                | 896                  |
| Special Purpose Signs/Banners Made                                       | 14                | 59                              | 381                  | 600                  |
| Street Striping (lin. ft.) Added/Replaced                                | 3,127             | 285,664                         | 220,182              | 726,299              |
| Pavement Markings (including reflective)                                 | 3                 | 408                             | 789                  | 1,634                |
| Parking Stalls   | 148               | 52                              | 349                  | 90                   |
| Curb Painting (lin. ft.)   | 47                | 2,554                           | 18,026               | 64,814               |
| Thermoplastic (lin. ft.)   | 0                 | 0                               | 10,170               | 4                    |
| Sign Posts Installed   | 32                | 37                              | 219                  | 264                  |
| <b>Graffiti</b>  |                   |                                 |                      |                      |
| Graffiti Incidents Removed by Staff                                      | 7                 | 17                              | 135                  | 1,855                |
| Graffiti Incidents Removed by Contractor                                 | 49                | 58                              | 645                  | 549                  |
| <b>Refuse Collection</b>   |                   |                                 |                      |                      |
| Residential (tons)   | 2,355             | 2,789                           | 24,141               | 25,244               |
| Liquid HazMat Incidents  | 4                 | 5                               | 46                   | 96                   |
| E-Waste Incidents  | 3                 | 5                               | 130                  | 225                  |
| U-Waste Incidents  | 11                | 12                              | 37                   | 75                   |
| Recyclables (tons)   | 982               | 797                             | 10,494               | 7,175                |
| <b>Trees</b>   |                   |                                 |                      |                      |
| Trimmed by Staff   | 83                | 93                              | 1,018                | 1,294                |
| Trimmed by Contractor  | 548               | 2,477                           | 6,414                | 9,570                |
| Removed  | 0                 | 11                              | 119                  | 103                  |
| Planted  | 3                 | 16                              | 119                  | 120                  |
| Roots Pruned by Contractor   | 0                 | 10                              | 103                  | 10                   |
| Roots Pruned by Staff  | 5                 | 4                               | 177                  | 191                  |
| <b>Automotive</b>  |                   |                                 |                      |                      |
| Repairs  | 245               | 267                             | 2,161                | 2,351                |
| Preventive Maintenance Completed   | 68                | 65                              | 589                  | 607                  |
| PM Labor Hours   | 121               | 156                             | 1,337                | 1,345                |
| <b>Beach Maintenance</b>   |                   |                                 |                      |                      |
| Beach Area Refuse (tons)   | 57                | 45                              | 802                  | 658                  |
| Beach Debris (tons)  | 208               | 167                             | 1,071                | 1,183                |
| <b>Sweeping/Storm Drain</b>  |                   |                                 |                      |                      |
| Gutter Miles Swept   | 3,823             | 3,697                           | 34,133               | 36,877               |
| Sweeping Debris (cubic yards)  | 398               | 361                             | 4,052                | 4,277                |
| Storm Drain Debris (cubic yards)   | 20                | 44                              | 703                  | 371                  |

## **Recreation Services Monthly Activities Report**

---

---

To: Parks, Beaches & Recreation Commission

From: Sean Levin, Recreation Superintendent

Re: Recreation Division Monthly Activities Report

---

### **ADULT SPORTS**

**LEAGUES** - With spring in full swing, the City's adult sports leagues continue to pack the playing fields and gyms from Newport Coast to West Newport! A total of 211 teams are enjoying the competition in volleyball, soccer, softball, and basketball!

**BASKETBALL** - Seventy-seven teams are already registered to play adult basketball in the spring league starting the week of Monday, March 30. One of the strong points of the league is the inclusion of the Newport Coast gym in the rotation of league sites. Tuesday and Thursday night C leagues enjoy the "jewel on the hill," the Newport Coast Community Center facility.

**SOFTBALL** - Sixty-eight teams are continuing league play in adult softball through the month of April. All spring leagues will conclude by May 8, making way for the big summer softball season which begins May 11. Registration deadline for the summer softball season is April 9, with 120 teams expected to fill out the league schedule.

**SOCCER** - Adult soccer season is bicycle kicking away at the Bonita Creek and Arroyo Park football fields in the late evenings. Forty-five teams in 4 skill classifications represent the largest amount of teams in the city's history of running adult coed league soccer. Games will continue through June 26. The active soccer fields will then be renovated throughout the City in the months of July and August, to make way for the fall season of youth football, and adult and youth soccer.

**VOLLEYBALL** - In addition, Ric Jennings' popular coed volleyball league program continues to draw 20 teams each season on Thursday nights at the Lincoln Athletic Center gym.

### **YOUTH SPORTS / YOUTH PROGRAMS**

**GIRLS BASKETBALL** - The inaugural Girls Hoops program began March 4 at the Lincoln Athletic Center Gym. Five elementary school teams will play games on Wednesday and Friday afternoons through May 6. The 5<sup>th</sup> and 6<sup>th</sup> grade girls are enjoying exciting play, with teams from Lincoln, Andersen, and Newport Coast making up the Newport Beach schools in the competition. A special thanks to the school of St. Joachim in Costa Mesa for putting a team in the league to give the girls a chance to play a team from outside the City!

**TRACK AND FIELD** - CdM, HERE WE COME! The annual City of Newport Beach/Newport Balboa Rotary Club Frank E. Anderson Memorial Track and Field Meet of Champions will be held on Friday, April 17 at Corona del Mar High School. This is the first year since the late 1970's that the meet will not be held at Newport Harbor. The new format change is the inclusion of the elementary schools in a team scoring system. In an effort to increase the meet's participation from 150 to an estimated 350, elementary schools will compete for a team award, the "Spirit Cup!" The meet includes participants born in 1992 through 2002, (7 - 15 years of age). The top 8 places in all boys' and girls' individual events will qualify to represent Newport Beach at the SCMAF-Orange County meet on Sunday, May 3. A very special thanks to Diane Daruty and CdM High School Track Coach Bill Sumner for their help in organizing the schools for this year's meet! Last but not least, a big thanks to Dr. Art Walton and the Newport Balboa Rotary Club for their continued sponsorship and outstanding volunteer support that continues to make the meet strong in Newport Beach!

**LEPRECHAUN TRACKS FOUND AT PRESCHOOL 101** - When students of Pre-school 101 arrived at their classroom on St. Patrick's Day, they were met by a giant green mess. Green paint was smeared all over the tables, gold coins, green trash and glittery shamrock confetti covering their toys and the floor. The teachers informed them that they had been visited by a Leprechaun. The children had a great time finding the clues to where the Leprechaun had been and what he was doing in their classroom. They discovered that he wanted to share his gold coins with them. They also had a great time during outside free time playing with giant bubbles that made rainbows just like the one the Leprechaun found his gold under. Maybe next year they'll catch him!

**YOUTH GOVERNMENT DAY** - Youth Government Day was held February 26. Over 30 students from our local high schools were in attendance, and they were very engaged in the process this year - as evidenced by the lively questions and opinions expressed at the mock City Council Meeting! Lunch followed for the students on the City Hall lawn, featuring finger foods from El Ranchito.



Special thanks go to those staff members who prepared the modified agenda items ahead of time and supported the process throughout the day. They were: Harbor Resources Supervisor Shannon Levin for providing the Vessel Anchoring in the Pacific Ocean; Economic Development Coordinator Katie Bowden Asst City Manager Sharon Wood, for providing Eliminating Styrofoam; and Public Works Director Steve Badum for preparing the City Hall Design Amenities staff report.

Also involved in the day's activities were the staff members who took the time to explain and discuss their jobs with the interns assigned to them. They were: Mayor Selich, Council Member Rosansky, City Manager Bludau, Sharon Wood, David Hunt, Kristy Parker, Dennis Danner, Jim Auger, Maurice Turner, Shannon Levin, Christine Fox, Jyll Ramirez, Jennifer Schulz, Tim Heatherton, Katie Bowden, Evan Sailor, Bob Stein, Tony Brine, and Laura Detweiler, and everyone else who supported the event.



**NMUSD RECOGNIZES YOUTH COUNCIL** - On March 10, the Youth Council was recognized at the Newport-Mesa Unified School District board meeting for their hard work and dedication throughout the year. Board VP Karen Yelsey highlighted their activities including Youth Government Day. Youth Council Chair Rupen Dajee made a PowerPoint presentation to with pictures from Youth Government Day. The meeting was a good opportunity for recognition from both the board and the parents of the Youth Council members.



## **AQUATICS**

Due to the overwhelming success of last year's Aquatics Training Academy, the Recreation & Senior Services Department will host its 2<sup>nd</sup> year of Pool Swim Instructor tryouts on Saturday, March 21<sup>st</sup>, 2009 at the Marian Bergeson Aquatic Center in Corona del Mar. Due to an overwhelming number of returning staff, this year only five additional swim instructors will be hired. Therefore, tryouts will be more competitive than ever. Potential swim instructors will undergo rigorous written, oral and physical exams, including first aid knowledge and swimming skills. Recreation Supervisor Adam Leu will be touring local high schools and colleges this week in search of qualified candidates.



## **CONTRACT CLASSES**

**SUMMER CAMPS** - The *Camp Newport Summer Special Brochure*, named "My Journal" was mailed out to residents and camp registration began online on Wednesday, March 11. Over 300 participants registered for a camp during the first week of open online registration. Fax-in, mail-in, and walk-in registration began on Wednesday, March 18. Once again, summer camp instructors will be encouraging early registration offering a 10% discount on all camps through May 6.





SPRING CLASSES - The Spring 09 *Newport Navigator* was sent out to residents the last week of February and registration for spring classes began on March 4. To date, Spring 09 class revenue is up \$10,000 from the previous year. We anticipate registration to remain stagnant with no growth from last year upon completion of the season.

## NEWPORT COAST COMMUNITY CENTER

REGISTRATION A SUCCESS AT NCCC!- Spring registration kicked off with a bang at the Newport Coast Community Center on March 4. With the help of a stellar front office team, lines were kept to a minimum and the center brought in over \$9,000 in registration fees during the course of the day. The registration process was extremely smooth, and more residents are taking advantage of walk-in registration at Newport Coast. As of March 17, over there have been over 500 enrollments for classes at the community center.

THE PINCH PENNY PHANTOM OF THE OPERA - Played on *March 27*  
The Newport Beach Repertory Theater presented four performances of The Pinch Penny Phantom of the Opera



## FACILITY RENTALS

During the period of Feb 16, 2009 - Mar15, 2009 there were:

- 17 Picnic/Park Area Rentals
- 19 Room Rentals
- 13 Field Rentals
- 12 Gym Rentals

There were total of (1) wedding reservation rentals for this period:  
Inspiration Point March 6, 2009 Attendance:20 people

## PARK PATROL

Requested calls are assigned visits by staff or schedule or phone requests. Customer Contacts are the number of times they stopped and spoke to customers other than requested calls. Due to the timing of the meeting, these monthly summaries will be two months behind (i.e. in June you will receive April summary)

During the month of Feb Park Patrol had the following contacts:

1. Requested Calls
  - 114 with Youth Sports Groups
  - 76 Field related issues/checks- monitored use of fields by Youth Sports organizations and club teams, turned on/off field lights, monitored closed fields during several days of rain, advised a boy and his father not to ride a motorcycle on the park grass at Buffalo Hills Park, advised NBLL staff not to park vehicles on park grass at Lincoln, advised a man at Lincoln that private lessons are not permitted without a permit from the City.

- **7 Park/Picnic/reservation issues/checks:** monitored scheduled picnic reservations at various parks, checked Mariners for lost medication, advised 2 boys to stop damaging park property with skateboards at Channel Place Park, resolved a dispute over a picnic area at Buffalo Hills Park.
- **150 Community Center issues/checks:** unlocked and locked various community center rooms/gyms, checked on weekly meetings at community rooms, checked on report of kids playing on the roof of the CYC center
- **24 Playground checks** - checked all playgrounds for safety issues and vandalism.
- **26 other-** enforced no barbecuing/fires outside of fire pits at CDM Beach. Advised numerous professional photographers that a permit is required to take photos at CDM Beach, advised instructors at Bonita Creek not to drive/park vehicles on sidewalk, reported to the PD and graffiti hotline large amounts of graffiti all over public benches, signs, and other property at CDM Beach and Lookout Point. Advised a man at Las Arenas Park not to teach private lessons at our courts,
- 1 Pre-event check
- 0 Post-event checks

2. **Public Contacts**

- 33 education
- 3 alcohol
- 32 dog related

Written Warnings Issued-

Citations Issued- 1 for a pit bull off leash at Grant Howald Park



## SPECIAL EVENT PERMITS

As of March 15, 2009, there were 41 Special Event Permits processed and issued for the year. Those events of note for this period are:

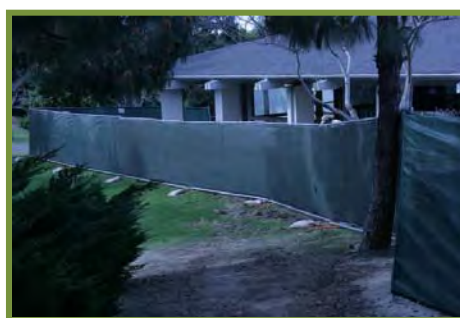
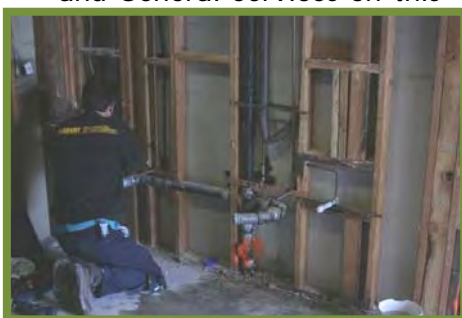
Toshiba Golf Tournament- NB Country Club, March 2-8, 2009 Attendance:20,000

Arnette/Jacks Big Day Out Surf Contest-NB Pier, March 7, 2009

Attendance: 150

## PARK & CAPITAL IMPROVEMENT PROJECTS

COMMUNITY YOUTH CENTER (CYC) CONSTRUCTION UPDATE - CYC renovation began mid-February and is expected to be completed just before summer starts. Staff is working with Public Works, Utilities and General Services on this



project, which will greatly improve the appearance and services CYC offers upon reopening.

Recreation staff is currently recruiting 8-10 new contract instructors for the Center for fall classes. Though the Center will re-open this summer, staff is planning a re-opening for early fall, which will showcase the new programs and the renovated Center.

**Coastal Peak** - February & March was a busy time at Coastal Peak! The grades were approved, the entire park was sprayed for weeds the Bermuda sod was installed in the infields and tall fescue sod around the play area. The rest of the park was scarified to open the soil for the grass to take hold. Finally, the outfields and the rest of the park was hydroseeded. We are now playing the waiting game - grow grass grow! The park is scheduled to complete a 120 day maintenance period and open for use this fall.



**MARINA PARK** - The EIR for Marina Park is currently under the 45 day public review period. Anyone who wishes to comment is welcome to contact Rosalyn Ung in Public Works. Staff has been busy during the past month focusing on the Sailing Center program and identifying specific space needs. Staff has also been working closely with Harbor Resources to identify ways to share space, resources and possibly reduce square footage from the project.

**PLAYGROUND MAINTENANCE** - The overhead swing beam on swing sets at Newport Shores and 36<sup>th</sup> Street parks were replaced. The beams were rusting at the welds and were in need of replacement for both safety and aesthetics. The removal and installation were completed by our in-house staff.



**CLIFF DRIVE PARK** - The tile walls at Cliff Drive Park were in disrepair with many sections of the tiles missing and creating a safety hazard. To address the issue the repair of the wall included removal of the tile from the unique wave wall and adding a colored concrete surface layer of blue and grey. The repair is also intended to reduce long term maintenance. The project was completed during the week of March 30.



## **SPECIAL EVENTS**

**FLASHLIGHT EGG HUNT** - The 5<sup>th</sup> Annual Flashlight Egg Hunt will be held at Bonita Creek Park on Friday, April 3<sup>rd</sup>, from 6:30 to 9:00pm at the Bonita Creek Park. This all-ages event will feature five separate egg hunts for children ages two thru 14, holiday crafts, carnival games, bouncers, photos with Freckles the Bunny, and will serve food. All proceeds will benefit Newport Beach Youth Council.



**4<sup>TH</sup> OF JULY AT MARINERS PARK** - Staff has been meeting the Mariners School Foundation parent committee on the planning the annual 4<sup>th</sup> of July event. More information to follow in the May and June reports.



**CORONA DEL MAR SCENIC 5K REGISTRATION NOW OPEN** - The Corona del Mar Scenic 5k committee has been hard at work planning for this signature event since September. Artwork featuring the old Port Theater has been developed and is featured on the event's registration brochure, which has just returned from the printer. Twenty thousand brochures will be distributed around the city and directly to running enthusiasts within the next few months. Watch for them in businesses and restaurants around town!

## Senior Services Monthly Activities Report

---

---

To: Parks, Beaches & Recreation Commission

From: Celeste Jardine-Haug, Senior Services Manager

Re: Senior Services Division Monthly Activities Report

---

**OASIS** - This month has been an exciting time for the OASIS. With almost everything cleaned out of the Center and many non-profits benefiting from the items they have been able to use, we are ready to build! The Police Department and the Fire Department have both used the facility for training. Staff and Friends volunteers are settled into the portables and are functioning well. It is amazing what can be done with a little team work!



**General Membership Meeting** - The Friends have been holding their monthly meeting and luncheon up at the Newport Coast Community Center. This is a great event for people to stay connected with OASIS. This month we had 180 people attend. We are so grateful to the staff up at Newport Coast who have assisted with set-ups, sound systems, and directional assistance.

**Construction** - On March 23<sup>rd</sup>, our construction company, KPRS, officially took over the facility and began by putting up the perimeter fencing and bringing in their construction trailers. Staff began taking pictures of the process to mark miles stones in the project in hopes of putting together a fun slide show for the re-opening event.

**PICTURES FROM THE OASIS GROUNDBREAKING — MARCH 24, 2009**



**PARTICIPANTS ATTENDING** 7,651 CUSTOMERS

**RECREATIONAL CLASSES** 2,377 CUSTOMERS

**PERSONALIZED SERVICES PROVIDED** 1,766 CUSTOMERS

Includes:

|                    |    |                        |     |
|--------------------|----|------------------------|-----|
| Blood Pressure     |    | Information/Referral   | 930 |
| Counseling-persons | 45 | Legal Assistance       | 5   |
| Eldercare          | 4  | Senior Assessment(hrs) | 30  |
| Employment         | 20 | Telephone Reassurance  | 325 |
| HICAP              | 6  | Visual Screening       | 4   |
| Housing counseling | 30 | Transportation Info    | 250 |
|                    |    | Taxes                  | 117 |

**SENIORS RECEIVING TRANSPORTATION SERVICES**

Care-A-Van/Shuttle

1,286 CUSTOMERS

**CUSTOMERS RECEIVING NOON MEALS AT THE CENTER**

1,732 CUSTOMERS

**VOLUNTEER HRS. OF SERVICES PROVIDED AT THE CENTER**

874.00 HOURS

|              |                                |                                    |
|--------------|--------------------------------|------------------------------------|
| Includes:    | Kitchen & Home Delivered Meals | (*equiv. to 9 full-time employees) |
| Front Office | Travel Office                  |                                    |
| Gift Shop    | Library                        |                                    |
| Instructors  | President                      |                                    |
| Treasurer    | Vice President                 |                                    |
| Bookkeeper   | Taxes                          |                                    |

**PARTICIPANTS IN FRIENDS OF OASIS TRAVEL/ SAILING CLUB**

205 CUSTOMERS

Day Trips

LA Union Station 25

Sailing Club- Sailors

OASIS III 45

OASIS IV 51

Long Trips

Harrah's 57

Monarch Magic 27

**SPECIAL EVENTS/SCREENINGS/LECTURES**

285 PERSONS

|                  |     |
|------------------|-----|
| Big Band Seminar | 68  |
| Tail Trekkies    | 26  |
| OASIS Golfers    | 130 |
| Computer Friends | 27  |
| UCI Lecture      | 34  |



# General Services Department

---

PB&R Commission Agenda

Item No. 4

April 7, 2009

**TO:** Parks, Beaches and Recreation Commission

**FROM:** Mark Harmon  
General Services Director

**SUBJECT:** *Castaways Park Flagpole*

## Recommendation

Staff recommends that the Parks, Beaches and Recreation Commission review the attached report and direct staff on securing funds for the purchase and installation of a flag pole located adjacent to the Marine 1/1 Memorial at Castaways Park.

## Background

At the January 6<sup>th</sup> meeting of the Commission, staff gave a short presentation regarding the installation of a flag pole at Castaways Park. Following the presentation, the Commission directed staff to notify the neighbors of the Park, who reside within 300 feet from the Park border, of the project scope.

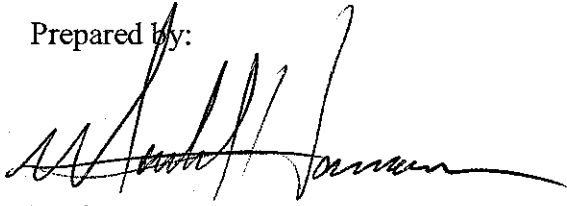
In looking at an aerial photo of the area (**Attachment #1**), staff realized that 300 feet would only include approximately 10 homes. The notification area was therefore increased to approximately 600 feet from the Park border, which allowed for the notice to be mailed to 20+ homes, including the Property Management Company of the Homeowners Association. A copy of the notice and attached photo that was mailed to each residence on March 9<sup>th</sup> is included with this report (**Attachment #2**).

As of the writing of this report, staff has received one (1) response from the mailing of the notice. This response from 15 Cape Andover (**Attachment #3**) is very supportive of the project.

## Funding

As stated during the January 6<sup>th</sup> presentation, the cost to purchase and install a 30' Flag Pole at the site of the 1/1 Memorial is approximately \$4,500. Due to the fact that this is not a budgeted project for this fiscal year, staff recommends that the Commission consider seeking a donation that would fund the installation of the flag pole and small solar light. A donation of this value would allow for the donor to place a 5x7 plaque at the site.

Prepared by:

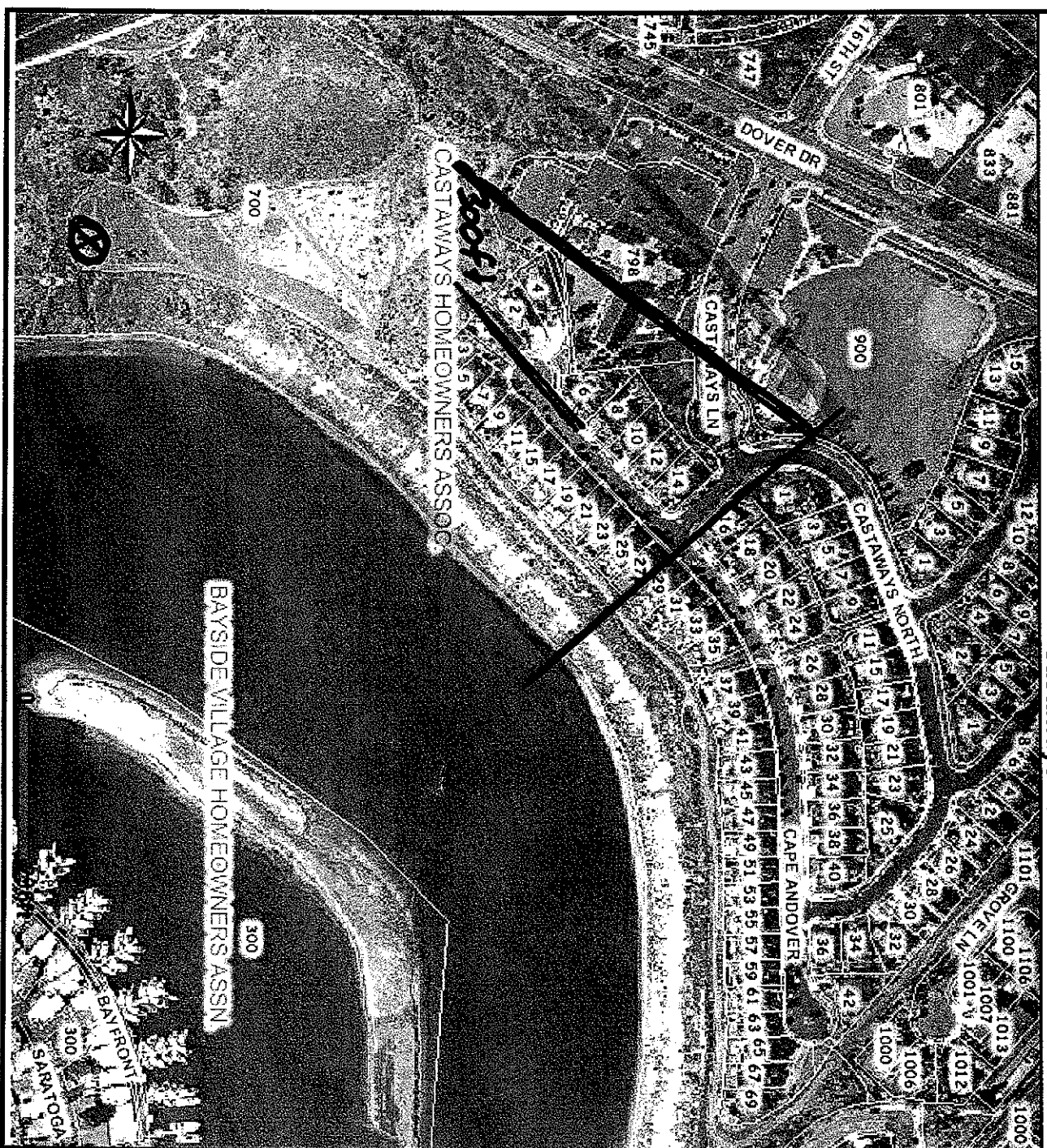
A handwritten signature in black ink, appearing to read 'Mark Harmon', written over a horizontal line.

Mark Harmon, Director  
General Services Department

- Attachments:
- 1) Map of Notification Area
  - 2) Letter to Castaways Park Neighbors
  - 3) Response from 15 Cape Andover

Castaways Park

ATTACHMENT #1



City Boundary  
 1 ft 06 sid

N



CITY OF NEWPORT BEACH

GENERAL SERVICES DEPARTMENT

Mark Harmon, Director

March 9, 2009

COPY

Dear Castaways Park Neighbor,

The Park, Beaches, and Recreation Commission has directed City staff to gather information regarding a flag pole installation at the 1/1 Marine Memorial at the south end of the Park. The attached photo shows an illustration of what this may look like when complete. The flag would be a fitting tribute to the 1/1 Marine Memorial.

The flag would be lit every night with a low wattage solar light as shown in the picture. We have a similar light on the flag pole at Old School Park (corner of Carnation Avenue and Fourth Avenue in CdM).

The Commission would like to hear from the neighbors of Castaways Park regarding this addition to the Memorial. To that end, the Commission will hear comments and answer questions at their Tuesday night, **April 7<sup>th</sup> meeting**. Commission meetings are held at **7pm in the Council Chambers at City Hall- 3300 Newport Blvd**. If you cannot attend the meeting, but would like to comment on the project, please call, e-mail, or write to the contact information below. Thank you.

Sincerely,

Parks, Beaches, and Recreation Commission

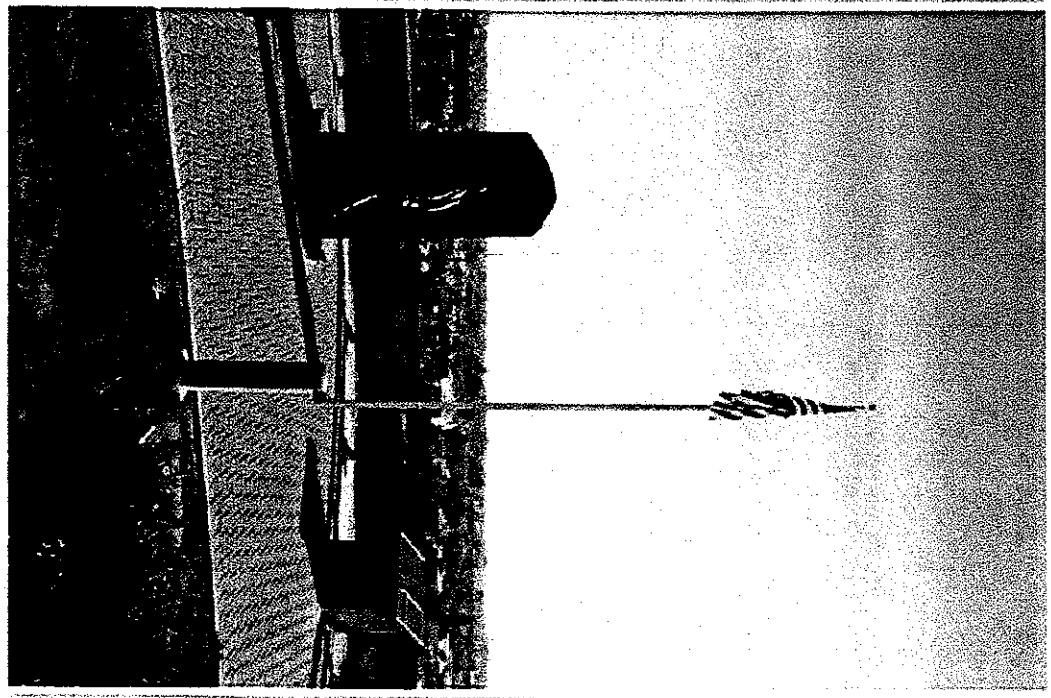
c/o Mark Harmon

[mharmon@city.newport-beach.ca.us](mailto:mharmon@city.newport-beach.ca.us)

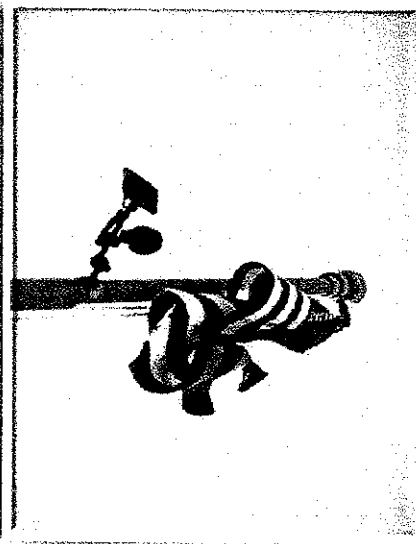
P.O. Box 1768

Newport Beach, CA 92658-8915

(949) 644-3055



- ❖ Between 1/1 Sculpture & Plaque Pedestal
- ❖ 25' - 30' Pole
- ❖ 3' x 5' Flag
- ❖ Solar-powered light



# PROPOSED INSTALLATION

ATTACHMENT #3



CITY OF NEWPORT BEACH

GENERAL SERVICES DEPARTMENT

Mark Harmon, Director

March 9, 2009

Dear Castaways Park Neighbor,

The Park, Beaches, and Recreation Commission has directed City staff to gather information regarding a flag pole installation at the 1/1 Marine Memorial at the south end of the Park. The attached photo shows an illustration of what this may look like when complete. The flag would be a fitting tribute to the 1/1 Marine Memorial.

The flag would be lit every r picture. We have a similar Carnation Avenue and Fourt

Lawrence H & Muriel A Benson  
15 Cape Andover  
Newport Beach Ca 92660-8401

as shown in the bl Park (corner of

The Commission would like to hear from the neighbors at Castaways Park regarding this addition to the Memorial. To that end, the Commission will hear comments and answer questions at their Tuesday night, April 7<sup>th</sup> meeting. Commission meetings are held at 7pm in the Council Chambers at City Hall- 3300 Newport Blvd. If you cannot attend the meeting, but would like to comment on the project, please call, e-mail, or write to the contact information below. Thank you.

Sincerely,

Parks, Beaches, and Recreation Commission

c/o Mark Harmon

mharmon@city.newport-beach.ca.us

P.O. Box 1768

Newport Beach, CA 92658-8915

(949) 644-3055

GREAT JOB  
YOU HAVE OUR  
SUPPORT 100%

Lawrence Benson



## General Services Department

---

PB&R Commission Agenda

Item No. \_\_\_\_\_

April 7, 2009

**TO:** Parks, Beaches and Recreation Commission

**FROM:** General Services Director

**SUBJECT:** *Reforestation Request*

### Recommendation

Staff recommends that the Parks, Beaches and Recreation Commission consider the reforestation request of Ron Centra, property owner at 507 Rockford Place.

### Discussion

City Council Policy G-1, Reforestation of City Trees requires that individual property owners living within a legally established community association area with mandatory association membership must petition for reforestation through their respective association.

Per City Council Policy G-1, the Cameo Community Association, Board of Directors approved the removal of the City Melaleuca quinquenervia parkway tree adjacent to 507 Rockford Place (Attachment B).

This particular type of tree requires a minimum parkway of 6 feet. However, this mature tree specimen is planted within a 5 foot parkway and considered an incorrect species for this tree site.

The property owner has complied with the requirements of Policy G-1, and has agreed to assume the full cost of the removal and replacement of the City tree, approximately \$598.00 (\$195 for a 24" box replacement tree and \$403 removal).

Staff has attached a Tree Inspection Report, Tree Inventory Detail, and photographs related to the request.

Mr. Ronald Centra, the Cameo Community Association, Council Member Nancy Gardner, have received a copy of this report and a notice of the Commission meeting.

Submitted by:



Mark Harmon

Director of General Services

- Attachments:
- (A) Reforestation Check List
  - (B) Cameo Community Association, Resolution of the Board of Directors
  - (C) Tree Removal Request Application
  - (D) Tree Inspection Report
  - (E) Tree Inventory Detail
  - (F) Policy G-1, Retention or Removal of City Trees, Reforestation of City Trees, pages 6 - 9
  - (G) Pictures
  - (H) Aerial Map



# General Services Department

## Reforestation Check List

|  | Verified by: | Urban Forester                      | Parks and Trees Superintendent      | General Services Director |
|--|--------------|-------------------------------------|-------------------------------------|---------------------------|
| <input type="checkbox"/> Legally Established Homeowners Association  |              | <input checked="" type="checkbox"/> | <input checked="" type="checkbox"/> | <input type="checkbox"/>  |
| <input type="checkbox"/> Individual Private Property Owner(s)  |              | <input type="checkbox"/>            | <input type="checkbox"/>            | <input type="checkbox"/>  |
| <input type="checkbox"/> Reforestation Application   |              | <input checked="" type="checkbox"/> | <input checked="" type="checkbox"/> | <input type="checkbox"/>  |
| <input type="checkbox"/> (90) days Reforestation Request Compliance  |              | <input checked="" type="checkbox"/> | <input checked="" type="checkbox"/> | <input type="checkbox"/>  |
| <input type="checkbox"/> Resolution of the Board of Directors, Minutes, Notices (Legally Established Homeowners Association) |              | <input checked="" type="checkbox"/> | <input checked="" type="checkbox"/> | <input type="checkbox"/>  |

### Damage/Impact

|  |                                     |                                     |                          |
|--|-------------------------------------|-------------------------------------|--------------------------|
| <input type="checkbox"/> Blue Water View Impact            | <input type="checkbox"/>            | <input type="checkbox"/>            | <input type="checkbox"/> |
| <input checked="" type="checkbox"/> Incorrect Tree Species | <input checked="" type="checkbox"/> | <input checked="" type="checkbox"/> | <input type="checkbox"/> |
| <input type="checkbox"/> Hardscape Damage:                 | <input type="checkbox"/>            | <input type="checkbox"/>            | <input type="checkbox"/> |
| <input type="checkbox"/> Curb/Gutter                       |                                     |                                     |                          |
| <input type="checkbox"/> Sidewalk                          |                                     |                                     |                          |
| <input type="checkbox"/> Utility                           |                                     |                                     |                          |

### Individual Private Property Owner(s) ONLY

|  | Verified by: | Urban Forester           | Parks and Trees Superintendent | General Services Director |
|--|--------------|--------------------------|--------------------------------|---------------------------|
| <input type="checkbox"/> Written Agreement by Individual Property Owner(s) |              | <input type="checkbox"/> | <input type="checkbox"/>       | <input type="checkbox"/>  |
| <input type="checkbox"/> Staff Approved Petition                           |              | <input type="checkbox"/> | <input type="checkbox"/>       | <input type="checkbox"/>  |
| <input type="checkbox"/> Property Owners Signatures Verified               |              | <input type="checkbox"/> | <input type="checkbox"/>       | <input type="checkbox"/>  |
| <input type="checkbox"/> Meets 60% Reforestation Criteria:                 |              | <input type="checkbox"/> | <input type="checkbox"/>       | <input type="checkbox"/>  |
| #__Property owners notified %__Agreed with removal                         |              | <i>gc</i>                | <i>Q</i>                       |                           |

Meets **Minimum** Reforestation Requirements:  YES  NO

Department Signature: *[Signature]*

Date: *3/16/09*

City Attorney Reviewed: \_\_\_\_\_

Date: \_\_\_\_\_

Cameo



Community Association

Ron Centra  
507 Rockford Place  
Corona del Mar, CA 92625

Dear Mr. Centra,

The Board of Directors appreciated your interest in providing a safe and danger free community. The Melaleuca Tree at the front of your residence is certainly a liability with the breaking of the concrete and the leaning out over the street. The Board of Directors discussed the situation at length and feel that approving the resolution allowing you to remove this tree is appropriate.

❖ **The Board of Directors for the Cameo Community Association motioned and unanimously approved the removal of this Melaleuca Tree in the effort to reduce and eliminate any hazard.**

Please give this letter to the entity that is requesting it, City of Newport Beach, and allow them to handle this situation for you. I will send a copy of this to Cameo's contact for the reforestation program John Conway as he may know how to best handle this.

If there is anything else I can do for you please do not hesitate to ask.

Sincerely,

Gavin A. Kuehn Sr., CCAM®  
Associate Director, Managing Agent  
Cameo Community Association  
At the Direction of the Board of Directors

Cc: John Conway City of Newport Beach  
Lot File  
Board of Directors

Cameo Community Association is managed by:  
Villageway Property Management – P.O. Box 4708 – Irvine, CA 92616  
Tel 949-450-1515 Fax 949-585-0146 Email: [gavink@villageway.com](mailto:gavink@villageway.com)



# CITY OF NEWPORT BEACH

## General Services Department

### Tree Removal or Reforestation Application

Per City Council Policy G-1 (Retention or Removal of City Trees), I am requesting a tree removal(s) to be reviewed by staff and submitted to either the Parks, Beaches, and Recreation Commission for consideration at a future meeting or the appropriate City approving authority. Commission meetings are held on the first Tuesday of each month (except for holidays) at 7PM at the Council Chambers.

ONE TREE

Indicate the number and specie(s), (if known) of tree(s).

Located at: 507 ROCKFORD PL. C.D.M.

Please be as specific as possible

#### Requestor

- Property Owner
- Community Association
- Other \_\_\_\_\_

#### Address/ Phone (Daytime) / Email

507 ROCKFORD PL.  
C.D.M. 92625  
949-720-1565

Signature: [Handwritten Signature]

Date: 3/5/09

Print Name: RONALD CENTRA

**If this is a reforestation request proceed to the reverse side of this form**

#### Section A. For Tree Removal Requests Only

#### Removal Criteria (Check one or more)

Please provide copies of photos, bills, documents or any other related material that will verify the checked items.

Proven and repeated history of **damaging** public or \*private, sewers, water mains, roadways, sidewalks, curbs, walls, fences, underground utilities or foundations.  
 (\*Greater than \$500)

Repeated history of **significant interference** with street or sidewalk drainage.

**Dying** Has no prospect of recovery.

**Diseased** Cannot be cured by current arboricultural methods.

**Hazardous** In advanced state of decline with no prospect of recovery.

**Hazardous** Defective, potential to fail, could cause damage to persons/property upon failure. Assessment by Urban Forester will identify structural defects, parts likely to fail, targets-if fails, procedures and actions to abate.

**Beautification Project** In conjunction with a City Council-approved City, commercial, neighborhood, or community association beautification program

## Section B. For Reforestation Requests Only

Reforestation is the concept of systematically replacing Problem or All Other Trees which are creating hardscape and/or view problems and cannot be properly trimmed, pruned or modified to alleviate the problem(s) they create, or those which have reached their full life, and are declining in health, or are simply the wrong species of tree(s) for the planted location.

### As initiated by:

- Property Owner  
 Community Association  
 Other \_\_\_\_\_

### Check all items applicable:

- Tree(s) causing curb, gutter, sidewalk or underground utilities damage.  
 Wrong tree species for location  
 View encroachment  
 Area has clearly defined contiguous boundaries that include the tree(s) proposed.  
 Residential communities, neighborhoods, or business organizations who apply for reforestation must submit a petition signed by a minimum of 60% of the property owners within the area defined.  
 Areas represented by a legally established community association, may submit a resolution of the Board of Directors formally requesting a reforestation.  
 Individual property owners must submit a petition signed by a minimum of 60% of a maximum of 30 private property owners (up to 15 contiguous private properties on both sides of the street up to 500' in either direction from the location of the proposed reforestation site) as well as the endorsement of the appropriate homeowners' association, if applicable.

\*A request for reforestation requires a written agreement submitted to the Parks, Beaches, and Recreation Commission by the petitioning sponsor (Individual private property owner(s) or group) to pay 100% of the costs of the removal and replacement of the public tree(s) in advance of any removal activity. The actual removal and replanting will be coordinated by the General Services Department using the City tree maintenance contractor.

\*There shall be a minimum of a one-for-one replacement of all trees removed in reforestation projects. Replacement trees shall be a minimum size of 24" boxed trees and cost \$195 per tree, unless the parkway space will not accommodate a 24" boxed tree or a tree cannot be planted due to planting restrictions contained in City Council Policy G-6.

**This form does not replace the requirements of any of the City tree policies. Its use is intended to expedite the tree removal or reforestation requests and to ensure compliance with all City requirements. Please refer to individual City Council Policy G-1 for additional information.**

Requestor Comments:

THE TREE IS DAMAGING THE SIDEWALK,  
DRIVEWAY APPROACH AND IS WITHIN A VERY SHORT  
DISTANCE FROM THE MAIN GAS LINE, ALSO LEAVING  
BADLY TO ONE SIDE.

THANK YOU

*Removals, except emergency, will be subject to the notification processes, time frames and authority as specified in the City Council G-1 Policy.*



## General Services Department

### TREE INSPECTION REPORT

**Property Owner:** Ron Centra

**Address:** 507 Rockford Place  
Corona Del Mar, CA 92625

**Request:** The property owner is requesting of the General Services Department staff, the removal and replacements of a City Melaleuca parkway tree, based on the criteria of City Council Policy G-1, Reforestation of City Trees.

**Tree Species/Site:** Melaleuca quinquenervia – Cajeput tree

**Designated Street Trees:** Magnolia grandiflora 'Little Gem' – Little Gem Magnolia

**Estimated Tree Value:** \$1,380.00

**Damage:** Hardscape damage

**Work History:** The General Services Department, Field Maintenance Division has the following work history performed at this location:

- February 2001 – 40 SF of sidewalk repaired
- December 2006 – 180 SF of sidewalk repaired

**Parkway:**            **(X) Concrete**            **Brick**            **Turf**            **Other**

**Comments:** A field inspection confirmed a healthy tree specimen. Although, the tree is leaning, this is due to its growth characteristic. There is no evidence of a potential hazard or liability.

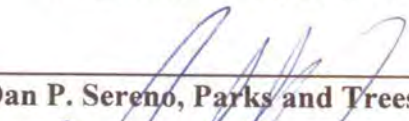
This particular type of tree requires a minimum parkway of 6 feet. However, this mature tree specimen is planted within a 5 foot parkway and considered an incorrect species for this tree site.

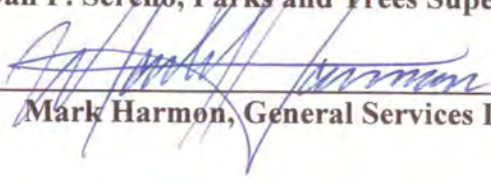
The property owner has indicated the following concerns on his tree removal application:

- Leaning tree
- Damaged driveway approach
- Curb, gutter and sidewalk damage
- Tree planted at close proximity to the gas meter

Inspected by:  Date: March 9, 2009  
John Conway, Urban Forester

**Recommendation:** Forward the reforestation request to the Parks, Beaches and Recreation Commission for review and approval.

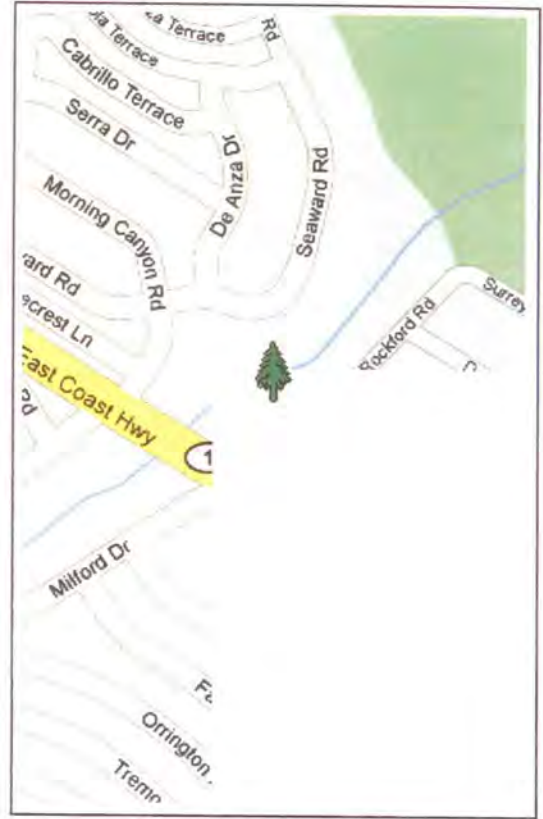
Reviewed by:  Date: March 9, 2009  
Dan P. Sereno, Parks and Trees Superintendent

Reviewed by:  Date: 3/16/09  
Mark Harmon, General Services Director

Show/Hide Map    Print Report

### Inventory Detail

Dist: 9  
 Address: 507 ROCKFORD PL  
 Fictitious: No  
 Location: Front-2  
 On Address: 507 ROCKFORD PL  
 Species: *Melaleuca quinquenervia*, CAJEPUT TREE  
 DBH/Height: 7-12 / 15-30  
 Parkway Size: 5  
 Utility Overhead: No  
 Sidewalk Damage: No  
 Recommended Maintenance: Grid Trim  
 Estimated Value \$1,380



### WCA Work History

| Date      | Work Type     | Amount  | Job# |
|-----------|---------------|---------|------|
| 8/4/2004  | Grid Pruning  | \$39.00 | 7334 |
| 5/15/2003 | Grid Trimming | \$39.00 | 5154 |
| 7/28/2000 | Grid Trimming | \$39.00 | 3581 |

### Other Work History

| Date | Work Type | Crew | Acct# | Min |
|------|-----------|------|-------|-----|
|------|-----------|------|-------|-----|

General Services Director or designee concurs, then the applicant, the adjoining owners, private property owners on either side of the street within 500' in each direction of the tree location and a legally established community association, if applicable, shall be notified of the decision to remove or retain the tree within 30 days of the proposed removal. A legally established community association is responsible for notification of all association members pursuant to their established procedure. The General Services Director, or a designee, shall prepare a staff report for a regularly scheduled PB&R Commission meeting of all trees recommended for removal, except for those trees categorized in Paragraph C. (dead, diseased, or dying trees) or Paragraph E (claims and safety issues) in the preceding section on All Other City Trees. Only an applicant, an adjoining property owner, or a legally established community association, the City Manager, a PB&R Commissioner, or a Councilmember may appeal the decision of the General Services Director not to remove a tree to the Commission. The Commission, in considering any appeal, shall determine whether the removal meets the criteria outlined in this Policy, as well as any unique factors which may be pertinent to the removal or retention of tree(s). The decision of the Commission will be considered final unless called up by at least one Councilmember or the City Manager.

The General Services Department will delay any tree removal(s) for at least 14 calendar days following the date of the Commission decision in order to allow time for a Councilmember or the City Manager to call the item.

The City will replace all trees removed in accordance with the All Other City Trees removal criteria on a one for one basis. Replacement trees will be a minimum of a 36" boxed size. If 36" boxed trees are not available, or funding, or space constraints prevent planting of a large tree, then a minimum of a 24" boxed tree will be planted. The full costs of removal and replacement of Special or All Other Tree(s) will be the sole responsibility of the City, unless an applicant voluntarily pays for a new tree(s).

#### REFORESTATION OF CITY TREES

The concept of systematically replacing Problem or All Other Trees which are creating hardscape and/or view problems and cannot be properly trimmed, pruned or modified to alleviate the problem(s) they create, or those which have reached their full life, and are declining in health, or are simply the wrong species of trees for the planted location is referred to as reforestation. The Urban Forester shall make a finding for the latter category of inappropriate tree species for a specific location. His determination may be appealed to the General Services Director whose decision will be final.

It is recognized and acknowledged that City trees were planted many years ago and in some cases were planted with specific species that when fully mature cause damage to curb, gutter, sidewalk or underground utilities. Within the geographical boundaries of certain view neighborhoods, City street trees may encroach into blue water views from public and private property depending on the length of time since the trees were last trimmed, or the age and height of the trees. In other cases, the wrong species of tree was planted originally and simply does not conform to the current treescape or represents a safety hazard.

Arborists continue to develop lists of tree species which will grow in restricted parkway areas without causing significant damage to curb, gutter, sidewalk, utilities or loss of views. The City Street Tree Designation List, which specifies a species for each City street reflects an effort by the City to prescribe appropriate tree species that will not cause future problems.

As a City which understands the importance of trees and the beauty they bring to a community, the City desires to continually improve the urban forest through reforestation. In areas where City trees have been removed through City initiation, the City will endeavor to replace the trees with the appropriate designated City tree.

Individual private property owners, as well as legally established community associations, may apply for single or multiple tree reforestations in their respective area by submitting a request to the General Services Director for consideration by the Commission that meets the following requirements:

- A. The proposed area must have clearly defined contiguous geographical boundaries that include the tree(s) proposed for removal and replacement, street address(es), block number(s), or other geographical information. This section applies to individual and group requests.
- B. Residential communities, neighborhoods, or business organizations who apply for reforestation must submit a petition signed by a minimum of 60% of the property owners within the area defined for reforestation. The petition content must be approved and dated by City staff prior to distribution by the petitioner. The staff-approved petition must be distributed by the petitioner to a maximum of 30 private property owners (up to 15 contiguous private property owners on both sides of the street up to 500' in either direction from the location of the proposed reforestation). Signatures by non-property owners are not acceptable for petition purposes. All petition signatures shall be verified by City staff for

property owner status of the person(s) signing the petition. As an alternative to the above requirements, areas represented by a legally established community association, may submit a resolution of the Board of Directors formally requesting a reforestation with a statement that all members of the community association having their residential views affected, have been officially notified and given an appropriate opportunity to respond before the Board voted on the request. Individual private property owners living within a legally established community association area with mandatory association membership must petition for reforestation through their respective association.

- C. Individual private property owners not residing within a legally established community association area may submit individual requests for single or multiple tree reforestations. The applicant must submit a petition signed by a minimum of 60% of a maximum of 30 private property owners (up to 15 contiguous private properties on both sides of the street up to 500' in either direction from the location of the proposed reforestation site) as well as the endorsement of the appropriate homeowners' association, if applicable. The petition content must be approved and dated by staff prior to distribution. All petition signatures shall be verified by City staff for private property owner status of the person(s) signing the petition.
- D. A written agreement must be submitted to the Parks, Beaches, and Recreation Commission by the petitioning sponsor (individual private property owner(s) or group) to pay 100% of the costs of the removal and replacement of the public tree(s) in advance of any removal activity. The actual removal and replanting will be coordinated by the General Services Department. The total costs shall include only the contractor's removal and replacement costs and be paid in advance of any removal actions.
- E. The replacement tree(s) for reforestation shall be the Designated Street Tree(s) as prescribed by City Council Policy G-6, or the organization must request and obtain approval from the Commission of the designation of a different tree species prior to submitting any reforestation request for a tree species other than the designated street tree. This section applies to individual or group requests.
- F. There shall be a minimum of a one-for-one replacement of all trees removed in reforestation projects. Replacement trees shall be a minimum size of 24" boxed trees, unless the parkway space will not accommodate a 24" boxed tree or a tree cannot be planted due to planting restrictions contained in Council Policy G-6. If

there is not room for the replacement tree(s) at a specific site as prescribed by City Council Policy G-6, then the replacement tree(s) shall be planted in a public area in the same neighborhood at the option of the petitioner. This section applies to individual or group requests.

- G. Reforestation requests must be completed and submitted in a timely manner by the petitioner. Petitions that are dated more than 90 days in arrears from date stamped by staff before distribution will not be forwarded to the PB&R Commission for consideration.

The decision of the Commission on reforestation requests will be considered final unless called up by at least one Councilmember or the City Manager.

#### TREE MAINTENANCE

The City shall require the proper care and watering of replacement trees by the reforestation petitioner to ensure their proper growth and development as outlined in City Council Policy G-6. Furthermore, no person shall tamper with City trees in violation of Section 13.08.040 of the Municipal Code. Further, the City will endeavor to fund the care of the Urban Forest to the highest level possible through the efficient use of regular tree trimming, root pruning, root barrier and pesticide programs.

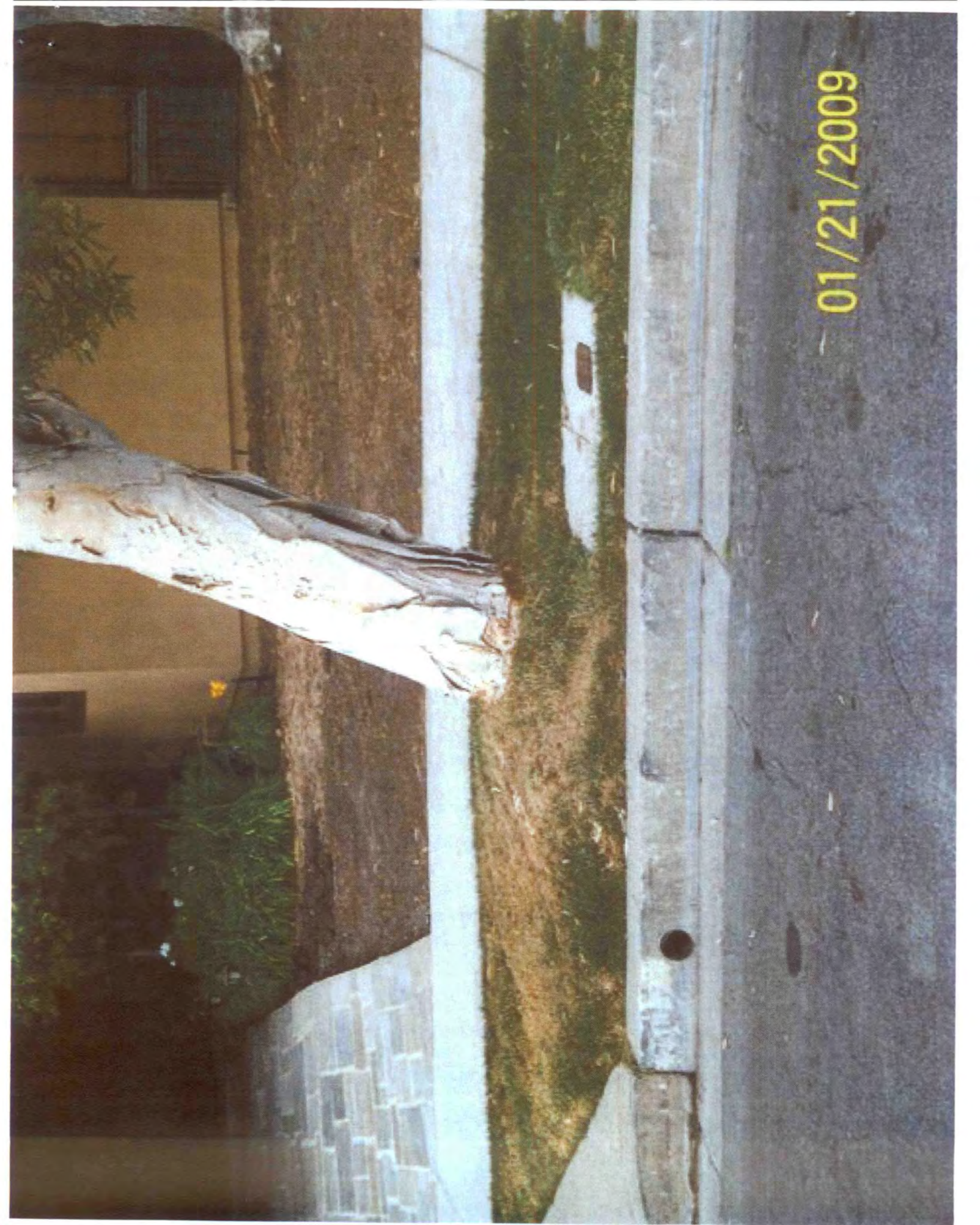
#### ENCROACHMENT AND DEMOLITION PERMITS

All encroachment permits (permits for private property development which are proposed to encroach upon the City right of way) or demolition permits that involve the removal or replacement of City tree(s) must be specifically noticed by the property owner to City staff prior to the building and/or demolition permit process whenever possible. The proposed construction plans must indicate preservation of existing City trees wherever possible (exempt: dead, dying, or in an advanced state of decline). If the proposed development, as deemed by the General Services Director, requires the removal of City trees, the property owner must submit a tree removal request to the General Services Director, shall pay all related tree removal and replacement costs (one for one replacement) and meet all provisions of Council Policies L-2 and L-6 and City Ordinances 13.08 and 13.09. Approval or disapproval of all tree removal/replacement requests associated with encroachment and demolition permits will be the responsibility of the General Services Director or a designee.

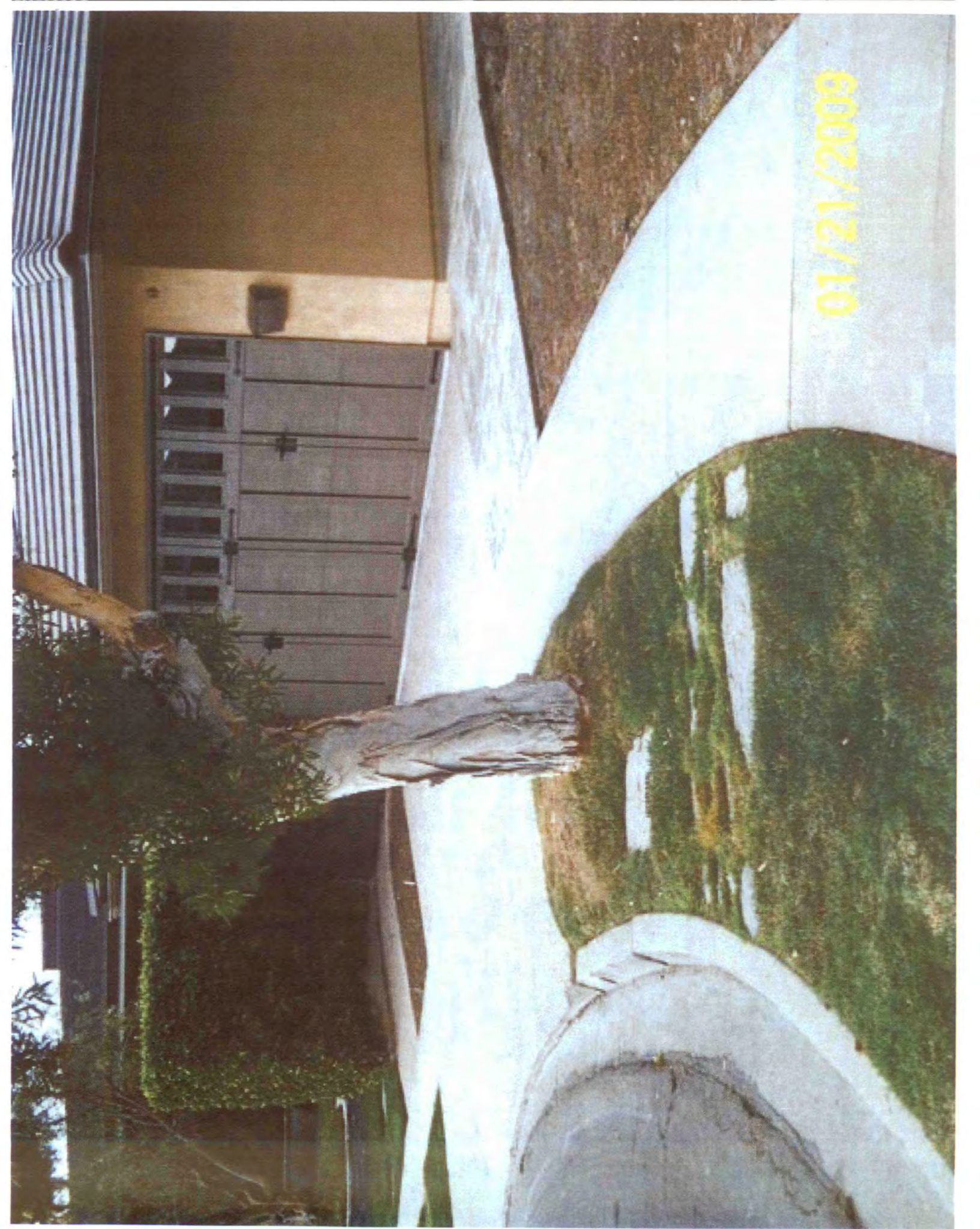


01/21/2009

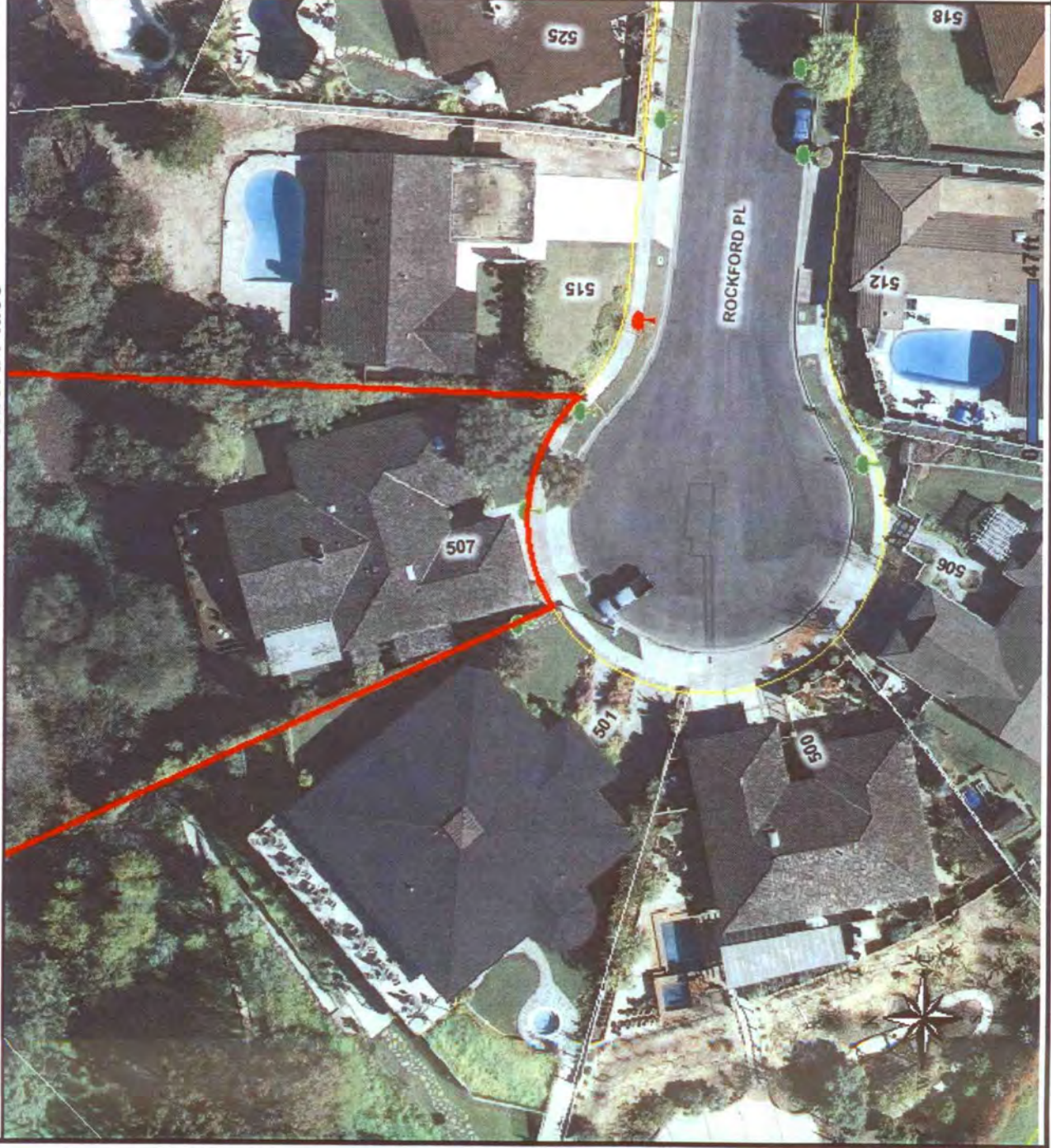
01/21/2009



01/21/2009



507 Rockford Place



-  Selected Features
-  City Boundary
-  Trees
-  Vacant Tree Site



## General Services Department

PB&R Commission Agenda  
Item No. 6  
April 7, 2009

**TO:** Parks, Beaches and Recreation Commission  
**FROM:** General Services Director  
**SUBJECT:** *Reforestation Request*

### Recommendation

Staff recommends that the Parks, Beaches and Recreation Commission consider for approval the reforestation request of the Broadmoor Hills Community Association.

### Discussion

The Broadmoor Hills Community Association has submitted the attached Tree Reforestation Request form pursuant to City Council Policy G-1, requesting the reforestation of one City parkway tree within the Broadmoor Hills community.

The Association is requesting the tree removal under the City Council Policy G-1, Reforestation of City Trees guidelines, and has met all requirements. Broadmoor Hills Community Association will assume the full costs of the removal and replacement of the tree, approximately \$406.00 (\$195 for a 24" box replacement tree and \$211 removal).

Staff has attached the Tree Inspection Report, Tree Inventory Detail, and photograph related to the request.

Please note, the Broadmoor Community Association has stated that this reforestation request is an addendum to the reforestation request that was approved by Commission at the December 2, 2008 meeting (see attached Tree Removal Application), however, staff does not support this opinion and has submitted this reforestation request as a separate request.

The President, Landscape Chair of the Broadmoor Hills Community Association and Council Member Nancy Gardner have received a copy of this report and a notice of the April 7 Commission meeting.

Submitted by:

A handwritten signature in blue ink, appearing to read "Mark Harmon".

Mark Harmon

- Attachments:
- (A) Reforestation Check List
  - (B) Tree Removal Request Application
  - (C) Board of Directors Meeting Minutes dated January 12, 2009
  - (D) Broadmoor Hills Community Bulletin Board Notice, February 2009
  - (E) Tree Inspection Report
  - (F) Tree Inventory Detail
  - (G) Policy G-1, Retention or Removal of City Trees, Reforestation of City Trees, pages 6 - 9
  - (H) Picture
  - ( I ) Map



# General Services Department

## Reforestation Check List

|                          |   |                                     |   |                           |
|--------------------------|---|-------------------------------------|---|---------------------------|
|                          | Verified by: <i>Je</i>  | Urban Forester                      | Parks and Trees Superintendent <i>(P)</i> | General Services Director |
| <input type="checkbox"/> | Legally Established Homeowners Association  | <input checked="" type="checkbox"/> | <input checked="" type="checkbox"/>       | <input type="checkbox"/>  |
| <input type="checkbox"/> | Individual Private Property Owner(s)  | <input type="checkbox"/>            | <input type="checkbox"/>                  | <input type="checkbox"/>  |
| <input type="checkbox"/> | Reforestation Application   | <input checked="" type="checkbox"/> | <input checked="" type="checkbox"/>       | <input type="checkbox"/>  |
| <input type="checkbox"/> | (90) days Reforestation Request Compliance  | <input checked="" type="checkbox"/> | <input checked="" type="checkbox"/>       | <input type="checkbox"/>  |
| <input type="checkbox"/> | Resolution of the Board of Directors, Minutes, Notices (Legally Established Homeowners Association) | <input checked="" type="checkbox"/> | <input checked="" type="checkbox"/>       | <input type="checkbox"/>  |

### Damage/Impact

|                          |                                      |                                     |                                     |                          |
|--------------------------|--------------------------------------|-------------------------------------|-------------------------------------|--------------------------|
| <input type="checkbox"/> | Blue Water View Impact               | <input type="checkbox"/>            | <input type="checkbox"/>            | <input type="checkbox"/> |
| <input type="checkbox"/> | Incorrect Tree Species               | <input checked="" type="checkbox"/> | <input checked="" type="checkbox"/> | <input type="checkbox"/> |
| <input type="checkbox"/> | Hardscape Damage:                    | <input type="checkbox"/>            | <input type="checkbox"/>            | <input type="checkbox"/> |
|                          | <input type="checkbox"/> Curb/Gutter |                                     |                                     |                          |
|                          | <input type="checkbox"/> Sidewalk    |                                     |                                     |                          |
|                          | <input type="checkbox"/> Utility     |                                     |                                     |                          |

### Individual Private Property Owner(s) ONLY

|                          |   |                          |                                |                           |
|--------------------------|---|--------------------------|--------------------------------|---------------------------|
|                          | Verified by:                                      | Urban Forester           | Parks and Trees Superintendent | General Services Director |
| <input type="checkbox"/> | Written Agreement by Individual Property Owner(s) | <input type="checkbox"/> | <input type="checkbox"/>       | <input type="checkbox"/>  |
| <input type="checkbox"/> | Staff Approved Petition                           | <input type="checkbox"/> | <input type="checkbox"/>       | <input type="checkbox"/>  |
| <input type="checkbox"/> | Property Owners Signatures Verified               | <input type="checkbox"/> | <input type="checkbox"/>       | <input type="checkbox"/>  |
| <input type="checkbox"/> | Meets 60% Reforestation Criteria:                 | <input type="checkbox"/> | <input type="checkbox"/>       | <input type="checkbox"/>  |

#\_\_ Property owners notified %\_\_ Agreed with removal

Meets **Minimum** Reforestation Requirements:  YES  NO *(Signature)*

Department Signature: *(Signature)*

Date: \_\_\_\_\_

City Attorney Reviewed: \_\_\_\_\_

Date: \_\_\_\_\_



# CITY OF NEWPORT BEACH

## General Services Department

### Tree Removal or Reforestation Application

Per City Council Policy G-1 (Retention or Removal of City Trees), I am requesting a tree removal(s) to be reviewed by staff and submitted to either the Parks, Beaches, and Recreation Commission for consideration at a future meeting or the appropriate City approving authority. Commission meetings are held on the first Tuesday of each month (expect for holidays) at 7PM at the Council Chambers.

(1) FICUS RUBIGINOSA

Indicate the number and specie(s), (if known) of tree(s).

Located at: 2706 LIGHTHOUSE LN. (GOLDING), CDM  
BROADMOOR HILLS

Please be as specific as possible

#### Requestor

|                                     |                       |
|-------------------------------------|-----------------------|
| <input type="checkbox"/>            | Property Owner        |
| <input checked="" type="checkbox"/> | Community Association |
| <input type="checkbox"/>            | Other _____           |

#### Address/ Phone (Daytime) / Email

2601 BLUE WATER DR  
CORONA DEL MAR  
(949) 644-2497  
akfinnell@aol.com

Signature: Gail Finnell

Date: 2-23-2009

Print Name: GAIL FINNELL, BROADMOOR HILLS LANDSCAPE CHAIR

**If this is a reforestation request proceed to the reverse side of this form**

#### Section A. For Tree Removal Requests Only

##### Removal Criteria (Check one or more)

Please provide copies of photos, bills, documents or any other related material that will verify the checked items.

- Proven and repeated history of **damaging** public or \*private, sewers, water mains, roadways, sidewalks, curbs, walls, fences, underground utilities or foundations.  
(\*Greater than \$500)
- Repeated history of **significant interference** with street or sidewalk drainage.
- Dying** Has no prospect of recovery.
- Diseased** Cannot be cured by current arboricultural methods.
- Hazardous** In advanced state of decline with no prospect of recovery. Defective, potential to fail, could cause damage to persons/property upon failure. Assessment by Urban Forester will identify structural defects, parts likely to fail, targets-if fails, procedures and actions to abate.
- Beautification Project** In conjunction with a City Council-approved City, commercial, neighborhood, or community association beautification program.

## Section B. For Reforestation Requests Only

Reforestation is the concept of systematically replacing Problem or All Other Trees which are creating hardscape and/or view problems and cannot be properly trimmed, pruned or modified to alleviate the problem(s) they create, or those which have reached their full life, and are declining in health, or are simply the wrong species of tree(s) for the planted location.

### As initiated by:

|                                     |                       |
|-------------------------------------|-----------------------|
| <input type="checkbox"/>            | Property Owner        |
| <input checked="" type="checkbox"/> | Community Association |
| <input type="checkbox"/>            | Other _____           |

AT THE REQUEST OF THE PROPERTY OWNER  
(GOLDING)

### Check all items applicable:

- |                                     |  |
|-------------------------------------|--|
| <input type="checkbox"/>            | Tree(s) causing curb, gutter, sidewalk or underground utilities damage.  |
| <input checked="" type="checkbox"/> | Wrong tree species for location  |
| <input type="checkbox"/>            | View encroachment  |
| <input type="checkbox"/>            | Area has clearly defined contiguous boundaries that include the tree(s) proposed.  |
| <input type="checkbox"/>            | Residential communities, neighborhoods, or business organizations who apply for reforestation must submit a petition signed by a minimum of 60% of the property owners within the area defined.  |
| <input type="checkbox"/>            | Areas represented by a legally established community association, may submit a resolution of the Board of Directors formally requesting a reforestation.   |
| <input type="checkbox"/>            | Individual property owners must submit a petition signed by a minimum of 60% of a maximum of 30 private property owners (up to 15 contiguous private properties on both sides of the street up to 500' in either direction from the location of the proposed reforestation site) as well as the endorsement of the appropriate homeowners' association, if applicable. |

\*A request for reforestation requires a written agreement submitted to the Parks, Beaches, and Recreation Commission by the petitioning sponsor (Individual private property owner(s) or group) to pay 100% of the costs of the removal and replacement of the public tree(s) in advance of any removal activity. The actual removal and replanting will be coordinated by the General Services Department using the City tree maintenance contractor.

CHECK # 5300 TO  
CITY OF NB enclosed \$406-

\*There shall be a minimum of a one-for-one replacement of all trees removed in reforestation projects. Replacement trees shall be a minimum size of 24" boxed trees and cost \$195 per tree, unless the parkway space will not accommodate a 24" boxed tree or a tree cannot be planted due to planting restrictions contained in City Council Policy G-6.

This form does not replace the requirements of any of the City tree policies. Its use is intended to expedite the tree removal or reforestation requests and to ensure compliance with all City requirements. Please refer to individual City Council Policy G-1 for additional information.

### Requestor Comments:

this reforestation removal/replacement is  
an "add-on" to the neighborhood reforestation project  
completed JANUARY 2009 in Broadmoor Hills.  
This request was initiated by a new resident and  
approved by the Board of Directors at the FEBRUARY 2009  
Board Meeting.

Removals, except emergency, will be subject to the notification processes, time frames and authority as specified in the City Council G-1 Policy.

POSTED ON  
COMMUNITY  
BULLETIN BOARD  
2/7 THRU 2/21

FEBRUARY 2009

**NOTIFICATION OF TREE REMOVAL/ REPLACEMENT  
AT 2706 LIGHTHOUSE LANE**

**IN CONJUNCTION WITH THE EARLIER CITY  
REFORESTATION PROGRAM IN BROADMOOR HILLS,  
ANOTHER HOMEOWNER HAS REQUESTED THAT THE  
FICUS RUBIGINOSA CITY TREE, LOCATED IN THE  
PARKWAY IN FRONT OF THEIR HOME, BE REMOVED  
AND REPLACED WITH A ST. MARY'S MAGNOLIA.**

**IF ANYONE HAS AN OBJECTION TO THIS BEING DONE,  
PLEASE NOTIFY GAIL FINNELL AT 644-2497.**

**NOTE:  
IF ANY HOMEOWNERS ARE INTERESTED IN  
PARTICIPATING IN THIS REFORESTATION PROGRAM  
OF REMOVING AND REPLACING THEIR PARKWAY  
TREE(S), PLEASE CONTACT GAIL FINNELL.  
THE ESTIMATED COST TO THE HOMEOWNER IS  
BETWEEN \$300 TO \$450, DEPENDING ON THE SIZE OF  
THE TREE BEING REMOVED.**

**BROADMOOR HILLS COMMUNITY ASSOCIATION**  
**BOARD OF DIRECTORS MEETING**  
**JANUARY 12, 2009**

10. REQUESTION -  
TREE REMOVAL/REPLACEMENT -  
2706 LIGHTHOUSE LN.

All pg. 2

**MINUTES**

**NOTICE OF MEETING:** Upon due notice, had and received, the Board of Directors of the Broadmoor Hills Community Association, a California non-profit Corporation, held its scheduled meeting on Monday, January 12, 2009, at the 2601 Blue Water Corona del Mar, CA 92625.

**CALLED TO ORDER:** The meeting was called to order by Board President, David Cassidy, at 4:05 p.m.

**DIRECTORS PRESENT:** David Cassidy, President  
Steve Strauss, Vice President/Treasurer  
Scott Daniels, Secretary  
Bob Broaddus, Member at Large  
Gail Finnell, Member At Large (arrived 5:15 p.m.)

**DIRECTORS ABSENT:** None

**ALSO ATTENDING:** Doris Felman  
Jeanne Brady, Villageway Management, Inc.

**HOMEOWNER COMMENTS:** Ms. Felman reported two violations. The Board referred her to Code Enforcement, City of Newport Beach regarding the complaints.

**MOTION TO ACCEPT AGENDA** Motion was made and seconded, accepting the agenda as published and posted; motion carried unanimously.

**APPROVAL OF MINUTES** Motion was made and seconded to approve the minutes of December 15, 2008; motion carried unanimously.

**ACTION ITEMS/RESPONSES** The action items/responses were accepted as submitted.

**VILLAGEWAY CONTRACT** The Board tabled further review and/or acceptance of the proposed management contract pending the addition of items at no charge to

the association as per previous negotiations.

FINANCIAL

Motion was made and seconded to approve the financial material for the period ending December 31, 2008 subject to audit; motion carried unanimously.

ANNUAL AUDIT

Motion was made and seconded to accept the proposal from Schonwit, \$1075.00; motion carried unanimously.

2009-2010 BUDGET

Motion was made and seconded, approving the proposed budget submitted by management; motion carried unanimously.

FACILITIES

The Board reviewed two proposals for repair of the service road. Management was directed to consult with So. Cal Builders for their opinion of the proposals and the best course of action.

LANDSCAPE

Gail Finnell reported on a possible water leak in an irrigation line. Discussion was held on the greenbelt trimming. The tree outside 2706 Lighthouse Lane is scheduled to be removed by the City. The Board unanimously approved the Landscape Report.

ARCHITECTURAL  
The Galloway Group  
review services

Motion was made and seconded, accepting the October 24, 2008 letter of agreement from the Galloway Group for architectural review services; motion carried unanimously.

Architectural Chair

Motion was made and seconded, appointing Steve Strauss as Architectural Chair; motion carried unanimously.

Holiday Décor

A reminder to remove holiday décor will be issued in the next issue of the Broadmoor Broadcast.

NEXT MEETING

Date and location to be determined.

Gail Finnell  
LANDSCAPE CHAIR



## General Services Department

### TREE INSPECTION REPORT

**Name:** Broadmoor Hills Community Association

**Contact:** Gail Finnell, Landscape Chair  
Villageway Management  
2601 Blue Water Drive  
Corona Del Mar, CA 92625

David Cassidy, President  
Broadmoor Hills Community Association

**Request:** The Broadmoor Hills Community Association and Board of Directors are requesting of the General Services Department staff, the removal and replacement of one City parkway tree located within the Broadmoor Hills community based on the criteria of City Council Policy G-1, Reforestation of City Trees.

**Tree Species/Sites:** Ficus rubiginosa – Rusty Leaf Fig

- 2706 Lighthouse Lane – 1 tree

**Designated Street Trees:** Magnolia grandiflora 'Little Gem' – Little Gem Magnolia

**Estimated Tree Value:** \$3,260.00

**Damage:** No apparent damage

**Parkway:**      **Concrete**                      **Brick**                      **Turf**                      **(X) Other**

**Comments:** A field inspection confirmed one healthy City tree within the Broadmoor Hills community.

The Association has indicated, the Ficus tree planted is the incorrect species for their community, and is requesting to replace with a suitable tree species (see attached tree removal application).

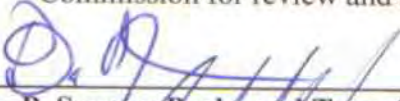
Estimated cost for reforestation of one City tree:

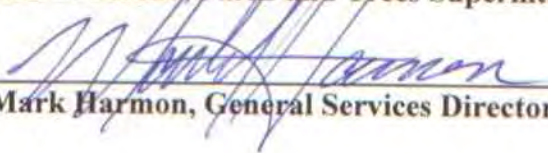
- Removal - \$ 195.00
- Replacement - \$ 211.00

**Total Cost - \$406.00**

**Inspected by:** John Conway                      **Date:** March 9, 2009  
John Conway, Urban Forester

**Recommendation:** Forward the reforestation request to the Parks, Beaches and Recreation Commission for review and approval.

Reviewed by:  \_\_\_\_\_ Date: March 9, 2009  
Dan P. Sereno, Parks and Trees Superintendent

Reviewed by:  \_\_\_\_\_ Date: 3/11/09  
Mark Harmon, General Services Director

### Inventory Detail

Dist: 6  
 Address: 2706 LIGHTHOUSE LN  
 Fictitious: No  
 Location: Front-1  
 On Address: 2706 LIGHTHOUSE LN  
 Species: *Ficus rubiginosa*, RUSTY LEAF FIG  
 DBH/Height: 13-18 / 15-30  
 Parkway Size: 5  
 Utility Overhead: No  
 Sidewalk Damage: No  
 Recommended Maintenance: Grid Trim  
 Estimated Value \$3,260



### WCA Work History

| Date       | Work Type               | Amount  | Job#  |
|------------|-------------------------|---------|-------|
| 4/1/2008   | Grid Pruning            | \$39.00 | 11060 |
| 10/27/2006 | Service Request Pruning | \$39.00 | 9765  |
| 5/9/2005   | Service Request Pruning | \$39.00 | 7334  |
| 4/17/2003  | Grid Trimming           | \$39.00 | 5737  |
| 9/2/2002   | Grid Trimming           | \$39.00 | 5154  |
| 12/4/2001  | Service Request         | \$39.00 | 4373  |
| 3/23/2001  | Service Request         | \$39.00 | 3874  |
| 8/16/2000  | Service Request         | \$39.00 | 3581  |

### Other Work History

| Date | Work Type | Crew | Acct# | Min |
|------|-----------|------|-------|-----|
|------|-----------|------|-------|-----|

General Services Director or designee concurs, then the applicant, the adjoining owners, private property owners on either side of the street within 500' in each direction of the tree location and a legally established community association, if applicable, shall be notified of the decision to remove or retain the tree within 30 days of the proposed removal. A legally established community association is responsible for notification of all association members pursuant to their established procedure. The General Services Director, or a designee, shall prepare a staff report for a regularly scheduled PB&R Commission meeting of all trees recommended for removal, except for those trees categorized in Paragraph C. (dead, diseased, or dying trees) or Paragraph E (claims and safety issues) in the preceding section on All Other City Trees. Only an applicant, an adjoining property owner, or a legally established community association, the City Manager, a PB&R Commissioner, or a Councilmember may appeal the decision of the General Services Director not to remove a tree to the Commission. The Commission, in considering any appeal, shall determine whether the removal meets the criteria outlined in this Policy, as well as any unique factors which may be pertinent to the removal or retention of tree(s). The decision of the Commission will be considered final unless called up by at least one Councilmember or the City Manager.

The General Services Department will delay any tree removal(s) for at least 14 calendar days following the date of the Commission decision in order to allow time for a Councilmember or the City Manager to call the item.

The City will replace all trees removed in accordance with the All Other City Trees removal criteria on a one for one basis. Replacement trees will be a minimum of a 36" boxed size. If 36" boxed trees are not available, or funding, or space constraints prevent planting of a large tree, then a minimum of a 24" boxed tree will be planted. The full costs of removal and replacement of Special or All Other Tree(s) will be the sole responsibility of the City, unless an applicant voluntarily pays for a new tree(s).

#### REFORESTATION OF CITY TREES

The concept of systematically replacing Problem or All Other Trees which are creating hardscape and/or view problems and cannot be properly trimmed, pruned or modified to alleviate the problem(s) they create, or those which have reached their full life, and are declining in health, or are simply the wrong species of trees for the planted location is referred to as reforestation. The Urban Forester shall make a finding for the latter category of inappropriate tree species for a specific location. His determination may be appealed to the General Services Director whose decision will be final.

It is recognized and acknowledged that City trees were planted many years ago and in some cases were planted with specific species that when fully mature cause damage to curb, gutter, sidewalk or underground utilities. Within the geographical boundaries of certain view neighborhoods, City street trees may encroach into blue water views from public and private property depending on the length of time since the trees were last trimmed, or the age and height of the trees. In other cases, the wrong species of tree was planted originally and simply does not conform to the current treescape or represents a safety hazard.

Arborists continue to develop lists of tree species which will grow in restricted parkway areas without causing significant damage to curb, gutter, sidewalk, utilities or loss of views. The City Street Tree Designation List, which specifies a species for each City street reflects an effort by the City to prescribe appropriate tree species that will not cause future problems.

As a City which understands the importance of trees and the beauty they bring to a community, the City desires to continually improve the urban forest through reforestation. In areas where City trees have been removed through City initiation, the City will endeavor to replace the trees with the appropriate designated City tree.

Individual private property owners, as well as legally established community associations, may apply for single or multiple tree reforestations in their respective area by submitting a request to the General Services Director for consideration by the Commission that meets the following requirements:

- A. The proposed area must have clearly defined contiguous geographical boundaries that include the tree(s) proposed for removal and replacement, street address(es), block number(s), or other geographical information. This section applies to individual and group requests.
- B. Residential communities, neighborhoods, or business organizations who apply for reforestation must submit a petition signed by a minimum of 60% of the property owners within the area defined for reforestation. The petition content must be approved and dated by City staff prior to distribution by the petitioner. The staff-approved petition must be distributed by the petitioner to a maximum of 30 private property owners (up to 15 contiguous private property owners on both sides of the street up to 500' in either direction from the location of the proposed reforestation). Signatures by non-property owners are not acceptable for petition purposes. All petition signatures shall be verified by City staff for

property owner status of the person(s) signing the petition. As an alternative to the above requirements, areas represented by a legally established community association, may submit a resolution of the Board of Directors formally requesting a reforestation with a statement that all members of the community association having their residential views affected, have been officially notified and given an appropriate opportunity to respond before the Board voted on the request. Individual private property owners living within a legally established community association area with mandatory association membership must petition for reforestation through their respective association.

- C. Individual private property owners not residing within a legally established community association area may submit individual requests for single or multiple tree reforestations. The applicant must submit a petition signed by a minimum of 60% of a maximum of 30 private property owners (up to 15 contiguous private properties on both sides of the street up to 500' in either direction from the location of the proposed reforestation site) as well as the endorsement of the appropriate homeowners' association, if applicable. The petition content must be approved and dated by staff prior to distribution. All petition signatures shall be verified by City staff for private property owner status of the person(s) signing the petition.
- D. A written agreement must be submitted to the Parks, Beaches, and Recreation Commission by the petitioning sponsor (individual private property owner(s) or group) to pay 100% of the costs of the removal and replacement of the public tree(s) in advance of any removal activity. The actual removal and replanting will be coordinated by the General Services Department. The total costs shall include only the contractor's removal and replacement costs and be paid in advance of any removal actions.
- E. The replacement tree(s) for reforestation shall be the Designated Street Tree(s) as prescribed by City Council Policy G-6, or the organization must request and obtain approval from the Commission of the designation of a different tree species prior to submitting any reforestation request for a tree species other than the designated street tree. This section applies to individual or group requests.
- F. There shall be a minimum of a one-for-one replacement of all trees removed in reforestation projects. Replacement trees shall be a minimum size of 24" boxed trees, unless the parkway space will not accommodate a 24" boxed tree or a tree cannot be planted due to planting restrictions contained in Council Policy G-6. If

there is not room for the replacement tree(s) at a specific site as prescribed by City Council Policy G-6, then the replacement tree(s) shall be planted in a public area in the same neighborhood at the option of the petitioner. This section applies to individual or group requests.

- G. Reforestation requests must be completed and submitted in a timely manner by the petitioner. Petitions that are dated more than 90 days in arrears from date stamped by staff before distribution will not be forwarded to the PB&R Commission for consideration.

The decision of the Commission on reforestation requests will be considered final unless called up by at least one Councilmember or the City Manager.

#### TREE MAINTENANCE

The City shall require the proper care and watering of replacement trees by the reforestation petitioner to ensure their proper growth and development as outlined in City Council Policy G-6. Furthermore, no person shall tamper with City trees in violation of Section 13.08.040 of the Municipal Code. Further, the City will endeavor to fund the care of the Urban Forest to the highest level possible through the efficient use of regular tree trimming, root pruning, root barrier and pesticide programs.

#### ENCROACHMENT AND DEMOLITION PERMITS

All encroachment permits (permits for private property development which are proposed to encroach upon the City right of way) or demolition permits that involve the removal or replacement of City tree(s) must be specifically noticed by the property owner to City staff prior to the building and/or demolition permit process whenever possible. The proposed construction plans must indicate preservation of existing City trees wherever possible (exempt: dead, dying, or in an advanced state of decline). If the proposed development, as deemed by the General Services Director, requires the removal of City trees, the property owner must submit a tree removal request to the General Services Director, shall pay all related tree removal and replacement costs (one for one replacement) and meet all provisions of Council Policies L-2 and L-6 and City Ordinances 13.08 and 13.09. Approval or disapproval of all tree removal/replacement requests associated with encroachment and demolition permits will be the responsibility of the General Services Director or a designee.



02/26/2009

2706 Lighthouse Lane

- Selected Features
- City Boundary
- Trees
- Vacant Tree Site





## General Services Department

---

PB&R Commission Agenda

Item No. 7

April 7, 2009

**TO:** Parks, Beaches and Recreation Commission

**FROM:** General Services Director

**SUBJECT:** *Appeal for Tree Removal Denied at 501 ½ Narcissus Avenue*

### Recommendation

To deny the appeal for removal of one City Melaleuca quinquenervia (Cajeput) parkway street tree located at 501 ½ Narcissus Avenue.

### Discussion

On January 27, 2009, the City's Urban Forester inspected the City Cajeput tree, at the request of the property owner due to repeated sewer lateral obstruction and public/private property damage caused from tree roots.

Staff inspected and concluded that the Cajeput tree located in the adjacent parkway did not meet the criteria for removal as stated in City Council Policy G-1, Retention or Removal of City Trees. The policy requires, "a repeated history of damaging public or private sewers", and is "dead, diseased, dying, or hazardous, and presents a liability to the City", in order for a City tree to be eligible for removal. This finding was forwarded for review to the General Services Director, Risk Manager, and City Manager, all who concurred with the determination.

Ms. Barbara Edwards is requesting an appeal before the Parks, Beaches and Recreation Commission.

Ms. Edwards and Council Member Nancy Gardner have received a copy of this report and a notice of the Commission meeting.

Submitted by:



Mark Harmon

Attachments:

- (A) Letter of Denial dated February 13, 2009 from the General Services Director
- (B) Tree Removal Request Report dated January 27, 2009



# CITY OF NEWPORT BEACH

## GENERAL SERVICES DEPARTMENT

Mark Harmon, Director

February 13, 2009

**COPY**

Ms. Barbara Edwards  
501 ½ Narcissus Avenue  
Corona Del Mar, CA 92625

Dear Ms. Edwards,

On January 27, 2009, the City's Urban Forester inspected a City Cajeput tree adjacent to 501 ½ Narcissus Avenue, and found the tree does not meet the criteria for removal as stated in the City Council Policy G-1, Retention or Removal of City Trees.

Specifically, your removal request did not meet the requirements listed under the removal criteria of Council Policy G-1, All Other City Trees, Page 4, Items A & C (see attached). According to these sections of the policy, tree(s) must have a, "repeated history of damaging public or private sewers, sidewalks, curbs, from tree roots and causes significant documented private property damage (greater than \$500)", and is "dead, diseased, dying, or hazardous, and presents a liability to the City," in order to be eligible for removal.

If you oppose this determination, you may appeal the decision to the Parks, Beaches, and Recreation Commission for further review.

It is important to emphasize that under no circumstances are City trees to be removed without City authorization. If an unauthorized tree removal should occur, the City will review all its enforcement options, including criminal prosecution and civil restitution for the value of the trees removed, which may be up to three times their value.

Please contact John Conway, Urban Forester at (949) 644-3083 or email at [jconway@city.newport-beach.ca.us](mailto:jconway@city.newport-beach.ca.us) if you have any questions or for further direction regarding the appeal process or reforestation request.

Sincerely,

Mark Harmon, Director  
General Services Department

Attachment: (A) City Council Policy G-1, Retention or Removal of City Trees



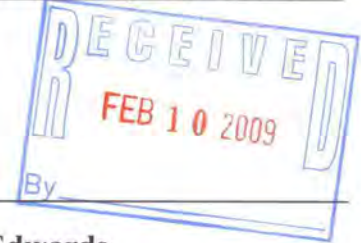
# General Services Department

Date: January 27, 2009

**TO:** General Services Director

**FROM:** Parks and Trees Superintendent and Urban Forester

**SUBJECT:** *Tree Removal Request*



PROPERTY OWNER(S) INFORMATION: Name: **Barbara Edwards**  
 Tree Location: **501 1/2 Narcissus Avenue**  
**Corona Del Mar, CA 92625**

The property owner is requesting the removal of a City Cajeput tree due to alleged repeated history of public/private property damage. However, the tree does not pose a potential hazard or liability, and there is insufficient evidence of repeated work history based on Policy G-1.

Staff recommends denying the removal of the City tree.

REPLACEMENT TREE: YES  NO

DESIGNATED TREE: N/A

GENERAL SERVICES DIRECTOR'S COMMENTS/RECOMMENDATIONS:

*APPROVE STAFF RECOMMENDATION*

Signature: *[Signature]*

Date: *2/9/09*

The attached documents are for your review and comment(s). Sign, date, and route accordingly.

RISK MANAGER'S COMMENTS/RECOMMENDATIONS:

*Risk Mgmt. concurs.*

Signature: *[Signature]*

Date: *2/11/09*

FINAL ACTION TO BE TAKEN:

- Low Priority
- Moderate Priority
- High Priority – Forward memo directly to City Manager for immediate removal authority
- Emergency – Forward memo immediately to General Services Director

Conclusion: \_\_\_\_\_

REMOVAL:  Approved  Disapproved

Signature: *[Signature]*  
 Title: **City Manager**

Date: *2/11/09*  
 Date: \_\_\_\_\_

Attachments



# General Services Department

## TREE INSPECTION REPORT

**Name:** Barbara Edwards  
**Address:** 501 ½ Narcissus Avenue, Corona Del Mar

**Tree Sites:** Side-1 / Second Avenue

**Request:** The property owner is requesting the removal of a City Cajeput tree due to alleged repeated history of public/private property.

**Botanical Name:** Melaleuca quinquenervia  
**Common Name:** Cajeput Tree  
**Designated Street Tree:** N/A  
**Estimated Tree Value:** \$17,220.00

**Damage:** Alleged damage caused by City tree roots (see attached tree removal application).

**Work History:** The Field Maintenance Division recorded the following work history:

- Sidewalk repairs – July 1997
- Sidewalk repairs – Pending repairs scheduled in the 2008-09 Sidewalk contract

**Parkway:** (X) Concrete    Brick    Turf    Other

**Comments:** A field inspection confirmed a healthy tree specimen. Although the tree was root pruned to accommodate City hardscape repairs, a recent inspection of the tree confirmed the tree has a sufficient root system to keep it stable. There is no evidence of a potential hazard or liability, and insufficient evidence of repeated work history based on Policy G-1. The tree should be retained.

**Inspected by:** John Conway **Date:** January 27, 2009  
John Conway, Urban Forester

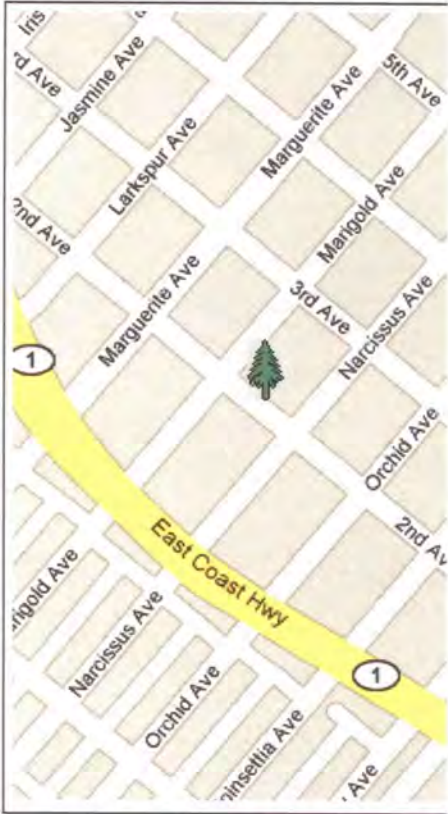
**Recommendation:** Deny removal of the City Cajeput tree.

**Reviewed by:** Dan P. Sereno **Date:** January 27, 2009  
Dan P. Sereno, Parks and Trees Superintendent

**Reviewed by:** Mark Harmon **Date:** 2/9/09  
Mark Harmon, General Services Director

### Inventory Detail

Dist: 12  
 Address: 501 NARCISSUS AV  
 Fictitious: Yes  
 Location: Side-1  
 On Address: 3420 SECOND AV  
 Species: *Melaleuca quinquenervia*, CAJEPUT TREE  
 DBH/Height: 31+ / 30-45  
 Parkway Size: 99  
 Utility Overhead: No  
 Sidewalk Damage: No  
 Recommended Maintenance: Grid Trim  
 Estimated Value \$17,220



### WCA Work History

| Date       | Work Type       | Amount  | Job#  |
|------------|-----------------|---------|-------|
| 8/20/2007  | Grid Pruning    | \$39.00 | 11060 |
| 12/9/2004  | Grid Pruning    | \$39.00 | 7334  |
| 12/31/2002 | Grid Trimming   | \$39.00 | 5154  |
| 12/11/2001 | Service Request | \$39.00 | 4184  |
| 1/31/2001  | Grid Trimming   | \$39.00 | 3581  |
| 7/22/1999  | Grid Trimming   | \$39.00 | 2866  |

### Other Work History

| Date | Work Type | Crew | Acct# | Min |
|------|-----------|------|-------|-----|
|------|-----------|------|-------|-----|



02/05/2009



# CITY OF NEWPORT BEACH General Services Department

## Tree Removal or ~~Reforestation~~ Application

Per City Council Policy G-1 (Retention or Removal of City Trees), I am requesting a tree removal(s) to be reviewed by staff and submitted to either the Parks, Beaches, and Recreation Commission for consideration at a future meeting or the appropriate City approving authority. Commission meetings are held on the first Tuesday of each month (expect for holidays) at 7PM at the Council Chambers.

ONE (1) MELALEUCA

Indicate the number and specie(s), (if known) of tree(s).

Located at: 501 1/2 NARCISSUS, CORONA DEL MAR

Please be as specific as possible

### Requestor

- Property Owner
- Community Association
- Other \_\_\_\_\_

### Address/ Phone (Daytime) / Email

SAME ADDRESS (949) 500 6627  
BKEDS @ EARTHLINK . NET

Signature: Barbara Edwards

Date: 1/15/09

Print Name: BARBARA EDWARDS

If this is a reforestation request proceed to the reverse side of this form

### Section A. For Tree Removal Requests Only

#### Removal Criteria (Check one or more)

Please provide copies of photos, bills, documents or any other related material that will verify the checked items.

- Proven and repeated history of **damaging** public or \*private, sewers, water mains, roadways, sidewalks, curbs, walls, fences, underground utilities or foundations.

(\*Greater than \$500)

- Repeated history of **significant interference** with street or sidewalk drainage.

**Dying** Has no prospect of recovery.

**Diseased** Cannot be cured by current arboricultural methods.  
In advanced state of decline with no prospect of recovery.

**Hazardous** Defective, potential to fail, could cause damage to persons/property upon failure. Assessment by Urban Forester will identify structural defects, parts likely to fail, targets-if fails, procedures and actions to abate.

**Beautification Project** In conjunction with a City Council-approved City, commercial, neighborhood, or community association beautification program.

John: I have today received the letter from Dan Sereno, Parks and Trees Superintendent and the form letter from Mark Harmon, Director of General Services regarding my request for tree removal.

Part of their requirement is for 11 property owners signatures in favor of tree removal and I assume the red outlined map enclosed indicates these signatures will be acceptable only from those property owners. Is that correct? I am also assuming that the computer printout sent indicates the owners? Is that correct? I am also assuming that no signatures are necessary except in the case of reforestation. Is that correct? You already hold signatures from some of the property owners and they were upset to know that the City prefers continuing to spend their tax dollars to redo the curbing (already done once and ready to be redone again) pushed out by the designated tree. Not to mention that root pruning will be required for the second time at my property as you can see the roots next to my foundation and probably under it. As you know, the tree has pushed up three feet already along the curbing and continues to push up so it should be of some concern to the City that with severe root pruning (which it will require) on one side and pushing upwards against the curbing on the other, there may be very little stability to that tree in the future.

It is interesting that the cost to replace the tree ranges from \$395 to \$595 for the property owner and/or the City, yet the City prefers to pay out tax payers' money in tree root pruning and curb replacement for the second time. And there will be a third and fourth you can be sure probably about every five years.

Even if I were considering reforestation, which I am not, apparently I would have no say in the tree replacement, even if I had to pay for it. I certainly would not want another eucalyptus. As you and I have discussed, I already paid once for a replacement tree and the City put in this Melaleuca unbeknownst to me (I had requested another type of tree). There are many properties here in CDM without a tree in front of them and I see no reason why my property could not be one of them.

Under the PROBLEM TREE section of the G-1 guidelines A "The City tree has had a repeated history of damaging public or private.....curbs or foundations based on City records. You will have two such records now and there will be more because your office insists on having this tree remain.

Also under that Section of G-1 ".....sewer stoppage that results from tree roots and causes documented private property damage ...." As you and the City are aware, my property sustained \$1,200 sewer stoppage and backup last September. You personally saw the tape recording showing the blockage was in the City area in the alley. Roots, though small, had managed to enter the City's pipe at the joint and caused an eventual blockage of material from the property. Those roots may have been from the City Melaleuca which was the closest tree to the sewer line and is another reason to have the Melaleuca taken out.

John, I am sending this to your email and would appreciate your printing it out and handing a copy to each of the above in answer to their letters. As I do not intend reforestation, and the City refuses to remove the tree despite ongoing damage to property and cost to tax payers, I will complete the Tree Removal Application and forward to your attention immediately.

Barbara Edwards



Barbara Edwards  
501 1/2 Narcissus Ave  
Corona Del Mar, CA 92625-2434

REUTER'S GENERAL CONTRACTING  
 1677 SUPERIOR AVENUE, SUITE G  
 COSTA MESA, CA 92627

# INVOICE

|           |         |
|-----------|---------|
| DATE      | INVOICE |
| 11/6/2008 | 10366   |

|   |
|---|
| BILL TO:  |
| Barbara Edwards<br>501 1/2 Narcissus Avenuc<br>Corona del Mar, CA 92625 |

| ITEM              | DESCRIPTION   | REFERENCE  | QTY   | RATE     | AMOUNT   |
|-------------------|---|--|-------|----------|----------|
| 610-577 Plumb...  | Plumbing Labor  | DC Drains  | 1     | 1,510.00 | 1,510.00 |
| 550-548 Cabinets  | Cabinets (NEW-OLD CABINETS<br>DAMAGED BY SEWER WATER) | Tucker Woodworking   | 0.5   | 9,400.00 | 4,700.00 |
|                   | Reimbursable Expenses Subtotal                        |  |       |          | 6,210.00 |
| 620-585 Insura... | General Liability Insurance                           |  | 6,210 | 0.0075   | 46.58    |
| 620-599 Gen C...  | General Contractor Fee                                |  | 6,210 | 0.15     | 931.50   |
|                   |   | $\begin{array}{r} 1510 \\ -310 \text{ NOT SEWER WORK} \\ \hline 1200 \text{ PLUMBING LABOR IN CONNECTION W/SEWER} \end{array}$ |       |          |          |

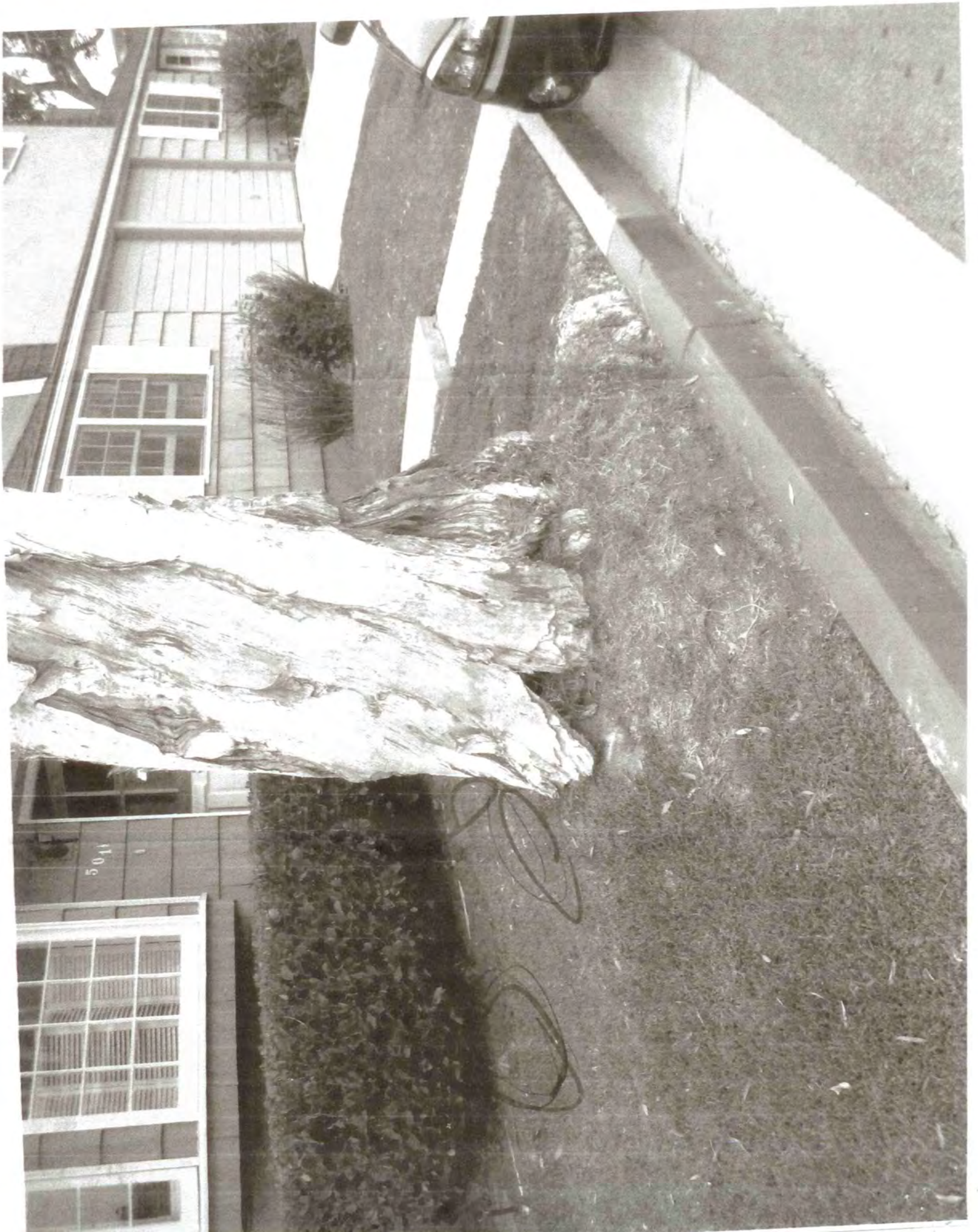
We appreciate your business!

**Total - Due upon Receipt**

\$7,188.08

PMD 11/11

|              |              |                       |                     |
|--------------|--------------|-----------------------|---------------------|
| Office       | Fax          | E-mail                | Web Site            |
| 949-645-5824 | 949-645-2881 | anita@reuterhomes.com | www.reuterhomes.com |





TAKEN 6/08 - MUCH WORSE 1/09

