



# **NEWPORT BEACH**

## **PARKING PLAN**

**Presented by Brian Canepa**

**February 21, 2012**

# Agenda

---

- Presentation of Strategies
- Direction from CAP



# PARKING STRATEGIES

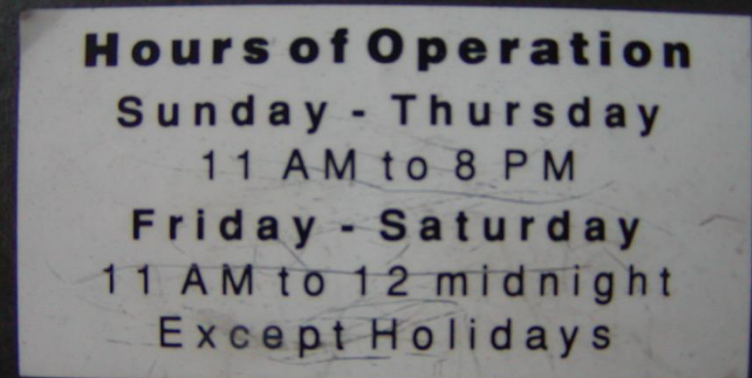
# Demand Responsive Pricing

- On-street
  - Hours of operation:
    - Summer: 8 AM – 8 PM, 7 days
    - Non-Summer: 8 AM – 6 PM, 7 days
  - No time limits
  - Peak (Summer)
    - \$2.00 per hour (0-2 hours)
    - \$2.50 per hours (2+ hours)
  - Off-peak (non-summer)
    - \$1.00 per hour (0-2 hours)
    - \$1.50 per hours (2+ hours)
- Off-street
  - Peak (Summer)
    - \$1.50 per hour (no max)
  - Off-peak (non-summer)
    - \$.50 per hour (no max)



# Parking Benefit District

- Use revenues generated within the PBD to fund improvements
- Create governing / oversight body
  - Business Improvement District (BID)
  - New private advisory board
  - Volunteer advisory board
  - Non-profit community development corporation
- Potential PBD Expenditures:
  - Purchase, installation costs of meters
  - “Mobility Ambassadors”
  - Landscaping and streetscape greening
  - Street cleaning, power-washing of sidewalks, and graffiti removal
  - Transit, pedestrian, and bicycle infrastructure and amenities



# Residential Parking Permits

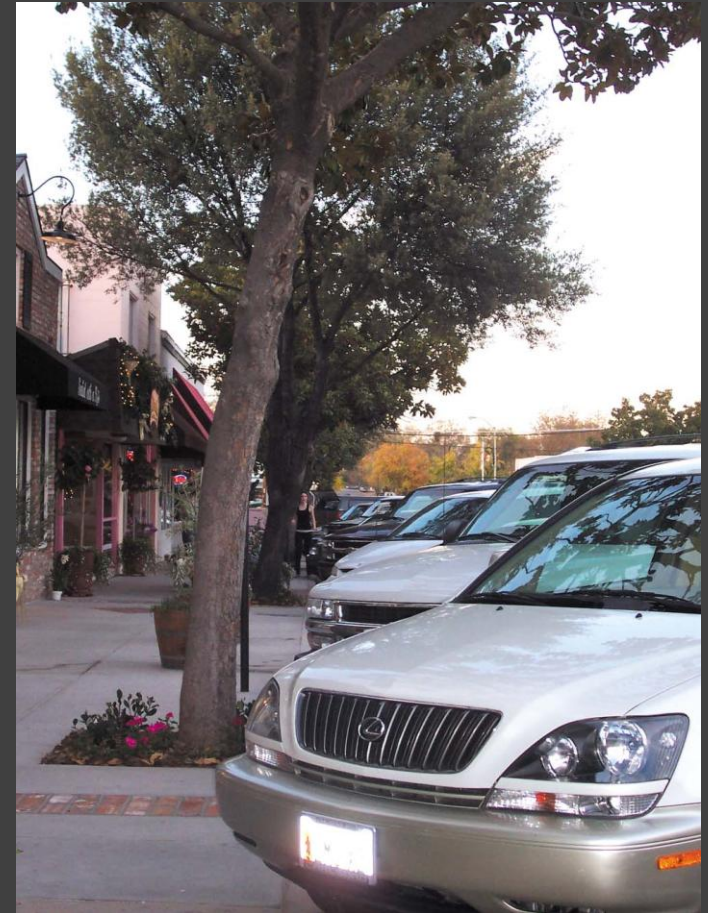
- 7<sup>th</sup> to Adams boundary
- 4 PM – 9 AM, M-Su (excluding holidays)
- Max 4 permits/household
- Solid color rearview mirror “hangtag”
- 1<sup>st</sup> permit: \$20 per year; 2<sup>nd</sup> permit: \$40 per year; 3<sup>rd</sup> permit: \$60 per year, 4<sup>th</sup> permit: \$100 per year
- Eligible:
  - All residences within the proposed zone, including rental home owners
- Non-eligible:
  - Bay Island residents and city residents living on boats and storing their vehicles in the 7th to Adams District



# Employee Permits

---

- Designated zone: 100 spaces in Balboa Village Municipal Beach parking lot
- 6 AM – 10 AM, weekdays
- Permit Cost: \$50 per year, no proration
  - Permits renewed annually
  - Purchased on-line or in-person
- Revenue used to cover cost of program administration
- Eligibility: All employers and employees within Balboa Village



# Minimum Parking Requirements & Fees

- Option 1: No min reqs + no fees
  - Reduces development costs
  - No additional revenue stream
- Option 2: No min reqs + impact fee
  - Provides revenue to mitigate impacts
  - Adds second fee (traffic impact fee)
  - Requires nexus study
- Option 3: Low min reqs + in-lieu fee
  - Provides revenue to mitigate impacts
  - Necessitates minimum parking requirements, which may result in small, fragmented lots
  - Fee study desirable





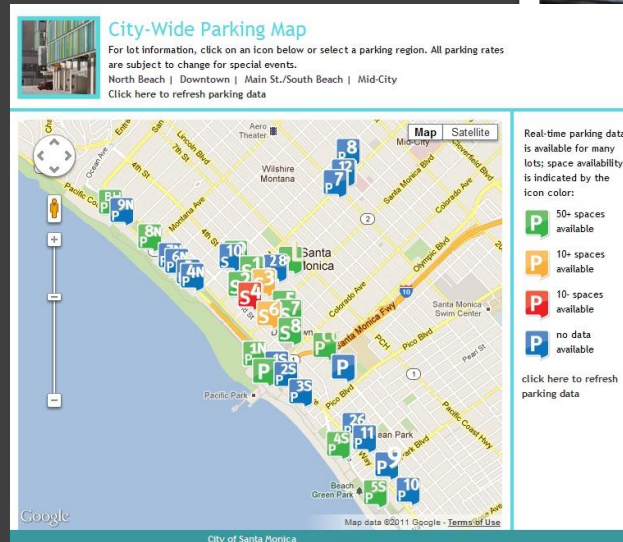
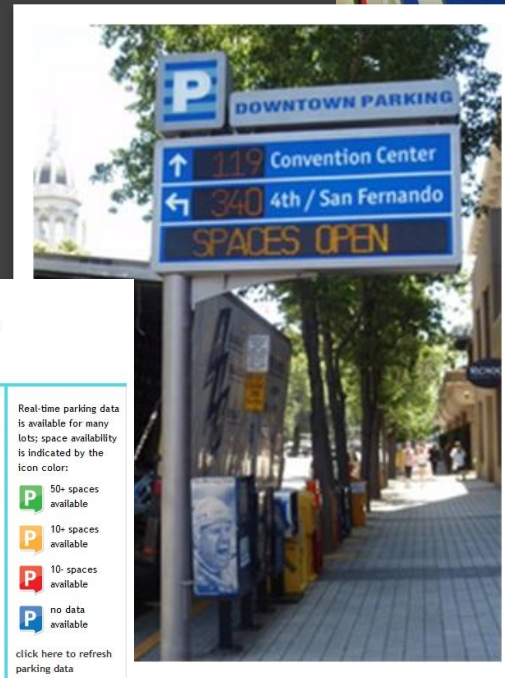
# Shared Parking District

- Encourage existing private parking be publicly available when not needed
- Set operating and liability arrangements
- Mandate new development or change of use parking be publicly available
- Allow shared parking within a single mixed-use building by right
- Purchase or lease existing private parking before building new public parking



# Wayfinding & Real-Time Information

- Wayfinding programs
  - Improved signage
- Real-time information
  - Online (cheap)
  - Physical signs (expensive)



# Bicycle & Pedestrian Improvements

- Augment Bicycle Safety Committee's work
- Improving or installing sidewalks, crosswalks, paths, and bike lanes
- Traffic calming - bulbouts, raised intersections, or speed humps
- Bicycle parking facilities or programs
- Shower and changing facilities
- Bicycle sharing programs
- Publicity campaigns, bike to school/bike to work programs, and educational/safety efforts



# On-Going Data Collection & Monitoring

- Collect occupancy data for on- and off-street parking facilities and turnover data for on-street spaces
- Methods of data collection
  - Manual counts conducted by trained surveyors
  - Automatic data provided by parking meters
- Frequency of data collection
  - At a minimum, on an annual basis
  - Ideally, biannually during both summer and off-peak time
- Adjust meter rates and hours accordingly



# Questions?





Brian Canepa  
116 New Montgomery Street, Suite 500  
San Francisco, CA 94105  
415.284.1544  
[bcanepa@nelsonnygaard.com](mailto:bcanepa@nelsonnygaard.com)