

Marina Park



Stakeholders Update

June 5, 2012

Rabben/Herman
design office

Bundy Finkel Architects

Moffat & Nichol

Fusco

Agenda

- Overall Park Plan Review and Update
- Project Schedule Review





**Since we last presented
to you on March 21, 2010**

**State Lands
Commission
approval was
received.**



Coastal Commission revised application
submitted and letter of Staff
Recommended Approval w/conditions
received on 06/01/2012



Coastal Commission Hearing to be held June 13, 2012

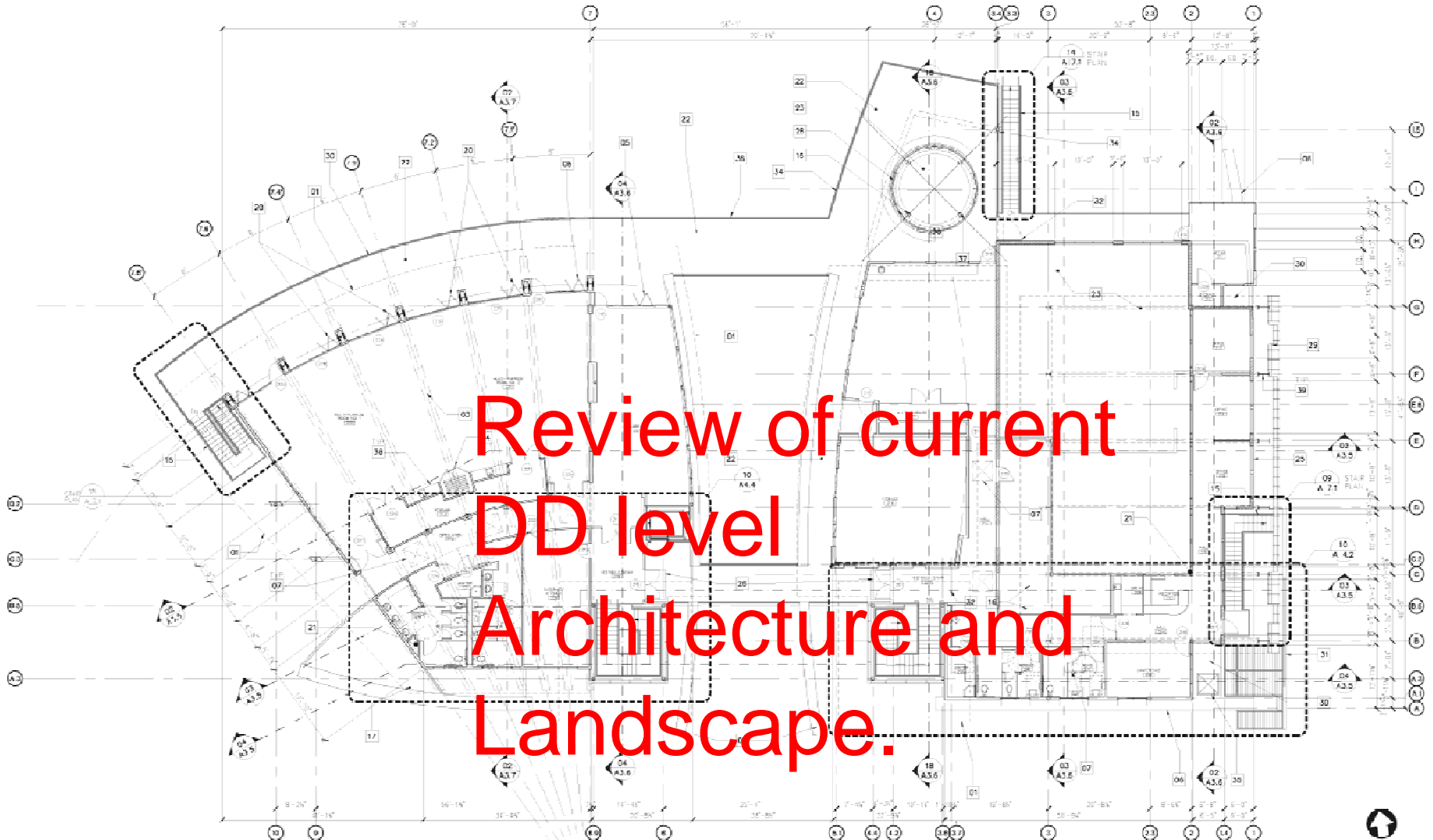
- THIS **RESOLVES THE BIGGEST HURDLE** to the project going forward.

**Started Design Development
plans for all facilities this past April**





Intention is to have
plans ready for Bidding
when final CCC permits
are received



Review of current
DD level
Architecture and
Landscape.

SECOND FLOOR PLAN

WALL TYPE	SEE	KEYNOTE
01	SEE	01
02	SEE	02
03	SEE	03
04	SEE	04
05	SEE	05
06	SEE	06
07	SEE	07
08	SEE	08
09	SEE	09
10	SEE	10
11	SEE	11
12	SEE	12
13	SEE	13
14	SEE	14
15	SEE	15
16	SEE	16
17	SEE	17

MATERIALS	NO.	DESCRIPTION	NO.	DESCRIPTION
01	---	EDGE OF OVERHEAD OR ROOF ABOVE	18	---
02	---	LANDSCAPE AREA - SEE LANDSCAPE PLAN	19	---
03	---	MOVABLE PARTITION	20	---
04	---	MOVABLE PARTITION SYSTEM MODEL AND LOOP	21	---
05	---	GLASS PARTITION SYSTEM	22	---
06	---	GLASS PARTITION SYSTEM	23	---
07	---	GLASS PARTITION SYSTEM	24	---
08	---	GLASS PARTITION SYSTEM	25	---
09	---	GLASS PARTITION SYSTEM	26	---
10	---	GLASS PARTITION SYSTEM	27	---
11	---	GLASS PARTITION SYSTEM	28	---
12	---	GLASS PARTITION SYSTEM	29	---
13	---	GLASS PARTITION SYSTEM	30	---
14	---	GLASS PARTITION SYSTEM	31	---
15	---	GLASS PARTITION SYSTEM	32	---
16	---	GLASS PARTITION SYSTEM	33	---
17	---	GLASS PARTITION SYSTEM	34	---

PROVIDE	NO.	DESCRIPTION	NO.	DESCRIPTION
01	---	---	1	---
02	---	---	2	---
03	---	---	3	---
04	---	---	4	---
05	---	---	5	---
06	---	---	6	---
07	---	---	7	---
08	---	---	8	---
09	---	---	9	---
10	---	---	10	---
11	---	---	11	---
12	---	---	12	---
13	---	---	13	---
14	---	---	14	---
15	---	---	15	---
16	---	---	16	---
17	---	---	17	---

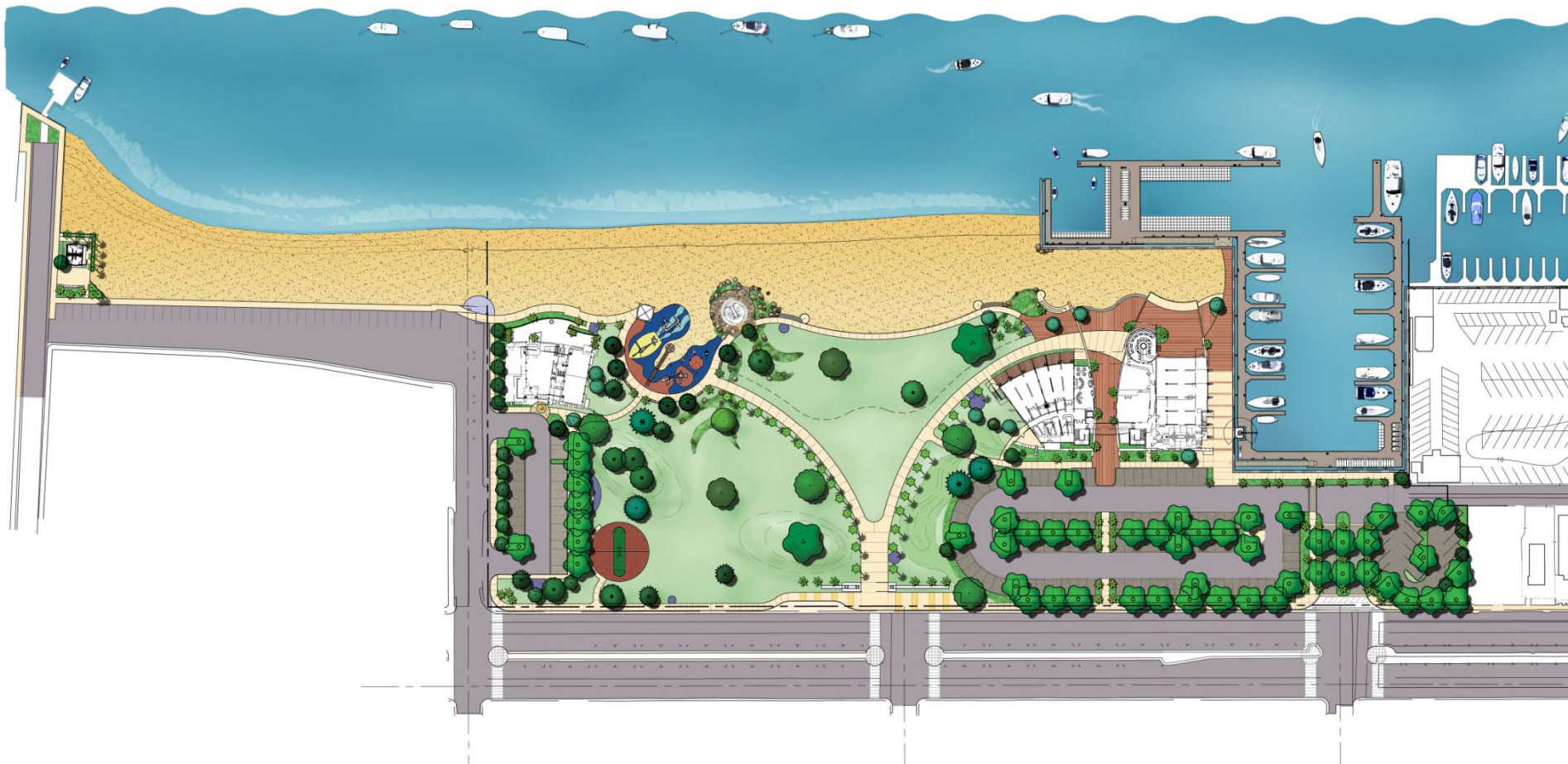
KEYNOTES

WALL TYPES

REFERENCE PLAN



Site Plan





VIEW FROM SOUTH











VIEW FROM NORTH







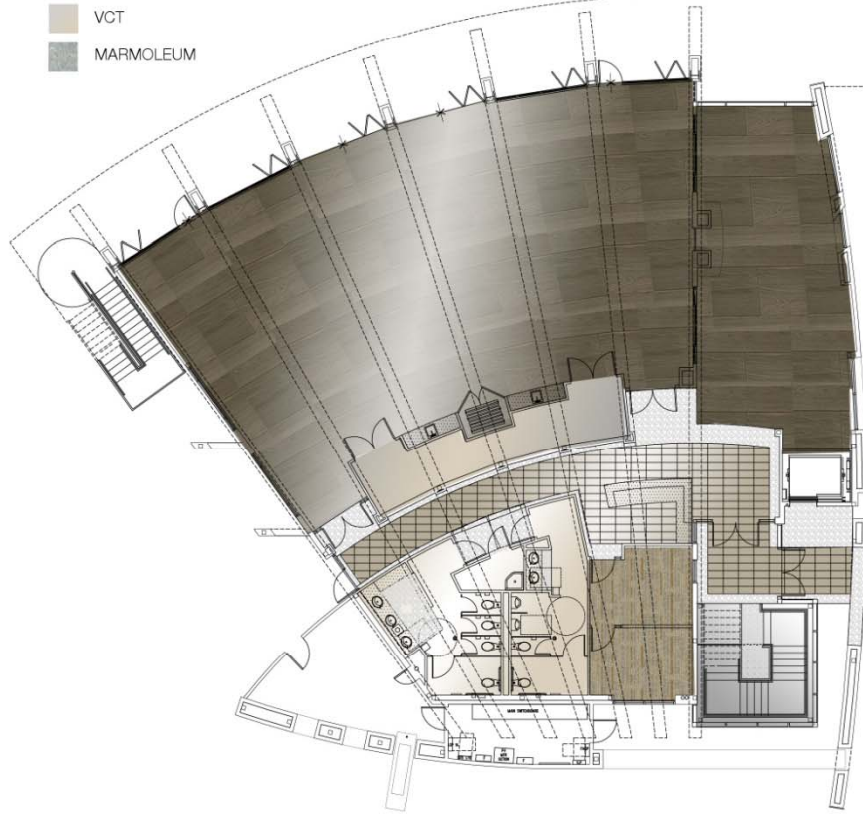
VIEW FROM NORTHEAST



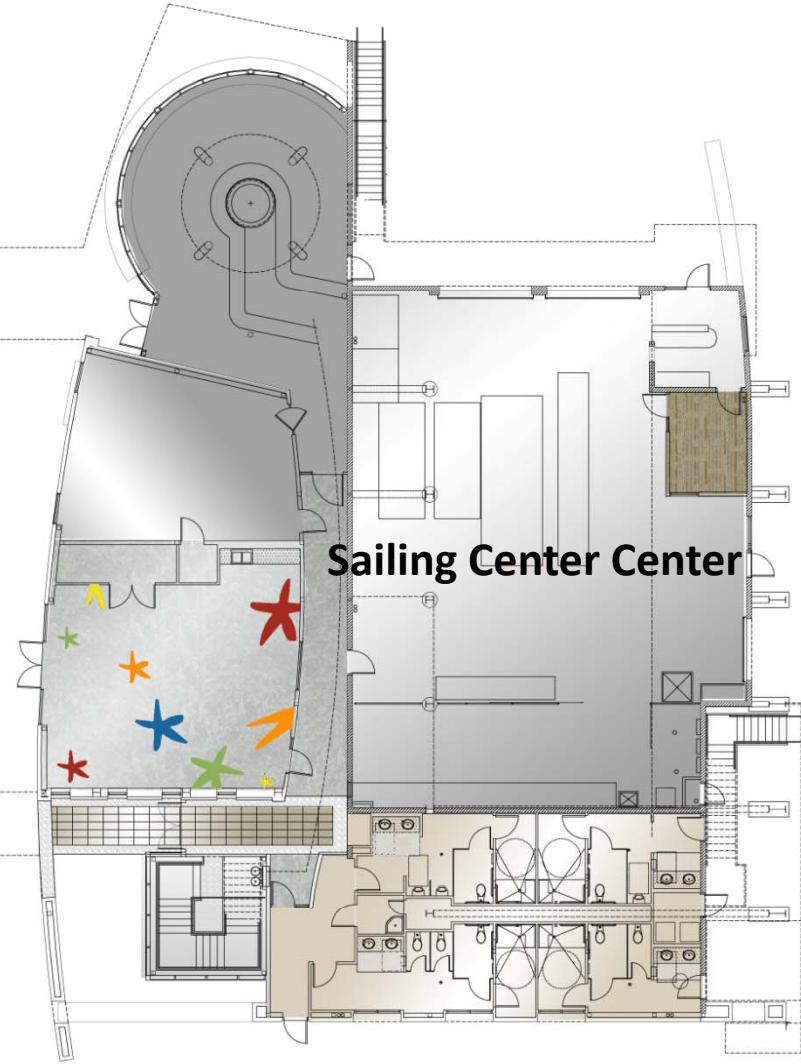
LEGEND

-  CARPET
-  WOOD VINYL PLANKS
-  TILE
-  CONCRETE
-  PEBBLES
-  VCT
-  MARMOLEUM

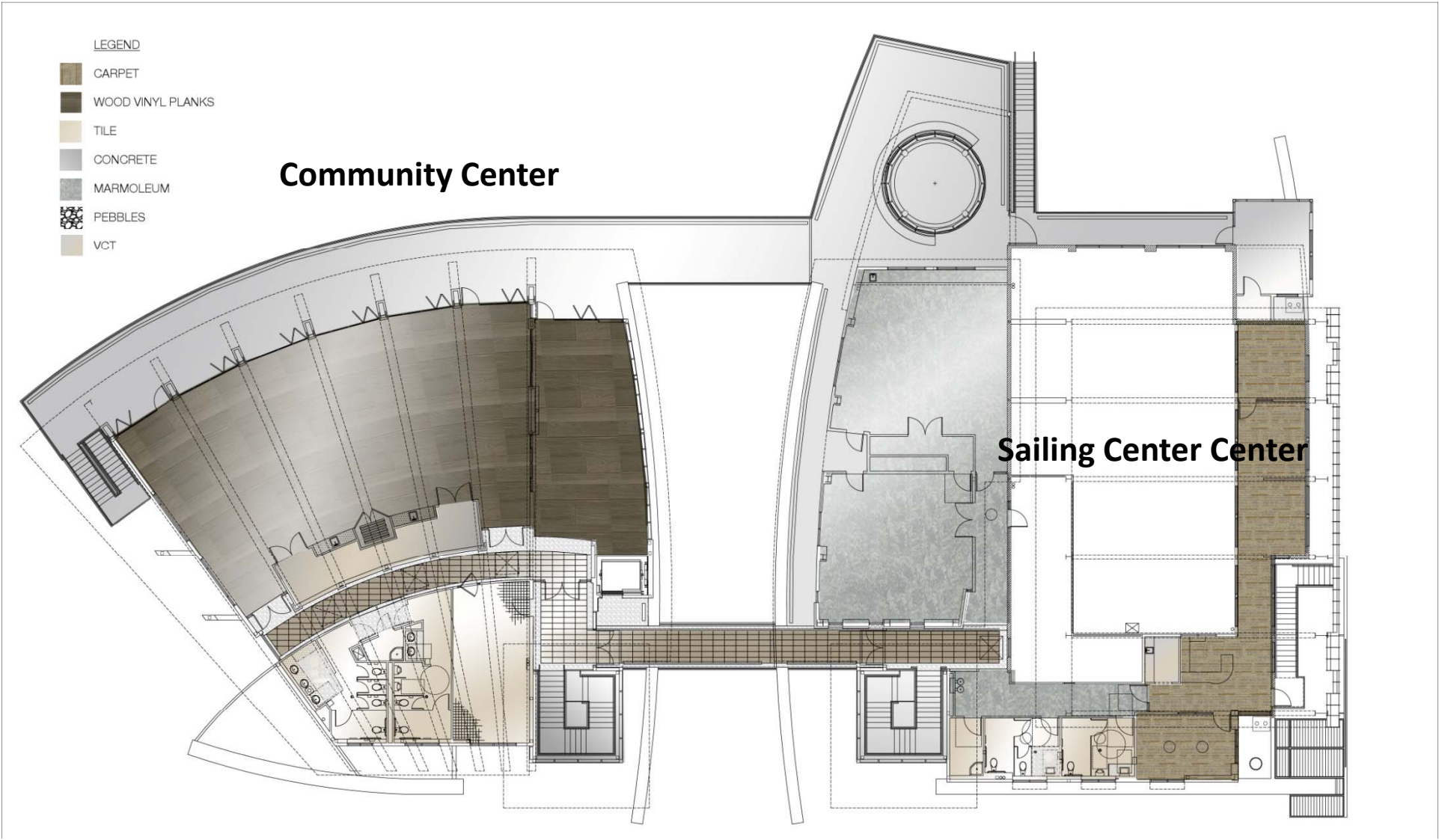
Community Center



Sailing Center Center



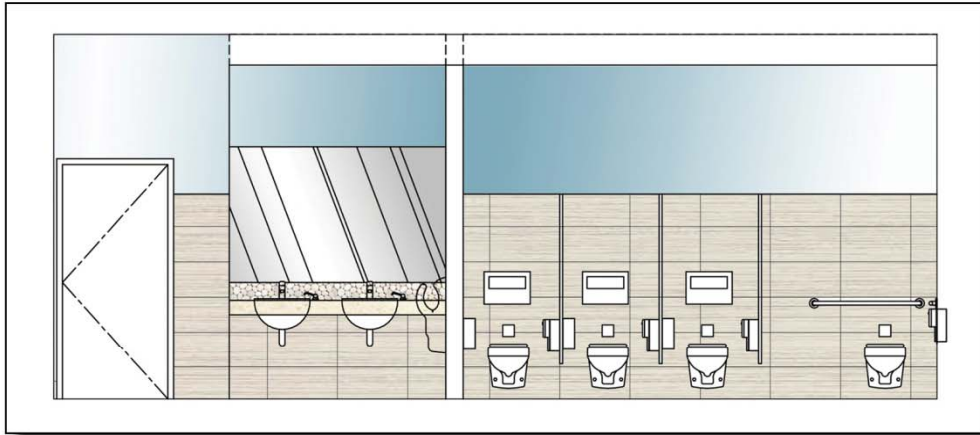
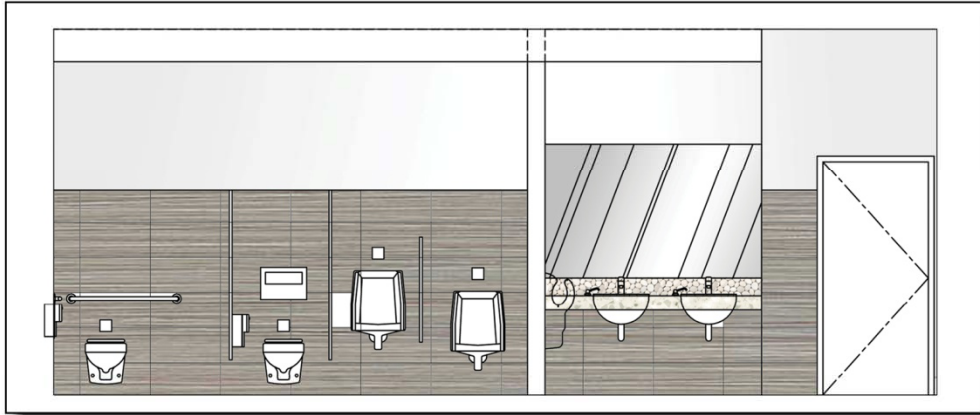
Balboa Center – First Floor



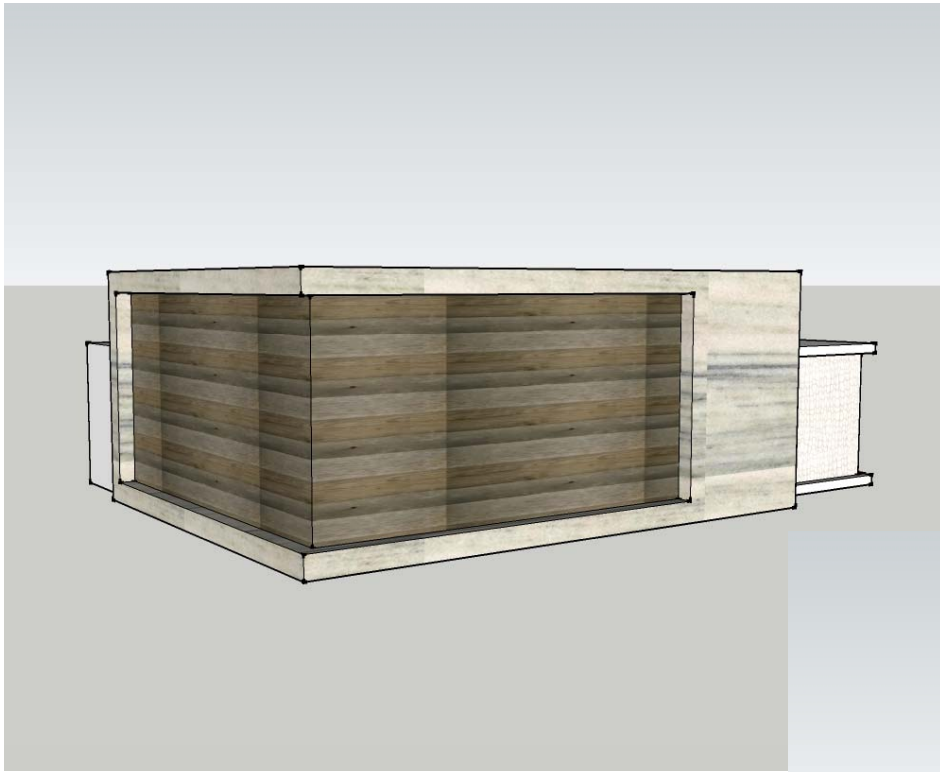
Balboa Center – Second Floor



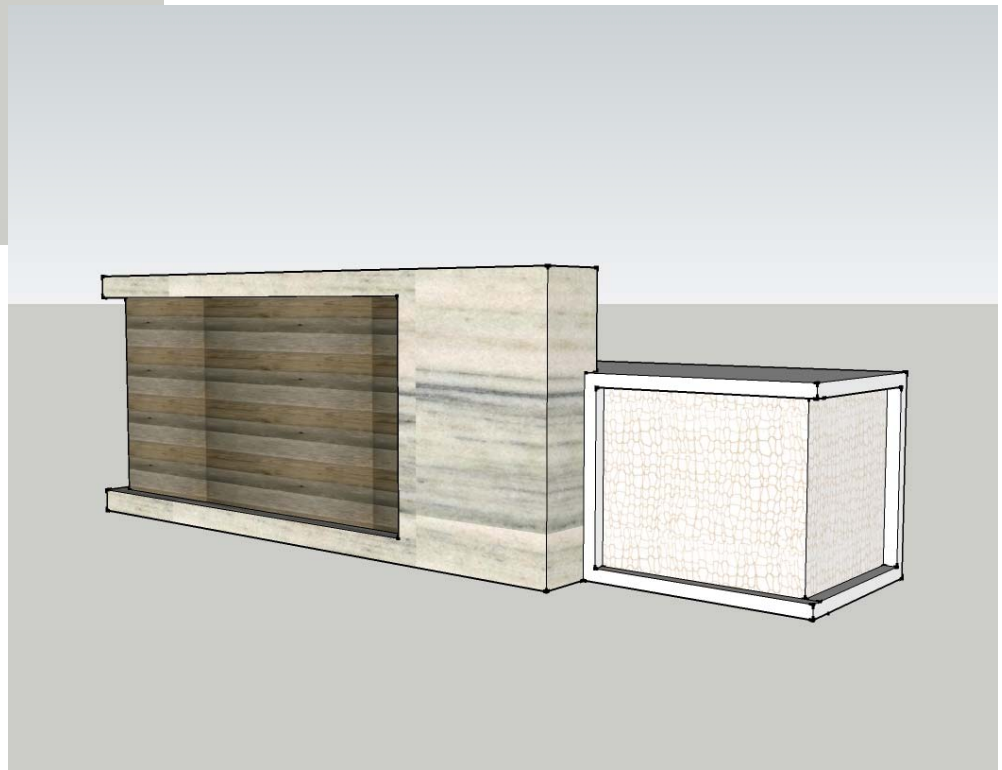
1ST FLOOR LOUNGE WITH FIREPLACE



RESTROOM AND OPEN AREA SINK



Community Center
reception desk



Project Status Update

Upcoming Milestones	Date
CCC Public Hearing	June 2012
Marina/Seawall/Foundation/Dry Utility Design Completion	September 2012
START Project Mobilization/Site Demolition	January 2013
START Marina/Seawall/ Foundation/Dry Utility Construction Mobilization	March 2013
Balboa Center & Park Design Completion	March 2013
START Balboa Center & Park Construction Mobilization	June 2013
START Marina/Docks Construction Mobilization	January 2015
START Site Furnishing Mobilization	Winter 2015
Project Completion	Summer 2015

