



CITY OF NEWPORT BEACH PARKS, BEACHES & RECREATION AGENDA

CITY COUNCIL CHAMBERS @ CIVIC CENTER
100 Civic Center Drive
TUESDAY, April 1, 2014– 6PM

PB&R Commission Members:

Tom Anderson, Chair
Ron Cole, Vice Chair
Kathy Hamilton
Laird Hayes
Walt Howald
Roy Englebrecht
Marie Marston

Staff Members:

Laura Detweiler, Recreation & Senior Services Director
Sean Levin, Recreation Superintendent
Mike Pisani, Acting Municipal Operations Director
Teri Craig, Administrative Assistant

1) CONVENE MEETING OF THE PARKS BEACHES & RECREATION COMMISSION TO ORDER

2) ROLL CALL

3) NOTICE TO THE PUBLIC

Public comments are invited on agenda items generally considered to be within the subject matter jurisdiction of the PB&R Commission. The City provides a yellow sign-in card to assist in the preparation of the minutes. The completion of the card is not required in order to address the PB&R Commission. Speakers must limit comments to three (3) minutes. Before speaking, we invite, but do not require, you to state your name for the record. The PB&R Commission has the discretion to extend or shorten the speakers' time limit on agenda or non-agenda items, provided the time limit adjustment is applied equally to all speakers. As a courtesy, please turn cell phones off or set them in the silent mode.

4) CONSENT CALENDAR

All matters listed under **Consent Calendar 4A-4D** are considered by the PB&R Commission to be routine and will all be enacted by one motion in the form listed below. The Commission Members have received detailed staff reports on each of the items recommending approval and there will be no separate discussion of these items prior to the time the Commission votes on the motion unless members of the Commission, staff, or the public request a specific item to be discussed and/or removed from the Consent Calendar for separate action. Members of the public who wish to discuss a Consent Calendar item should come forward to the lectern upon invitation by the Chair.

A. **Minutes of the March 4, 2014 meeting.**

Recommendation: Waive reading of subject minutes, approve and order filed.

B. **Parks & Operations Division Activity Report.**

Recommendation: Receive/file Activity Report.

C. **Recreation & Seniors Services Activity Report.**

Recommendation: Receive/file Activity Report of past and upcoming projects and events.

D. **Bench Donation — Irvine Terrace Park.**

Recommendation: Recommend approval of bench donation by Renee Nichols to be installed at Irvine Terrace Park for Matthew George Nichols.

5) CURRENT / NEW BUSINESS – Staff Report

A. **Lower Castaways — A Conceptual Review**

Recommendation: Staff recommends that the PB&R Commission review the Lower Castaways conceptual plan and provide feedback to the Lower Castaways Ad Hoc Committee for further refinement.

This Parks, Beaches & Recreation Commission is subject to the Ralph M. Brown Act. Among other things, the Brown Act requires that the Parks, Beaches & Recreation Commission agenda be posted at least seventy-two (72) hours in advance of each regular meeting and that the public be allowed to comment on agenda items before the Parks, Beaches & Recreation Commission and items not on the agenda but are within the subject matter jurisdiction of the Parks, Beaches & Recreation Commission. The Parks, Beaches & Recreation Commission may limit public comments to a reasonable amount of time, generally three (3) minutes per person.

It is the intention of the City of Newport Beach to comply with the Americans with Disabilities Act ("ADA") in all respects. If, as an attendee or a participant at this meeting, you will need special assistance beyond what is normally provided, the City of Newport Beach will attempt to accommodate you in every reasonable manner. If requested, this agenda will be made available in appropriate alternative formats to persons with a disability, as required by Section 202 of the Americans with Disabilities Act of 1990 (42 U.S.C. Sec. 12132), and the federal rules and regulations adopted in implementation thereof. Please contact the Parks, Beaches & Recreation Commission Secretary at least forty-eight (48) hours prior to the meeting to inform us of your particular needs and to determine if accommodation is feasible at (949) 644-3151 or recreation@newportbeachca.gov.

B. West Newport Community Center Ad Hoc Committee Appointment

Recommendation: *Staff recommends that the PB&R Commission appoint two (2) commissioners to serve on the West Newport Community Center Ad Hoc Committee to assist in seeking community input on site locations and amenities for a brand new West Newport Community Center in the western part of Newport Beach.*

6) PARKS, BEACHES & RECREATION COMMISSION / STAFF ANNOUNCEMENTS, AD HOC UPDATES OR MATTERS WHICH MEMBERS WOULD LIKE PLACED ON A FUTURE AGENDA FOR DISCUSSION, ACTION OR REPORT (NON-DISCUSSION ITEM)

7) PUBLIC COMMENTS ON NON-AGENDA ITEMS

Public comments are invited on non-agenda items generally considered to be within the subject matter jurisdiction of the PB&R Commission. Speakers must limit comments to three (3) minutes. Before speaking, we invite, but do not require, you to state your name for the record. The PB&R Commission has the discretion to extend or shorten the speakers' time limit on non-agenda items, provided the time limit adjustment is applied equally to all speakers.

8) ADJOURNMENT

**Parks, Beaches & Recreation Commission
Regular Meeting
March 4, 2014 – 6pm**

1) CONVENE MEETING OF THE PARKS BEACHES & RECREATION COMMISSION TO ORDER – 6:02 p.m.

2) ROLL CALL

Present: Tom Anderson, Chair
Ron Cole, Vice Chair
Kathy Hamilton
Laird Hayes
Walt Howald
Roy Englebrecht
Marie Marston

Staff: Laura Detweiler, Recreation & Senior Services Director
Mike Pisani, Acting Municipal Operations Director
Celeste Jardine-Haug, Senior Services Manager
Teri Craig, Administrative Assistant

3) NOTICE TO THE PUBLIC

4) CONSENT CALENDAR

A. Minutes of the February 4, 2014 regular meeting.

Recommendation: Waive reading of subject minutes, approve and order filed.

B. Parks & Operations Division Activity Report.

Recommendation: Receive/file Activity Report

C. Recreation & Seniors Services Activity Report.

Recommendation: Receive/file Activity Report of past and upcoming projects and events.

Chair Anderson opened the public discussion; seeing none the public discussion was closed.

Motion by Commissioner Cole; seconded by Commissioner Englebrecht, to accept items 4A – 4C of the Consent Calendar. Motion carried by the following roll call vote:

Ayes: Anderson, Cole, Englebrecht, Hamilton, Hayes, Howald, Marston

5) CURRENT / NEW BUSINESS – Staff Report

A. Ad Hoc Committee & Liaison Appointments

Recommendation: Staff recommends that the PB&R Commission appoint to:

- Lower Castaways Ad Hoc Committee – one commissioner to serve with Commissioner Marston to collaborate with the Harbor Commission to develop a conceptual design for Lower Castaways.
- Blackball Surf Regulations Working Group – two commissioners to serve with Vice Chair Cole as liaisons to the Newport Blackball Working Group coordinated by the Fire Department Marine Operations Division to review current surfing policies.

Vice Chair Cole stated that at the Blackball Working Group had met and discussed the need for two additional Commissioners to serve on the Working Group because of all the meetings and information that would be discussed.

Chair Anderson asked if he had any volunteers.

Commissioner Hamilton stated that she would volunteer to serve on the Lower Castaways while Commissioners Hayes and Marston volunteered for the Blackball Working Group.

Chair Anderson opened the public discussion; seeing none the public discussion was closed.

Motion by Commissioner Englebrecht; seconded by Commissioner Howald to appoint:

- Commissioner Hamilton to the Lower Castaways Ad Hoc Committee to serve with Commissioner Marston to collaborate with the Harbor Commission to develop a conceptual design for Lower Castaways.
- Commissioners Hayes and Marston to serve on the Blackball Surf Regulations Working Group with Vice Chair Cole and serve as liaisons to the Newport Blackball Working Group coordinated by the Fire Department Marine Operations Division to review current surfing policies.

Motion carried by the following roll call vote:

Ayes: Anderson, Cole, Englebrecht, Hamilton, Hayes, Howald, Marston

B. Denial of Tree Removal Request Appeal – 2113 Seville Avenue

Recommendation: Consider request of MOD staff to deny appeal of Ann Kenowsky to remove a City Southern Magnolia tree at 2113 Seville Avenue.

Acting Director Pisani stated that this item had been tabled from last month at the homeowner's request. He reminded the Commission that both the Urban Forester and Tree Superintendent had inspected the Southern Magnolia tree and determined that it did not meet the criteria for removal as stated in the G-1 Policy. He stated that the tree is healthy and that "excessive debris" is not a justification for removal.

Chair Anderson opened the public discussion.

Robert Yant stated that he was representing the homeowner Ann Kenowsky. He stated that this tree has a history of debris falling everywhere and that not only is it a nuisance but could be a safety hazard. He stated that they were willing to pay all the costs for removal but would rather have a Palm tree planted than any other type of tree.

Chair Anderson closed the public discussion.

Discussion ensued regarding whether reforestation information had been provided to the homeowner and or tabling the decision until homeowner has time to educate themselves on reforestation.

Acting Director Pisani stated that staff had assured him that this paperwork had been provided; however he would make sure that the homeowner had the appropriate information right away.

Motion by Vice Chair Cole; seconded by Commissioner Englebrecht to deny appeal of Ann enowsky to remove a City Southern Magnolia tree at 2113 Seville Avenue; direct staff to forward the appropriate reforestation paperwork to the homeowner for possible future request.

Motion carried by the following roll call vote:

Ayes: Anderson, Cole, Englebrecht, Hamilton, Hayes, Howald, Marston

C. **Special Tree Removal – 15th Street between San Bernardino & Irvine Avenues**

Recommendation: Consider removal of eleven (11) Special City Sugar Gum trees – Neighborhood Trees along 15th Street between San Bernardino and Irvine Avenues to alleviate drainage issues and damage to the alley approach. These trees will be replaced with Australian Willow trees.

Acting Director Pisani stated that staff Public Works and MOD had met onsite at 15th Street to review the curb and gutter work at the sites of the 11 trees. He stated that staff had concluded that it would be a problem to redirect the curb and gutter around the 11 trees because of costs, parking and further drainage issues. He went on to say that many of the trees have damaged private driveways. He commented that the trees would be replaced with Australian Willows but not on a one for one basis as some of the present locations do not have the space for a replacement tree.

Chair Anderson opened the public discussion

Virginia Spence stated that there are other trees around these 11 that should be removed as well, specifically trees that have conks.

Karl Johnson agreed with Ms. Spencer that it did not seem that staff had looked at all the trees as there were several more that should be removed.

Jim Mosher urged the Commission to remember the removal process and what City Council had recently commented about Poppy Avenue that trees are sometimes more important than correcting infrastructure. He also questioned if the Australian Willow were the appropriate tree for the location.

Chair Anderson closed the public discussion

In response to Commissioner Englebrecht, Acting Director Pisani stated that the Parks and Tree Superintendent was satisfied that the other trees not selected for removal should remain but staff would continue to monitor them.

Discussion ensued regarding the removal of these trees, specifics on curb and gutter work that need to be done and the size of the Australian Willow tree trunk compared to the Sugar Gum tree.

Motion by Commissioner Hamilton; seconded by Commissioner Howald to remove eleven (11) Special City Sugar Gum trees – Neighborhood Trees along 15th Street between San Bernardino and Irvine Avenues to alleviate drainage issues and damage to the alley approach and replace them with Australian Willow trees.

Motion carried by the following roll call vote:

Ayes: Anderson, Cole, Englebrecht, Hamilton, Hayes, Howald, Marston

6) PARKS, BEACHES & RECREATION COMMISSION / STAFF ANNOUNCEMENTS, UPDATES OR MATTERS WHICH MEMBERS WOULD LIKE PLACED ON A FUTURE AGENDA FOR DISCUSSION, ACTION OR REPORT (NON-DISCUSSION ITEM)

Chair Anderson welcomed Commissioner Hayes and asked him to provide a brief background.

Commissioner Hayes stated that he has lived in Newport Beach for over 35 years and that his family has benefitted and participated in many programs offered by the Recreation Department such as lap swimming, ballroom dancing and fly fishing. He went on to say that he wanted to be part of the process rather than a participant and beneficiary. He went on to say that he had recently retired from Orange Coast College and Coast Community College District after 35 years and had taught PE and coached two championship men's soccer teams at OCC. He also noted that he owns a Quarterback and Receiver Camp and is in his 20th year of officiating football as Side Judge 125 and that he recently officiated at his 3rd Super Bowl.


Director Detweiler stated that the Spirit Run would be held at Fashion Island on March 23. She then provided the Recreation & Senior Services section of Priority Goal Setting PowerPoint presentation that was provided to City Council in February.

Newport Beach
 City Council Priority Setting
 Continued to
 Tuesday, February 11, 2014

Recreation and Sr. Services
 Fun Things Coming in 2014!


Pickleball!

- Community Demand
- Mondays and Fridays at NCCC since Fall 2013
- Tournament February 23 at San Joaquin Hills Park
- 1 Tennis Court to be Temporarily Converted Following Tournament
- Permanently Convert Court if Trial Period Successful in FY 15



Traveling Tide Pool Mobile Interpretive Center

- Learn how to be good stewards of the marine environment
- 90,000+ public contacts and 9,000 students per year.
- Sea stars, urchins, sea anemones, barnacles, sea snails




Expansion of Senior Programs

- Expand our case management/home assessment program
- Expand our health and wellness program offerings to include additional health education, resource fairs and health screenings
- Expand night time programming to accommodate working seniors and working family members




Citywide Volunteer Program

- Develop a program to facilitate placement of people who are interested in volunteering within our City programs or with other organizations in our community



Community Youth Center Expanded Programming

- Classes for the Working Woman
- Friday Night Out
- Expanded Music Programming
- Adult Art Programming



Expanded Community Based Special Events

- Breakfast with Santa
- Hootenanny Type Events
- Movies in the Park



Director Detweiler then asked Senior Services Manager Celeste Jardine-Haug to talk about the happenings at OASIS Senior Center.

Manager Jardine-Haug stated that the Senior Center's goal is to keep the senior's active and engaged. She went on to say that the Friends of OASIS has about 6000 members and invited the Commission to the Volunteer Recognition Program put on by staff on April 23. She commented that the Fitness Center continues to grow and that it has about 1800 members and that many pay for private sessions. She also noted that the Fitness Center revenue covers the cost of the program.

Acting Director Pisani stated that in the past few years that Municipal Operations Department (MOD) had reduced funds to enhance community parks. He noted that this year the City had provided funding for a maintenance project at Cliff Drive Park that will consist of replanting, replenishment and refurbishing. He announced that a Community Walk at the Cliff Drive Park would be held on March 8 at 9am to walk around the park and review the vision and listen to the public about the project. He noted that next year they hoped to work on neighborhood parks.

Acting Director Pisani went on to say that the G-1 Committee would meet tomorrow and that they were about 50% done. He hoped to come back to the Commission in May with the Committee's draft and review. He also noted that the Street Tree Designation Committee would meet next week as well. He went on to say that staff had met with Public Works regarding Poppy Drive and that they will hire a Urban Consultant to look at the 100 to 300 blocks of Poppy. The northern blocks of Poppy above Coast Highway was not part of that project. He stated that Parks Division would hire a Contract Arborist to look at those trees regarding their health and location.

Vice Chair Cole stated that as discussed the Blackball Working Group had recommended that two additional Commissioners were needed and was why it had been on the Agenda tonight. He went on to say that they would be meeting again in two to three weeks and would begin to prepare criteria to conduct research during the summer by inviting different user groups to be a part of the survey. He noted that that they would review these statistics at the end of the summer.

Commissioner Englebrecht thanked staff for the PB&R Logo that appeared on the screen.

Commissioner Marston stated that the Upper Castaways Committee had met to review two plans. She went on to say that more input was obtained that the plans will be revised. She noted that when appropriate they would be coming before the Harbor and PB&R Commission for their review as well.

Commissioner Howald thanks Manager Jardine-Haug for coming to the meeting and invited the Commission to the Casino Night on April 12. He also commented that Trader Joes was donating flowers to be placed with the Meals on Wheels to those 70 seniors not able to get out of their homes.

In response to Chair Anderson's question regarding West Newport Community Center. Director Detweiler stated that Pacifica Christian School is interested in leasing the West Newport Community Center in fall 2015. She noted that staff have been looking at two locations that will focus on a building a gymnasium, possibly another senior fitness center, meeting space and a Pickleball court. She reported that a feasibility report would be presented to Council this month.

7) PUBLIC COMMENTS ON NON-AGENDA ITEMS

Bill Sharp stated that he has been involved in Blackball regulations since the 80's and commented that he appreciated all the hard work done by the Group. He commented that the Wedge and the rest of the beach should be looked at separately. He went on to say that he hopes to see what the Group comes back with at the end of the summer.

Jim Mosher referenced the Marina Park Groundbreaking and the Council discussion about dog parks.

Lou McGregor also commented on the Blackball Regulations and agreed that the beach should be divided into different zones for use like other beach cities in California.

8) ADJOURNMENT @ 7:19 p.m.

Submitted by: _____
Teri Craig, Admin Assistant

Approved by: _____
Tom Anderson, Chair



== CITY OF ==

NEWPORT BEACH

PB&R Commission Staff Report

Agenda Item No. 4B
April 1, 2014

TO: Parks, Beaches & Recreation Commission

FROM: Municipal Operations Department
Mike Pisani, Acting Municipal Operations Department Director
949 644-3055, mpisani@newportbeachca.gov

TITLE: February Activity Report – Parks and Trees, and Operations Support Divisions

PARKS MAINTENANCE:

Parks Maintenance Division staff continues working with the Public Works and Recreation and Senior Services Departments on numerous projects that are in the planning and construction phases.

Old City Hall Rose Bushes



The rose bushes at the old City Hall were donated to the City by Sister City Antibes, France in 1990. The Newport Beach Sister City Association was interested in saving them, and the Association found them a new home at the Newport Beach Vineyard and Winery on Mesa Drive. Parks Maintenance Supervisor Paul Ramirez arranged the transfer of the plants to the winery where the rose bushes can be enjoyed by visitors.

OPERATIONS SUPPORT MAINTENANCE:

High Tide, Rainfall & Storm Debris Update

MOD crews were very busy managing the combination of high tides and heavy rainfall that started the last week of February and continued through early March. Twenty-seven crew members operated 26 portable and stationary pumps throughout the Newport Peninsula and Balboa Island, pumping down flooded street ends during the early morning and evening hours.



On Friday, February 28th, the highest tide for the series reached a 7.6' peak, which was 1.3' above the tidal chart prediction. Many streets experienced flooding due to rainfall when the tidal valves were closed. The rainfall totaled 2.05", which brought the season total recorded at the Corporation Yard to 3.85".



As soon as the storms passed, the Beach Maintenance Crew started cleaning the ocean shorelines. Windblown sand was removed from the oceanfront sidewalk and the street ends. Hand crews also started the process of removing tons of storm debris from Balboa Island beaches. While material was being removed, more was floating out into the bay and the crew continued to remove debris in the following weeks. The debris was stockpiled at West Ocean Front at Orange Street and was hauled away.



During the rain event, Operations Support Division staff was supplemented by members of the Asphalt, Concrete, Water, and Wastewater Crews. Additionally, our administrative support staff was kept busy handling phone calls from concerned residents. The storm response was a great coordinated team effort with contributions from different sections of the Department.

TREES:

Monthly Update on City Trees

As part of the City's overall grid and annual trimming schedule, the City's tree service contractor pruned trees within the Newport Heights, Balboa Peninsula, Balboa Island, Eastbluff, and Newport Coast areas. Additionally, annual pruning of Ficus and Palm trees are occurring throughout the City.

| <i>Month of:</i> | <i>Trees Trimmed:</i> | <i>Trees Removed:</i> | <i>Trees Planted:</i> |
|------------------|-----------------------|-----------------------|-----------------------|
| February | 2,103 | 165 | 0 |

Many of the trees removed occurred at Newport Coast area along the slopes. There was a major effort to remove all dead and declining trees within the slope areas.

Arbor Day Celebration

The 2014 Arbor Day Celebration was held at Eastbluff Elementary School on Friday, March 7th. Staff planned the event with the assistance of School Principal Cheryl Beck. Parks and Trees Superintendent Dan Sereno emceed the event and provided a presentation on the transformation of Newport Beach over the past 70 years, from an

area with very few trees to one containing the urban forest of today. The day's festivities included:

- Mayor ProTem Edward D. Selich presenting the Arbor Day Proclamation to Principal Beck, the Student Council, and over 50 third grade students;



- Ron Cole, Vice-Chair of the Parks, Beaches, and Recreation Commission, speaking on the importance of trees as a natural resource;
- John Conway presenting the Tree City USA Flag to the Student Council representatives and Growth Award to Mayor ProTem Selich;
- The 3rd grade students reading a couple of poems on trees; and



- The Rotary Club of Newport-Balboa representatives Jerry Klemer, Chair of Arbor Day, and Bob Merring, President of The Rotary Club providing and distributing the seedlings (Golden Trumpet) to the 3rd graders and guests.



Prepared by:

A handwritten signature in black ink, appearing to read "Dan Sereno".

Dan Sereno, Superintendent
Parks and Trees Division

A handwritten signature in blue ink, appearing to read "James L. Auger".

James Auger, Superintendent
Operations Support Division

**Recreation Services
 Monthly Activities Report**

To: Parks, Beaches & Recreation Commission

From: Sean Levin, Recreation Superintendent
 Celeste Jardine-Haug, Senior Services Manager

Re: Recreation & Senior Services Department Monthly Activities Report



OASIS Fitness Center Demo

The Fitness Center provided a 30 minute demonstration for its members using the Kinesis machine on February 26. One of the OASIS personal trainers, Michael Ryan, provided information on core muscle groups targeted by using the machine and a personal workout routine for those in attendance.



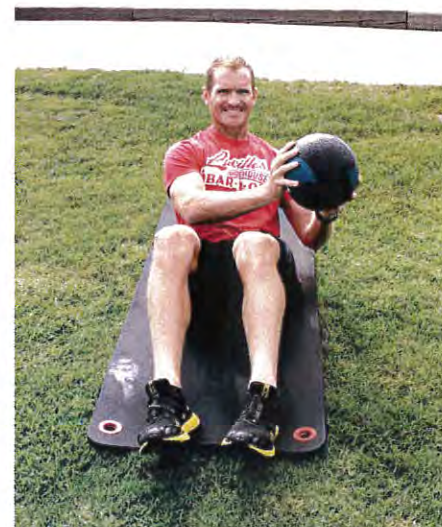
Seniors in Newport Beach are keeping up with their New Year's Resolutions and the Fitness Center continues to be an integral part of the senior community. At the end of February, membership totaled 1,870. Of these members, nearly 60% use the gym on a monthly basis. Personal training also continues to be a popular option for members, with a total of 528 personal training sessions held in the month of February.

Get Fit After Work!

Did you know that the Recreation & Senior Services Department offers an array of fitness classes perfect for the working person's schedule? Each class is taught by qualified enthusiastic instructors. Classes are aimed to accommodate different levels and are fun and effective. Get the results you want and enroll today!

- | | | | |
|----------------------------|--------------------------------|-----|-------------|
| • Shimmy Belly Dancing | Bonita Creek Community Center | M | 6:30-8:00pm |
| • Zumba Gold Dance Fitness | OASIS Senior Center | Tu | 5:30-6:30pm |
| • Hatha Yoga (18+ yrs) | OASIS Senior Center | Tu | 6:30-7:30pm |
| • Therapeutic Yoga | Carroll Beek Center | Tu | 6:30-7:30pm |
| • Cardio, Yoga, Sculpt | Newport Coast Community Center | Tu | 6:45-7:45pm |
| • Zumba Dance Fitness | Community Youth Center (CYC) | W | 6:30-7:30pm |
| • Kickfit Cardio | Community Youth Center (CYC) | M/W | 6:00-7:00pm |
| • Breathing and Meditation | OASIS Senior Center | Th | 6:30-7:30pm |
| • Pilates | OASIS Senior Center | W | 5:30-6:30pm |

For more information on these classes and to explore other fitness opportunities, please visit www.newportbeachca.gov and click on "Recreation Classes".



American Diabetes Association Workshops

The OASIS is pleased to join the American Diabetes Association in presenting a six part informative health program emphasizing the important steps to reduce your risk and better manage diabetes.



Workshops will be held on the 2nd Wednesday for six months.

- April 9: **Everybody Move for your Health** (focuses on the benefits of exercise)
May 14: **Health & Flavor in the Kitchen** (culinary session teaching healthy cooking tips, nutrition labels, portion control, eating out, etc.)
June 11: **Something to Smile About** (dental health)
July 9: **With All My Heart** (ABCS of diabetes management and heart health)
August 13: **Healthy Mind & Healthy Body** (learn the difference between depression, the blues, and stress relieving activities)

The Mind You Save Could Be Your Own

On March 19th, at OASIS, Dr. Barry Friedberg, Board Certified Anesthesiologist and President, Goldilocks Anesthesia Foundation, provided an informative lecture on the dangers of anesthesiology.



Spring Registration Now Open!

Registration for the upcoming spring session of the *Newport Navigator* opened February 27. Classes such as bridge, art and zumba are still available as well as some great new classes. New programs include; Family Surf Saturdays, Camera and Photoshop (held in the Central Library's new media lab), and new tennis programs brought to you by former USC player, Alex Venidis. Fourteen spring break camps were by the City and included new "Hip Hop Around the Word" and "Newport Beach Volleyball Academy" camps.

Marine Protection Welcomes a New Interpreter!

Bernice (B.B.) Villanueva joins the Marine Protection and Education team as the newest Marine Naturalist Interpreter. Originally from San Diego, CA, Bernice ventured to Northern California to study Earth & Ocean Sciences and Physics at UC Santa Cruz. Working at the Long Marine Lab and Seymour Marine Discovery Center throughout her undergraduate career, she established her passion for environmental education while caring for her counterpart and soul mate, Burnyce, a 1,500 lb female Northern Elephant Seal. Bernice continued her educational role as an instructor for a remote sensing institution in San Diego, but is now eager to move forward with the Marine Protection team & surround herself with sun, sand, and saltwater.





Youth Government Day 2014

This year, Youth Government Day occurred on Thursday, March 13, 2014. Approximately 47 high school students from Newport Harbor High and Corona del Mar High took part in this unique experience in a brand-new setting: the Civic Center Community Room and the new City Council Chambers. Students began the day in the Community Room for a brief presentation by Mayor Pro Tem Ed Selich and City Manager Dave Kiff. Each participant then spent time with a City staff member or with the Mayor Pro Tem, absorbing job duties and preparing for the mock City Council meeting. The day concluded with the mock City Council having to vote on the parking problems at Corona del Mar High School and on Blackball for surfers in Newport Beach. Students and staff then adjourned to lunch in the Community Room and on the adjacent lawn.

The Newport Beach Mayor's Youth Council established Youth Government Day to provide high school students the unique opportunity to observe and be involved in the functions of local government.

Thanks go out to all City employees and departments for their participation in Youth Government Day 2014!

Newport Beach Exploring Post #135

A partnership between the City of Newport Beach and the Exploring Program of the Boy Scouts of America, Post #135 brings teens together with career professionals in the field of marine conservation and education. Hand-selected participants from Newport Mesa School District volunteer alongside Marine Protection Staff to gain hands-on career experience while providing focused and relevant community service. The motivated members of Post #135 conduct marine protected area patrols, educate tidepool visitors, contribute to Marine Life Inventories, and more. For additional information about this program, please contact mclemente@newportbeachca.gov.



Philomena Cullen has been a member of the OASIS Fitness Center since March 2013. Philomena was diagnosed with MS fourteen years ago and has worked her way through the difficulties associated with it. She began working with Danielle Hernandez, one of the personal trainers, and has since increased her performance tremendously.

At the start of their training sessions, Philomena was unable to do one repetition on the Chest Press machine using the lightest resistance setting of 10 lbs. Philomena was determined and motivated to use the machine and develop her upper body strength. She can now perform two sets of 12 reps on the same machine using a weight setting of 20 lbs. "She is extremely dedicated, works so hard and has such a wonderful attitude," says Danielle of Philomena. In addition to increasing her upper body strength, Philomena has also doubled her resistance setting on the leg press machine. She is excited about the progress she is making and reports several improvements in her daily activities.

Thanks to her determination, Philomena can now get in and out of her car with more efficiency and ease, and her walking has improved greatly. "I was unable to lift my dishes and place them on the kitchen shelves that are above my head and now I can do it," Philomena proudly states. She has noticed an increase in energy and improved stamina throughout the day which allows her to get more tasks accomplished. Philomena strives to overcome the challenges of her diagnosis through regular exercise, an active lifestyle and a positive mental outlook.



OASIS Legal Lecture

Workshop For Trustees and Successor Trustees

Presented by Regina M. Campbell, Attorney at Law on April 23

- Has someone left you in charge of their trust, as trustee either by death or incapacity?
- Are you concerned with protecting yourself from trustee liability? (This is a highly litigated area of the law.)
- Have you named your children or other family members or friends as successor trustees of your own trust, and want them to know what the job entails?
- Are you up-to-date on recent changes in trust law?

If your answer is "Yes" to any of these questions, then you and/or your successor trustees need to attend this Workshop. Attorney Regina M. Campbell, a trust estate and tax attorney in Newport Beach will discuss crucial steps to follow for a successful trust administration. Handouts will be provided including a Trust Administration "To Do" check list.

Camp Newport Expo

The annual Camp Newport Expo was held on Sunday, March 23rd. This event gives Newport Beach residents the opportunity to get a sneak peek the summer camps that will be offered and to take advantage of the early bird registration. This year, we had over 27 booths with 24 different contract instructors participating. Attendees had the opportunity to climb a rock wall, participate in a skateboard demonstration in the mobile skate park, make crafts, dance, and try a variety of sports. Summer here we come!



Park Patrol

Requested calls are assigned visits by staff or schedule or phone requests. Customer Contacts are the number of times they stopped and spoke to customers other than requested calls. Due to the timing of the meeting, these monthly summaries will be two months behind (i.e. in June you will receive April summary). During the month of **February** Park Patrol had the following number of contacts:

1. REQUESTED Calls

- 30 with Youth Sports Groups
- 26 Field related issues/checks
- 0 Park/Picnic/reservation issues/checks
- 38 Community Center issues/checks
- 37 Playground checks
- 28 other

2. PUBLIC CONTACTS

- 96 Education
- 26 Alcohol
- 118 Dog related
- Written Warning Issued: 1 for parking violation
- Citations Issued – 5 for parking
-

FACILITY RENTALS & SPECIAL EVENT PERMITS

During the period of February 16 – March 15, 2014 there were:

- 10 Picnic/Park Area Rentals
- 5 Room Rentals
- 1 Field Rentals
- 6 Gym Rentals
- 3 OASIS Classroom Rentals
- 2 OASIS Event Center Rentals
- 14 Civic Center Rentals

As of March 15, 2014, there were 48 Special Event Permits processed and issued for the year. Those events of note for this period are:

Toshiba Classic Golf Tournament – NB Country Club, 3/10-16/14 - Attendance: 22,000

FRIDAY, APRIL 4**2014 Youth Track Meet****\$10 residents; \$13 non-residents****CDM HIGH SCHOOL****SUNDAY, APRIL 6****Reserve Upper Loop Evening Hike – 5-7pm****Free****NEWPORT COAST COMMUNITY CENTER****FRIDAY, APRIL 11****Flora & Fauna of Buck Gully Hike, 9-11am****Free****OASIS SENIOR CENTER (5TH & MARGUERITE PARKING LOT)****SATURDAY, APRIL 12****Roaring 20's Casino Party - 5:00-9:30pm****\$40/Advance Purchase \$45/Event Day****OASIS SENIOR CENTER (801 NARCISSUS AVENUE)****WEDNESDAY, APRIL 23****Workshop for Trustees – 10-11:30am****Free****OASIS SENIOR CENTER (801 NARCISSUS AVENUE)****SATURDAY, MAY 10****Saturday on the Green – 10am-3pm****For additional information call 640-1022****LAWN BOWLING CENTER (1550 CROWN DRIVE NORTH)****SATURDAY, JUNE 7****33rd CdM Scenic 5K– Race Day Registration begins @ 6am****\$50 on Race Day****OCEAN BOULEVARD IN CORONA DEL MAR**



CITY OF

NEWPORT BEACH

PB&R Commission Staff Report

Agenda Item No. 4D
April 1, 2014

TO: Parks, Beaches & Recreation Commission

FROM: Municipal Operations Department
Mike Pisani, Acting Municipal Operations Director
949 644-3055, mpisani@newportbeachca.gov

TITLE: Bench Donation Request – Irvine Terrace Park

RECOMMENDATION:

Staff recommends that the Parks, Beaches and Recreation Commission approve a bench donation request at Irvine Park for Matthew George Nichols.

DISCUSSION:

City Council Policy B-17 establishes criteria for parks, facilities, and recreation program donations within the City. The policy is structured to establish a fair and uniform procedure for making gifts to the City, and to make the donation process easier for staff and donors.


The City has received a donation request from Renee Nichols (Attachment A) to donate a Santa Monica Model bench at Irvine Terrace Park (Attachment B). This bench donation would replace an existing wooden bench that has reached the end of its useful life. The cost of the donation will include the 10% maintenance fee required by Council Policy B-17. The donation request and proposed location were approved by the Acting Municipal Operations Director.

Since the value of the donation is greater than \$1,000, the donation is eligible to receive a dedicatory plaque. The submitted plaques verbiage, which complies with City Council Policy B-17, is "In Memory of Matthew George Nichols "DIME"".

NOTICING:

Ms. Nichols and Mayor Pro Tem Edward D. Selich have received a copy of this report and a notice of the Commission meeting. The bench donation is to replace an existing bench, which does not require noticing adjacent residents.

Submitted by:

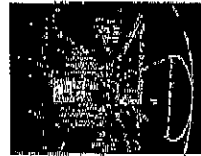


Mike Pisani, Acting Director
Municipal Operations Department

Attachments: A. Donation Request Form
 B. Map of donation location

Gifts for Tomorrow Order Request Form

Item # Description
100 (SANTA MONICA MODEL)



Contact Information

Name Renee Nichols
24 Windflower
Mailing Address Irvine, CA: 92603
(949) 433-9070
Phone Renee Nichols
Signature

DEDICATION PLAQUE INFO

Donors may elect to provide a dedicatory plaque if the value of the donation is greater than \$1,000. Contact city staff for more information.

Yes, I am interested in dedicatory plaque for my donations.

Plaque is donated for,

Matthew George Nichols "DIME"
First Name Last Name



NEWPORT BEACH 1906-2006



Newport
Beach
GIS



Feet

Disclaimer: Every reasonable effort has been made to assure the accuracy of the data provided, however, The City of Newport Beach and its employees and agents disclaim any and all responsibility from or relating to any results obtained in its use.

Imagery: 2009-2012 photos provided by Eagle Imaging www.eagleaerial.com

3/18/2014



NEWPORT BEACH

PB&R Commission Staff Report

Item No. 5A
April 1, 2014

TO: Parks, Beaches & Recreation Commission

FROM: Recreation Department
Laura Detweiler, Rec & Sr Services Director
949-644-3157, LDetweiler@newportbeachca.gov

TITLE: Lower Castaways — A Conceptual Review

RECOMMENDATION:

Staff recommends that the PB&R Commission review the Lower Castaways conceptual plan and provide feedback to the Lower Castaways Ad Hoc Committee for further refinement.

DISCUSSION:

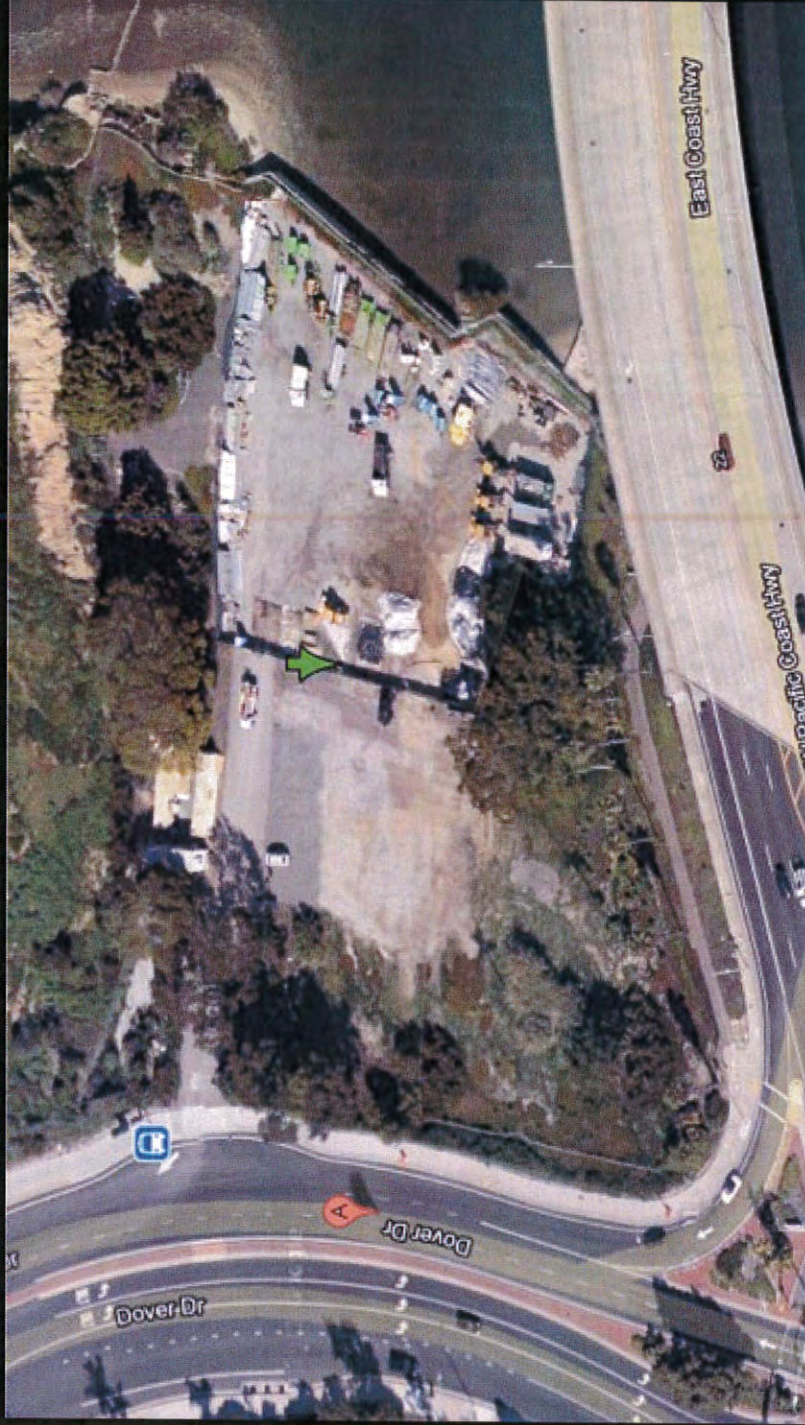
The Harbor/PB&R Commission Ad Hoc Committee will review the current status of the Lower Castaways conceptual plan and requests feedback from both the public and Commission. The Lower Castaways Land Use Considerations PowerPoint is provided in Attachment A.

NOTICING:

The agenda item has been noticed according to the Brown Act (72 hours in advance of the meeting at which the PB&R Commission considers the item). Public Notice postcards (Attachment B) were sent to 674 addresses as illustrated in the Notification Area Map (Attachment C).

Attachment: A. Lower Castaways Land Use Considerations PowerPoint
B. Public Notice of Lower Castaways Agenda Item
C. Notification Area Map

Lower Castaways – Land Use Considerations



Parks, Beaches and Recreation Commission
Harbor Commissioner Girling
April 1, 2014

Outline – Lower Castaways



- Harbor Commission Objective
- Background (Irvine Company, Grant Deed)
- Historic Photos
- The Lower Castaways Parcel
 - City Presentation – given by Jaime Murillo on 3/13/2013 at Study Session (zoning, access, etc.)
 - MPA
- Timeline to date

Outline—Lower Castaways (cont'd)



- Anchor QEA study (bulkhead)
- Preliminary Renderings
- Challenges
- Next Steps
- Q & A

Harbor Commission Goals & Objectives



Harbor Commission Responsibility: Ensure the Long Term Welfare of Newport Harbor

Objective #2: Complete the development of recommendations for the best public use of Lower Castaways, the last remaining undeveloped city-owned waterfront property. Collaborate with the Parks, Beaches and Recreation Commission in developing specific recommendations for presentation to the City Council. [Girling, Avery, Rhyne]



Vicinity Map

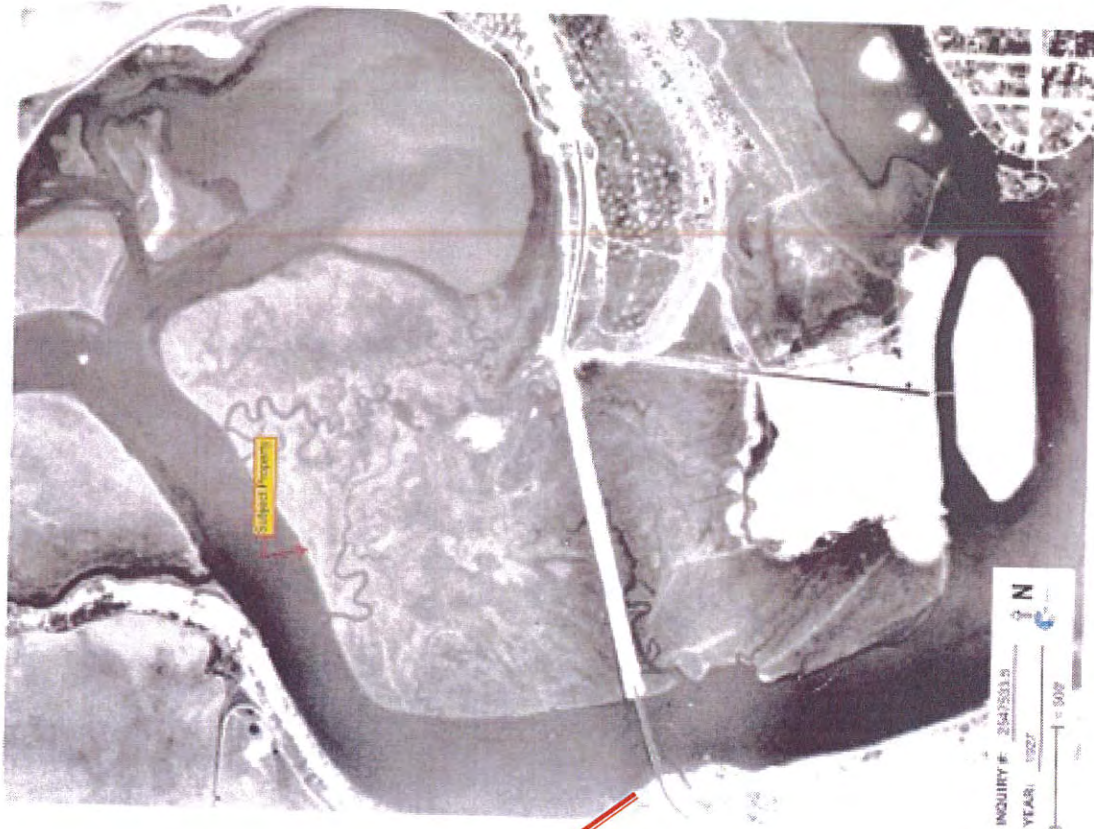


Background



- In exchange for development rights in Newport Center, the Irvine Company granted the property to the City
- Grant Deed recorded October 17, 2008
- Deed includes easements and restrictions on use
- Historical Photos

Historical Photos - 1927



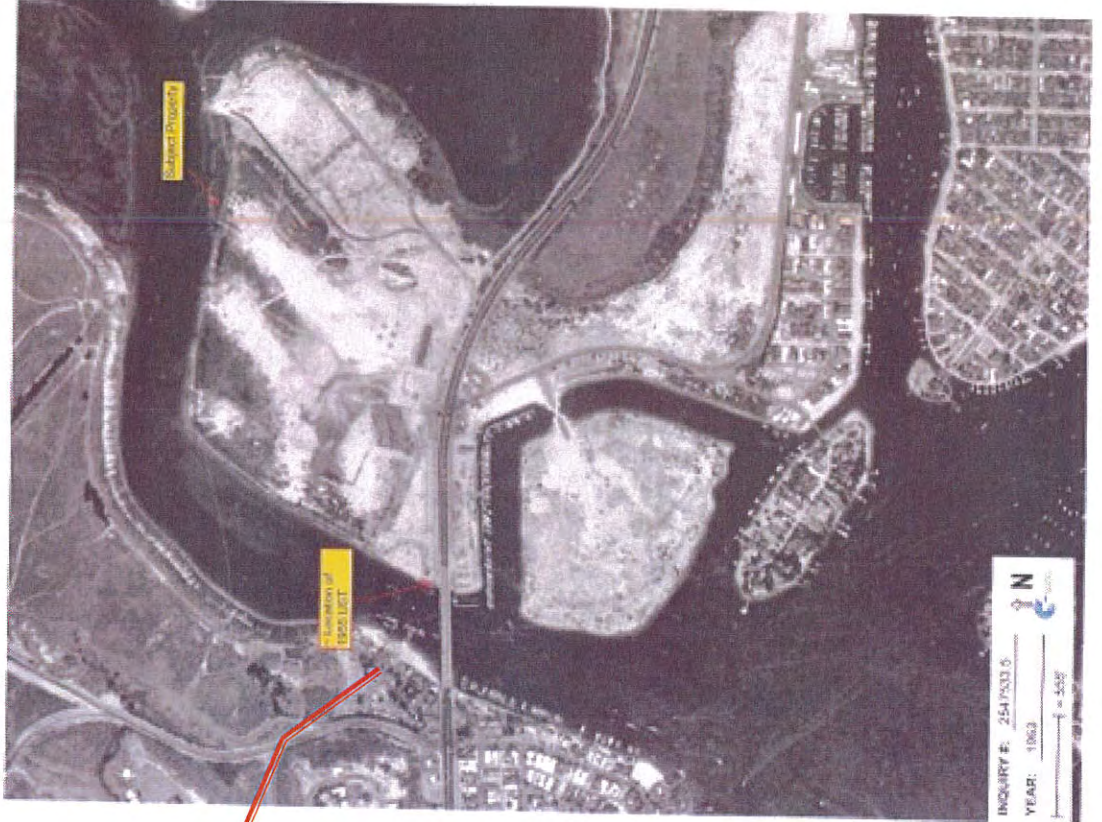
Property

Historical Photos - 1938



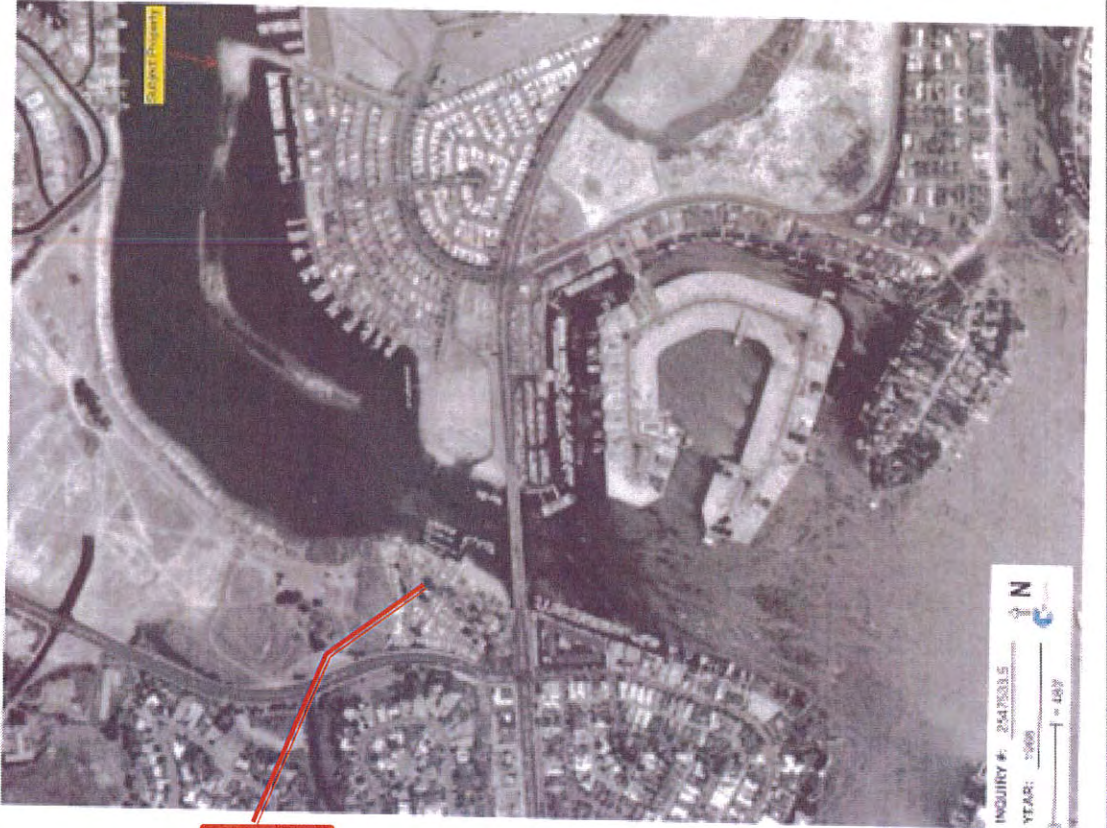
Property

Historical Photos - 1953



Property

Historical Photos - 1968



Property

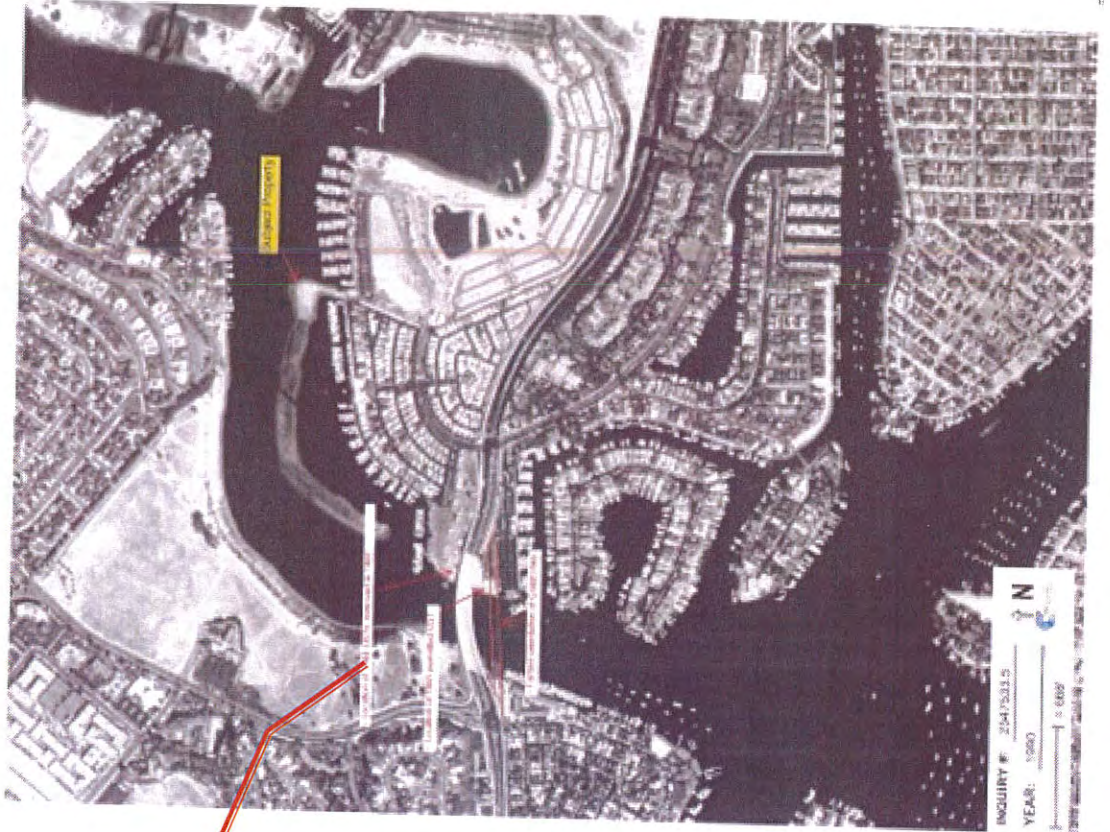
Historical Photos - 1977



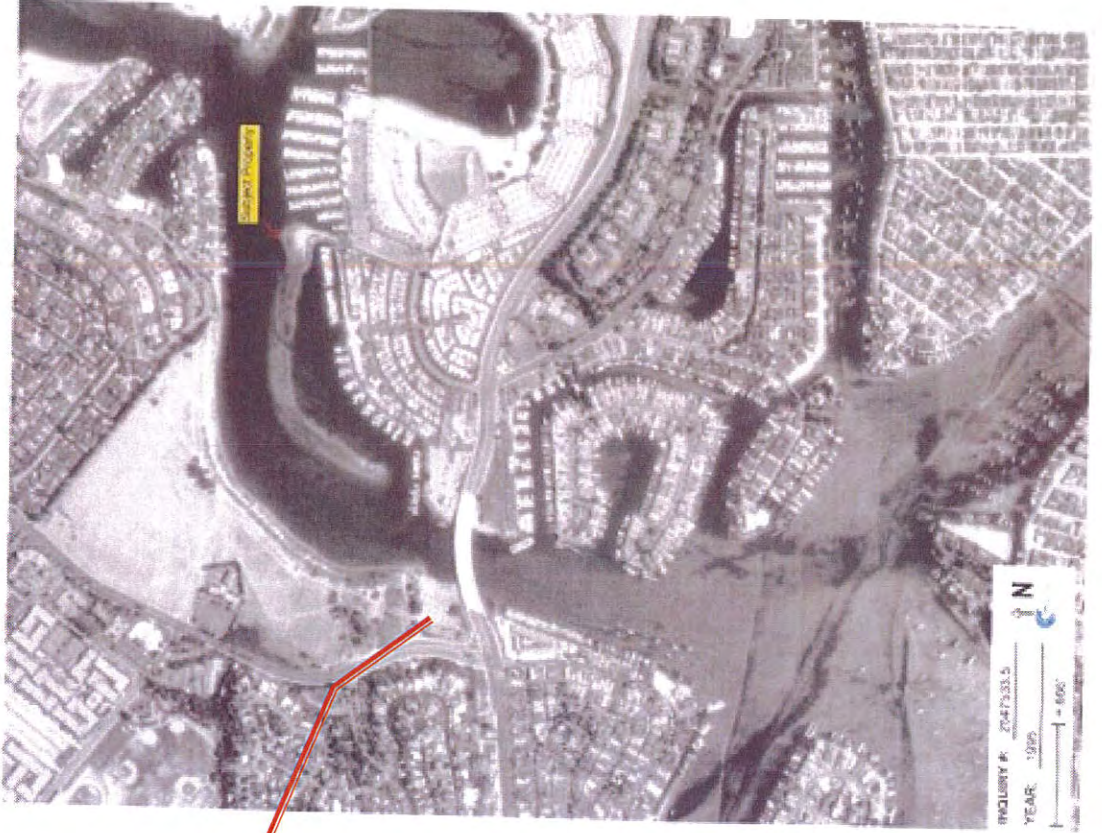
Property

Historical Photos - 1990

Property



Historical Photos - 1995



Property

Historical Photos - 2002



Property

Historical Photos - 2005



Property

Surrounding Uses





Aerial



Existing On-Site Uses



- Staging for dredging projects, Civic Center mock-ups, and other smaller area projects
- Off-site parking for construction related projects
 - Mariner's Pointe- Lease Agreement expires July 2014
 - Bayshores HOA- Lease Agreement expires Nov 2014
- California Recreation Company Usage
 - Marina maintenance & operation activities
 - Easement expires upon 60 day written notice

Land Use Regulations



- General Plan
 - Recreational and Marine Commercial (CM)
- Coastal Land Use Plan
 - Recreational and Marine Commercial (CM-A)
- Deed Restrictions
 - Permits marine-related uses
 - Prohibits private commercial marina
- Zoning
 - Planned Community (inconsistent with deed)

General Plan: Recreational & Marine Commercial (CM)



- The CM designation is intended to provide for commercial development on or near the bay in a manner that will:
 - Encourage continued coastal-dependent and coastal-related uses
 - Maintain marine theme and character
 - Encourage mutually supportive businesses
 - Encourage visitor-serving and recreational uses
 - Encourage physical and visual access to the bay on waterfront commercial and industrial building sites on or near the bay

- **2,000 square-foot maximum development limit (Anomaly No. 54)**
 - Increased development - GP Amendment required
 - Charter Section 423 considerations

Coastal Land Use Plan: CM-A



- Same purpose as General Plan
- CM-A allows 0.0 to 0.3 FAR
 - Equates to 52,717 SF maximum, but still limited by 2,000 SF General Plan development limit
- CLUP includes several policies that govern the use of the property, public access and recreation, and coastal resource protection.
- Future plan would need to be consistent with these policies
- Shoreline Height Limitation Zone= 35 feet max

Deed Restrictions: Covenants



1) Use of Property

- Municipal or municipally-sponsored use
- CM uses per General Plan
 - Includes park, marine educational or research facility
- In Furtherance of Tideland Trust
 - Marine/harbor dependent uses, fishing, water-oriented recreation, public access, conservation, etc.
- Prohibits transfer, sale, exchange to private, for-profit entity for operation of commercial marina

Deed Restrictions: Covenants



2) Review of Improvement Plans

- Provides Grantor opportunity to review and comment on proposed improvements

3) Maintenance and Repairs

- Maintain in safe and attractive condition

4) No Transfer of Property

- Exceptions such as utilities, other gov't entities, operation of permitted uses.

Zoning: Planned Community



- **Currently zoned Planned Community District No. 37 (Castaways Marina)**
 - Adopted in 1992 to allow the development of a commercial marina use
 - One allowed use- commercial marina
 - Inconsistent with Deed Restriction (unless public)
- **Zoning Compliance Options:**
 - Amend PC Development Plan to allow proposed use
 - Rezone to Commercial Recreation & Marine
 - City Council may exempt City facilities from zoning

CEQA Considerations



- California Environmental Quality Act
- Exemptions, Mitigated Negative Declaration, or Environmental Impact Report
- Analyze and disclose potential impacts
 - Aesthetics, Bio, Air, Water, Land Use, Traffic, Utilities, Noise, Cultural, Public Services, Recreation, Housing
 - Avoid or mitigate impacts where feasible

Access Considerations



Existing Driveway

- Right turn in
- Right turn out

Future Driveway Location

- Current location or shift north

Considerations

- U-turn at Cliff Drive to access Coast Highway
- No U-turn permitted at SB Dover at Coast Hwy.
- Merge lane on Dover Dr. occurs in front of driveway

Easements



- 30' Wide Water Line Easement
- Primary water line across bay



Marine Protected Area "MPA"

- Lower Castaways is in a Marine Protected Area ("MPA") called the Upper Newport Bay State Marine Conservation Area
- In applying for permit w/ the Coastal Commission, DFW would provide comment that LC development is in conflict w/ current law and CC would not approve

Marine Protected Area "MPA" (cont'd)

- Revolves around definition of "take" which is defined as damage to habitat or organisms killed.
- Take is allowed for existing facilities. DFW is working on a new policy/approach to include new structures / facilities (dock or pier)

Anchor OEA Report – 8/12/13

- Wall length: 300' w/ 6' wide concrete panels
- Wall is reaching or has reached the end of it usable service life
- No immediate danger of failure or collapse, but appears unstable and may be further weakened in an EQ (some cracking), but structure is not a reliable structure for site use & development
- City should monitor on an annual basis
- General order of magnitude cost for a simple sheet pile wall installed would range from \$500,000 to \$1,000,000 (in front of old one)

Timeline



- 10/5/2012 – First meeting (Karen Rhyne, Brad Avery)
- 2/14/2013 – Contacted PBR Commission
- 3/5/2013 – Spoke at PBR Commission meeting
- 3/13/2013 – Study Session, City presented
- 6/28/2013 – Met with Dave Kiff & PBR representatives
- 8/6/2013 – PBR commissioners appointed
- 9/6/2013 – First meeting w/ PBR as official members
- 11/5/2013 – Committee meeting – received renderings
- 3/3/2014 – Committee meeting – received revised renderings
- 3/12/14 – Harbor Commission meeting

Ideas from Study Session et al

- By water, by land, by bike"
- Restaurant on site (e.g., Castaways, Wil Wright's, etc.)
- Connecting Upper and Lower Castaways
- Commercial use boat launch given shortage in City (could be limited to smaller craft such as kayaks & canoes) Staging area for renovation/rebuilding boats
- Rental facility for boats, bikes & SUP
- Public dock or pier
- Education and restoration center – could include growing & planting help & eel grass
- "Clean water camp" – staging area for volunteers to bring trash from bay
- Marine recycling center / marine waste disposal facility (County might participate)
- Commercial crane w/ boat storage facility

Ideas from Study Session et al (cont'd)

- Base for a water taxi operation
- Area for unloading lobster pots
- Community garden
- Regular parking, overflow parking or parking for special events in the City
- Multi-use site incorporating many of above-listed ideas
- Public restrooms
- Work with Bike Master Plan Committee
- Concessions (food trucks)

Preliminary Plan

- Currently zoned as commercial marina – **needs to be rezoned**. *City attorney confirmed that they believe the intent of the Grant Deed is to permit the City to provide municipal services and activities but to preclude the City from contracting with a commercial operator and operate a boat marina.*
- Multi-use, recreational hub incorporating biking, hiking and boating activities along with 85-90 parking spaces, public restrooms and a stairway connecting to the Upper Castaways
- Built in phases (overall approval applied for at outset)
- Minimalist approach

Preliminary Renderings

UPPER CASTAWAYS

BACK BAY

PACIFIC COAST HIGHWAY

DOVER DRIVE

WATERFRONT & EVENT LAWN

STREET EDGE & PARKING

GRAND STAIRCASE & HILLSIDE

LOWER CASTAWAYS PARK
CITY OF NEWPORT BEACH

CONCEPT
DWD GROUP, LLC
MARCH 2014

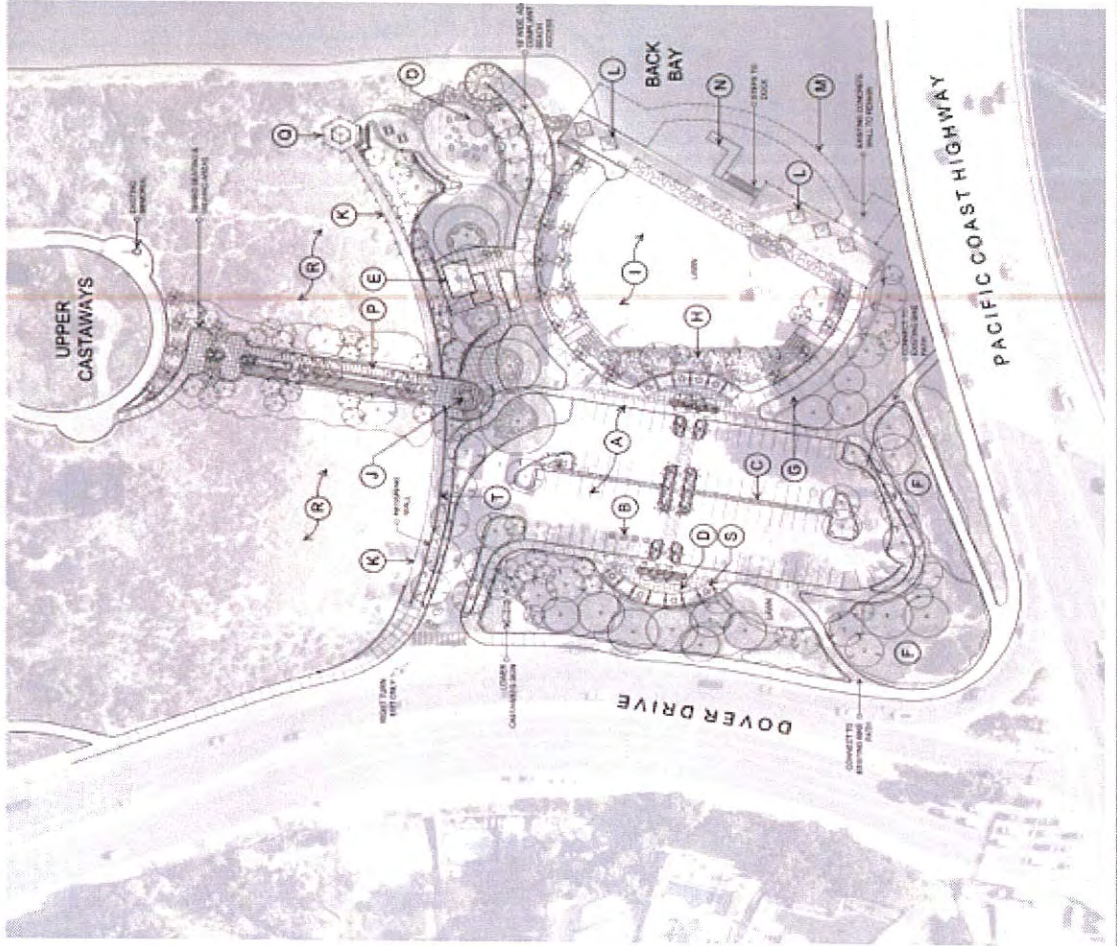
LEGEND:

- A PARKING (BY TOTAL SPACES)
- B ELECTRIC VEHICLE CHARGING STATION
- C WATER QUALITY TREATMENT FACILITY
- D TRAILS AND BIKEWAYS
- E PLAY AND RECREATION
- F PARK ENTRY ZONE
- G EXISTING TREES TO BE PROTECTED AND UNDISTURBED
- H NEW PATH CONNECTIONS RELAYING TRAIL
- I NEW TRAIL CONNECTIONS
- J SHARED USE ACCESS POINTWAY / ADA COMPLIANT
- K WATERFRONT PARK
- L LANDSCAPE TO LANDSCAPE (LOCAL FEEL) (LANDSCAPE LUNCH)
- M SANITARIUM, LAUNDRY AND RESTROOMS
- N OUTDOOR STAGE WITH RECEPTION STAGING
- O FUTURE PLANTING COORDINATION WITH LANDSCAPE ARCHITECT
- P 11' TYPICAL MARKET FOOD TRUCKS
- Q LOCAL LANDSCAPE BUILDINGS
- R ELEVATED BOARDWALK & RESTROOMS (WALK)
- S BACK BAY TOWER PLATFORM
- T BOARD STAIRWALK
- U PLAY AND RECREATION
- V TERRACE
- W RESTORE VEGETATION ON HILLSIDE
- X NEW SPOTS & LANDSCAPE

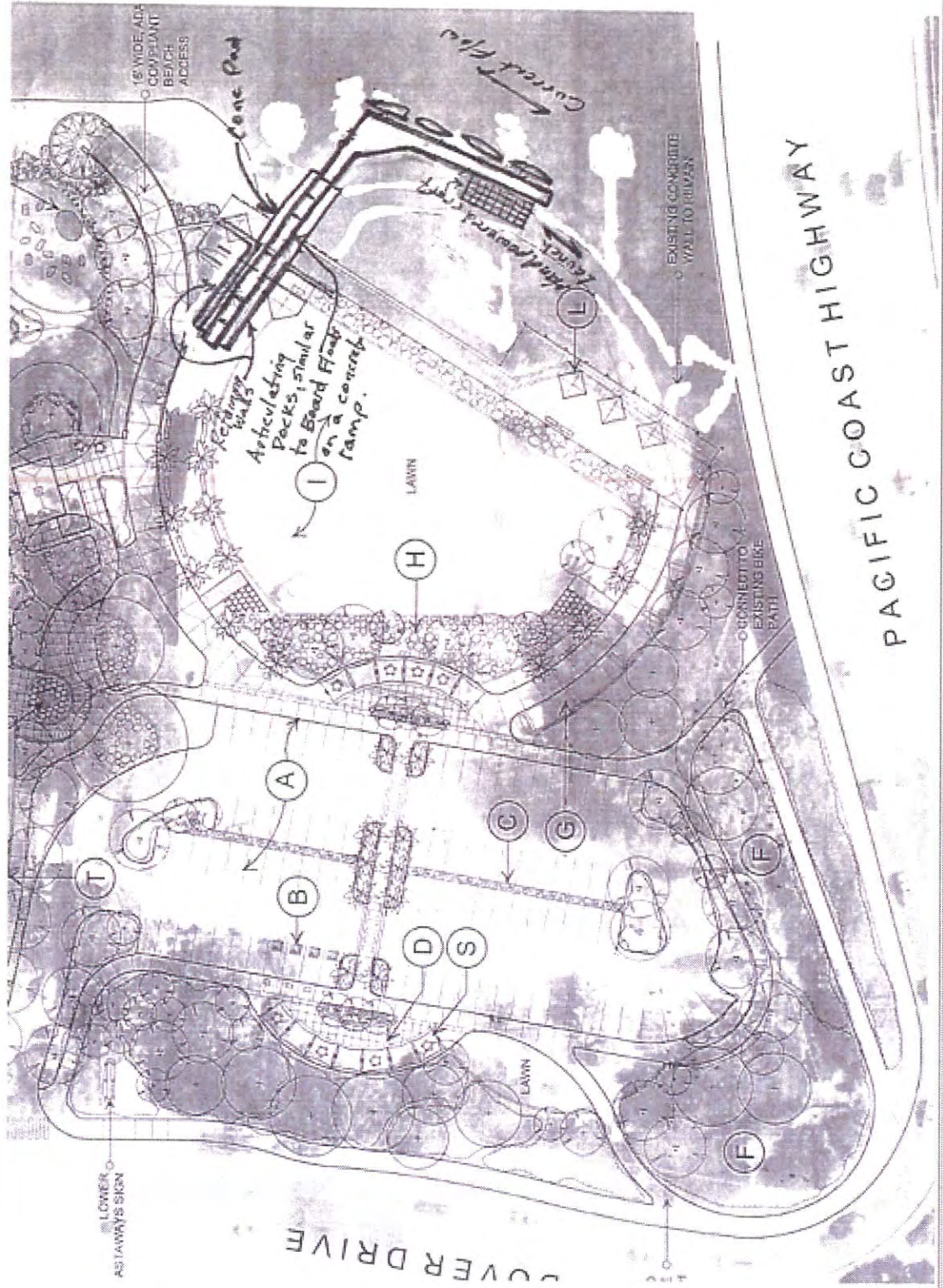
Preliminary Renderings



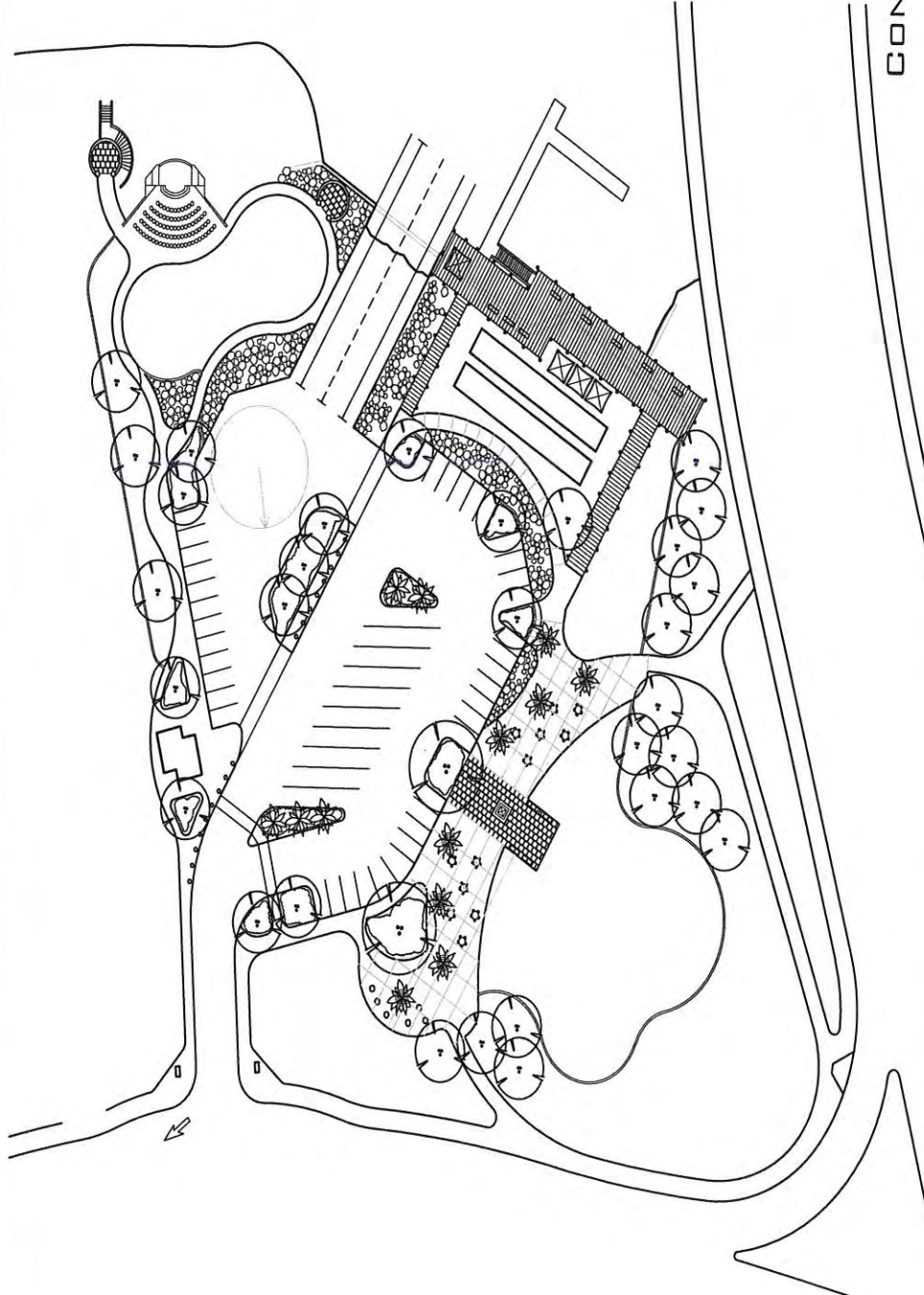
Preliminary Renderings



Preliminary Renderings – L-shaped dock



Preliminary Renderings - launch

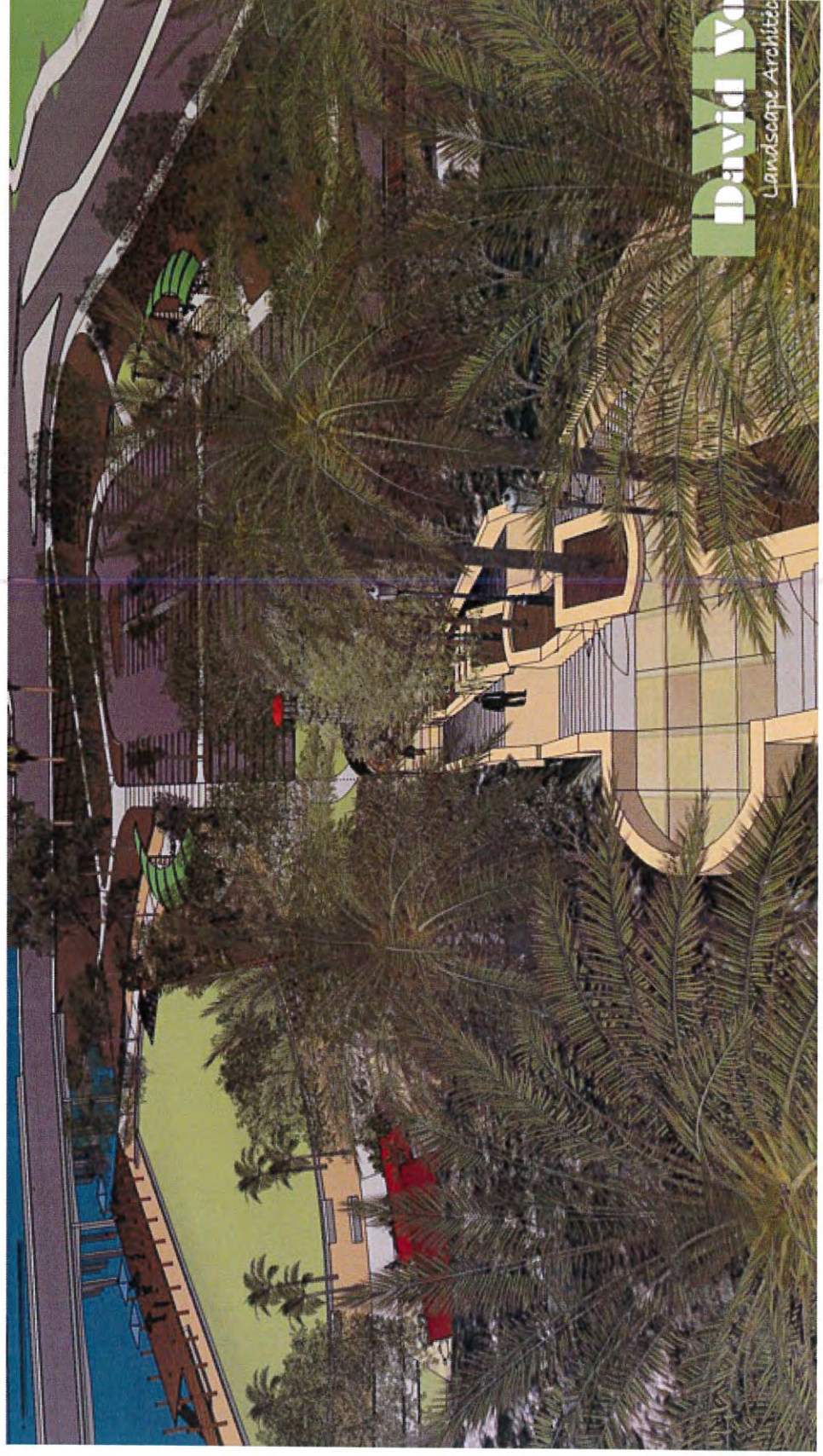


CONCEPT B

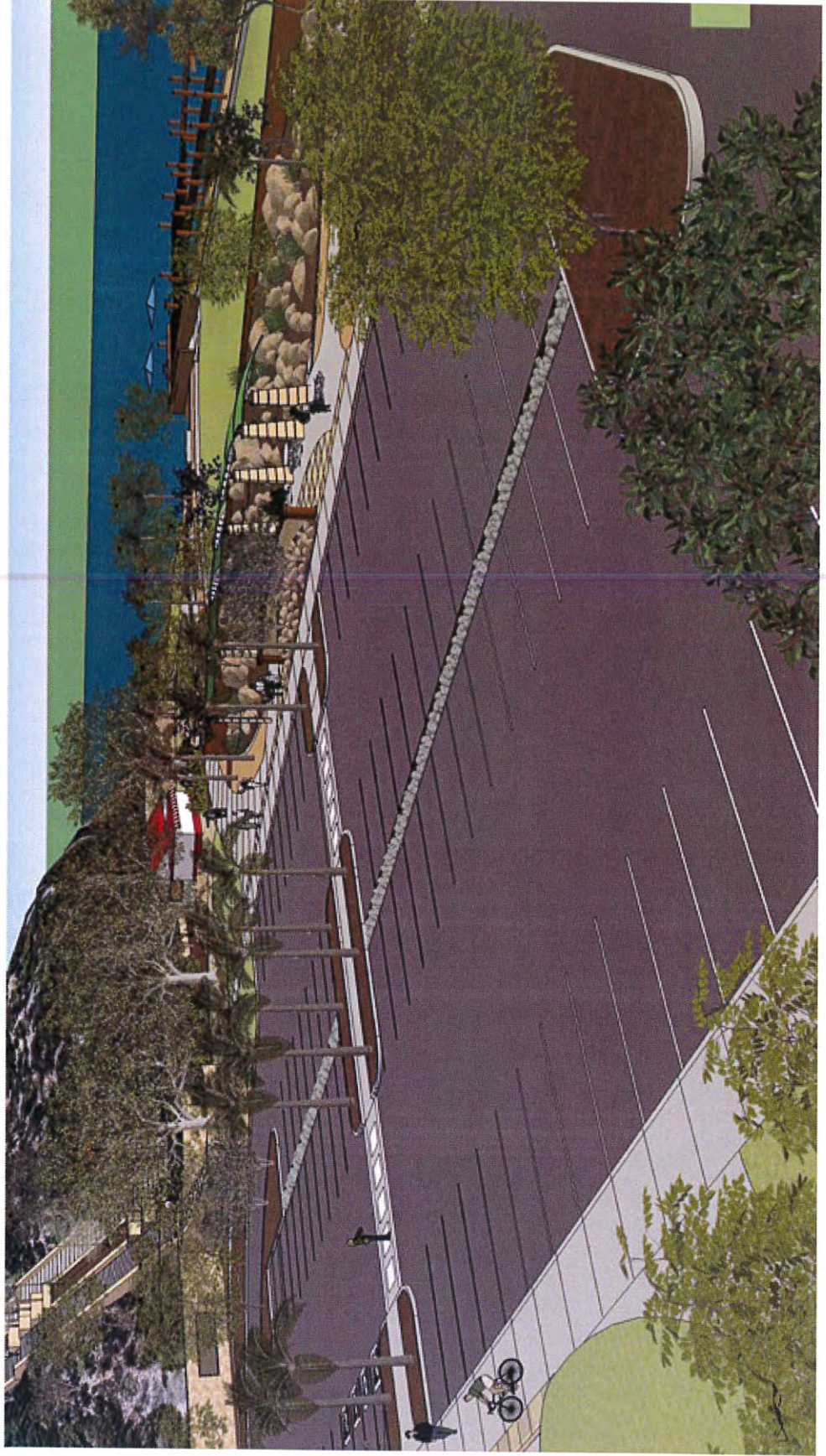


LOWER CASTAWAYS PARK
CITY OF NEWPORT BEACH

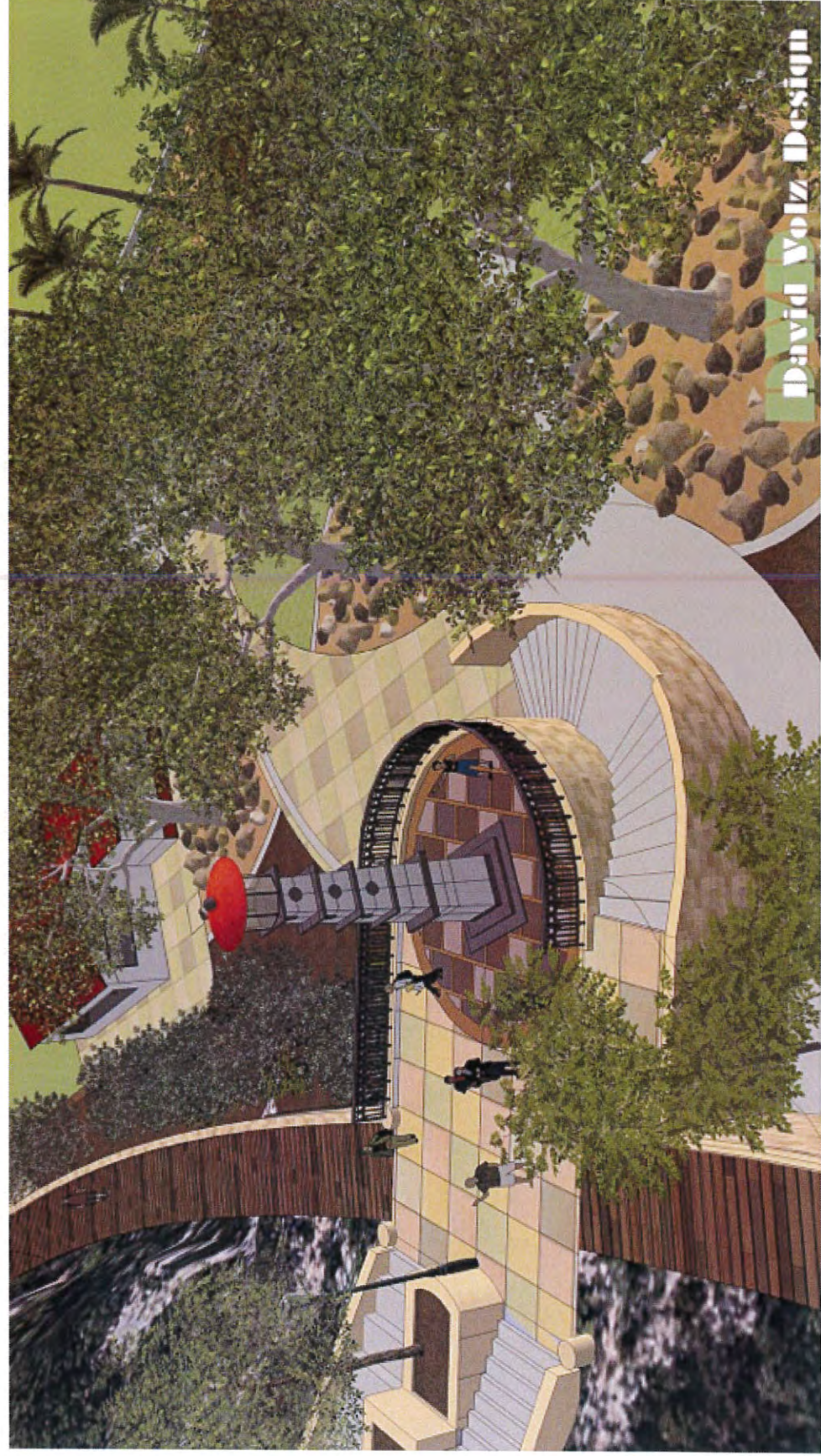
Preliminary Renderings



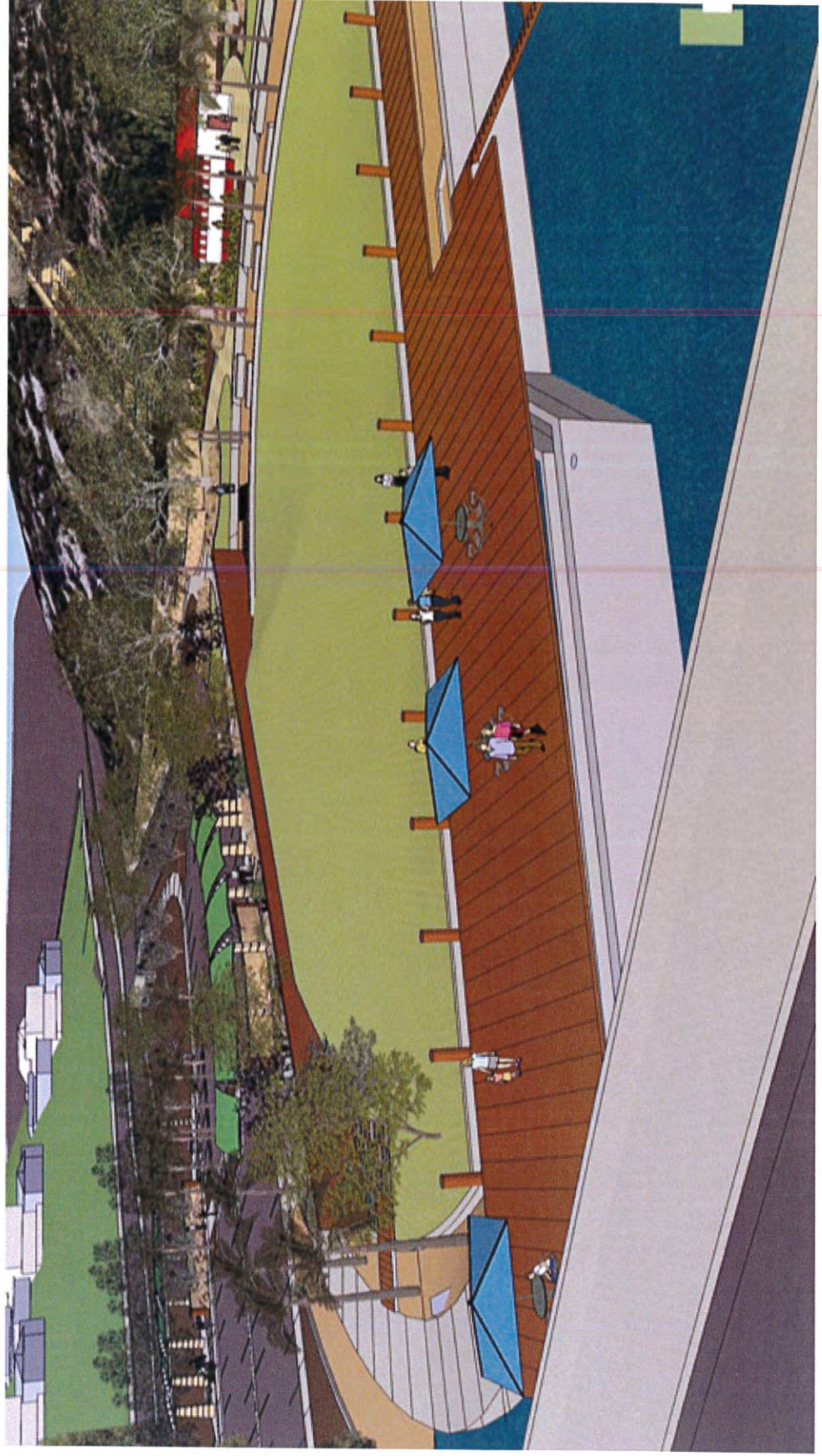
Preliminary Renderings



Preliminary Renderings



Preliminary Renderings



Preliminary Renderings



Challenges



- Coastal Commission
- MPA
- Bulkhead / Sea Wall
- Water currents
- Traffic Patterns / limitations
- Utilities
- Monitor Bayside Village Marina
- Cost - ????

Harbor Commission / Community Feedback on March 12, 2014

- Consider property as a revenue-producing asset.
- Consider property for commercial marine uses. Has this been fully vetted?
- Irvine Company influence on final plan?
- MPA concerns with DFW. Ventura meeting on April 16.

Next Steps

- Tidelands Committee Presentation –
3/19/2014
- Parks, Beaches & Recreation Commission
Presentation – 4/1/2014
- Outreach (Dave Kiff, City Council members,
press, etc.)

Q & A

Q & A



For more information contact:

Chris Miller
949-644-3043
cmiller@newportbeachca.gov
www.newportbeachca.gov



CITY OF NEWPORT BEACH

Attachment B

Parks, Beaches & Recreation Commission

Tuesday, April 1, 2014 – 6pm

City Council Chambers – 100 Civic Center Drive
Newport Beach, CA 92660

PUBLIC NOTICE

The PB&R Commission will meet on Tuesday, April 1, 2014 at 6pm to receive a report on the following item:

Lower Castaways Park – A Conceptual Review—The Harbor/PB&R Commission Ad Hoc Committee will review the current status of the Lower Castaways conceptual plan and request feedback from both the public and Commission.

Recommendation: Review and provide feedback to the Lower Castaways Ad Hoc Committee for further refinement of the conceptual plan.

For more information, please call the Recreation Office at 949-644-3151. If you are unable to attend the meeting but would like to provide comments to the Commission. Please email to recreation@newportbeachca.gov.



CITY OF NEWPORT BEACH

Parks, Beaches & Recreation Commission

Tuesday, April 1, 2014 – 6pm

City Council Chambers – 100 Civic Center Drive
Newport Beach, CA 92660

PUBLIC NOTICE

The PB&R Commission will meet on Tuesday, April 1, 2014 at 6pm to receive a report on the following item:

Lower Castaways Park – A Conceptual Review—The Harbor/PB&R Commission Ad Hoc Committee will review the current status of the Lower Castaways conceptual plan and request feedback from both the public and Commission.

Recommendation: Review and provide feedback to the Lower Castaways Ad Hoc Committee for further refinement of the conceptual plan.

For more information, please call the Recreation Office at 949-644-3151. If you are unable to attend the meeting but would like to provide comments to the Commission. Please email to recreation@newportbeachca.gov.



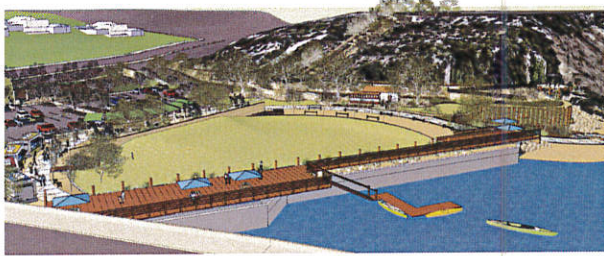
City of Newport Beach
GIS Division
March 19, 2014

- Castaways Park
- Notified Properties

*Buffer between 1000'-1500' from Castaways Park)

Castaways Notification Extent





STREET EDGE & PARKING

- A PARKING (93 TOTAL SPACES)
- B ELECTRIC VEHICLE CHARGING STATIONS
- C WATER QUALITY DESIGN FEATURE
- D BICYCLE WORK STATIONS, DRINKING FOUNTAIN, PICNIC TABLES AND BENCHES
- E MCFADDEN LANDING HISTORY WALL
- F PARK ENTRY SIGN
- G EXISTING TREES TO BE PROTECTED AND UNDERSTORY PLANTINGS TO BE RESTORED

BIKE PATH CONNECTION TO EXISTING TRAIL

WATERFRONT & EVENT LAWN

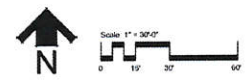
- H RESTROOM & STORAGE BUILDING
- I SHORELINE ACCESS WALKWAY - ADA COMPLIANT
- J WATERFRONT LAWN
- K CANTILEVERED DECK WITH UMBRELLAS, TABLES & SEATING
- L GANGWAY TO LAUNCHING DOCK (LOW FREEBOARD LAUNCH)
- M SAND KAYAK LAUNCHING & RETRIEVING AREA
- N OUTDOOR STAGE WITH INFORMAL SEATING
- O POSSIBLE FUTURE "OVERWATER" PIER
- P FLEXIBLE SPACE TO ACCOMMODATE COMMUNITY EVENTS (I.E. FARMERS MARKET, FOOD TRUCKS)
- Q LARGE LANDSCAPE BOULDERS

GRAND STAIRCASE & HILLSIDE

- R ELEVATED BOARDWALK & RETAINING WALL
- S BACK BAY TOWER FEATURE
- T GRAND STAIRCASE
- U WORKOUT STEPS
- V TERRACE
- W RESTORE VEGETATION ON HILLSIDE
- X VIEW DECK & GAZEBO

LOWER CASTAWAYS PARK

CITY OF NEWPORT BEACH



CONCEPT

DVD David Yonza Design
Landscape Architects and Park Planners

MARCH 2014



CITY OF
NEWPORT BEACH
PB&R Commission Staff Report

Item No.5B
April 1, 2014

TO: Parks, Beaches & Recreation Commission

FROM: Recreation Department
Laura Detweiler, Rec & Sr Services Director
949-644-3157, LDetweiler@newportbeachca.gov

TITLE: West Newport Community Center Ad Hoc Committee Appointment

RECOMMENDATION:

Staff recommends that the PB&R Commission appoint two (2) commissioners to serve on the West Newport Community Center Ad Hoc Committee to assist in seeking community input on site locations and amenities for a brand new West Newport Community Center in the western part of Newport Beach.

BACKGROUND:

At the direction of City Council, staff has been investigating potential sites for a new West Newport Community Center. Two sites have been identified (see Attachment A) and were presented for discussion at the March 11, 2014 City Council meeting.

The focus of the facility would be a multigenerational program with emphasis on wellness to promote healthy and happy lifestyles. The proposed programs may include:

Indoor Programs:

- Fitness Center (for the 50 + age group and teens with designated hours of use)
- Gymnasium – basketball, volleyball, badminton, indoor soccer, pee wee sports
- Gymnastics room for youth
- Wellness room – yoga, Zumba, tai chi, Pilates, cardio, barre, balance and mobility, strength, dance
- Art room - mixed media
- Indoor rock climbing wall
- Divisible community room for educational and brain fitness classes

Outdoor Programs:

- 4-6 lane lap pool – lap swimming, water aerobics, swim lessons
- 2-4 outdoor pickleball courts
- Outdoor walking track with outdoor fitness stations
- Community garden area
- Playground

City Council directed staff to work with the community to further define the priority for site location and types of amenities to be included and return with a recommendation.

A listing of the current Ad Hoc Committee & Liaison Appointments are provided in Attachment B.

NOTICING:

The agenda item has been noticed according to the Brown Act (72 hours in advance of the meeting at which the PB&R Commission considers the item).

Attachment: A. Potential Community Center Sites
B. Ad Hoc Committee & Liaison Appointments

West Newport Community Center Concept

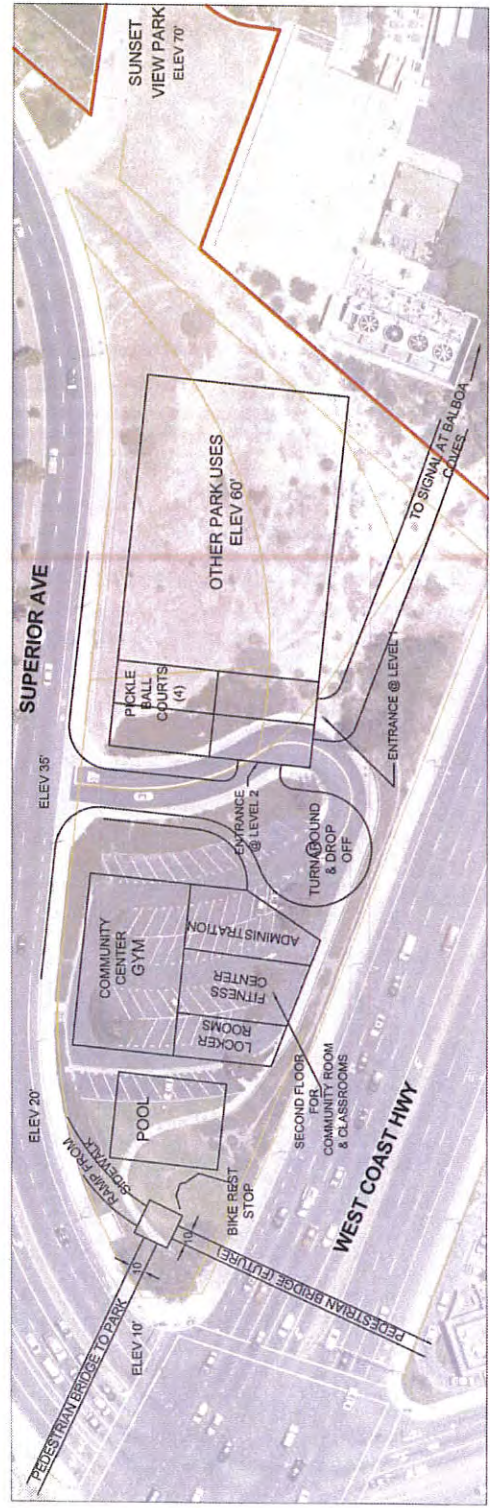
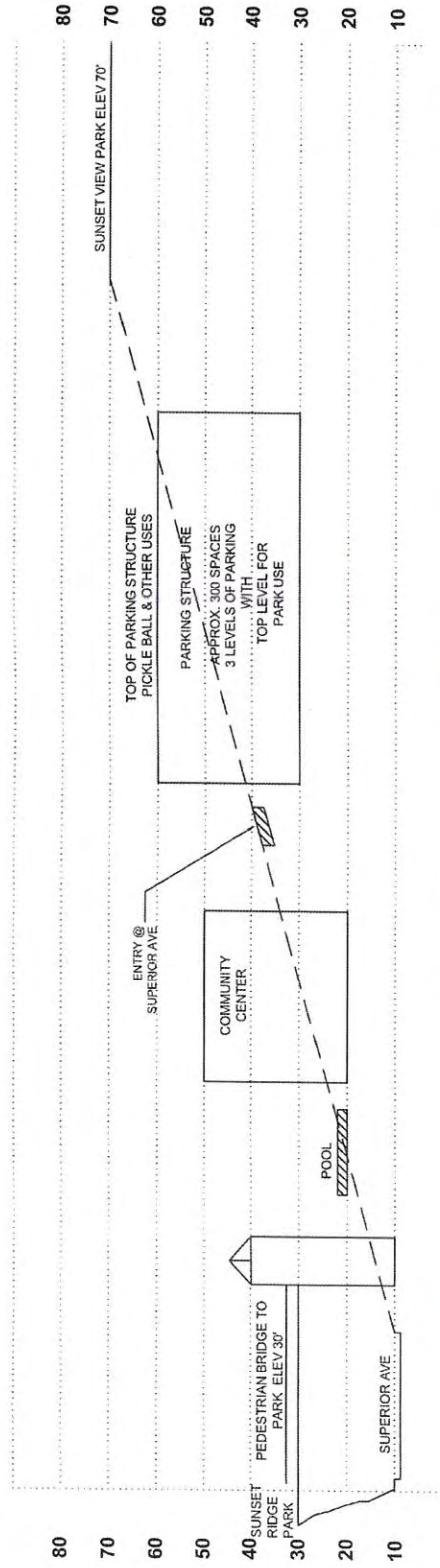


EXHIBIT 1 - WEST NEWPORT COMMUNITY CENTER @ SUPERIOR AVE/WEST COAST HWY

West Newport Community Center Concept

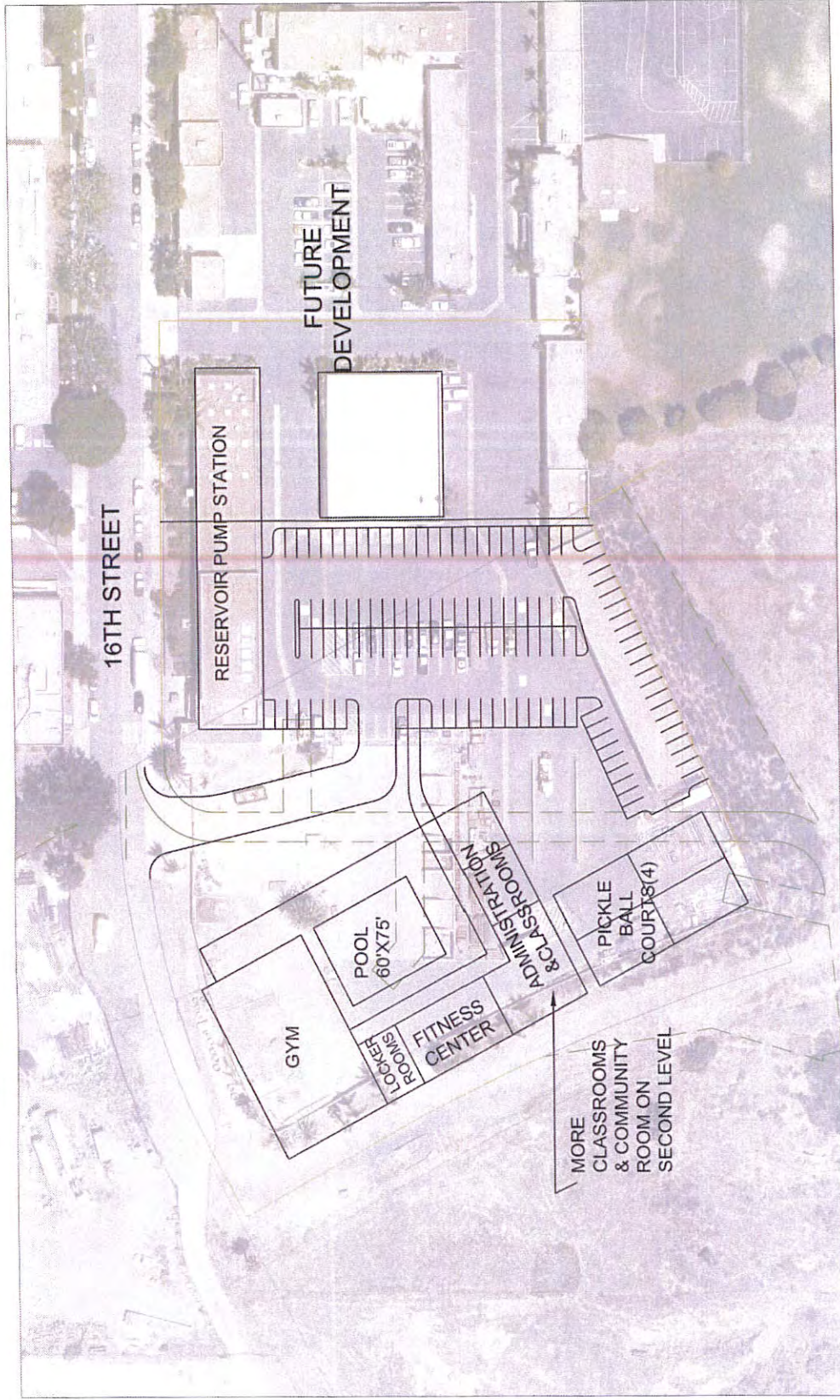


EXHIBIT 2- WEST NEWPORT COMMUNITY CENTER 16TH ST

PB&R COMMISSION

Ad Hoc Committee & Liaison Appointments

Community Service Award

Roy Englebrecht
Kathy Hamilton
Walt Howald

Council Policy G-1

Kathy Hamilton
Walt Howald

Lower Castaways Park Design

Kathy Hamilton
Marie Marston

Street Tree Designation List

Tom Anderson
Roy Englebrecht

West Newport Community Center

West Side Dogs Off Leash

Ron Cole
Marie Marston

Liaison Assignments

Youth Sports Commission Member Organization

Tom Anderson
Roy Englebrecht

Blackball (Surfing Regulations Working Group)

Ron Cole
Laird Hayes
Marie Marston