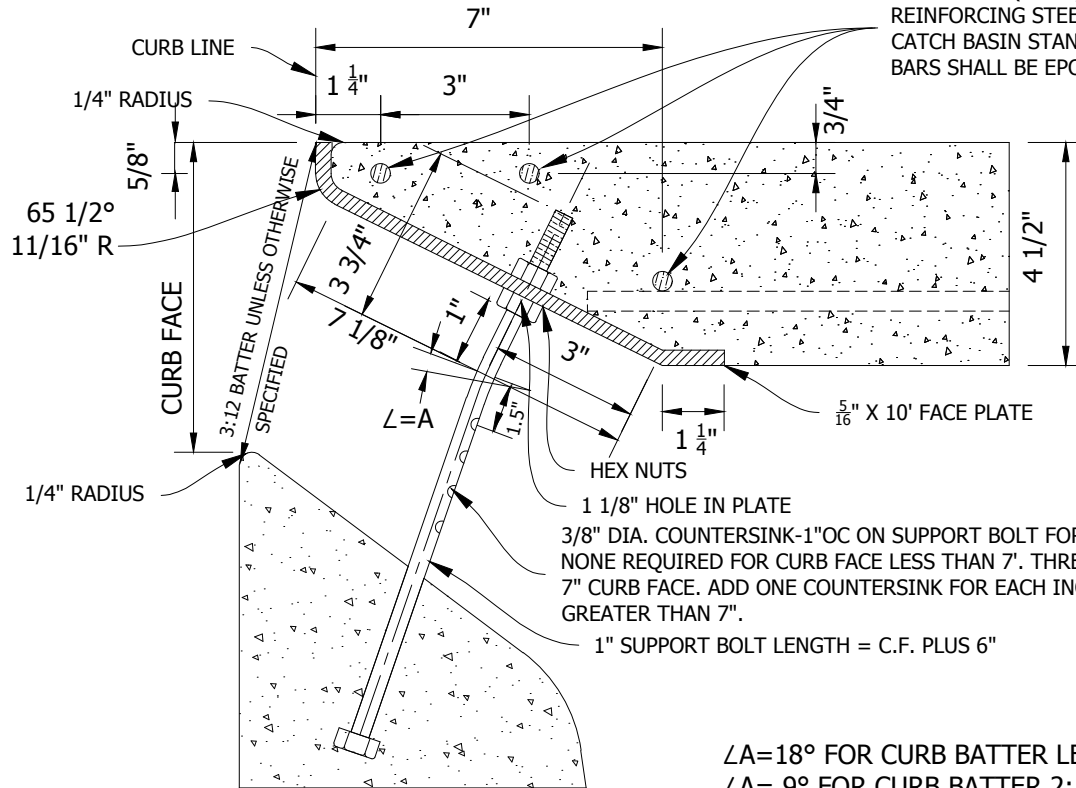


# SUPPORT BOLT AND FACE PLATE (4 1/2" TOP SLAB)

3-#4 BARS X(W+6") IN ADDITION TO REINFORCING STEEL PER APPLICABLE CATCH BASIN STANDARD PLAN. STEEL BARS SHALL BE EPOXY-COATED.

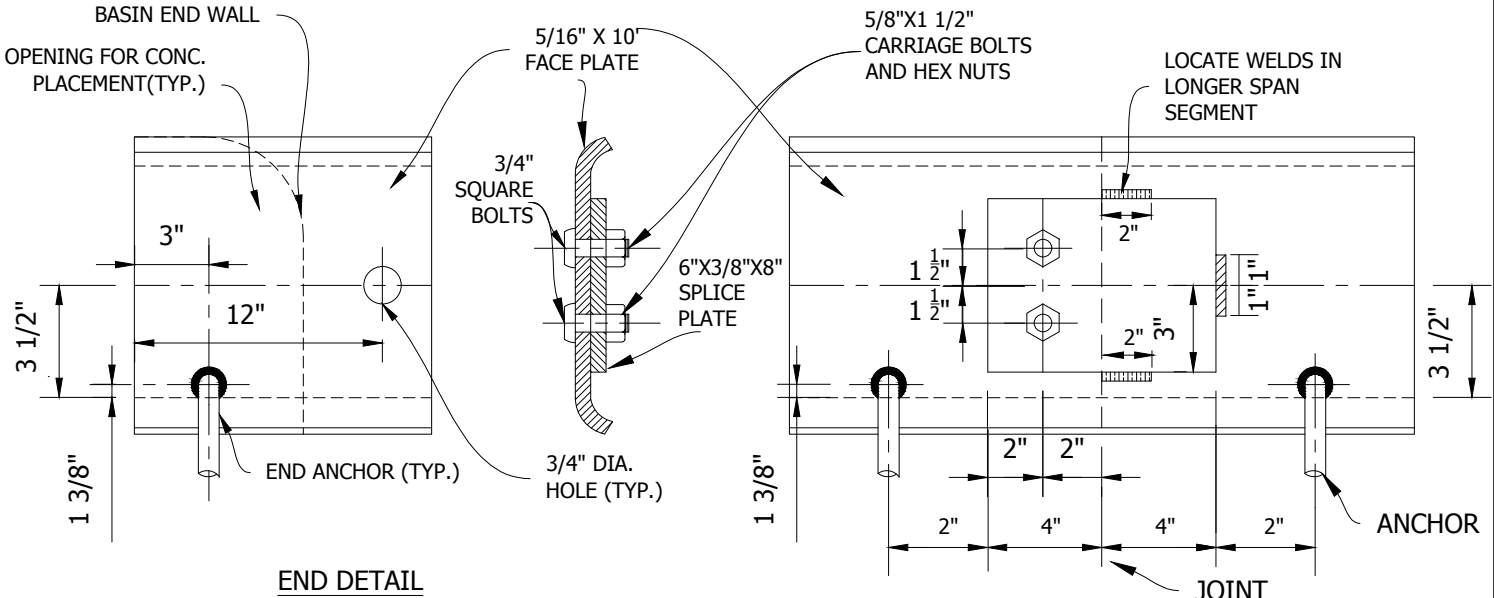


HEX NUTS  
1 1/8" HOLE IN PLATE  
3/8" DIA. COUNTERSINK-1" OC ON SUPPORT BOLT FOR SET SCREW.  
NONE REQUIRED FOR CURB FACE LESS THAN 7". THREE REQUIRED FOR 7" CURB FACE. ADD ONE COUNTERSINK FOR EACH INCH OF CURB FACE GREATER THAN 7".  
1" SUPPORT BOLT LENGTH = C.F. PLUS 6"

LA=18° FOR CURB BATTER LESS THAN 2:12  
LA= 9° FOR CURB BATTER 2:12 THRU 4:12  
LA= AS SHOWN ON PLANS FOR ALL OTHER CURB BATTER.

INTERIOR FACE OF CATCH BASIN END WALL

OPENING FOR CONC. PLACEMENT(TYP.)




END DETAIL

SPLICE DETAIL

ADOPTED FROM APWA STANDARD PLAN 310-2

FORMER CITY STANDARD PLAN NUMBER (2004 EDITION): STD 316-L-A

APP. 	51568	11/24/2020			
CITY ENGINEER	RCE	DATE	NO.	DATE	DESCRIPTION OF REVISIONS

CITY OF NEWPORT BEACH DEPARTMENT OF PUBLIC WORKS

## CATCH BASIN FACE PLATE ASSEMBLY AND PROTECTION BAR FOR 4 1/2" TOP SLAB

STANDARD DRAWING NO.

305-A

SHEET 1 OF 1

DRAWN: M. ELIAS

DATE: 11/3/2020