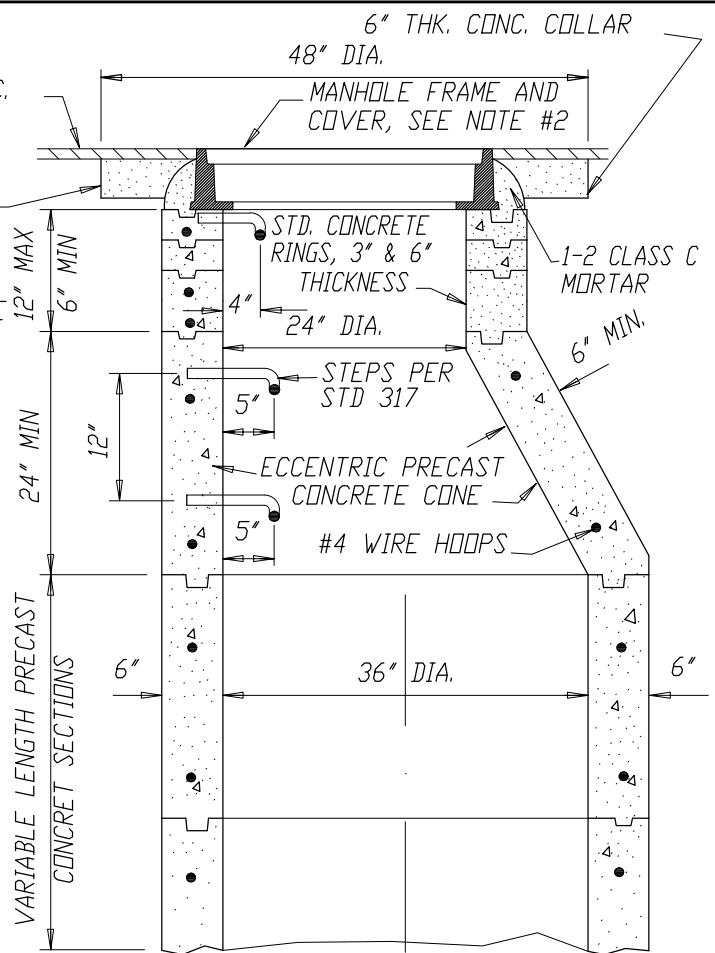


VERTICAL SECTION OF REINFORCED CONCRETE ECCENTRIC MANHOLE SHAFT

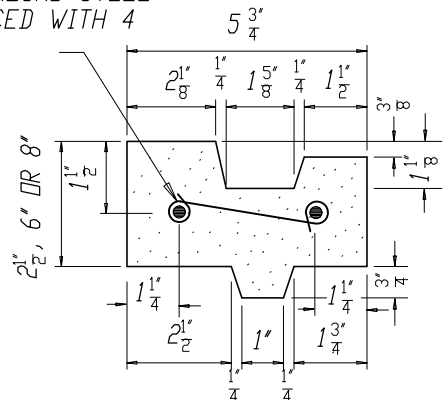


VERTICAL SECTION OF PLAIN CONCRETE ECCENTRIC MANHOLE SHAFT

2-1/2" RINGS SHALL BE REINFORCED WITH TWO 1/4" ROUND STEEL HOOPS; 6 INCH AND 8 INCH RINGS SHALL BE REINFORCED WITH 4 HOOPS, TIED WITH NO. 14 A.S. & W. GA. WIRE 8" D.C.

NOTES:

1. ALL JOINTS SHALL BE FILLED WITH 1-2 CLASS C MORTAR AND NEATLY POINTED OR WIPED ON INSIDE OF SHAFT.
2. MANHOLE FRAME AND COVER PER STD 318 WITH LETTER "D" IN CENTER OF COVER SURFACE OF LETTER SHALL FLUSH WITH FINISHED SURFACE OF COVER.
3. PRESSURE MANHOLE FRAME AND COVER SHALL BE ALHAMBRA FOUNDRY A-1500 OR APPROVED EQUAL, WITH LETTER "D" IN CENTER OF COVER, SURFACE OF LETTER SHALL FLUSH WITH FINISHED SURFACE OF COVER.
4. ECCENTRIC MANHOLE SHAFT, REDUCER AND RINGS MAY BE PLAIN CONCRETE. FOR UNREINFORCED SECTIONS, THE MINIMUM THICKNESS SHALL BE 6 INCHES.
5. TOP STEP SHALL BE PLACED DIRECTLY BENEATH THE MANHOLE COVER FRAME EXCEPT WHERE SHOWN OTHERWISE, SPACING OF STEPS IN SHAFT SHALL BE 12 INCHES ON CENTER. SEE STD 317.



SECTION OF R.C. RING

ADOPTED FROM LACDPW STD. DWG. NO. 3029-0

REF. STD 317 AND 318

APP. *James M. Hinkle* 51568 11/24/2020  
CITY ENGINEER RCE DATE

NO.	DATE	DESCRIPTION OF REVISIONS

**CITY OF NEWPORT BEACH DEPARTMENT OF PUBLIC WORKS**

DRAWN: M. ELIAS  
DATE: 11/3/2020

**CONCRETE RINGS, REDUCER AND SHAFT FOR SD MANHOLE**

STANDARD DRAWING NO.  
**322**  
SHEET 1 OF 1

FORMER CITY STANDARD PLAN NUMBER (2004 EDITION): STD 309-L