

Utility Undergrounding District Nos. 22, 111 and 116



Before

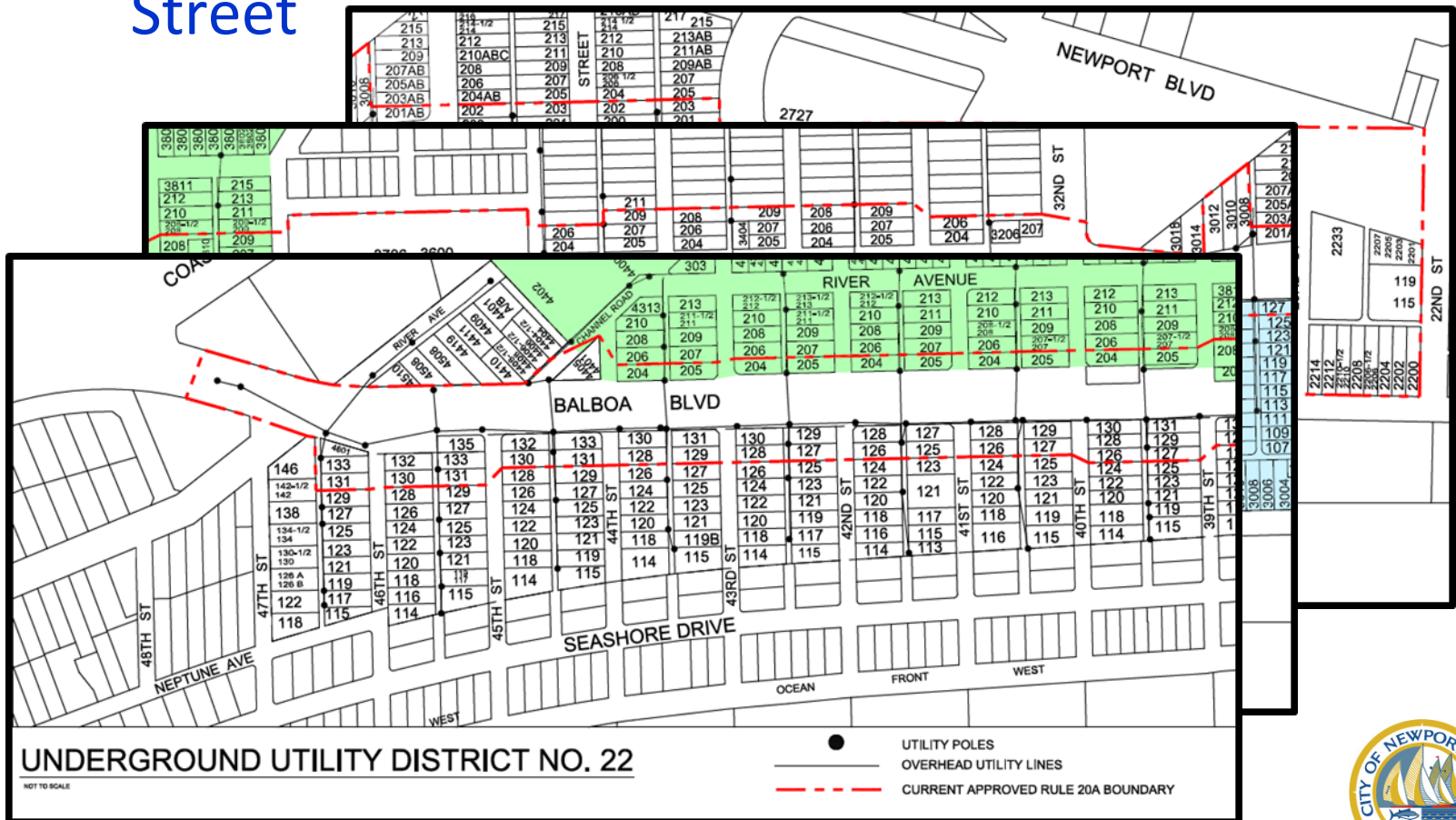


After

Description of District

❖ District No. 22

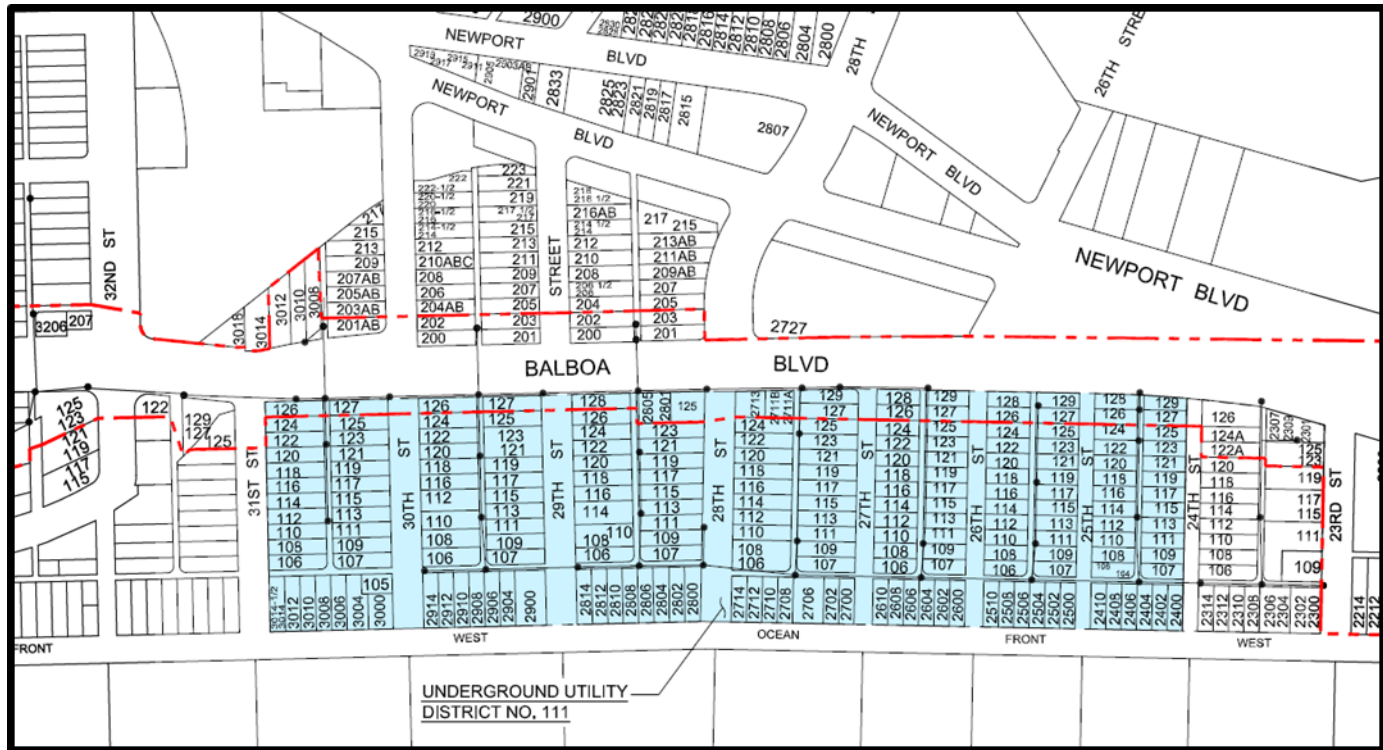
- ◆ Balboa Boulevard from Coast Highway to 22nd Street



Description of District

❖ Boundary Description

◆ District No. 111



Background

- ❖ The City may use Rule 20A funds to underground electric utility lines in the public right of way. Rule 20A undergrounding allocations are collected from all SCE ratepayers (not just those in the undergrounding district) as authorized by the CPUC. To qualify, a project must meet one or more of the following:
 - ◆ 1. Undergrounding will avoid or eliminate an unusually heavy concentration of overhead electric facilities
 - ◆ 2. The street is extensively used by the general public and carries a heavy volume of pedestrian or vehicular traffic.
 - ◆ 3. The street adjoins or passes through a civic or scenic area.
 - ◆ 4. The street is an arterial or major collector road identified on the General Plan.
- ❖ Under Rule 20B, local overhead utilities may be placed underground through an assessment district paid for by property owners



Typical Rule 20B Schedule

- ❖ TOTAL SCHEDULE: 6 – 8 years
- ❖ Property Owner submits request for undergrounding of utilities
- ❖ City prepares preliminary boundary map and transmits to utility companies for Rough Order of Magnitude (ROM) cost estimate: 3 months
- ❖ When ROM has been submitted, City prepares petition package with estimated costs and sends to Property Owner proponents: 1 month
- ❖ Property Owners gather signatures on petition, need 60% of owners to sign: 6 months



Typical Rule 20B Schedule

- ❖ City conducts petition sufficiency verification: **1 month**
- ❖ If 60% of owners have signed petition, item is placed on Council agenda to approve advancing costs for utility design: **1 month**
- ❖ City requests SCE design: **2 – 3 years**
- ❖ Once SCE design is complete, AT&T and Cable design their systems: **1 year**
- ❖ When design is complete, project is released for construction bids: **3-6 months**
- ❖ Assessment District formation begins, City orders preparation of Engineer's Report: **1 month**

Typical Rule 20B Schedule

- ❖ Assessment Engineer prepares Engineer's Report: **3 months**
- ❖ City approves Engineer's Report, conducts public hearing and tabulates ballots: **3 months**
- ❖ Cash Collection period: **1 month**
- ❖ Bonds are issued: **1 month**
- ❖ Construction: **12-18 months**
- ❖ Private Conversion begins

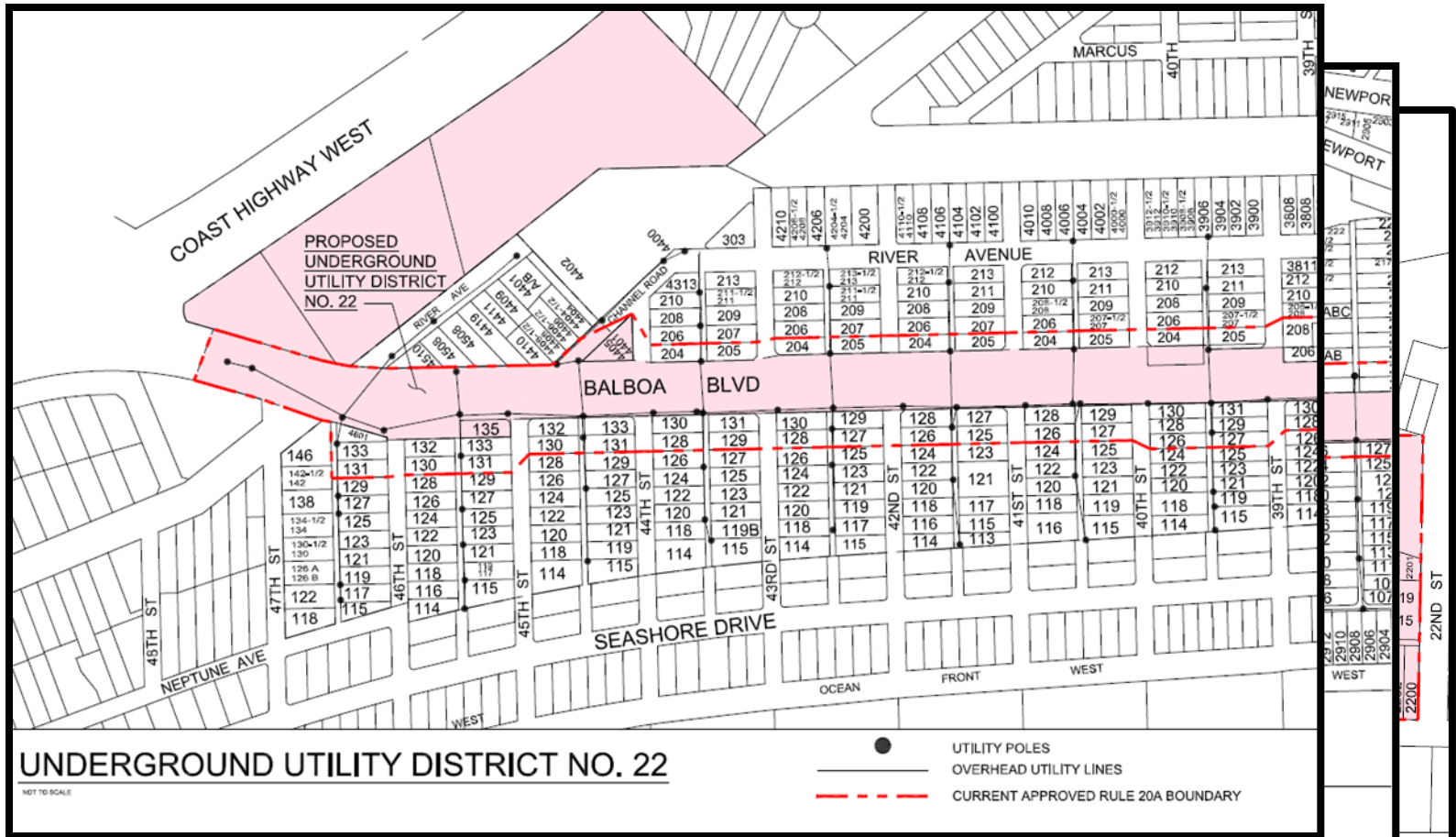


Current Status of Rule 20A

- ❖ In design on Rule 20A project (about 75% complete)
- ❖ City's goal to underground Balboa Boulevard and not alleys
- ❖ Span guys across Balboa Boulevard to minimize costs
- ❖ Avoid costly steel poles where possible (City/SCE staff goal)

New Rule 20A Boundary

Undergrounding of Utilities



Recent SCE Infrastructure Plans

- ❖ SCE continues to upgrade and expand their electricity-distribution network
- ❖ SCE has informed the City that the existing Richards 4kV circuit is being upgraded to 12kV to improve reliability in the area
- ❖ SCE is scheduled to eliminate the Costa Mesa Substation, which the Richards 4kV is served from. In order to eliminate the substation, all 4kV circuits fed from this substation need to be cutover to 12kV
- ❖ The Richards 4kV covers areas from 47th street to 32nd street
- ❖ The upgrade is scheduled to take place late 2015

Proposed Changes to AD 111 and 116

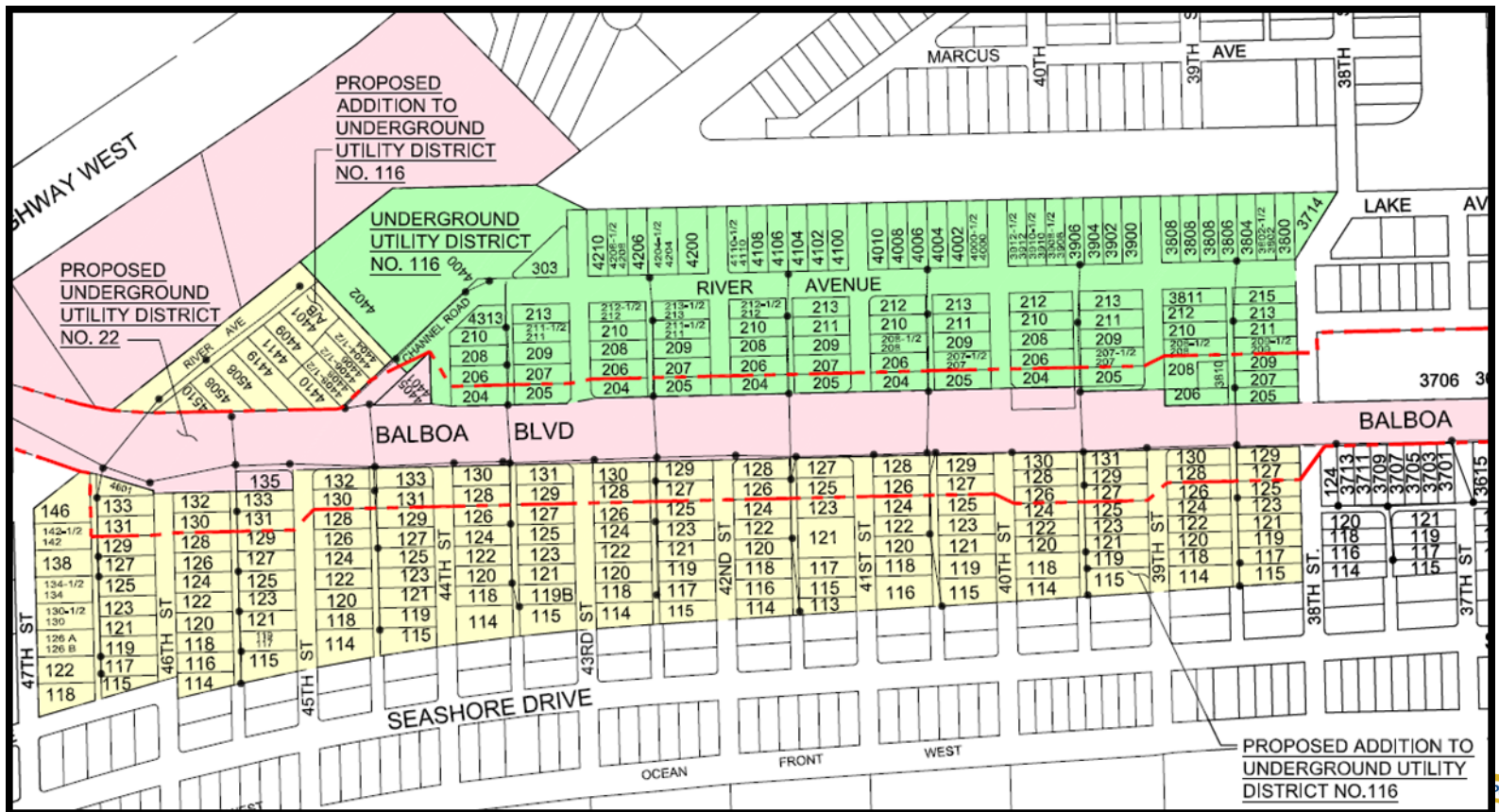
- ❖ In an effort to reduce costs to the residents:
 - ◆ Goal to eliminate guying issues or expensive steel poles
 - ◆ City and SCE suggest expanding districts to include both sides of Balboa Boulevard
 - ◆ SCE 4kV to 12kV conversion necessitates accelerated district formation, which will eliminate procedural steps



Expanded District

❖ Boundary Description

◆ District No. 116



Accelerated Rule 20B Schedule

- ❖ TOTAL SCHEDULE: 2.5 – 4 years
- ❖ Assessment District formation begins, City orders preparation of Engineer's Report: 1 month
- ❖ City approves Engineer's Report, conducts public hearing and tabulates ballots. If District approved, City advances costs for utility design: 3 months
- ❖ City requests SCE, AT&T and Cable design: 18 months
- ❖ When design is complete, project is released for construction bids: 3 months



Accelerated Rule 20B Schedule

- ❖ Cash Collection period: 1 month
- ❖ Bonds are issued: 1 month
- ❖ Construction: 12-18 months
- ❖ Private Conversion begins



Private Underground Conversion

- ❖ Performed by the property owner

- ❖ Typical conversion cost
 - ◆ ~\$2,500 to \$4,500 for each home or connection
 - ◆ Cost will depend on distance and if electrical panel must be converted

- ❖ Find a good contractor
 - ◆ Ask for references

Accelerated 20B Advantages

- ❖ Combined with 20A, efficiencies in construction
- ❖ Timeline for completion
 - ◆ No petition process required
 - ◆ In construction in approximately 2 years
- ❖ Less costly to residents if done with Rule 20A
 - ◆ AD 111 petition estimated cost - \$17,300
 - ◆ AD 116 petition estimated cost - \$21,000
- ❖ Reduces the utility poles in alleyways along Balboa Boulevard
- ❖ Reduces the need for guy wires across Balboa Boulevard

