

IMPLEMENTATION EXAMPLE | PLACENTIA

What we heard...

Potential Solutions



Improve bicycle safety

- Widen sidewalks
- Enhance crosswalks
- Bulbouts



Improve bicycle safety

- Sharrows - Monrovia Avenue, 16th Street, 15th Street
- Painted lanes



Address high speeds on roadways

- Explore vehicle improvements
- Landscape medians



Streetscape beautification

- Additional landscaping and amenities
- Improved maintenance program



Increased shade and more street trees

- Install low water use canopy trees



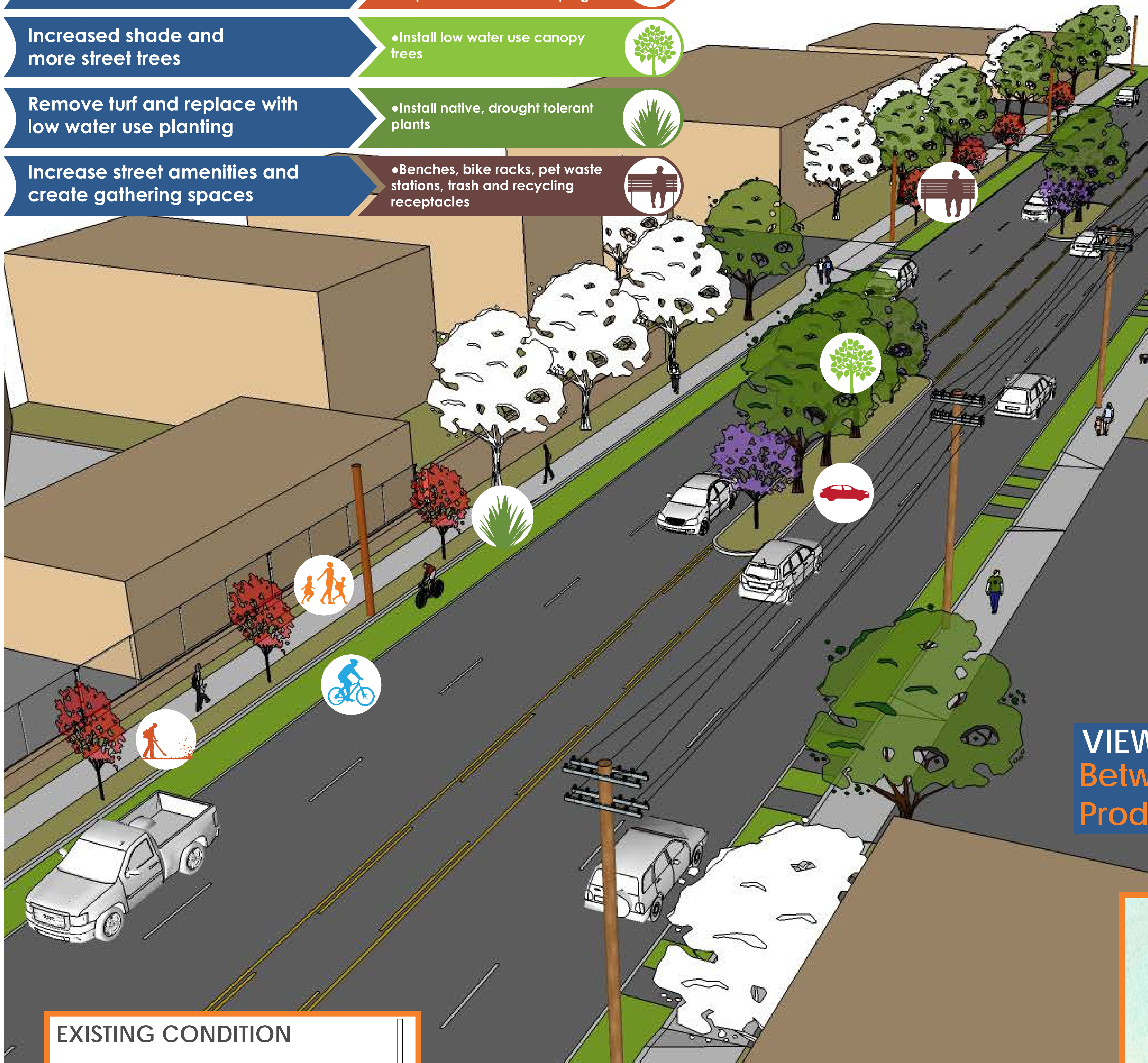
Remove turf and replace with low water use planting

- Install native, drought tolerant plants



Increase street amenities and create gathering spaces

- Benches, bike racks, pet waste stations, trash and recycling receptacles



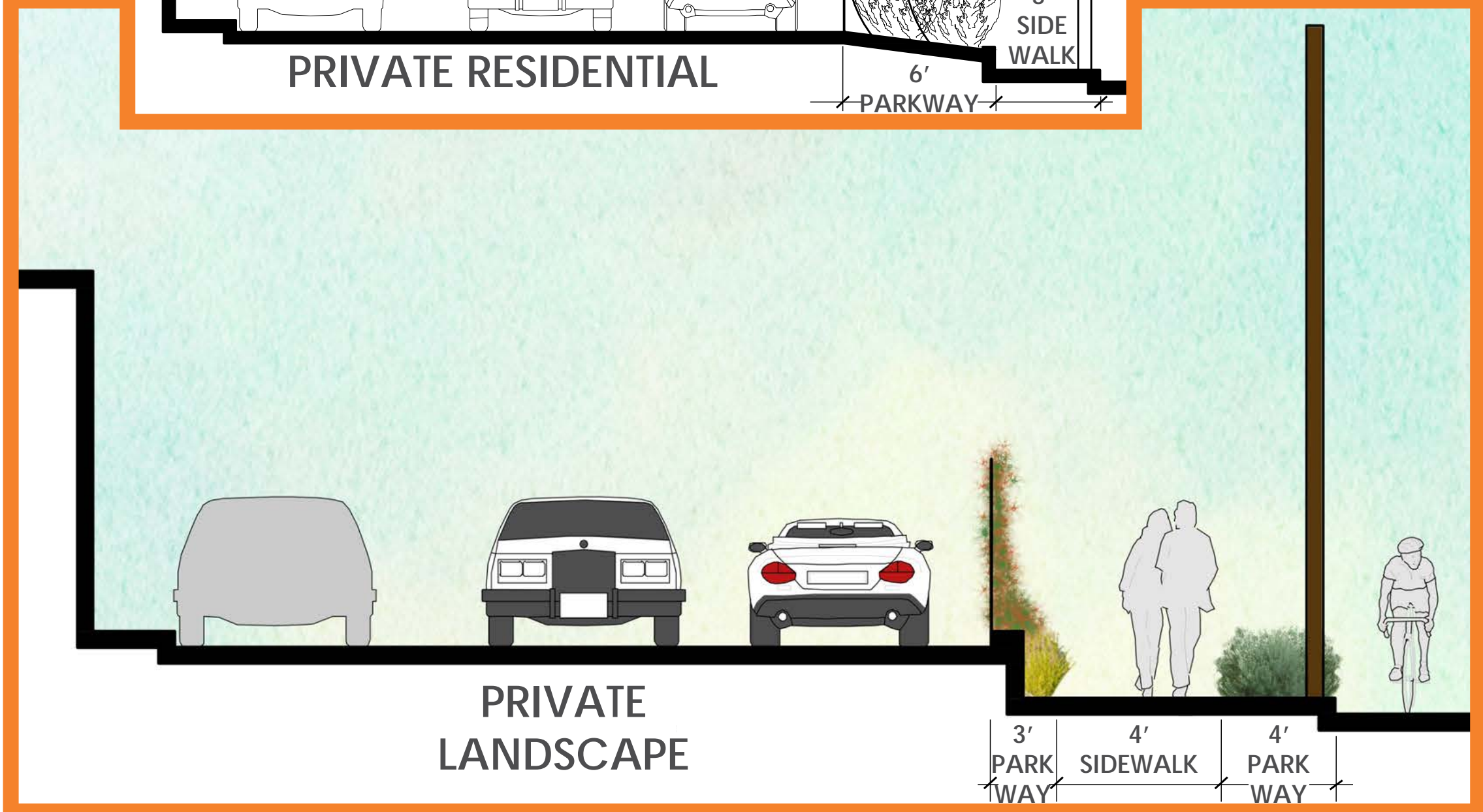
EXISTING CONDITION PHOTOS

VIEW
Between 15th Street and
Production Place Looking North

EXISTING CONDITION

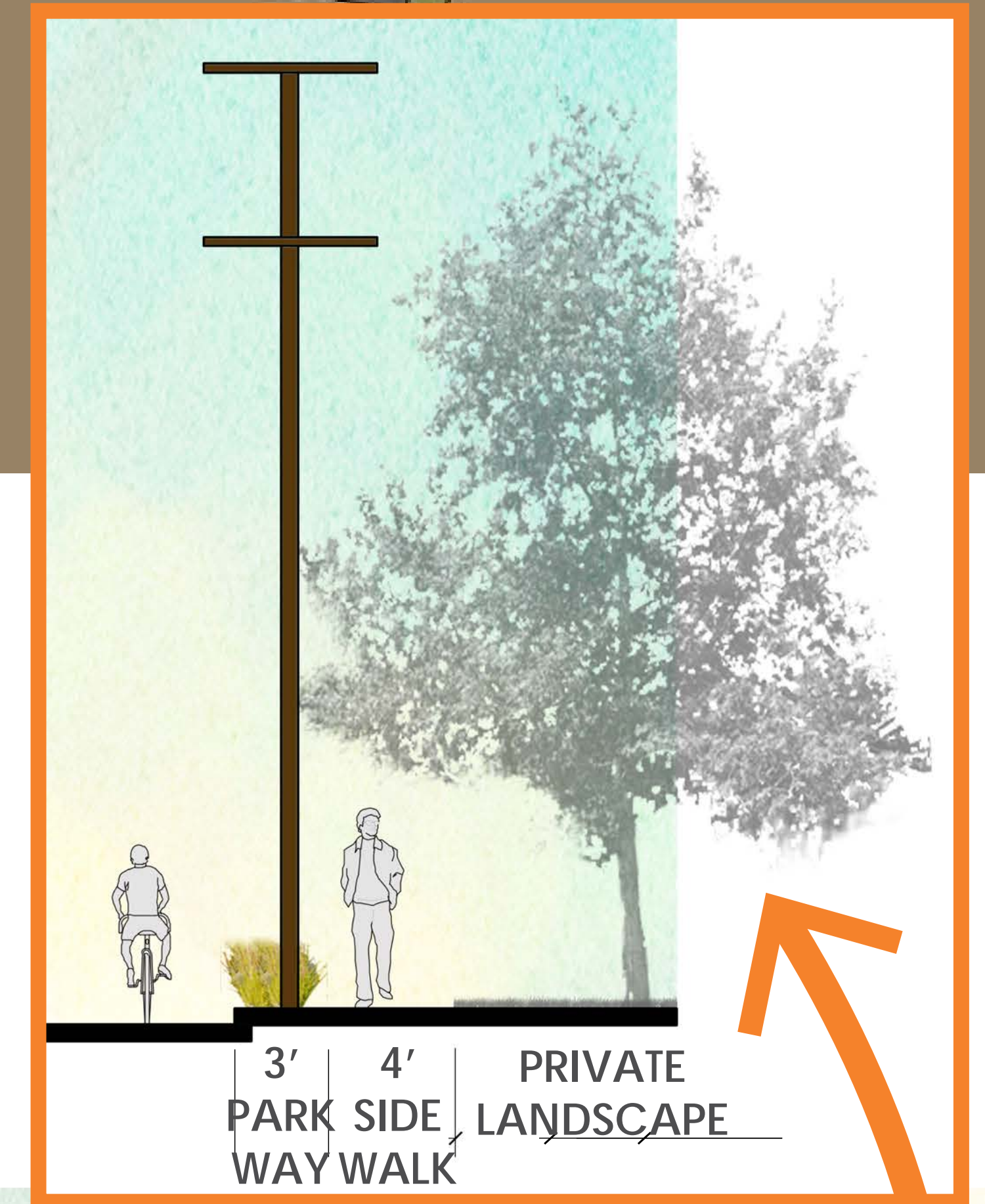


PRIVATE RESIDENTIAL

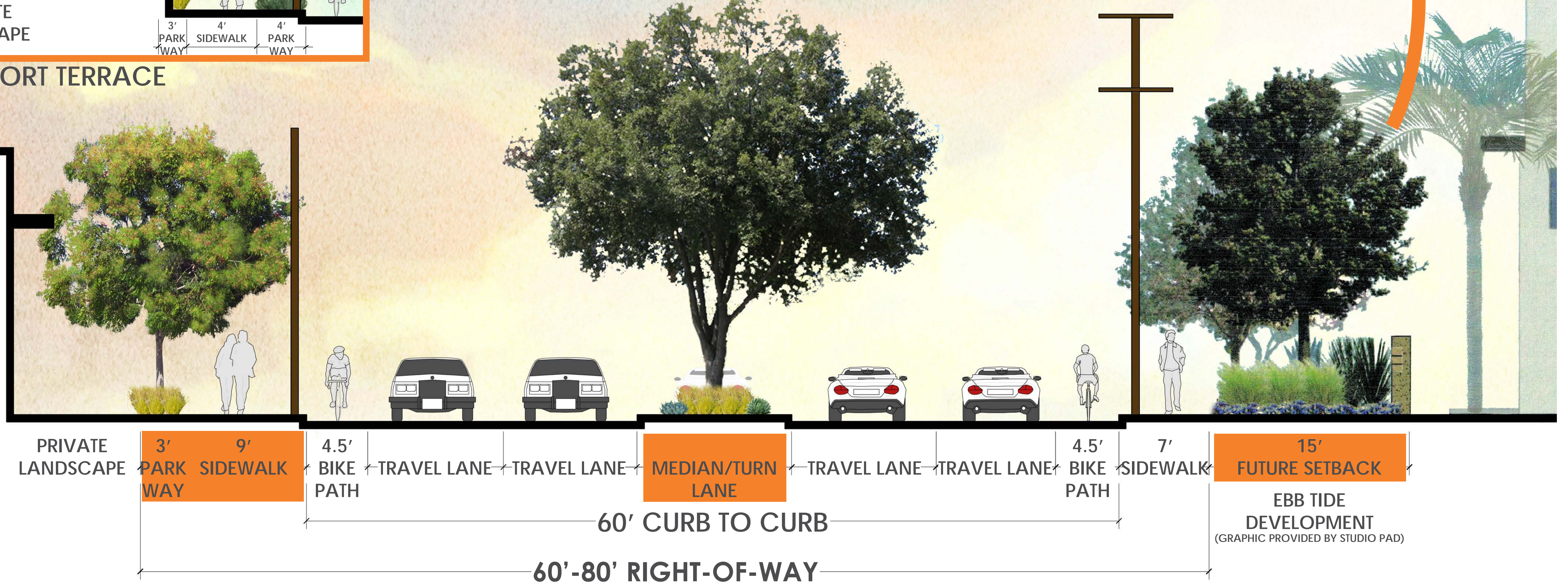


PRIVATE LANDSCAPE

ADJACENT TO NEWPORT TERRACE



ALTERNATE CONDITION



PRIVATE LANDSCAPE

3' PARKWAY

9' SIDEWALK

4.5' BIKE PATH

TRAVEL LANE

TRAVEL LANE

MEDIAN/TURN LANE

TRAVEL LANE

TRAVEL LANE

4.5' BIKE PATH

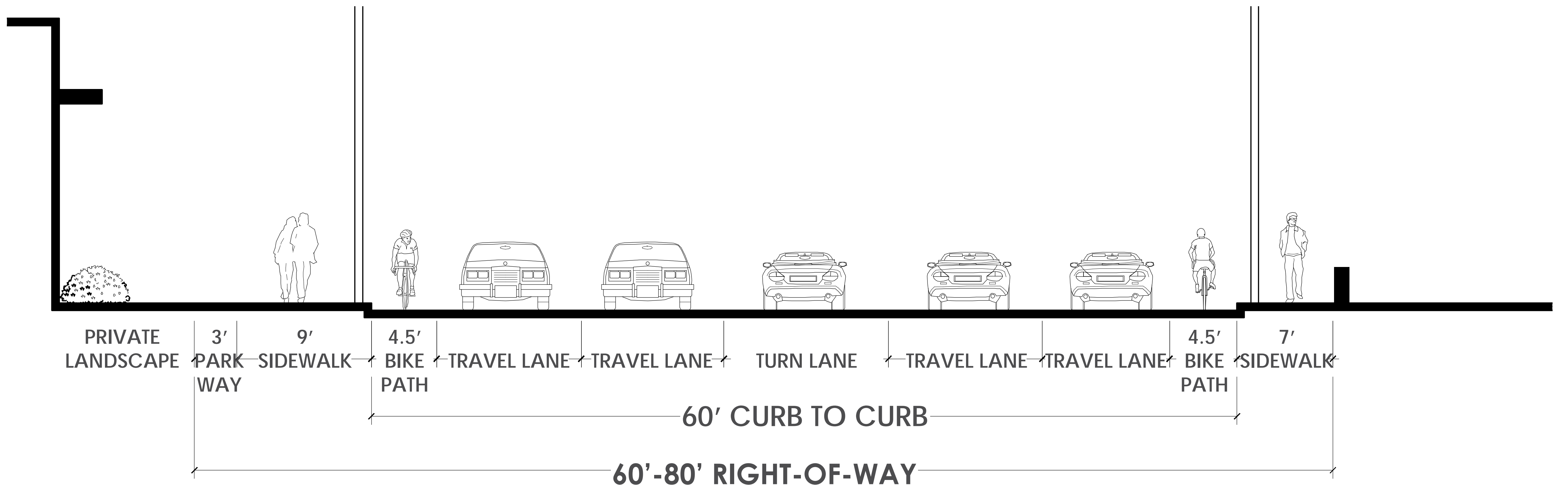
7' SIDEWALK

15' FUTURE SETBACK

60' CURB TO CURB

60'-80' RIGHT-OF-WAY

EBB TIDE DEVELOPMENT
(GRAPHIC PROVIDED BY STUDIO PAD)



PRIVATE LANDSCAPE

3' PARKWAY

9' SIDEWALK

4.5' BIKE PATH

TRAVEL LANE

TRAVEL LANE

TURN LANE

TRAVEL LANE

TRAVEL LANE

4.5' BIKE PATH

7' SIDEWALK

60' CURB TO CURB

60'-80' RIGHT-OF-WAY