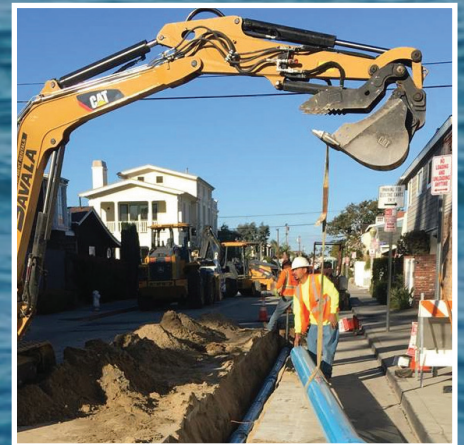
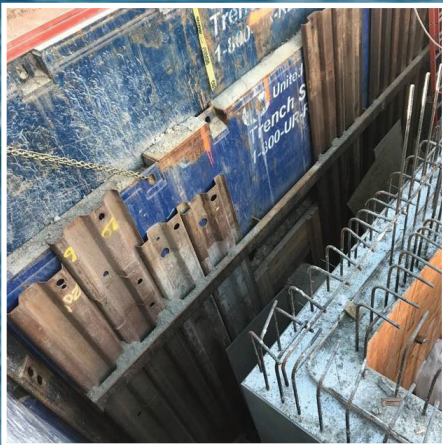
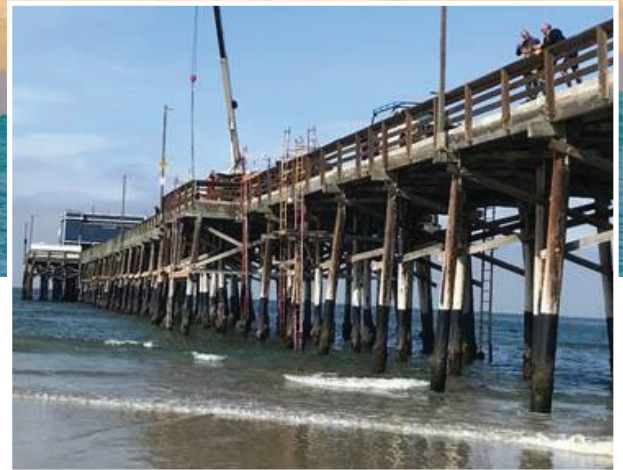




# City of Newport Beach



**Deputy Public Works Director  
City Engineer**



# City of Newport Beach

The City of Newport Beach is one of Southern California's most picturesque and popular beach communities. Located in the center of coastal Orange County – with Los Angeles to the north and San Diego to the south – Newport Beach offers one of the finest climates in the Nation. The City is also known for its fine residential neighborhoods, strong business community, quality school system, vast recreational opportunities, beautiful beaches, excellent dining, and world class shopping districts.

The City has a permanent population of over 86,000 residents. During the summer months, the City population can grow to more than 200,000 with daily visitors. In the heart of the City is Newport Bay, where more than 4,500 boats are docked within the harbor. The Bay and City's eight miles of ocean beaches offer outstanding fishing, swimming, surfing, and aquatic sports activities. Area schools, including the University of California, Irvine (just outside the City's border), are among the best in California. Eight other colleges are within a 30-mile radius.

A few community attractions include Crystal Cove State Park, the historic Balboa Pavilion, two ocean piers, white sandy beaches, extensive bikeways, Fashion Island/Newport Center, the Resort at Pelican Hill, plus many fine dining establishments.

## City Government

As a charter city, Newport Beach is governed by a seven member City Council, operating under a council/manager form of government with a proposed 2018-19 operating budget of approximately \$291 million. The City employs 726 full-time employees and over 450 part-time and seasonal employees. Newport Beach has a history of impressive financial strength with current General Fund reserves exceeding \$47 million and currently holds an AAA implied General Obligation rating with each of three major rating agencies.

## Public Works Department

The City of Newport Beach is committed to providing and maintaining essential and high quality public infrastructure, beaches and facilities that serve as the foundation of the community. The Public Works Department is responsible for overseeing and managing a comprehensive and ambitious infrastructure improvement and maintenance program

designed to meet the current and future needs of the community, enhance the quality of life of the City's residents and visitors, as well as to protect the City's physical and natural assets. Public Works has an operating budget exceeding \$39 million and a Capital Improvement Program (CIP) budget of approximately \$83 million. The CIP budget is augmented with additional encumbered on-going projects and assessment district improvements. The Department includes the following Divisions: Engineering and Transportation Services, Municipal Operations, and Administration.

The Public Works Team consists of 105 full-time employees, part-time, seasonal and contract employees. The department also employs and utilizes a large contingent of consultants and contractors working together with staff to accomplish the Department's mission, "Protecting and Providing Quality Public Improvements and Services."

More specifically, current Department Goals include:

- Recruit, develop, and retain the best possible team members for Public Works.
- Oversee and provide project and construction management of a large Capital Improvement Program including high priorities projects such as reconstruction of two Fire Stations and a Branch Library, Sunset View Park construction including possible two pedestrian bridges, development and construction of a new drainage pumping system on Balboa Island, major dredging of lower Newport Harbor, and Neighborhood Revitalization Improvements.
- Continue efforts to review and update infrastructure master plans to reflect the community's goals of quality public infrastructure that are sustainable into the future with emphasis on the transportation and signal system, parks and beaches, Newport Harbor, facilities, storm water quality and environmental resources, and tidelands; and to translate the master plans into a five-year strategic plan and capital program budget.



# Deputy Public Works Director/City Engineer



- Oversee, manage and provide necessary and/or enhanced levels of maintenance and operation of the City's infrastructure, facilities, parks and beaches as well as the City fleet and support systems.
- Continuously review and look to improve our project delivery capability and maintenance efforts, including use of project management tools and technology to assure we are optimally organized, have the most efficient processes, provide quality customer services and have the right core competencies to deliver the highest quality improvements and services on time and within budget.

## Deputy Public Works Director/City Engineer

The Deputy Public Works Director/City Engineer will report to the Public Works Director and will administer and oversee approximately 38 staff members, and all the functions of the Engineering and Transportation Services Division. The Engineering and Transportation Services Division is further broken down into Engineering, Construction Services, Transportation and Development Services, and Water Quality and Environmental Programs. Typical areas of involvement, expertise and oversight for this position are in development and permitting; masterplan management and oversight; transportation, traffic planning and operations; roadway and bridge rehabilitation and construction; water, sewer and storm drain design and construction; buildings and major facility planning and construction, marine structures, facilities and dredging operations; urban runoff and storm water quality; and other civil works.

## The Ideal Candidate

A successful candidate will have a firm understanding of advanced principles and practices of Civil Engineering including budget and expense management; management of a large and broad-based Capital Improvement Program; land development and subdivision review and permitting, transportation planning, traffic engineering and traffic operations. This candidate will also have the ability to manage and prioritize a high volume of projects simultaneously while staying abreast of the new trends in the field of Civil and Transportation Engineering.

This position requires a minimum of six (6) years of increasingly responsible professional public works civil engineering experience. Three (3) years supervisory experience and substantial experience in managing public works capital improvement programs, transportation engineering, and/or development services. A Bachelor's degree in Civil Engineering and possession of current licensing as a Registered Professional Engineer in Civil Engineering issued by the State Board of Registration for Professional Engineers in the State of California is required. Master's degree in Public Administration, Business Administration or a related field preferred.

## Compensation Package

The current salary range is \$14,076 to \$17,109 per month; Starting salary will be commensurate with the selected candidate's qualifications. This position is covered by the Key & Management – Administrative Management unrepresented group, which includes the following competitive benefits package:

**Retirement:** California Public Employee Retirement System (CalPERS) plan, which offers reciprocity between agencies. Classic employees receive a defined benefit pension based on the 2.5% @ 55 formula. Classic tier II employees, who have been in the CalPERS system and are new to the City of Newport Beach, will receive a 2% @ 60 formula. Employees new to the City and CalPERS, and do not belong to a reciprocal agency of CalPERS, will receive the tier III formula of 2% @ 62.

**Cafeteria Plan:** \$1,725 monthly cafeteria allowance to purchase medical, dental and vision insurance

**Technology Allowance:** Monthly smart phone plan and equipment stipend

**Flex Leave:** 156 hours up to a maximum of 260 hours annually based on years of service

**Administrative Leave:** Up to 80 hours per calendar year at the discretion of the City Manager

**Holidays:** Equivalent to 12 paid holidays per year

**Life Insurance:** \$50,000 in City-paid coverage

**Section 457 Deferred Compensation Plan:** Optional for employee contribution

# Deputy Public Works Director/ City Engineer

## The Selection Process

Please visit our City's website to apply on-line and to view the full description of the position and its requirements at [www.newportbeachca.gov](http://www.newportbeachca.gov). Candidates must include a cover letter briefly addressing their increasingly responsible professional public works civil engineering experience along with supervisory experience, resume and three professional references with the on-line application.

**The final filing date for this recruitment is Friday, October 26, 2018 at 5 p.m.**

The selection process will begin with a complete evaluation of the application and supplemental materials. Candidates deemed the most qualified as reflected in their application materials will be invited to an oral interview and/or assessment(s) that will measure the candidate's combination of experience, training, knowledge, education, skills, abilities and other characteristics. The selected candidate will undergo an extensive background process including criminal history, credit history, driving record, military record, civil records check, past & current employers, education and reference checks. Please contact Human Resources at (949) 644-3300 if you have any questions.

The City of Newport Beach is an equal opportunity employer and does not discriminate on the basis of any class protected by law.



**City of Newport Beach**  
100 Civic Center Drive  
Newport Beach, CA 92660  
[www.newportbeachca.gov](http://www.newportbeachca.gov)