

City of Newport Beach Sculpture Exhibition

Phase IV

Arts Commission Meeting
March 21, 2019



INTRODUCTIONS



SELECTION CRITERIA:

Artistic Merit:

- Artwork is of high-quality and demonstrative of originality and artistic excellence
- Artist has strong professional qualifications

Durability:

- The artwork is be made of high-quality materials which can withstand the natural outdoor elements of coastal Southern California
- Artwork requires minimal to no maintenance

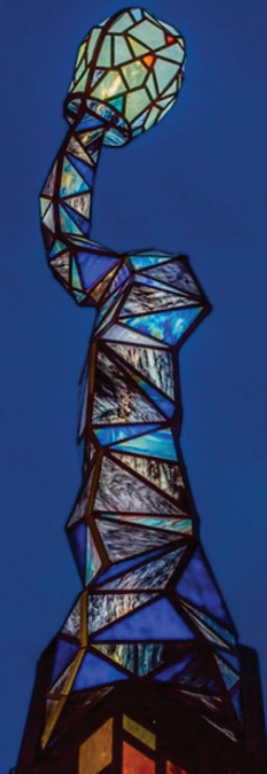
Practicality:

- Artwork is of appropriate subject matter for audiences of all ages
- Artwork is safe and shall not exhibit unsafe conditions or factors that may bear on public liability

Site appropriateness:

- Artwork is suitable in scale to be seen in environment
- Artwork is suitable for viewing from all angles
- Artwork will be an appropriate addition to the current collection

**ELIGIBLE SUBMISSIONS
AFTER SECONDARY
REVIEW
(31)**



Stephanie Bachiero
(Laguna Beach, CA)
Pinnacle

Size: 72 x 86 x 58 inches

Weight: 150 lb

Medium: Engineered Aerospace
Composite Polymer Reinforced
with Carbon Fiber, Automotive
Lacquer

Honorarium: None specified



Stephanie Bachiero. *Pinnacle*. Slide 1 of 2.



Stephanie Bachiero. *Pinnacle*. Slide 2 of 2.

**Grant Bathke
(Vista, CA)
*Hope Springs Eternal***

Size: 1/4" aluminum 8 feet in diameter.

Weight: approx. 90 pounds

Medium: Aluminum and Plexiglass, Steel Support

Honorarium: \$4,800



Grant Bathke. *Hope Springs Eternal*. Slide 1 of 2.



Grant Bathke. *Hope Springs Eternal*. Slide 2 of 2.

Richard Becker
(San Diego, CA)
The Tot

Size: 32 x 11 x 11in

Weight: 70 lb.

Medium: Stainless Steel

Honorarium: None specified



Richard Becker. *The Tot*. Slide 1 of 2.



Richard Becker. *The Tot*. Slide 2 of 2.

Richard Bohn
(Costa Mesa, CA)
Symbolic Ocotillo

Size: bottom diameter: 18"
top diameter: 44"
height: 102"

Weight: 200 lbs.

Medium: Stainless Steel

Honorarium: None specified



Richard Bohn. *Symbolic Ocotillo*. Slide 1 of 2.



Richard Bohn. *Symbolic Ocotillo*. Slide 2 of 2.

**David Buckingham
(Los Angeles, CA)
*Spy Boy***

Size: 24 x 24 x 72 ins.

Weight: 75 lbs.

Medium: Found Scrap Steel

Honorarium: \$5,000



David Buckingham. *Spy Boy*. Slide 1 of 1.

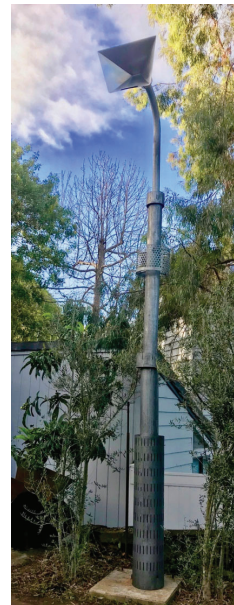
**Kenneth Capps
(Carlsbad, CA)
*LENZ***

Size: 204 x 30 x 20 inches

Weight: 400 lbs.

Medium: Galvanized and
stainless steel

Honorarium: \$6,000



Kenneth Capps. *LENZ*. Slide 1 of 1.

**Lake Daffner
(Las Vegas, NV)
*polished Stainless
steel sculptures***

Size: figures range from
60"x42"x17" - 70"x20"x30"

Weight: 120-130 lbs.

Medium: Stainless steel,
Hardened steel, Concrete

Honorarium: \$5,000



Lake Daffner. *polished Stainless steel sculptures*. Slide 1 of 2.



Lake Daffner. *polished Stainless steel sculptures*. Slide 2 of 2.

**Scott Froschauer
(Los Angeles, CA)
*START Now***

Size: 36" w x 120" h

Weight: 45 lbs.

Medium: Stainless Steel

Honorarium: \$2,500



Scott Froschauer. *START Now*. Slide 1 of 2.



Scott Froschauer. *START Now*. Slide 2 of 2.

**Andrew Miguel Fuller
(Oakland, CA)
*An appliance, an echo,
and a mirror***

Size: 14" x 15" x 44"

Weight: 120 lbs.

Medium: Polished Brass

Honorarium: \$2,500



Andrew Miguel Fuller. *An appliance, an echo, and a mirror*. Slide 1 of 2.



Andrew Miguel Fuller. *An appliance, an echo, and a mirror*. Slide 2 of 2.

Alex G
(San Diego, CA)
Feathers in the Wind

Size: 10'x20"x49"

Weight: 200 lbs.

Medium: Kinetic, Powder
Coated Steel

Honorarium: None specified



Alex G. *Feathers in the Wind*. Slide 1 of 2.



Alex G. *Feathers in the Wind*. Slide 2 of 2.

Craig Gray
(Key West, FL)
Slices of Heaven

Size: roughly 108" tall and 60" in diameter

Weight: 750 lbs.

Medium: Steel, Stucco, Masonry Backer board

Honorarium: \$5,000



Craig Gray. *Slices of Heaven*. Slide 1 of 2.



Craig Gray. *Slices of Heaven*. Slide 2 of 2.

**Grant Irish
(Oakland, CA)
*R.M.A.B.***

Size: 140" l x 72" w x 97" h

Weight: approx. 800 lbs.

Medium: heavy gauge stainless
steel sheet metal

Honorarium: \$5,300



Grant Irish. *R.M.A.B.* Slide 1 of 2.



Grant Irish. *R.M.A.B.* Slide 2 of 2.

**Ray Katz
(Pontiac, MI)
*Hurricane***

Size: 16'W x 9.5'H x 7'D

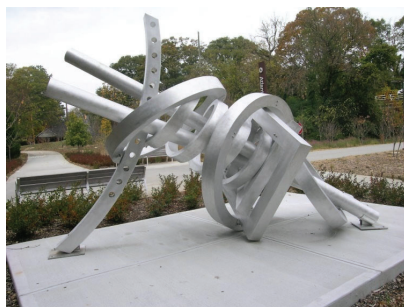
Weight: 200 lbs.

Medium: Brushed Aluminum

Honorarium: \$5,993.88



Ray Katz. *Hurricane*. Slide 1 of 2.



Ray Katz. *Hurricane*. Slide 1 of 2.

Netra Khattri
(St. Louis, MO)
cuddle

Size: n/a

Weight: 23 lbs.

Medium: Metal

Honorarium: \$250



Netra Khattri. *cuddle*. Slide 1 of 2.



Netra Khattri. *cuddle*. Slide 2 of 2.

**Coral Lambert
(Alfred, NY)
'Fallen Sky'**

Size:
section 1, 9ft x 8ft x 5ft
section 2, 5ft x 4ft x 4ft

Weight: 1,500 lbs.

Medium: Enamelled Steel and
Nickle Plated Cast Iron

Honorarium: \$6,000



Coral Lambert. 'Fallen Sky'. Slide 1 of 2.



Coral Lambert. 'Fallen Sky'. Slide 2 of 2.

**Diana Markessinis
(Oakland, CA)
*Kaktos***

Size: 101" h x 27" w x 13" d

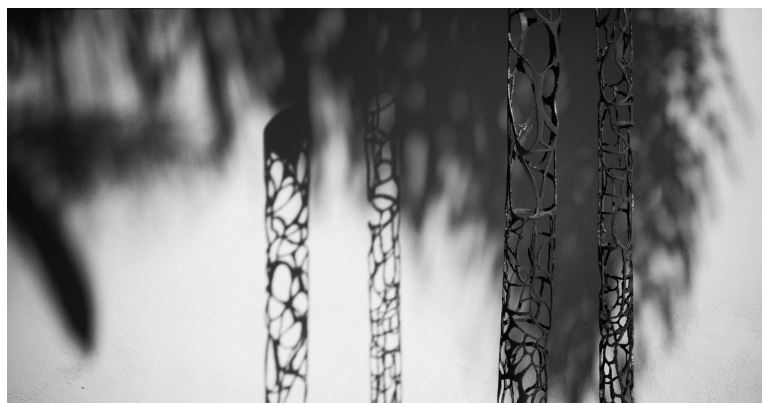
Weight: 75 lbs.

Medium: Steel

Honorarium: None specified



Diana Markessinis. *Kaktos*. Slide 1 of 2.



Diana Markessinis. *Kaktos*. Slide 2 of 2.

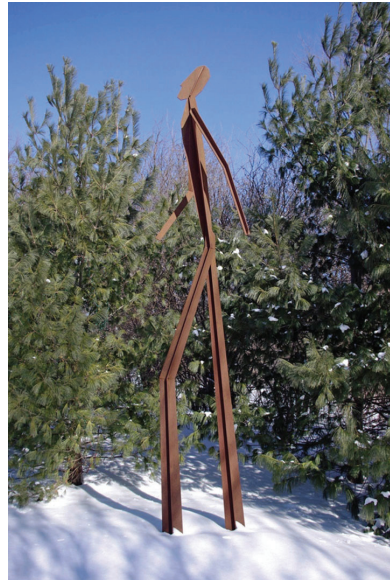
**John Merigian
(Newton, KS)
*Contender***

Size: 13 feet tall, on a 4 foot wide x 5 foot deep baseplate

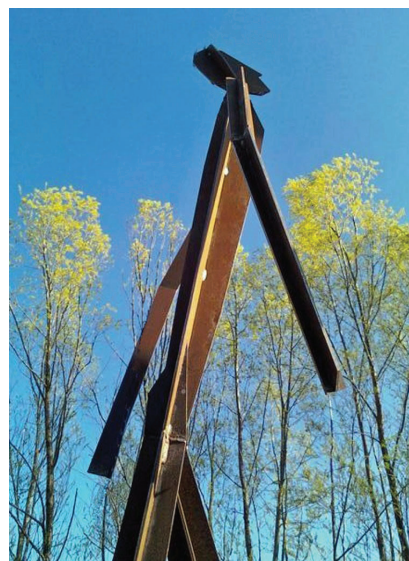
Weight: 300 lbs.

Medium: Welded Corten

Honorarium: \$5,900



John Merigian. *Contender*. Slide 1 of 2.



John Merigian. *Contender*. Slide 2 of 2.

Briyana Negrette
(Orange County, CA)
Iunu Obelisk

Size: 11 ft x 1 ft x 11 ft

Weight: 60 lbs.

Medium: Wood and copper
grounding electrical rods

Honorarium: \$3,100



Briyana Negrette. *Iunu Obelisk*. Slide 1 of 2.



Briyana Negrette. *Iunu Obelisk*. Slide 2 of 2.

**Devon Pedersen
(Newport Beach, CA)
*Heartbeat***

Size: 129" height x 48" width

Weight: n/a

Medium: Baltic birch plywood,
corten steel, steel tubing, LED
light bulbs (internally powered)

Honorarium: \$6,000



Devon Pedersen. *Heartbeat*. Slide 1 of 2.



Devon Pedersen. *Heartbeat*. Slide 2 of 2.

Bertil Petersson
(Los Angeles, CA)
Divisions

Size: ½" painted steel, 10'x4'

Weight: 700 lbs.

Medium: Steel

Honorarium: \$3,000



Bertil Petersson. *Divisions*. Slide 1 of 2.



Bertil Petersson. *Divisions*. Slide 2 of 2.

**Sue Quinlan
(Boulder, CO)
*Kinship Totem***

Size: 105"T x 10"W x 9"D

Weight: 500 lbs.

Medium: Cast Concrete and
Steel in a recycled concrete curb
& gutter form

Honorarium: \$6,000



Sue Quinlan. *Kinship Totem*. Slide 1 of 1.

Steven Rieman
(Yucca Valley, CA)
Chairman of the Board

Size: 13' tall (includes 3' steel
plinth), 6' dynamic width, 5' deep

Weight: 350 lbs.

Medium: Stainless Steel

Honorarium: \$3,700



Steven Rieman. *Chairman of the Board*. Slide 1 of 2.



Steven Rieman. *Chairman of the Board*. Slide 2 of 2.

Bill Shillalies
(Massapequa, NY)
untitled

Size: 24"x 24"x 24"

Weight: 50 lbs.

Medium: Ceramic

Honorarium: \$700



Bill Shillalies. *untitled*. Slide 1 of 1.

Timothy Smith
(Dana Point, CA)
Revised Maps of the Present

Size: 20' x 20' x 10'

Weight: 200 lbs.

Medium: Oil and acrylic on wood, latex sculpture, LED lights, speakers

Honorarium: \$6,000



Timothy Smith. *Revised Maps of the Present*. Slide 1 of 2.



Timothy Smith. *Revised Maps of the Present*. Slide 2 of 2.

Nathan Snyder
(Santa Barbara, CA)
Tesseract

Size: 3.5 x 6 x 4 ft.

Weight: 275 lbs.

Medium: Welded metal
sculpture, stainless steel

Honorarium: \$6,000



Nathan Snyder. *Tesseract*. Slide 1 of 2.



Nathan Snyder. *Tesseract*. Slide 2 of 2.

Kathy Taslitz
(Los Angeles, CA)
Exposed

Size: 42" H x 19" W x 11" D

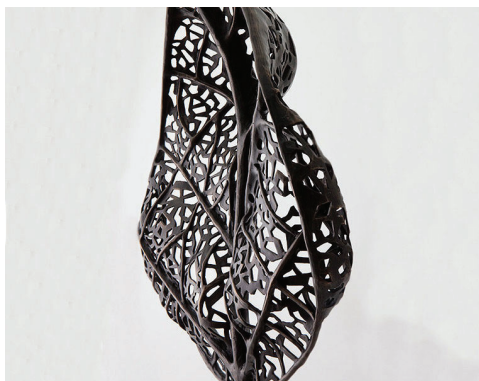
Weight: 40 lbs. (not including
base)

Medium: Available in Blackened
Bronze or Stainless Steel

Honorarium: \$6,000



Kathy Taslitz. *Exposed*. Slide 1 of 2.



Kathy Taslitz. *Exposed*. Slide 2 of 2.

**Patricia Vader
(Martinez, CA)
*ROLLIN' UP***

Size: 130" x 18" x 18"

Weight: 300 lbs.

Medium: Painted steel and
chrome

Honorarium: \$6,000



Patricia Vader. *ROLLIN' UP*. Slide 1 of 1.

**Will Vannerson
(Kansas City, MO)
*Borbor 9***

Size: 105" H x 50" W x 40" D

Weight: 225 lbs.

Medium: Galvanized Steel

Honorarium: \$6,000



Will Vannerson. *Borbor 9*. Slide 1 of 2.



Will Vannerson. *Borbor 9*. Slide 2 of 2.

Michael Boyce
(Boise, ID)
Mule Deer

Size: 5' 2" tall, 2 1/2' deep, 3' 10"
wide

Weight: 500 lbs.

Medium: Bronze

Honorarium: \$4,500



Michael Boyce. *Mule Deer*. Slide 1 of 2.



Michael Boyce. *Mule Deer*. Slide 2 of 2.

**Benjamin Victor
(Boise, ID)
*Delilah***

Size: 5'3" tall, 11" deep, 20"
wide

Weight: 300 lbs.

Medium: Bronze

Honorarium: \$4,000



Benjamin Victor. *Delilah*. Slide 1 of 1.

Dane Winkler

Balefire

Size: 5.5' x 3' x 2'

Weight: 250 lbs.

Medium: Fabricated steel, light,
and silicone rubber

Honorarium: \$6,000



Dane Winkler. *Balefire*. Slide 1 of 2.



Dane Winkler. *Balefire*. Slide 2 of 2.

PUBLIC COMMENT



DISCUSSION OF JURY RESULTS AND PUBLIC POLL



THANK YOU!

