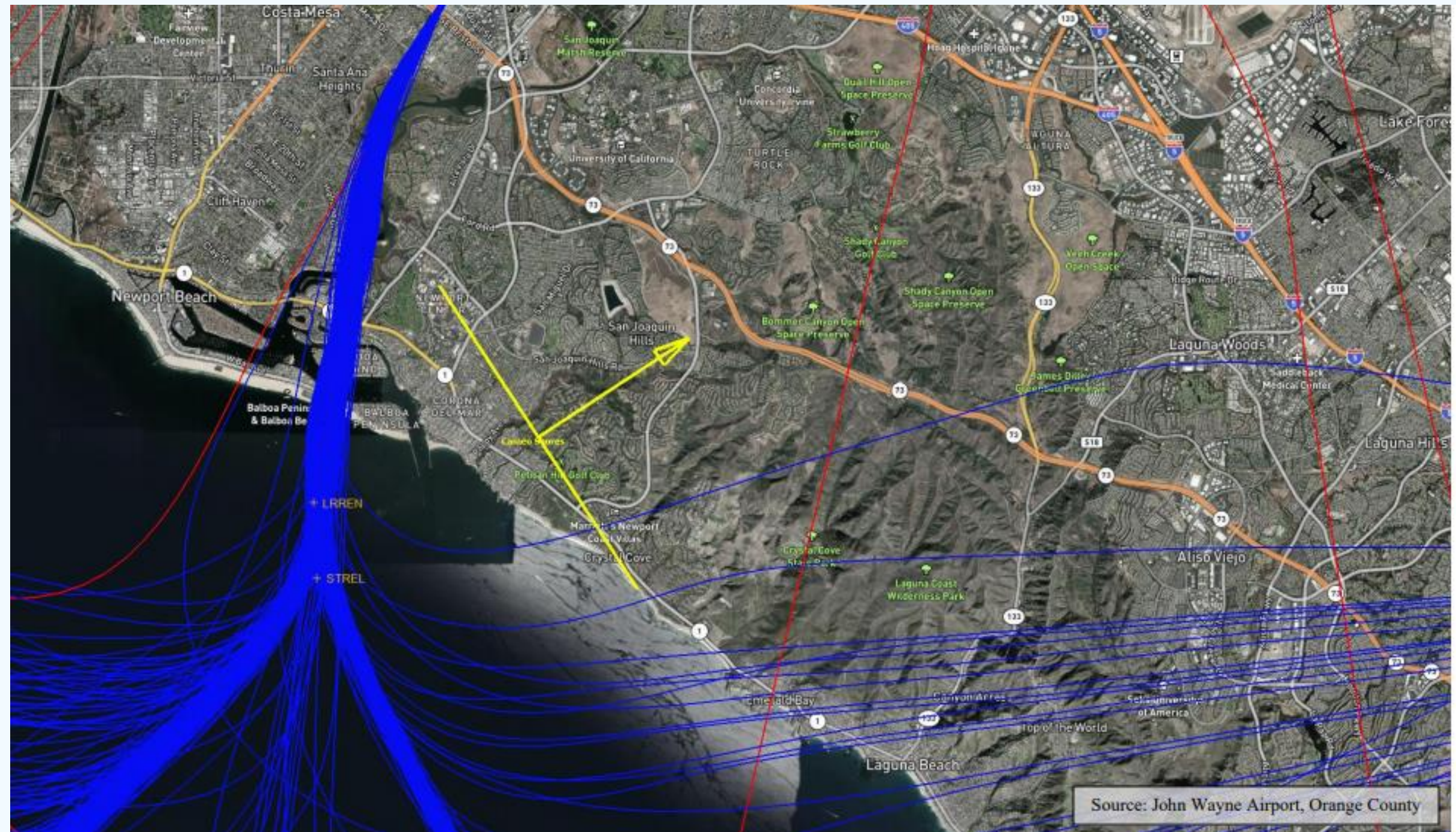

EARLY TURNS

REVIEW OF RECENT AND PAST DATA INDICATE SOME EARLY TURNS ARE OCCURRING OVER SOUTH NEWPORT BEACH, CAMEO SHORES, AND SHORECLIFFS

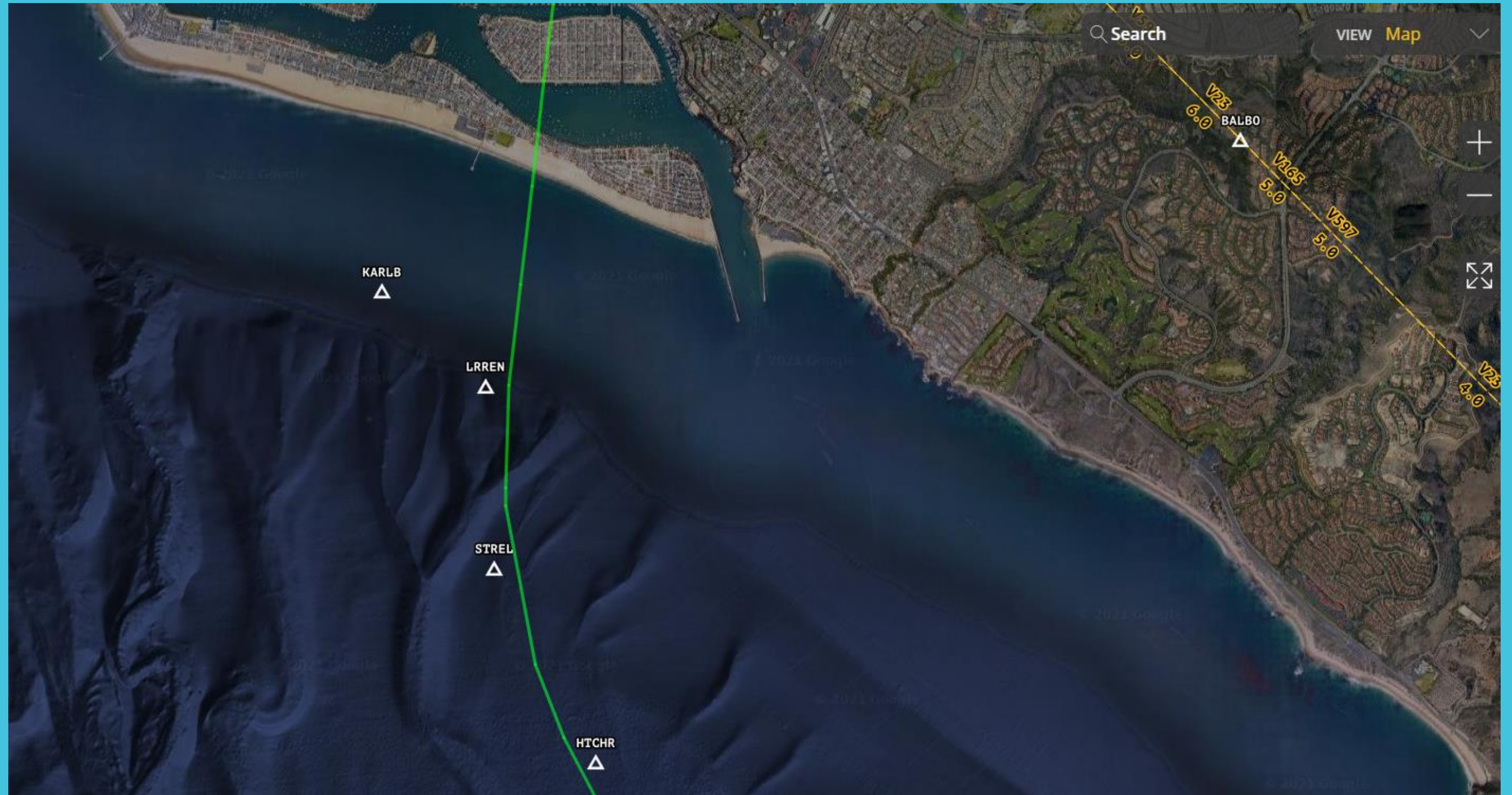


PORTION OF 2018 NEWPORT SETTLEMENT

No Turns until STREL waypoint

**To the maximum extent
practical**

"To the maximum extent practicable, the FAA agrees that aircraft departing from John Wayne Airport using PIGGN, HHERO, FINZZ, or STAYY (if approved and implemented) shall not be vectored until passing abeam of the STREL waypoint or any other waypoint at that location in the future

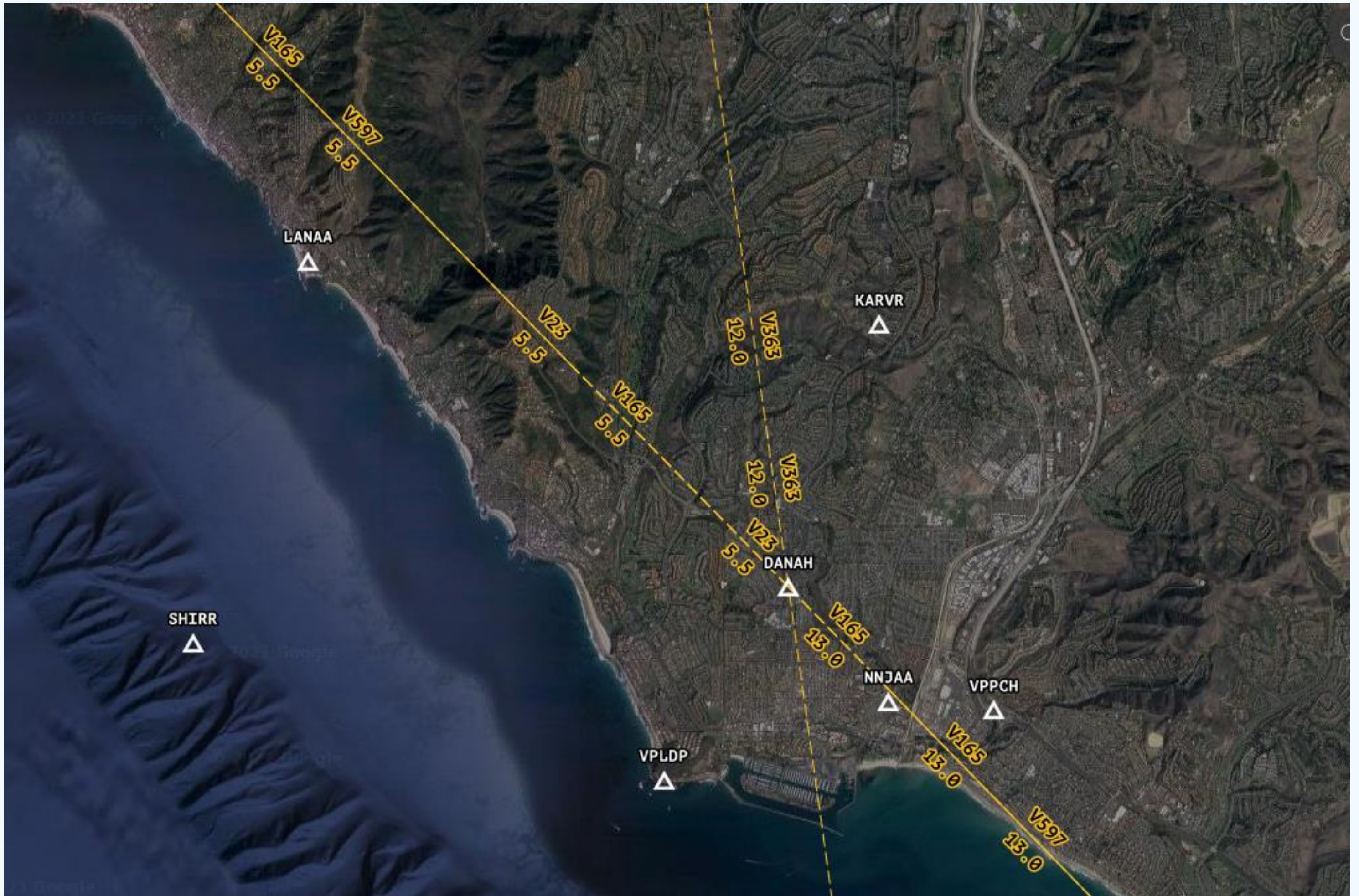


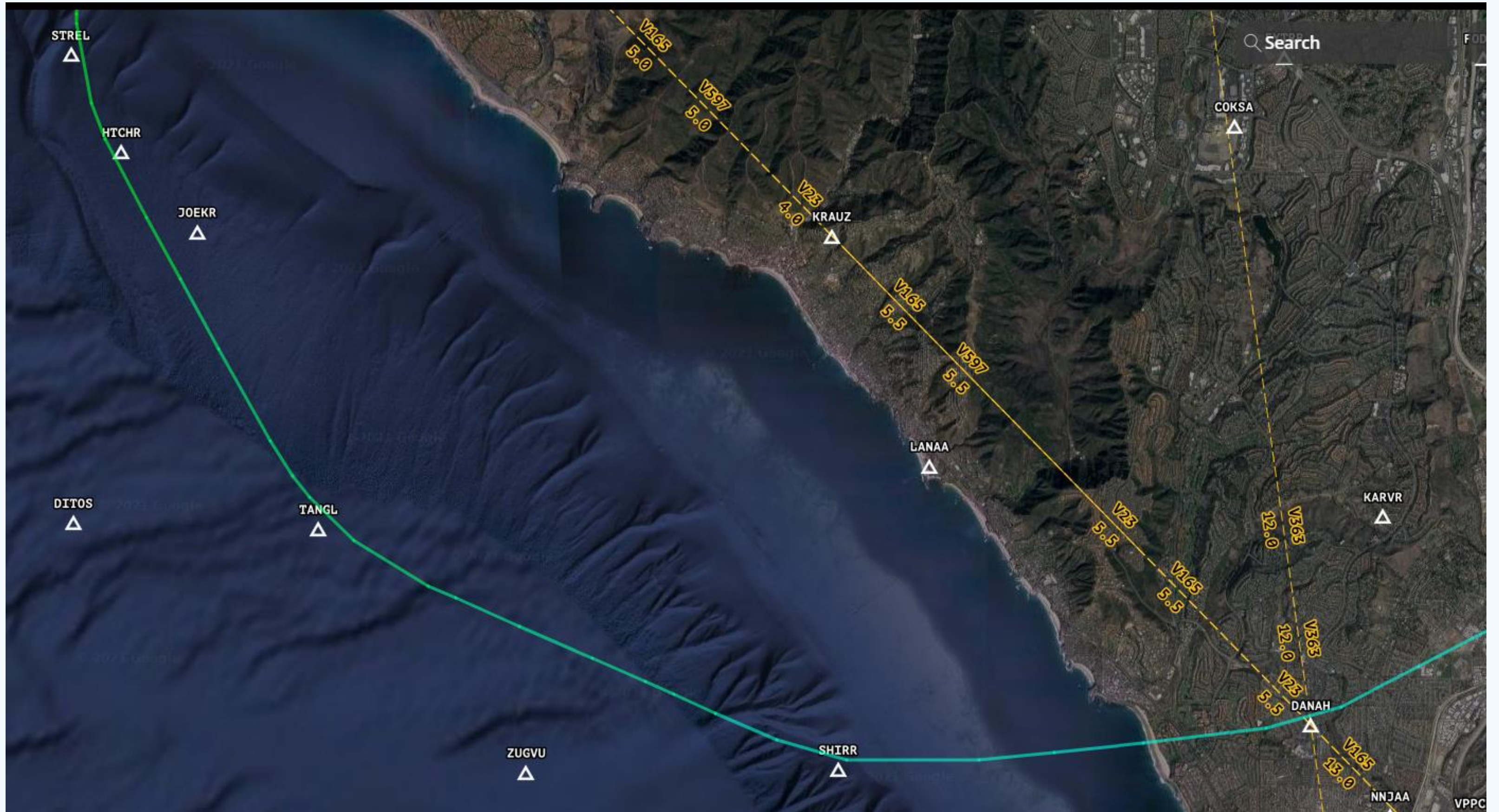
PORTION OF 2018 Laguna SETTLEMENT

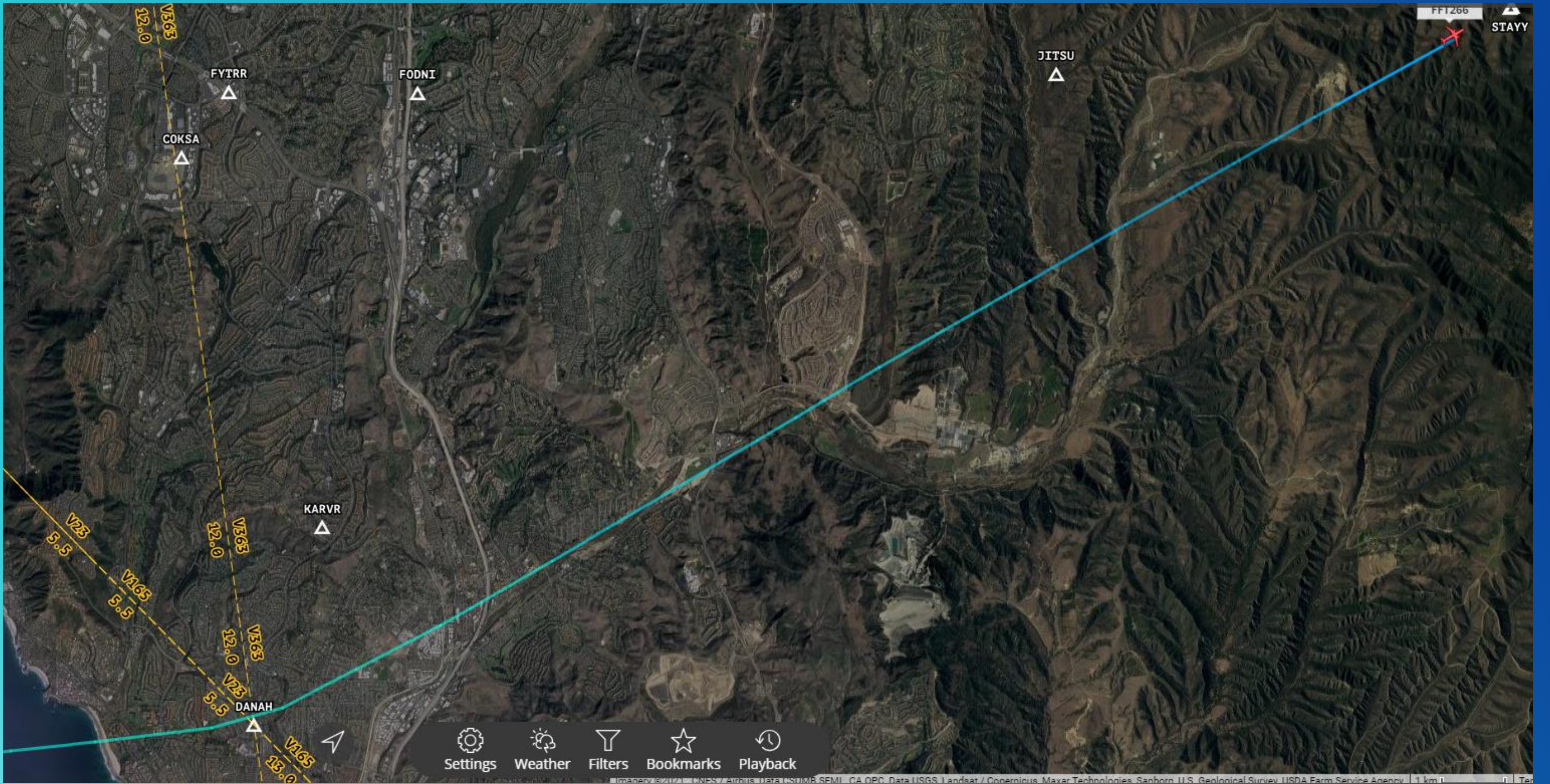
No Turns until DANAH waypoint

**To the maximum extent
practical**

"To the maximum extent practicable, the FAA agrees that the FAA shall keep aircraft departing from SNA using the PIGGN and STAYY (if approved and implemented) SIDS on the procedures as much as possible. The FAA agrees that, to the maximum extent practicable it shall not vector aircraft off the PIGGN and STAYY (if approved and implemented) procedures until passing abeam of the DANAH waypoint







FFI266 STAYY

V165 12.0

FYTRR

FODNI

JITSU

COKSA

KARVR

DANAH

V23 5.5

V165 5.5

V165 12.0

V165 12.0

V23 5.5

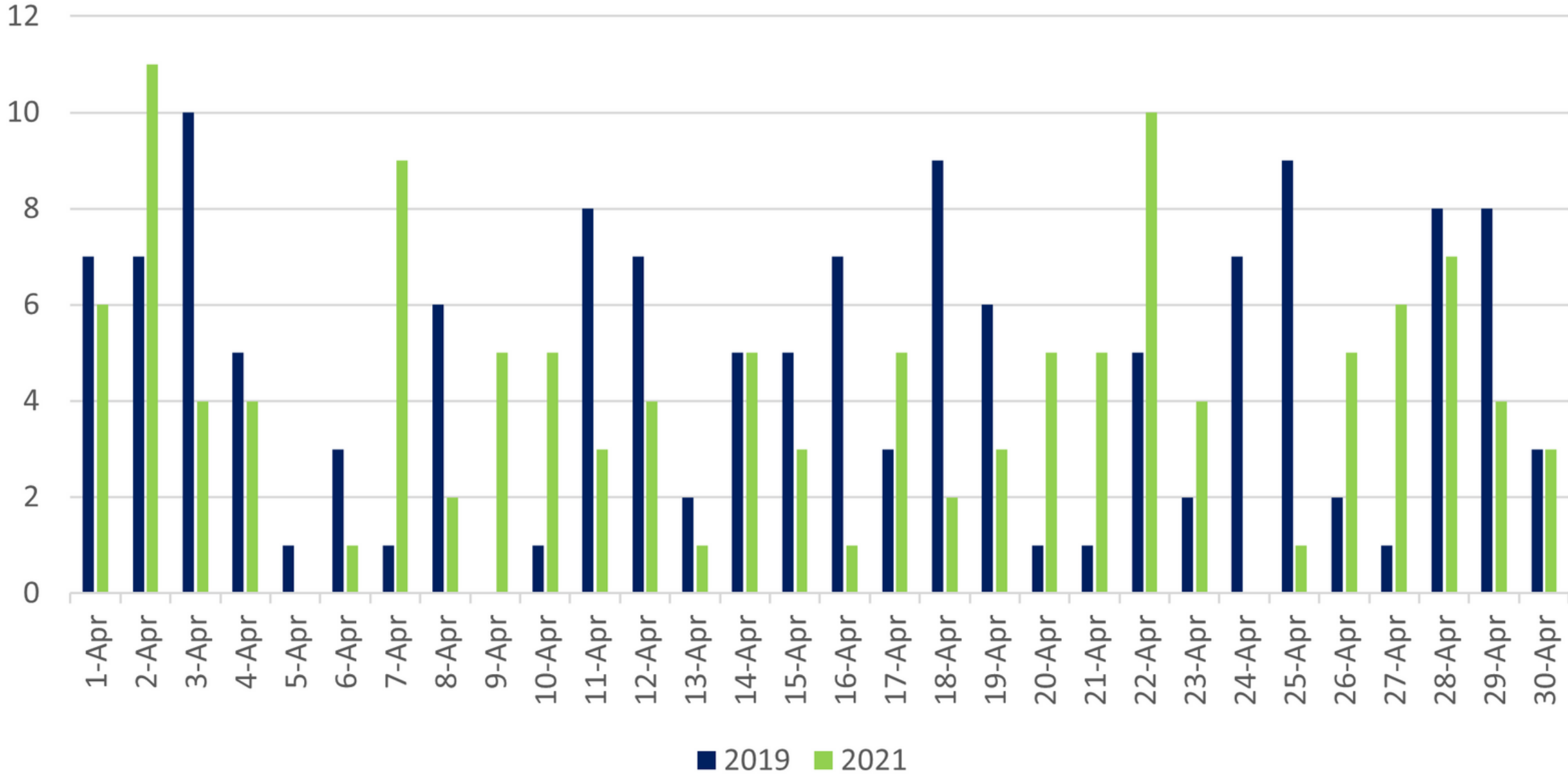
V165 12.0

- Settings
- Weather
- Filters
- Bookmarks
- Playback

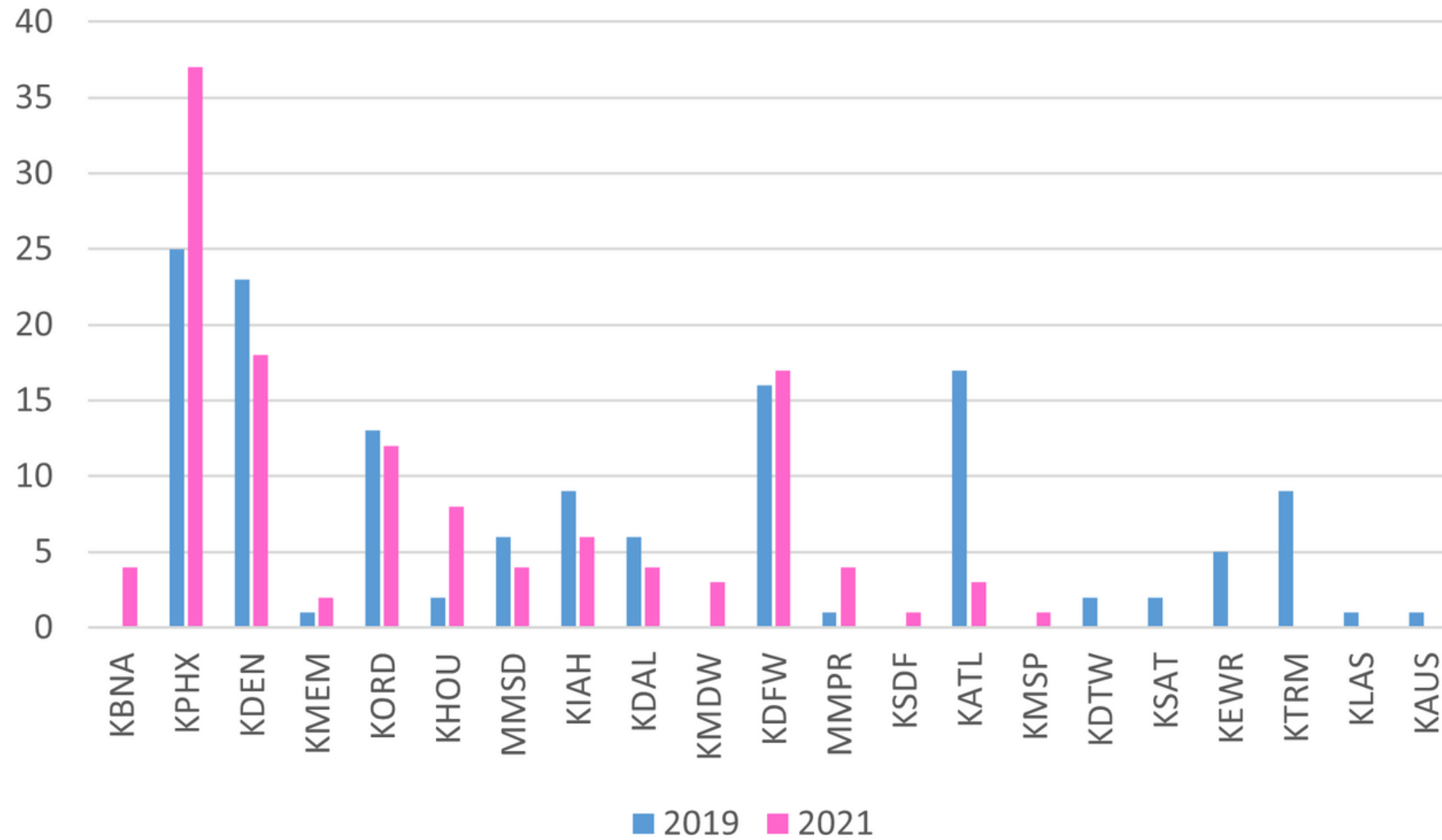
**FACTORS FOR VECTORING
OFF THE ROUTE MAY
INCLUDE SAFETY AND
EFFICIENCY, PILOT
REQUEST, ETC.**

**ANALYSIS OF EARLY TURNS,
APRIL 2019 AND APRIL 2021**

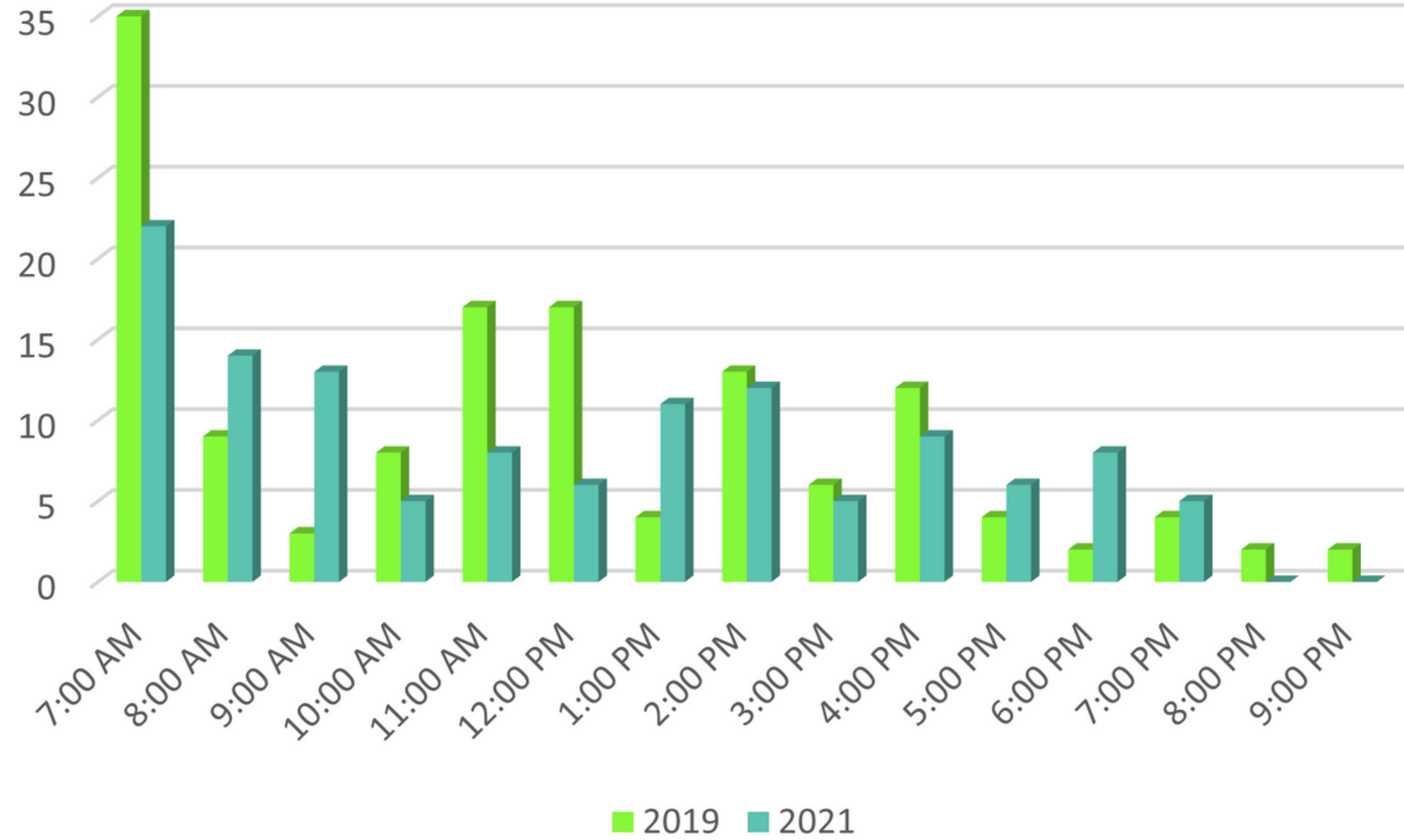
Early Turn By Date



Early Turn by Destination



Early Turns by Hours of the Day



NEXT STEP: DETERMINE REASONS

**CONTACT WITH
FAA**

**CONTACT WITH
AIRLINES**