

**NEWPORT BEACH CIVIC CENTER
SCULPTURE EXHIBITION
PHASE VII
SUBMISSION QUALIFICATION MEETING**



INTRODUCTIONS





SELECTION CRITERIA:

Artistic Merit:

- Artwork is of high-quality and demonstrative of originality and artistic excellence
- Artist has strong professional qualifications

Durability:

- The artwork is to be made of high-quality materials which can withstand the natural outdoor elements of coastal Southern California
- Artwork requires minimal to no maintenance

Practicality:

- Artwork is of appropriate subject matter for audiences of all ages
- Artwork is safe and shall not exhibit unsafe conditions or factors that may bear on public liability

Site appropriateness:

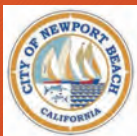
- Artwork is suitable in scale to be seen in environment
- Artwork is suitable for viewing from all angles

PUBLIC POLL SUMMARY:

- Poll will be posted on Arts Orange County's website SparkOC.com
- All works qualified as eligible from this meeting will be included
- Participants can vote for up to three favorite works
- Security measures include:
 - Users required to complete a CAPTCHA form designed to catch bot behavior
 - Users required to submit a valid e-mail address and provide their ZIP code and city of residence, only votes from Newport Beach ZIP codes will be counted
- Order of depicted works will be shuffled at random every few days so that no work will enjoy any positioning advantage
- Poll to be promoted by Arts Orange County to e-mail subscribers and via social media. Sample images of submitted artwork, when used, will be chosen via random number generator
- Raw vote logs of both accepted and declined voting attempts will be examined to detect any patterns or voter behavior which, in Arts Orange County's judgment, may give rise to a misleading interpretation of the "voice of the community".
- Finalists as chosen by the public poll must still pass a thorough review by our installation service, confirmation of availability in the condition submitted, and a successful execution of a contract with the artist. Alternates may take the place of finalists in any event of a Finalist failing to pass these steps.
- Final vote on whether to approve the presented finalists to be installed rests with the Newport Beach City Council.

ELIGIBLE SUBMISSIONS AFTER PRELIMINARY REVIEW (43)

***missing information has been requested from artists**



SLIDE 7

Allanoff, Ben
(Joshua Tree, CA)
Sunfair

Size: 80" tall, 74" wide, 5" deep

Weight: 176 pounds

Medium: Welded Steel



Allanoff, Ben. *Sunfair*. Slide 1 of 2.



SLIDE 8



Allanoff, Ben. *Sunfair*. Slide 2 of 2.

Babcock, Matt
(Seattle, WA)
Cerberus

Size: 80" tall, 46" wide, 31" deep

Weight: 76 pounds

Medium: Powdered Coated Aluminum



Babcock, Matt. *Cerberus*. Slide 1 of 2.



Babcock, Matt. *Cerberus*. Slide 2 of 2.

SLIDE 11

**Beck, Nicole
(Chicago, IL)
*Asteray***

Size: 17 ' tall, 4' diameter

Weight: 1,000 pounds

Medium: Stainless Steel, Powder Coated
Steel, Epoxied Mosaic



Beck, Nicole. *Asteray*. Slide 1 of 2.

SLIDE 12



Beck, Nicole. *Asteray*. Slide 2 of 2.

Benefiel, Joan
(Brooklyn, NY)
Hoodoos

Size: 96" tall, 29" wide, 26" deep

Weight: 4,000 pounds

Medium: Solid Cast Resin, Corten Steele



Benefiel, Joan. *Hoodoos*. Slide 1 of 2.



Benefiel, Joan. *Hoodoos*. Slide 2 of 2.

SLIDE 15

Bjorgulfsson, Heimir
(Los Angeles, CA)
Not Every Pearl Has Its Oyster

Size: 96" tall, 30" wide, 5" deep

Weight: 100 pounds

Medium: Aluminum Traffic Sign, Wood, Concrete Base



Bjorgulfsson, Heimir. *Not Every Pearl Has Its Oyster*. Slide 1 of 2.

SLIDE 16



Bjorgulfsson, Heimir. *Not Every Pearl Has Its Oyster*. Slide 2 of 2.

Broekelschen, Andra
(Corona del Mar, CA)
Key to the City

Size: 57" tall, 34" wide

Weight: Unknown

Medium: Multimedia Mosaic Sculpture,
Steel, Glass, Tile, Ironware, Beach Glass,
Keys, Glazed Clay Art, Antic Door
Hardware, Found Objects



Broekelschen, Andra. *Key to the City*. Slide 1 of 2.



Broekelschen, Andra. *Key to the City*. Slide 2 of 2.

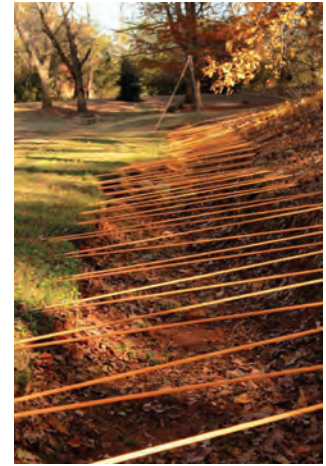
SLIDE 19

**Brush, Brittany
(Dana Point, CA)
*Common Threads***

Size: Needle – 2m tall
Trench: 5m tall, 2m wide, 100m length

Weight: 300 pounds

Medium: Fabricated Steel, Welded Steel
Pins, Dyed Rope, Concrete Base



Brush, Brittany. *Common Threads*. Slide 1 of 2.

SLIDE 20



Brush, Brittany. *Common Threads*. Slide 2 of 2.

Buck, Miggy
(New York, NY)
David

Size: 4' tall, 3' wide, 5' length

Weight: 350 pounds

Medium: Cement, Steel



Buck, Miggy. *David*. Slide 1 of 2.



Buck, Miggy. *David*. Slide 2 of 2.

Burton, Tyler
(Palm Springs, CA)
The Archeology of the Everyday

Size: 12" tall, 18" wide, 18" deep

Weight: 200 pounds

Medium: Concrete, Resin, Hydrostone, Plastics,
House Paint



Burton, Tyler. *The Archeology of the Everyday*. Slide 1 of 2.



Burton, Tyler. *The Archeology of the Everyday*. Slide 2 of 2.

SLIDE 25

**Calderon, Rude
(Long Beach, CA)
*Introspection***

Size: 77" tall, 12" wide, 10" deep

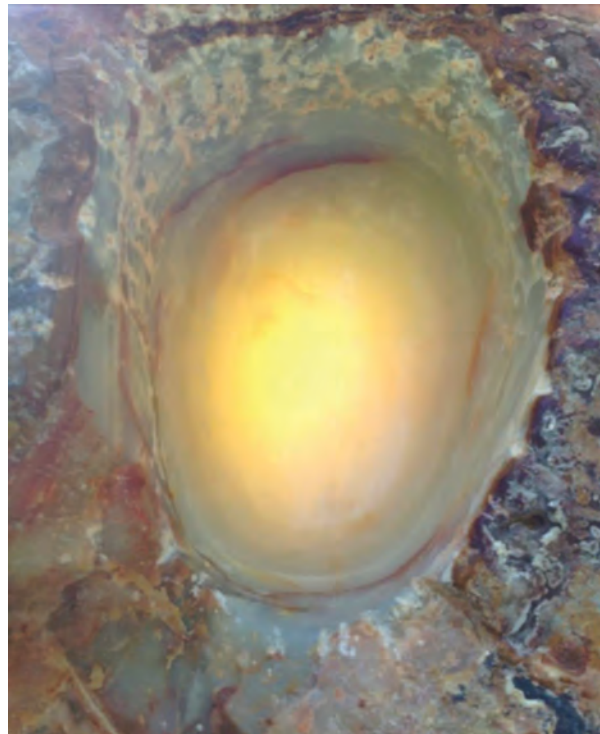
Weight: 350 pounds

Medium: Travertine, Onyx, Kansas
Fencepost Limestone, Stainless Steel



Calderon, Rude. *Introspection*. Slide 1 of 2.

SLIDE 26



Calderon, Rude. *Introspection*. Slide 2 of 2.

Criscoe, Jonas
(Austin, TX)
La Silla del Sol

Size: 12' tall, 12' wide, 10' deep

Weight: 500 pounds

Medium: Plastic Blocks, All Thread
Connectors



Criscoe, Jonas. *La Silla del Sol*. Slide 1 of 2.



Criscoe, Jonas. *La Silla del Sol*. Slide 2 of 2.

Darkeem, Dennis-Redmoon
(Bronx, NY)
Calling the Four Winds

Size: 8' tall, 4' wide

Weight: 80 pounds

Medium: Wood



Darkeem, Dennis-Redmoon. *Calling the Four Winds*. Slide 1 of 2.



Darkeem, Dennis-Redmoon. *Calling the Four Winds*. Slide 2 of 2.

SLIDE 31

DeShong, Tim
(Caratunk, ME)
Cross-Section

Size: 20" tall, 20" wide, 6" deep

Weight: 80 pounds

Medium: White Marble



DeShong, Tim. *Cross-Section*. Slide 1 of 2.

SLIDE 32



DeShong, Tim. *Cross-Section*. Slide 2 of 2.

**ARTECLETTICA (Panziera,
Dominic and Garofalo, Daniela)
(Truckee, CA)**
Individuality n.2

Size: 9.5' tall, 6' wide, 6' deep

Weight: 1,200 pounds

Medium: Fiber, Rebar, Reinforced Concrete, Steel,
Fiberglass, Mosaic, Wood, Stainless Steel, Paint,
Diamond Finish Clear Coat



ARTECLETTICA (Panziera, Dominic and Garofalo, Daniela). *Individuality n.2*. Slide 1 of 2.



Panziera, Dominic and Garofalo, Daniela. *Individuality n.2*. Slide 2 of 2.

Elliot, Marguerite
(Fairfax, CA)
Where Have All The Birds Gone?

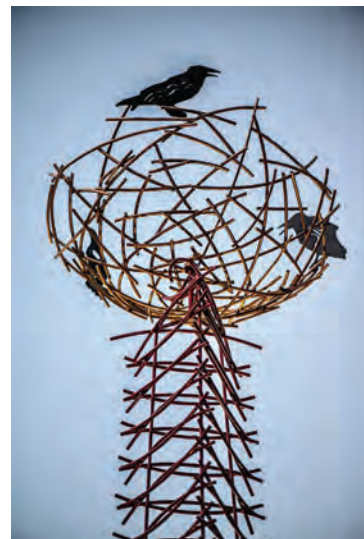
Size: 15' tall, 4' wide, 4' deep

Weight: 150 pounds

Medium: Steel, Powder Coated Pain



Elliot, Marguerite. *Where Have All The Birds Gone?*. Slide 1 of 2.



Elliot, Marguerite. *Where Have All The Birds Gone?*. Slide 2 of 2.

SLIDE 37

Fairfield, Stephen
(St. David, AZ)
Spider Clan Totem

Size: 250 pounds

Weight: 9' tall, 9' wide, 9' deep

Medium: Catalyzed Automobile Enamel on
Welded Steel



Fairfield, Stephen. *Spider Clan Totem*. Slide 1 of 2.

SLIDE 38



Fairfield, Stephen. *Spider Clan Totem*. Slide 2 of 2.

**Ferguson, Mr. and Mrs.
(Alameda, CA)**
Prey

Size: 7' tall, 15' wide

Weight: 2,400 pounds

Medium: Steel tubing frame, steel plate base and plinth, sheet steel wing structure, high density foam body, concrete skin with embedded pennies, nickels and dimes for feathers. Brass beak, glass eyes



Ferguson, Mr. and Mrs. *Prey*. Slide 1 of 2.



Ferguson, Mr. and Mrs. *Prey*. Slide 2 of 2.

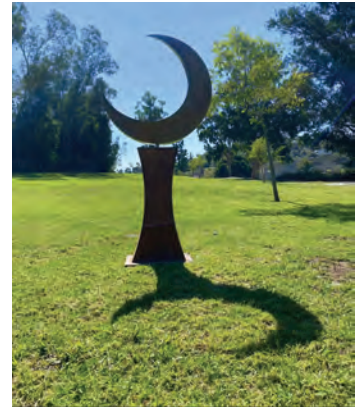
SLIDE 41

G, Alex
(Vista, CA)
To The Moon

Size: 84" tall, 36" wide, 12" deep

Weight: 90 pounds

Medium: Corten Steel, polished
Stainless Steel



G, Alex. *To The Moon*. Slide 1 of 2.

SLIDE 42



G, Alex. *To The Moon*. Slide 2 of 2.

Gornushkin, Sergey
(San Diego, CA)
Chimpish

Size: 14' tall, 4' wide, 4' deep

Weight: 200 pounds

Medium: Fiberglass, Metal Reinforcement,
Kinetic Bearings, Steel Pipe, Concrete
Coated Architectural Column



SLIDE 43



Gornushkin, Sergey. *Chimpish*. Slide 1 of 2.

SLIDE 44



Gornushkin, Sergey. *Chimpish*. Slide 2 of 2.

SLIDE 45

Hart, Tonya
(Toronto, Ontario, Canada)
Tidal Axis

Size: 54" tall, 30" wide, 30" deep

Weight: 175 pounds

Medium: Stainless Steel, Painted Steel
Base



Hart, Tonya. *Tidal Axis*. Slide 1 of 2.

SLIDE 46



Hart, Tonya. *Tidal Axis*. Slide 2 of 2.

SLIDE 47

**Hassen, Peter
(Sonoma, CA)
Cycles 3: Frogs, Bees & Birds 2020**

Size: 96" tall, 96" wide, 96" deep

Weight: 1,600 pounds

Medium: Corten Steel, Three Disks
Welded, Rust Patina



Hassen, Peter. *Cycles 3: Frogs, Bees & Birds* 2020. Slide 1 of 2.



SLIDE 48



Hassen, Peter. *Cycles 3: Frogs, Bees & Birds* 2020. Slide 2 of 2.

Hyder, Frank
(Miami, FL)
Janis

Size: 66" tall, 40" wide, 40" deep

Weight: 60 pounds

Medium: Fiberglass, LED's, Steel
Brackets, Concrete Base, Solar
Powered Battery



Hyder, Frank. *Janis*. Slide 1 of 2.



Hyder, Frank. *Janis*. Slide 2 of 2.

Jones, Stella
(Los Angeles, CA)
The Log

Size: 24" tall, 6.5" wide

Weight: 30 pounds

Medium: Alabaster Stone, Mahone
Wood Base



Katz, Ray
(Pontiac, MI)
Big Bang

Size: 8.5' tall, 13' wide, 7' deep

Weight: Unknown

Medium: Abstract Composition of
Hollow Formed Welded Aluminum



Katz, Ray. *Big Bang*. Slide 1 of 2.



Katz, Ray. *Big Bang*. Slide 2 of 2.

Keefer, Cindy
(Rancho Palos Verdes, CA)
Breathe

Size: 51" tall, 6" wide, 42" diameter

Weight: Unknown

Medium: Bronze



Keefer, Cindy. *Breathe*. Slide 1 of 2.



Keefer, Cindy. *Breathe*. Slide 2 of 2.

Kovaleski, Tanya
(Ojai, CA)
Shall We Dance

Size: 10'8" tall, 8'6" wide, 6' diameter

Weight: 70-85 pounds

Medium: Wood, Acrylic



Kovaleski, Tanya. *Shall We Dance*. Slide 1 of 2.



Kovaleski, Tanya. *Shall We Dance*. Slide 2 of 2.

Kuniholm, Paul
(Seattle, WA)
Stainless Heart

Size: 6' tall

Weight: 170 pounds

Medium: Stainless and Mild Steels



Kuniholm, Paul. *Stainless Heart*. Slide 1 of 2.



Kuniholm, Paul. *Stainless Heart*. Slide 2 of 2.

SLIDE 60

**Landis, Stephen
(Loveland, CO)
*Got Juice***

Size: Unknown

Weight: Unknown

Medium: Fiberglass, Steel, Concrete



Landis, Stephen. *Got Juice*. Slide 1 of 2.

SLIDE 61



Landis, Stephen. *Got Juice*. Slide 2 of 2.

Lee, Sophia
(San Francisco, CA)
Relieve Concerto 1

Size: 10' tall, 8' wide, 8' deep

Weight: Unknown

Medium: Painted Wood, Metal Brackets

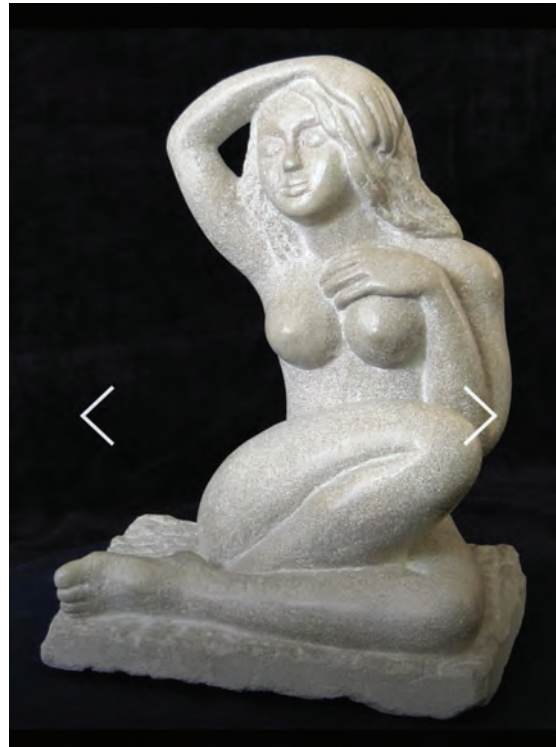


Marcone, Stefania
(Irvine, CA)
One of Us

Size: 7" x 9" x 13"

Weight: 25 pounds

Medium: Limestone



Markessinis, Diana
(Oakland, CA)
Kaktos

Size: 139" tall, 47" wide, 23" deep

Weight: 45 pounds each

Medium: Steel



Markessinis, Diana. *Kaktos*. Slide 1 of 2.



Markessinis, Diana. *Kaktos*. Slide 2 of 2.

Modrak, Judith
(New York, NY)
Endangered Fossils

Size: 8' tall, 6' wide, 5' deep

Weight: 800 pounds

Medium: Aqua Resin Casts, Exterior
Paints, Mica Pigments



Modrak, Judith. *Endangered Fossils*. Slide 1 of 2.



Modrak, Judith. *Endangered Fossils*. Slide 2 of 2.

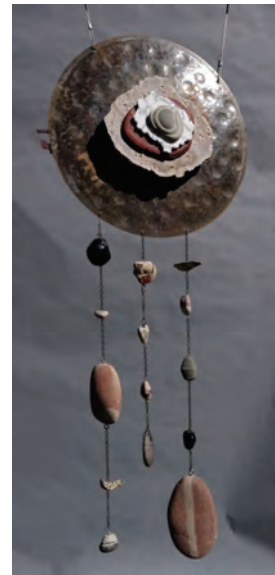
SLIDE 68

Moran, Martha
(Ojai, CA)
The Oracle

Size: 74" tall, 31" wide, 28" deep

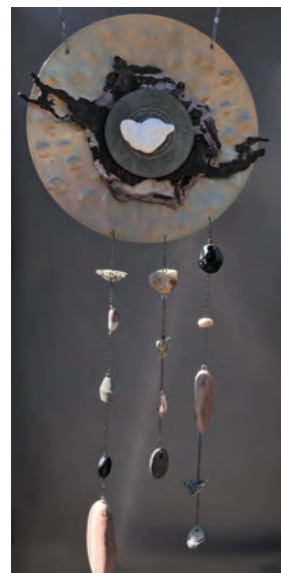
Weight: Unknown

Medium: Petrified Wood, Brass Cymbal,
Copper, Fairy Stones, Semi-precious
Stones



Moran, Martha. *The Oracle*. Slide 1 of 2.

SLIDE 69



Moran, Martha. *The Oracle*. Slide 2 of 2.

Mueller, Greg
(Lutsen Mountain, MN)
Pathway Parabola

Size: 12' tall, 9' wide, 4' deep

Weight: Unknown

Medium: Unknown



Mueller, Greg. *Pathway Parabola*. Slide 1 of 2.



Mueller, Greg. *Pathway Parabola*. Slide 2 of 2.

Neumann, Matthias
(Brooklyn, NY)
Basics #41

Size: 9' tall, 4' wide, 5' deep

Weight: 1,100 pounds

Medium: Wood



Rench, C.J.
(Hood River, OR)
Constellations

Size: 8' tall, 4' wide, 30' deep

Weight: 85 pounds

Medium: Mild Steel



Rench, C.J. *Constellations*. Slide 1 of 2.



Rench, C.J. *Constellations*. Slide 2 of 2.

SLIDE 75

Rieman, Steven L.
(Yucca Valley, CA)
Man & Woman of Steel

Size: 7' tall, 8' wide, 2' deep

Weight: 250 pounds each

Medium: Steel, Rusted Steel



Rieman, Steven L. *Man & Woman of Steel*. Slide 1 of 2.



SLIDE 76



Rieman, Steven L. *Man & Woman of Steel*. Slide 2 of 2.

Sackett, Joe Forrest
(Albuquerque, NM)
Eve

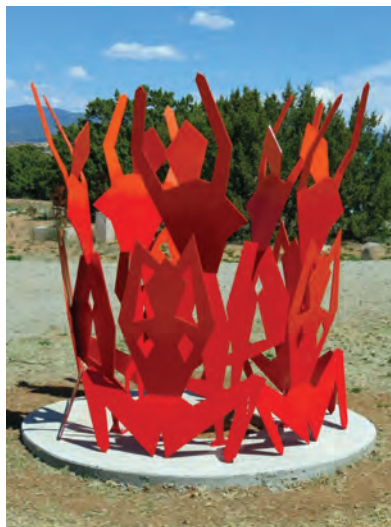
Size: 80" tall, 72" wide, 72" deep

Weight: 1,000 pounds

Medium: Painted Steel Plate



Sackett, Joe Forrest. *Eve*. Slide 1 of 2.



Sackett, Joe Forrest. *Eve*. Slide 2 of 2.

Sakoulas, Thomas
(Oneonta, NY)
Finding Doric Flutes

Size: 4' tall, 2.5' wide, 4.5' deep

Weight: 100 pounds

Medium: Aluminum



SLIDE 80

Sterling-Randall, Jaydon
(Vista, CA)
Integration

Size: 9' tall, 5' wide, 4' deep

Weight: 800 pounds

Medium: Corten Steel



Sterling-Randall, Jaydon. *Integration*. Slide 1 of 2.

SLIDE 81



Sterling-Randall, Jaydon. *Integration*. Slide 2 of 2.

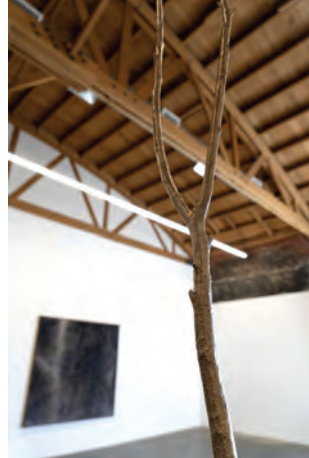
SLIDE 82

Sternberg, Cole
(Los Angeles, CA)
in the forest during that
time of golden leisure

Size: 137" tall, 13" wide

Weight: 60 pounds

Medium: Bronze



Sternberg, Cole. *in the forest during that time of golden leisure*. Slide 1 of 2.

SLIDE 83



Sternberg, Cole. *in the forest during that time of golden leisure*. Slide 2 of 2.

Susnea Litman, Adrian
(Santa Rosa, CA)
Magic Birds

Size: Bench 18" tall, 48" long, 16" deep
Birds 8' tall, 48" wide

Weight: 200 pounds

Medium: Corten Steel



Susnea Litman, Adrian. *Magic Birds*. Slide 1 of 2.



Susnea Litman, Adrian. *Magic Birds*. Slide 2 of 2.

SLIDE 86

**Vader, Patricia
(Martinez, CA)
*Take Heart***

Size: 127" tall, 54" wide, 54" deep

Weight: 150 pounds

Medium: Powder Coated Steel



Vader, Patricia. *Take Heart*. Slide 1 of 2.

SLIDE 87



Vader, Patricia. *Take Heart*. Slide 2 of 2.

**SUBMISSIONS RULED
INELIGIBLE
(5)**

*missing information has been requested from artists



Gray, Craig
(Key West, FL)
A Novel Idea

Size: Unknown

Weight: Unknown

Medium: Granite



Gray, Craig. *A Novel Idea*. Slide 1 of 2.



Gray, Craig. *A Novel Idea*. Slide 2 of 2.

Mrzyglod, Anna
(Dusseldorf, Germany)
The Knot

Size: 200 x 40 cm

Weight: 600 kg

Medium: Spruce



Mrzyglod, Anna. *The Knot*. Slide 1 of 2.



Mrzyglod, Anna. *The Knot*. Slide 2 of 2.

Paul, Dennis
(Long Beach, CA)
Golemess V - Protectress
of Earth's Mother, Gaia

Size: Unknown

Weight: Unknown

Medium: Earth, Sand, Water, Local
Plant Material



Paul, Dennis. *Golemess V – Protectress of Earth's Mother, Gaia*. Slide 1 of 2.



Paul, Dennis. *Golemess V – Protectress of Earth's Mother, Gaia*. Slide 2 of 2.

Seese, Kirk
(Lutherville-Timonium, MD)
Pluma Sculptura aka The Feather

Size: 10' tall, CNC Panels 4' tall, 22" wide, ¾" deep

Weight:

Medium: Welded Tubular Steel, CNC Panels, MDO Board, Acrylic Clear Coat



Seese, Kirk. *Pluma Sculptura aka The Feather*. Slide 1 of 2.



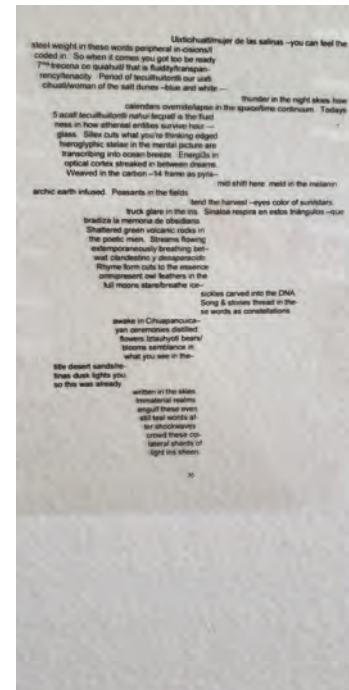
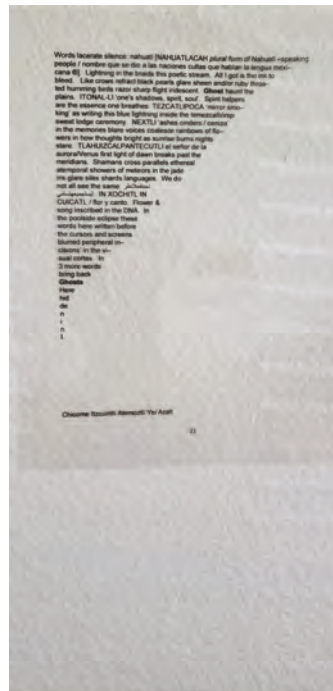
Seese, Kirk. *Pluma Sculptura aka The Feather*. Slide 2 of 2.

Trejo-Maya, Jose (Baldwin Park, CA) *Transparencies in Time*

Size: 8.5" tall, 11" wide

Weight: n/a

Medium: Plastic Transparencies



Trejo-Maya, Jose. *Transparencies in Time*. Slide 1 of 2.



Trejo-Maya, Jose. *Transparencies in Time*. Slide 2 of 2.

NEXT STAGES



THANK YOU!

