

City Council Ad Hoc Redistricting Committee Recommendation



City Council Study Session
February 8, 2022

Community Development
Department





Role of Council Ad-Hoc Committee

- Review Census 2020 Data Results and Redistricting Mapping Options Per the City Charter and Fair Maps Act of 2020
- Receive and Consider Public Input
- Report Recommended Map(s) back to City Council for Final Adoption

City Charter Section 1005



- Every 10 Years (following the National Census)
- Council-appointed Redistricting Ad-Hoc Committee
- Districts must be “fair and logical”
- Districts must provide “contiguous and compact territories”
- Districts must provide “fair representation”

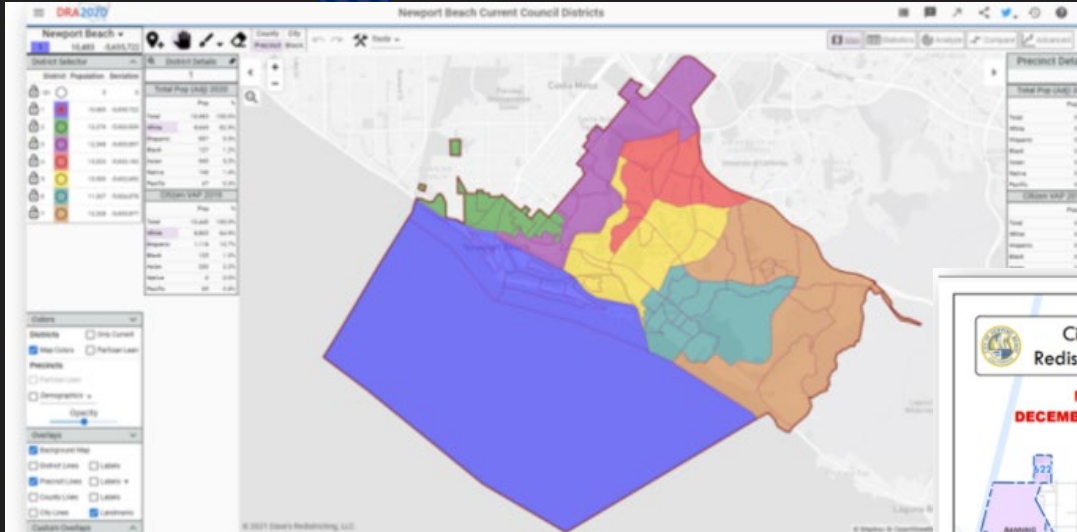


FAIR MAPS Act 2020 (AB 849) Requirements

- Adopt New Maps by **April 15, 2022**
- Four (4) Public Hearings
- Close to Equal Population Per District
- Geographically Contiguous
- Undivided Neighborhoods & “Communities of Interest”
- Easily Identifiable Boundaries
- Compactness

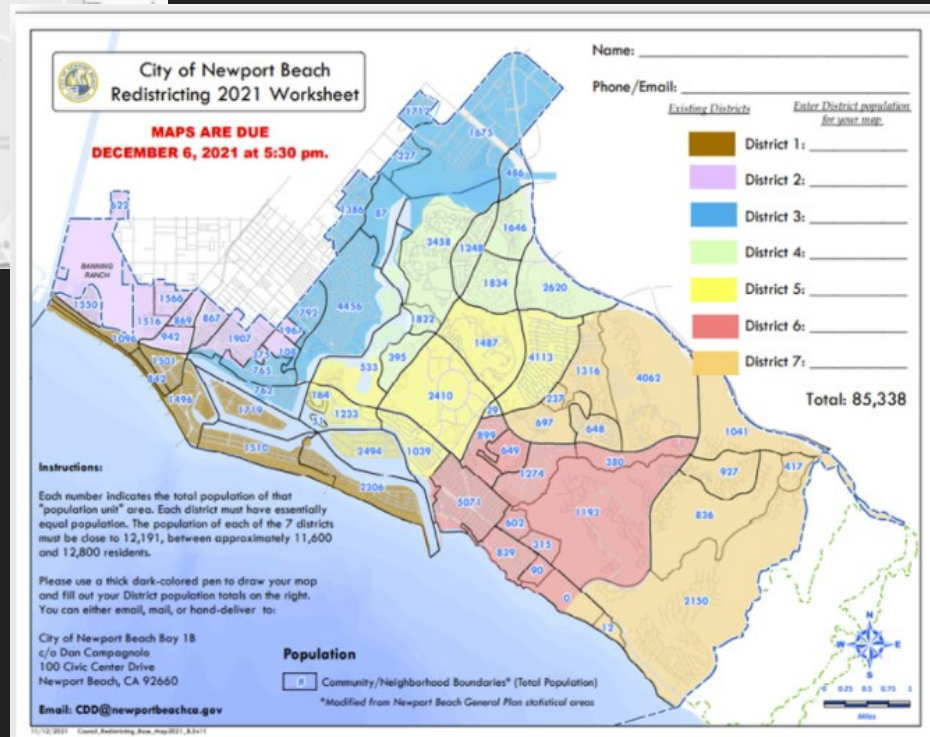


Public Engagement Mapping Options



OPTION 1 –
Online Interactive Mapping Application

OPTION 2 –
Manually Calculate and Draw District Boundaries





Committee's Recommendation

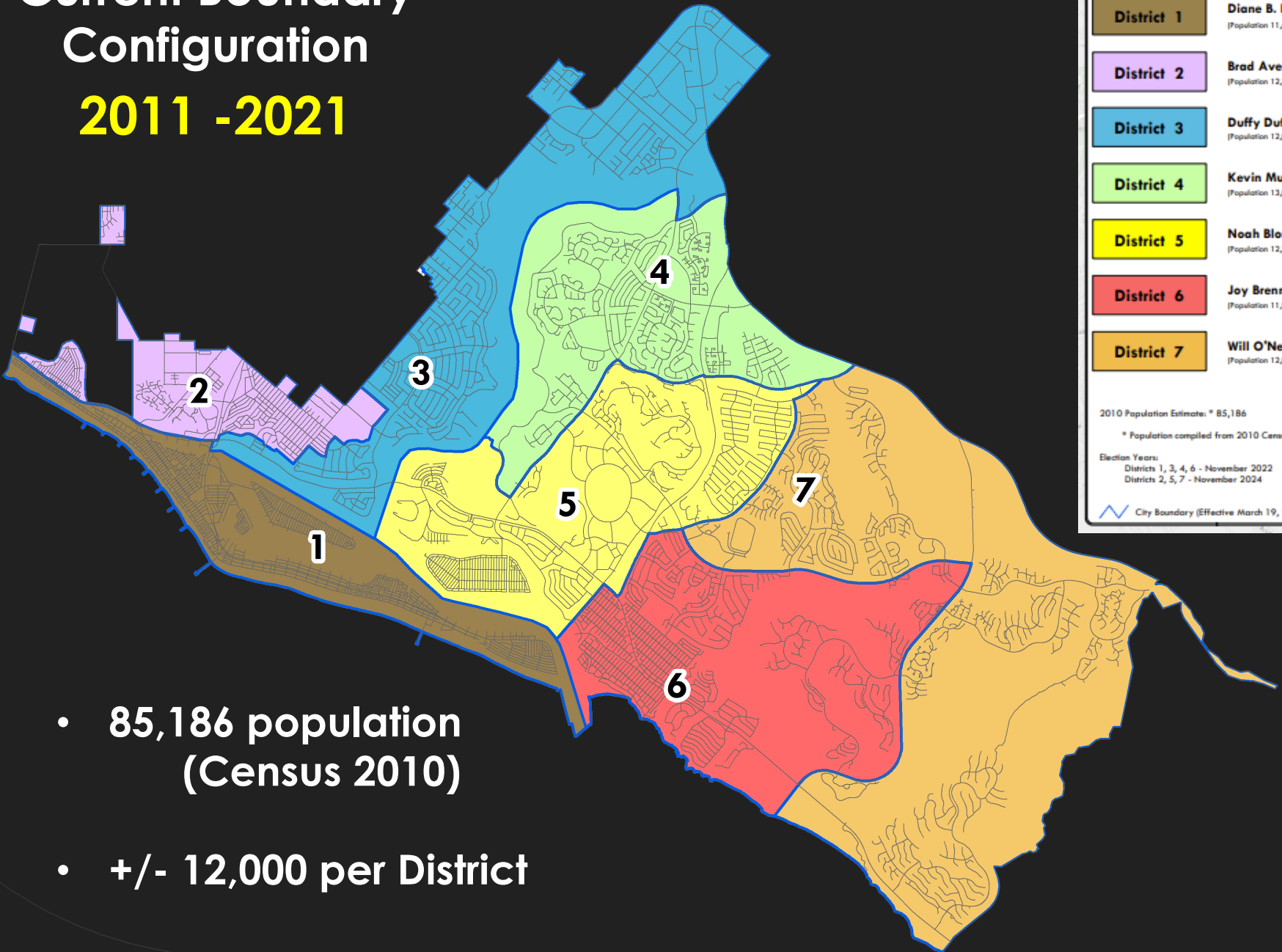


Ad-Hoc Committee's Recommendation

- Bring forth all Fair Map Act 2020 compliant **Maps 1, 2, 3, 5, 6, 7, 8** to share with the City Council.
- Strong recommendation to adopt **Map 1**
- Rebalance **Map 3** if possible.

Current Boundary Configuration

2011 -2021



Current Representatives	
District 1	Diane B. Dixon (Population 11,621)
District 2	Brad Avery (Population 12,208)
District 3	Duffy Duffield (Population 12,084)
District 4	Kevin Muldoon (Population 13,009)
District 5	Noah Blom (Population 12,331)
District 6	Joy Brenner (Population 11,909)
District 7	Will O'Neill (Population 12,024)

2010 Population Estimate: * 85,186
* Population compiled from 2010 Census Data

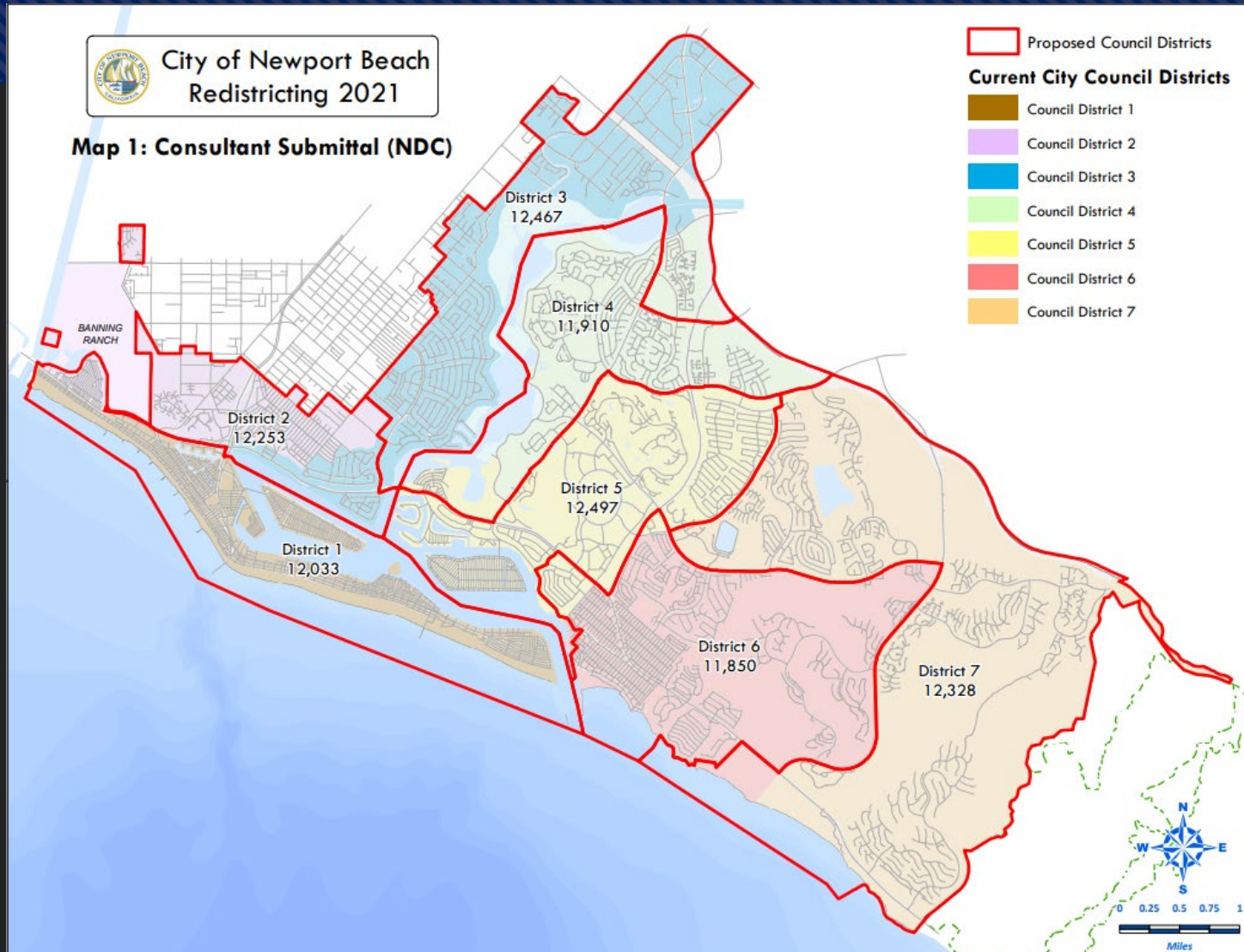
Election Years:
Districts 1, 3, 4, 6 - November 2022
Districts 2, 5, 7 - November 2024

City Boundary (Effective March 19, 2013)

- 85,186 population (Census 2010)
- +/- 12,000 per District

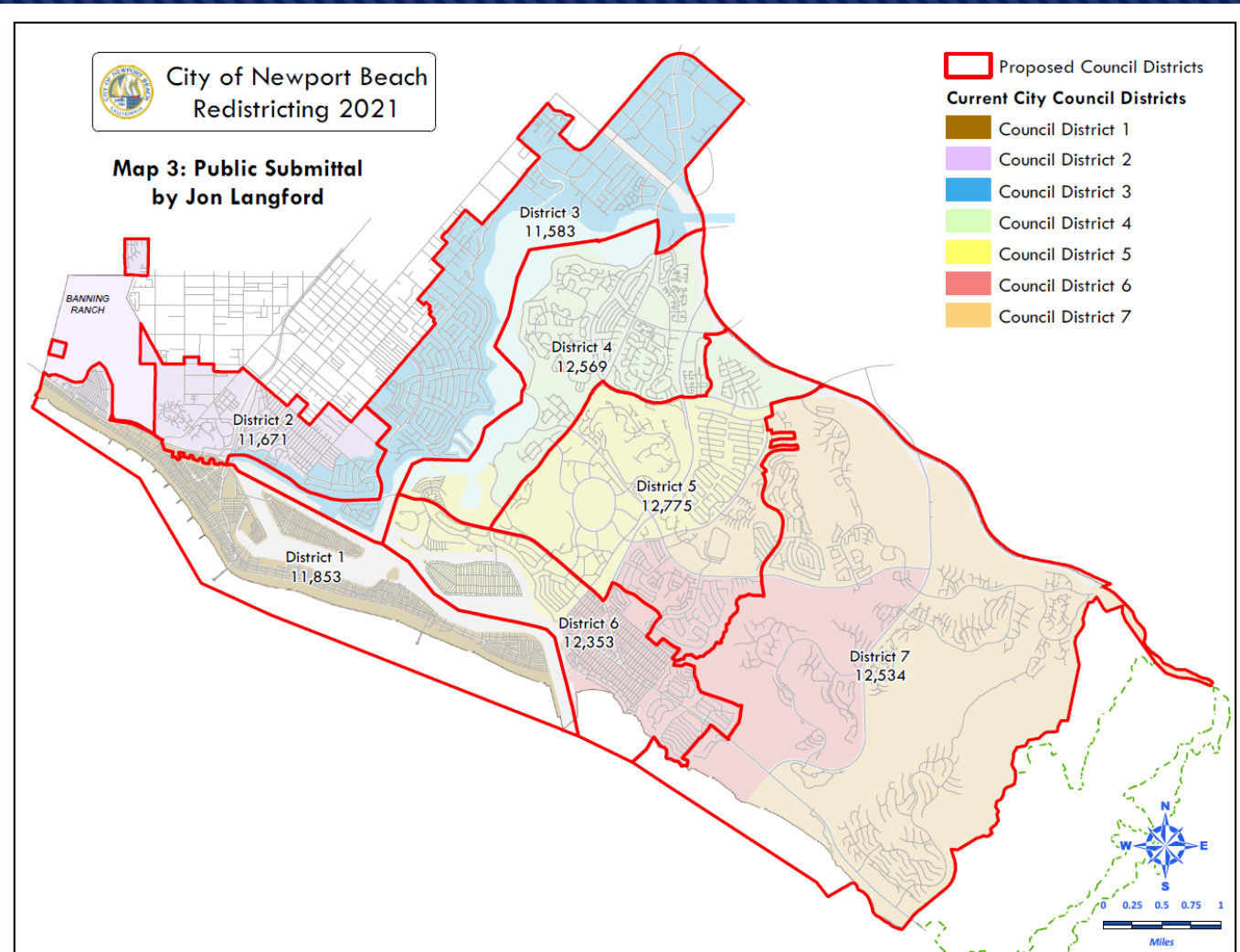
Map 1

Minimal Changes



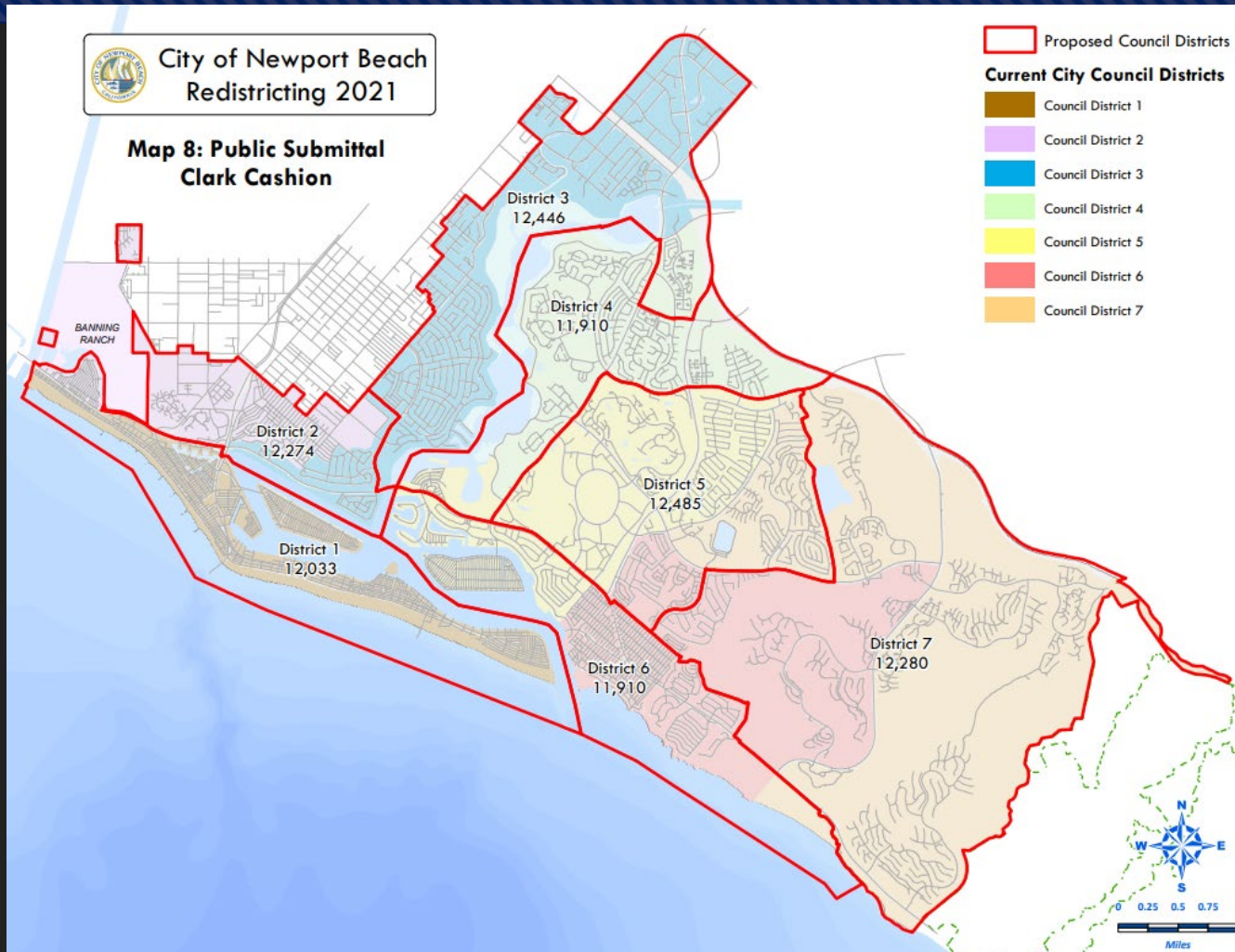
Map 3 10.1% to 9.87%

Population-Re-Balanced



Map 8

Balboa Island + Corona del Mar

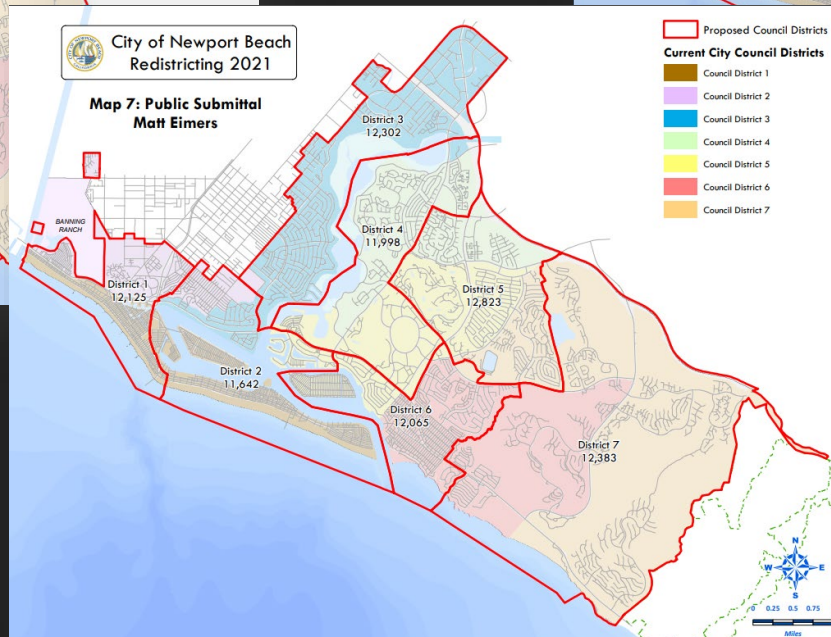
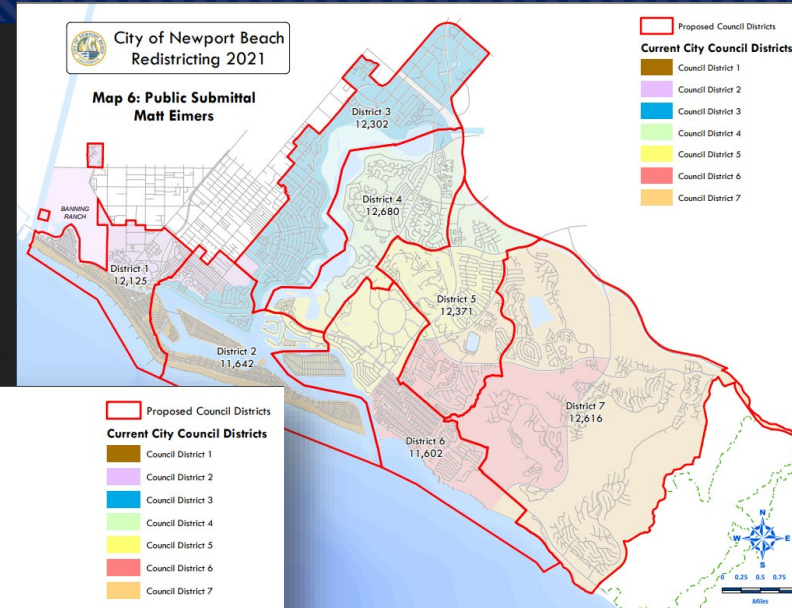
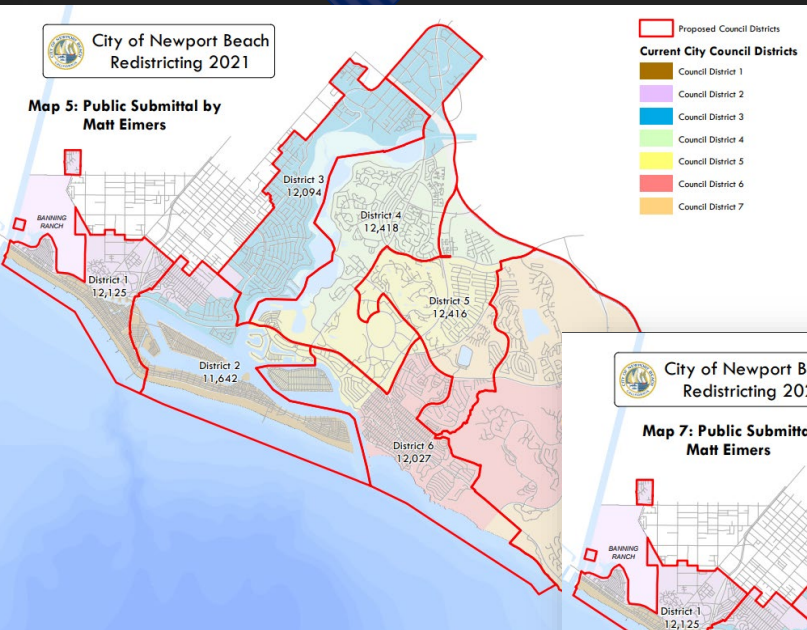


Division at Newport Blvd

Map 5

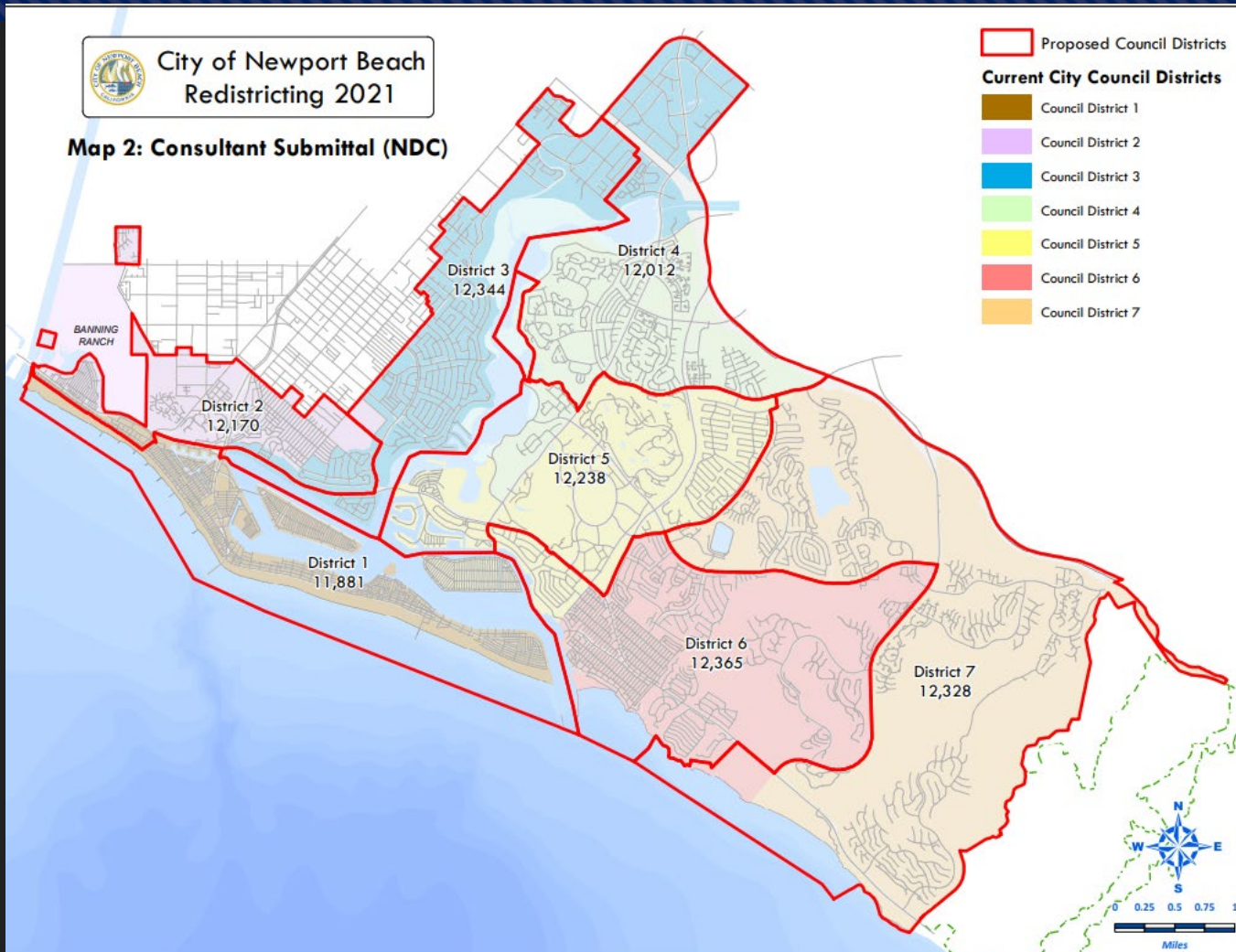
Map 6

Map 7



Map 2

Balboa Island + Peninsula



Public Hearing, Discussion, and Next Steps

- Provide direction to Staff to which map to use
- Staff will return with Draft Ordinance to introduce the final map

Thank you
Questions?

Community Development Department

Dan Campagnolo, Systems & Administration Manager
(949) 644-3231 dcampagnolo@newportbeachca.gov

Justin Levitt, Consultant at National Demographics
Inc. (NDC)

