

District 1 Town Hall

Reliability Presentation

July 19, 2022

Reliability Review Meeting (Balboa Peninsula specific) May 31st, 2022

Annual Reliability Review Meeting (City of Newport Beach) June 9th, 2022

Energy for What's AheadSM



Introducing your SCE team for Newport Beach

Shahana Brown – Business Customer Division, Partnerships

Cynthia L. Davis – Business Customer Division, Key Accounts

Armando De La Libertad – Government Relations Manager

Dirk McConnell – Orange Region Regional Manager

Scott Todd – Huntington Beach / Catalina Island District Manager

Justin Parrett – Orange Region Construction Manager

Overview of Newport Beach

Note: The number of customers listed represents the total number of customers on each circuit (not the local jurisdiction).

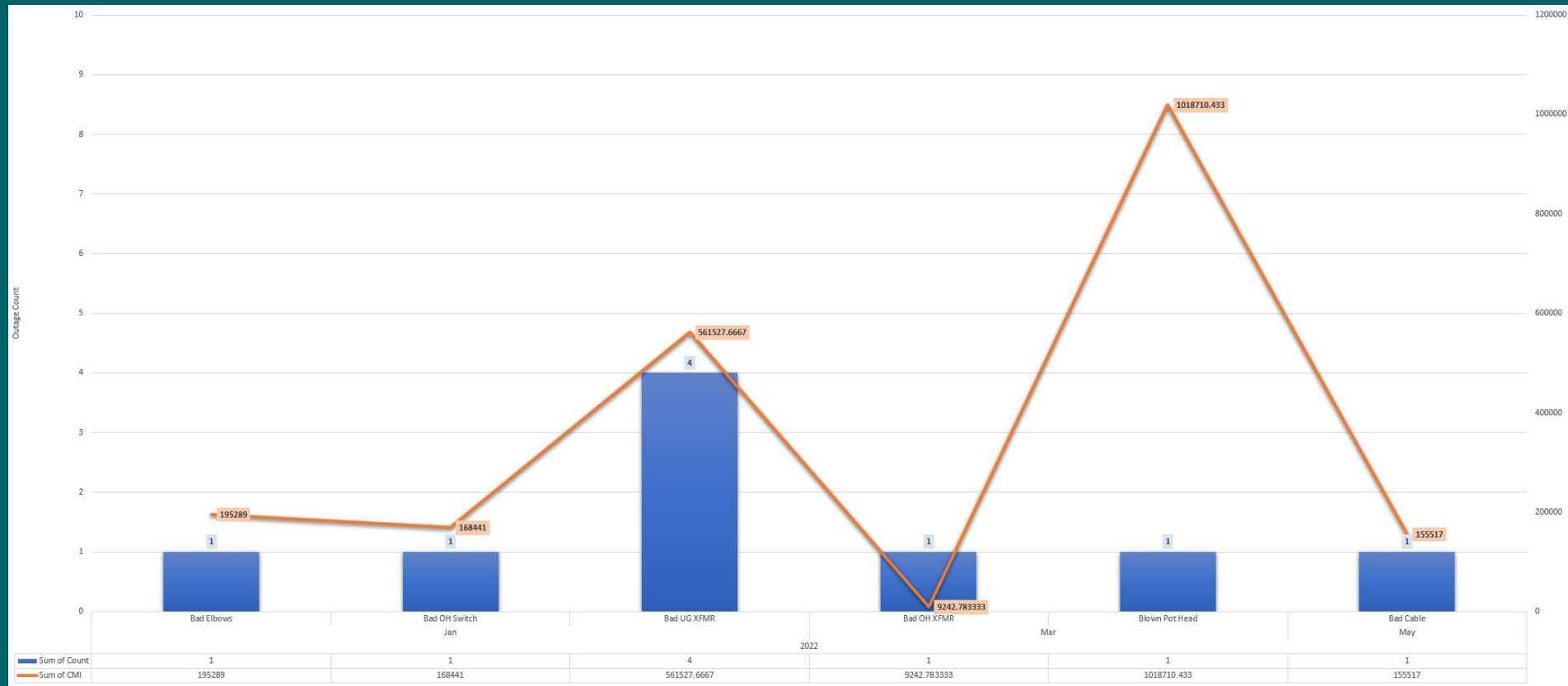
There are 52 circuits that serve Newport Beach

1

Circuit Type	Customers	Circuit Type	Customers	Circuit Type	Customers	Circuit Type	Customers
JANUARY(12KV)	4,751	LITTLER(12KV)	411				
ANNIKA(12KV)	2,412	MANGRUM(12KV)	788				
ARNOLD(12KV)	2,980	MIDDLECOFF(12KV)	2,358				
ATRIUM(12KV)	527	MINOSA(12KV)	448				
BALBOA(12KV)	1,202	MOONWALK(12KV)	3,286				
BERTEA(12KV)	674	NORDINA(4.16KV)	65				
CAPE(4.16KV)	15	OGLE(4.16KV)	861				
CHENUALT(12KV)	492	PENINSULA(12KV)	1,612				
CHURCHILL(12KV)	33	PERCH(12KV)	1,919				
CLIFF(4.16KV)	614	PIKE(12KV)	2,252				
COASTAL(12KV)	2,232	RICHARDS(4.16KV)	231				
CORBINA(12KV)	2,719	ROMMEL(12KV)	1,727				
DOOLITTLE(12KV)	2,288	RUTGERS(12KV)	901				
DUPONT(12KV)	102	SNEAD(12KV)	4,227				
ELMIRA(4.16KV)	14	STILLWELL(12KV)	111				
ELPAC(12KV)	55	TINKER(12KV)	2,852				
FARALLON(12KV)	857	VARDON(12KV)	741				
GEHRIG(12KV)	4,470	WAINWRIGHT(12KV)	724				
GOLDWATER(12KV)	2,592	WINGATE(12KV)	1,245				
GRUNION(12KV)	2,596	XEROX(12KV)	907				
GUNTHER(12KV)	2,969	YELLOWTAIL(12KV)	4,264				
HALSEY(12KV)	733	YACHT(4.16KV)	1,619				
HARPER(4.16KV)	58						
HOGAN(12KV)	3,377						
INLET(4.16KV)	68						
JADE(12KV)	2,161						
JAMBOREE(12KV)	2,376						
KEWAMEE(12KV)	2,020						
KRUEGER(12KV)	2,358						
LA SALLE(12KV)	78						
Grand Total	81,372						

2022 – Emergent / Unplanned Outages

January 12kV & Snead 12kV Circuits (as of 6/9/22)



Energy for What's AheadSM



SOUTHERN CALIFORNIA
EDISON[®]

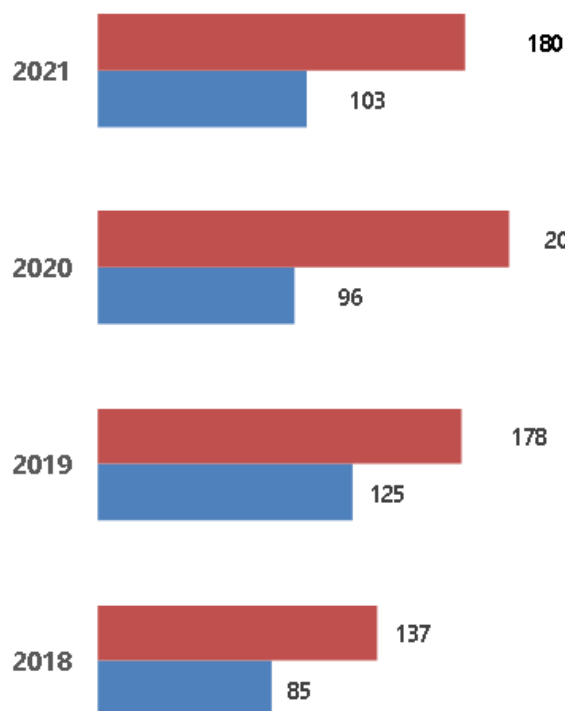
Historical Reliability of Circuits Serving Newport Beach

SAIDI

(the average minutes of sustained interruptions)

43% Less than SCE Grid

4 Year average 41% less than SCE Grid

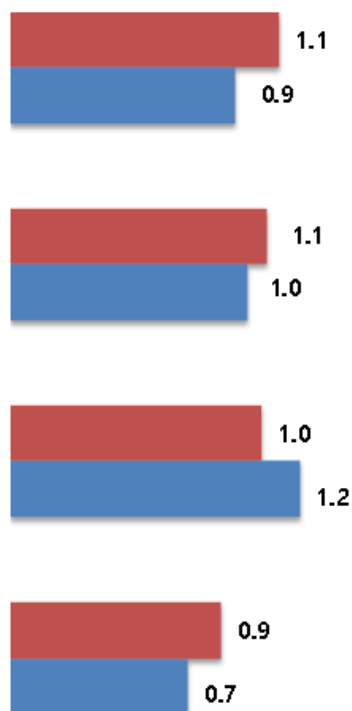


SAIFI

(the average frequency of sustained interruptions)

18% Less than SCE Grid

4 Year average 7% less than SCE Grid

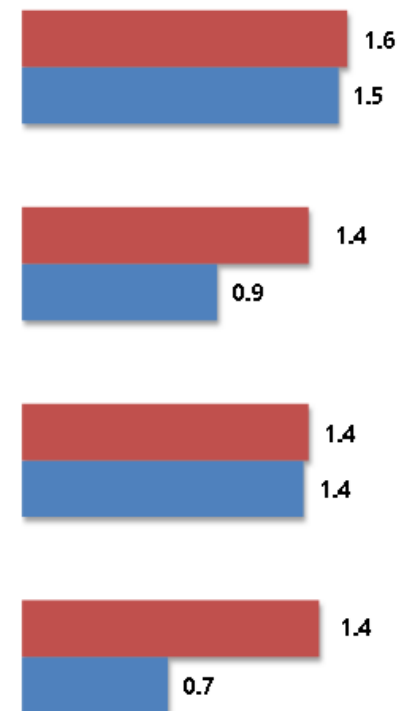


MAIFI

(the average frequency of momentary interruptions)

6% Less than SCE Grid

4 Year average 22% less than SCE Grid



■ SCE GRID

■ Newport Beach

* NO EXCLUSIONS **Data is as of 03/12/2022, data can be slightly different due to outage data validation process

Energy for What's AheadSM



SOUTHERN CALIFORNIA
EDISON[®]

SCE Balboa Peninsula Updates

- 2022 Underground Distribution Inspections (UDI)
 - UDI provides safety & circuit reliability on all electrical distribution facilities for underground systems through routine inspections
 - Expedited all 2022 annual inspections
 - January 12kV (100% completed)
 - 34 Locations
 - Snead 12kV (100% completed)
 - 47 Locations
- Field Engineering analyzing the January 12kV and Snead 12kV
 - Proposing reliability enhancements & requesting budget approval
- Field Engineering & Wire/Structures Engineering strategy team
 - Submarine Cable Replacement
- Technology Integration Group
 - Exploring potential pilot program
 - Battery storage



[illegible]

VICINITY MAP



- [illegible]

SITE ASSUMPTIONS:

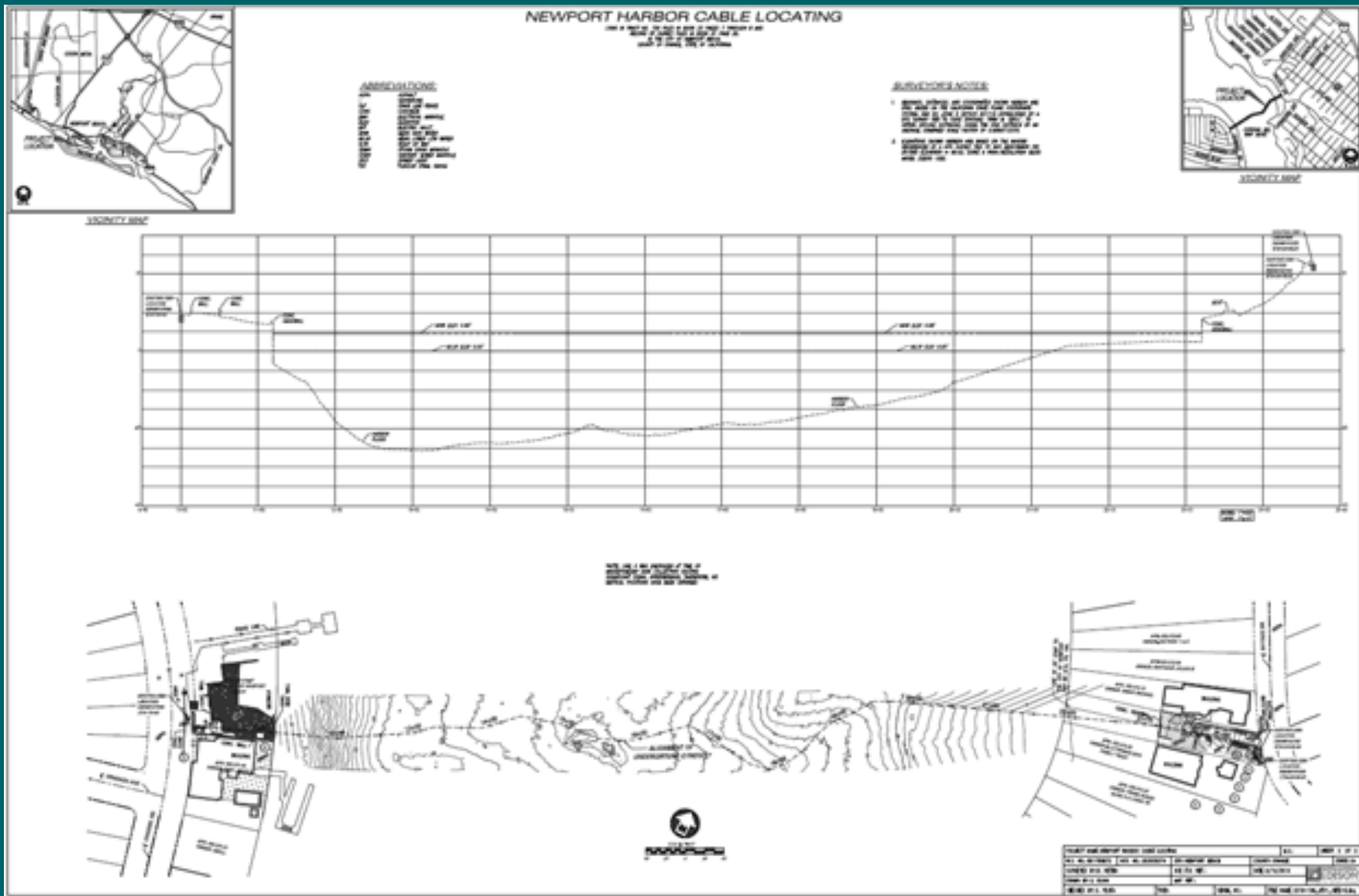
- [illegible]



*** FIGURE 10: ADJUSTED CURE RATES
TO 1990-1991 RATES

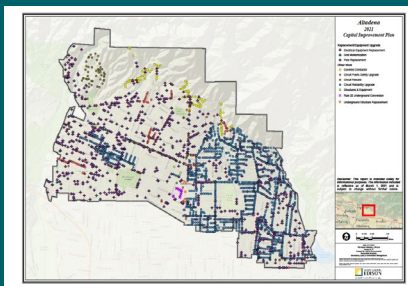
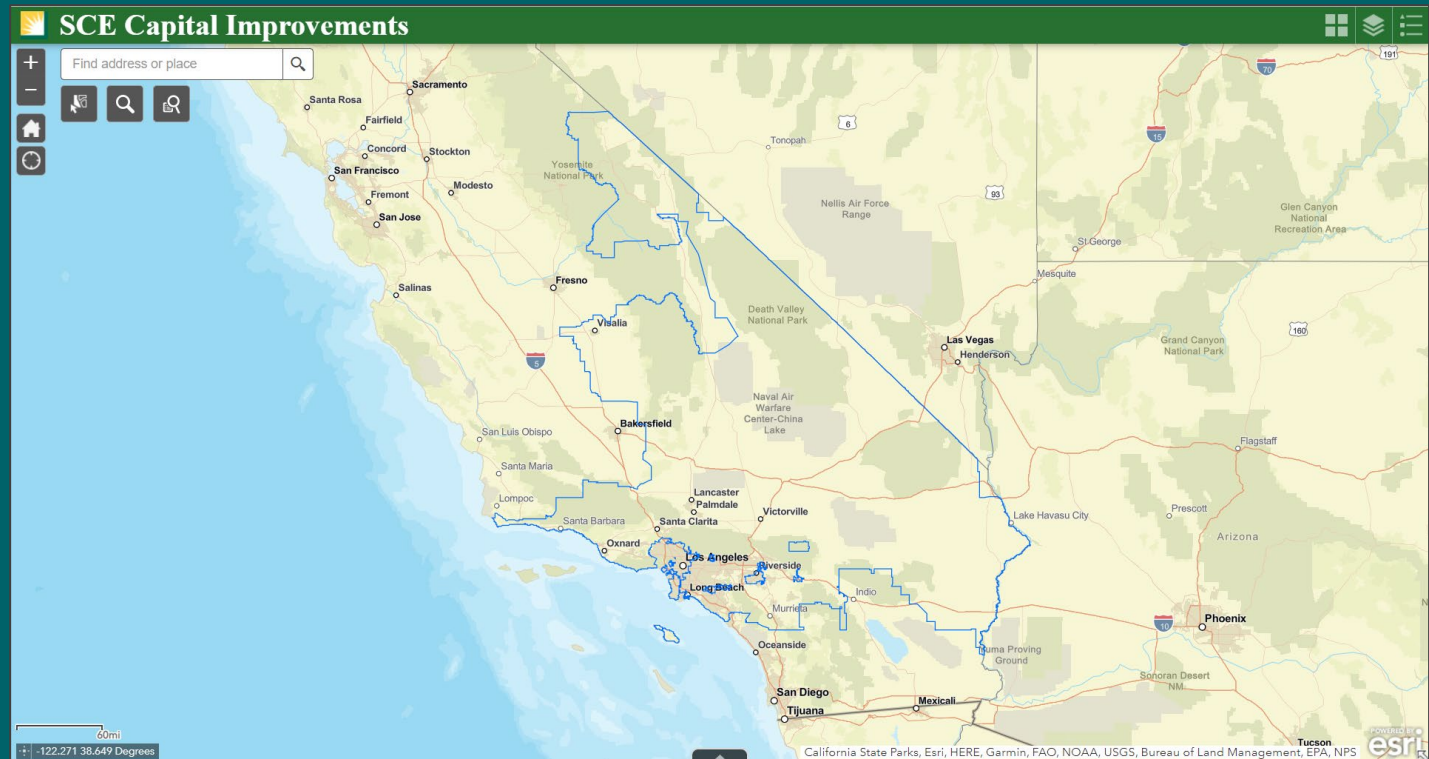
[illegible]

Newport Channel Cable Approximate Location



Capital Improvement Map

The capital improvement map has transitioned to a virtual format and can be accessed using the following link sce.com/CapitalImprovements



Previous version

Potential partnership opportunities with the City of Newport Beach (currently being considered)



Paint curb red in front of structures



Above ground equipment



Thank you for your time
This concludes our presentation



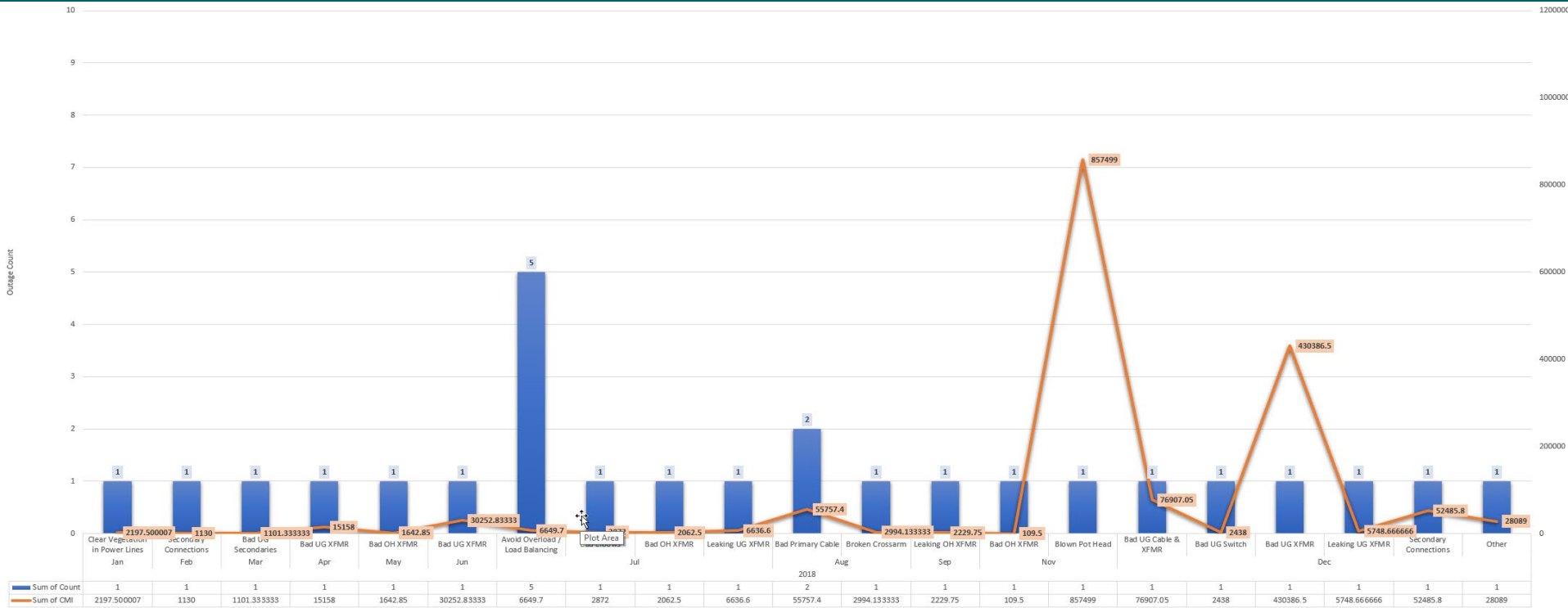
ANY
QUESTIONS
?

Back-up Slides

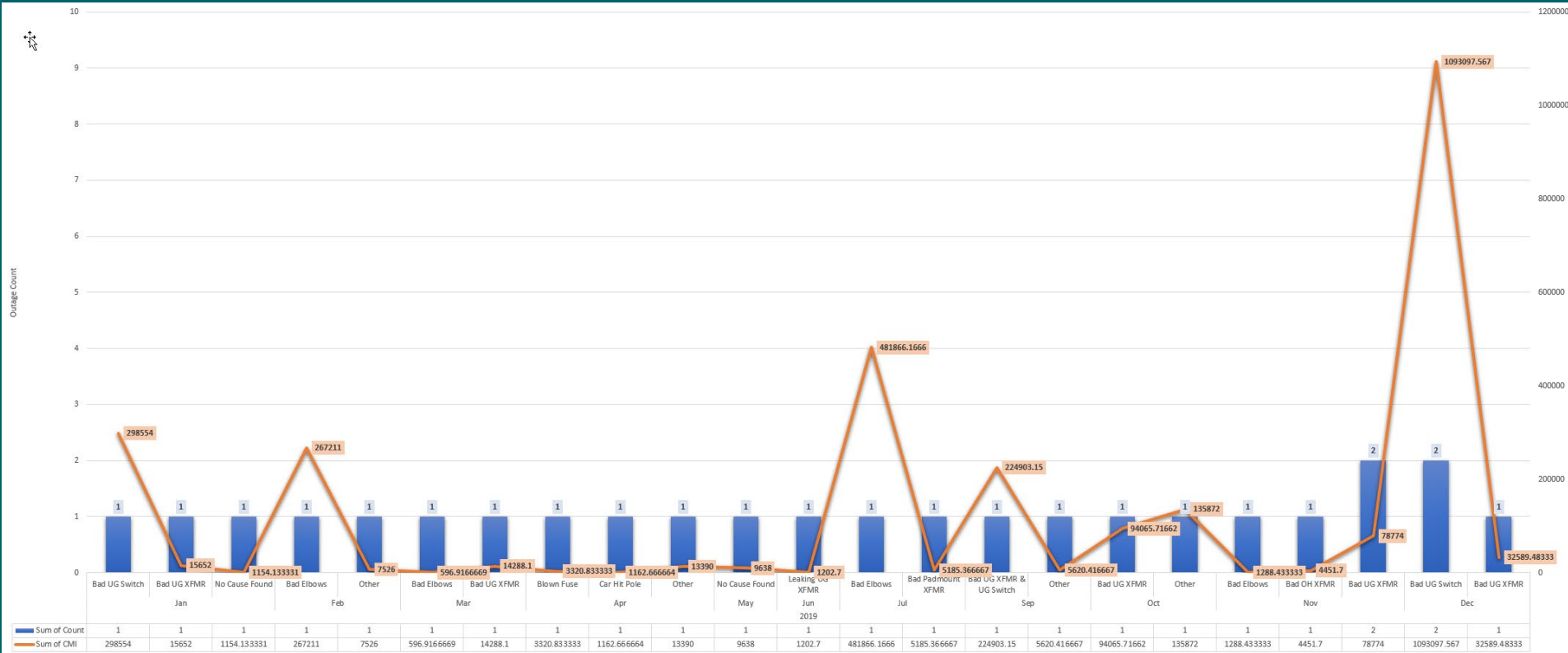
Reliability Histories of Circuits Serving Newport Beach

Updated through Dec 2021

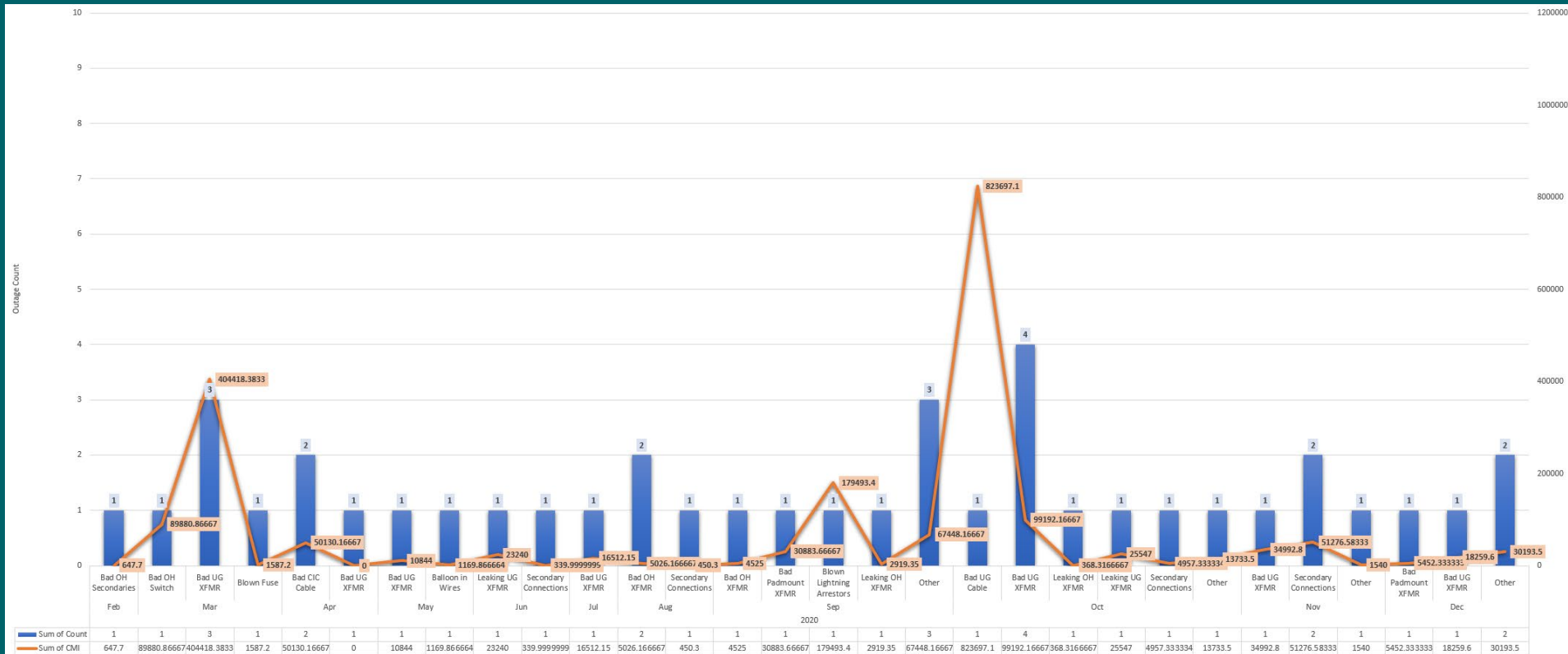
2018 – Emergent / Unplanned Outages



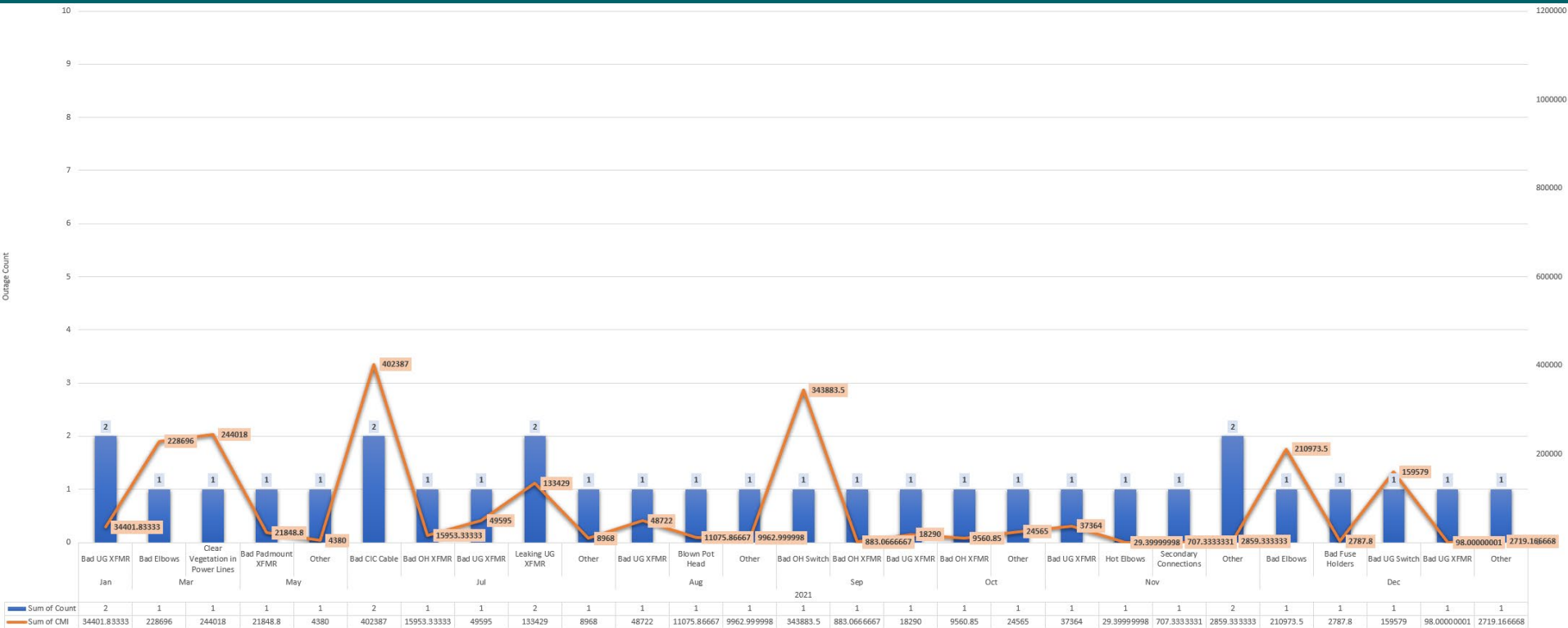
2019 – Emergent / Unplanned Outages



2020 – Emergent / Unplanned Outages



2021 – Emergent / Unplanned Outages



Average Reliability of 52 Circuits Serving Newport Beach

	2018			2019			2020			1st Qtr 2021			2nd Qtr 2021			3rd Qtr 2021			4th Qtr 2021			2021		
	SAIDI	SAIFI	MAIFI	SAIDI	SAIFI	MAIFI	SAIDI	SAIFI	MAIFI	SAIDI	SAIFI	MAIFI	SAIDI	SAIFI	MAIFI	SAIDI	SAIFI	MAIFI	SAIDI	SAIFI	MAIFI	SAIDI	SAIFI	MAIFI
52 Circuits Serving Newport Beach -- Total																								
Customers: 77,163	85.0	0.7	0.7	124.8	1.2	1.4	96.3	1.0	0.9	22.9	0.2	0.2	4.3	0.0	0.2	35.3	0.4	0.5	40.2	0.3	0.6	102.8	0.9	1.5
3rd Party	6%	3%	25%	8%	7%	17%	11%	7%	30%	9%	9%	18%	7%	3%	65%	2%	10%	13%	16%	13%	5%	9%	11%	17%
Equipment Failure	73%	72%	39%	68%	70%	41%	74%	67%	23%	72%	59%	26%	89%	90%	35%	58%	51%	19%	18%	35%	4%	47%	51%	16%
Operation	12%	12%	3%	11%	13%	1%	8%	9%	13%	5%	4%	-	3%	7%	-	10%	16%	14%	38%	30%	8%	19%	17%	8%
Other	2%	3%	5%	11%	5%	17%	4%	14%	12%	2%	5%	-	-	-	-	4%	9%	38%	20%	10%	82%	10%	8%	44%
Vegetation/Animal	1%	1%	12%	0%	1%	21%	0%	0%	19%	13%	22%	44%	-	-	-	2%	3%	14%	0%	1%	-	4%	7%	12%
Weather/Fire/Earthquake	5%	9%	17%	2%	4%	4%	3%	3%	4%	-	-	12%	-	-	-	24%	10%	3%	8%	11%	-	11%	7%	3%
PSPS	-	-	-	-	-	-	-	-	-	-	-	-	-	-	-	-	-	-	-	-	-	-	-	-
SCE SYSTEMWIDE	136.8	0.9	1.4	178.0	1.0	1.4	201.3	1.1	1.4	57.3	0.3	0.4	21.9	0.2	0.4	39.2	0.3	0.3	61.2	0.3	0.4	179.7	1.1	1.6

Notes:

No outages are excluded from the metrics.

Outage Causes:

Other: e.g., patrolled but no cause could be found

Operations: e.g., urgent maintenance w/o 3-day notice to customers

3rd Party: e.g., balloons, car hit pole, dig-in

Vegetation/Animal: e.g., tree branch, rodent, or bird causing short circuit across conductors

PSPS: e.g., Public Safety Power Shutoff

SAIDI (minutes) = the cumulative amount of time the average customer is interrupted by “sustained” (longer than 5 minutes) outages.

SAIFI (interruptions) = the number of times the average customer is interrupted by “sustained” outages.

MAIFI (interruptions) = the number of times the average customer is interrupted by “momentary ” (lasting 5 minutes or less) outages.

Reliability Histories for Individual Circuits Serving Newport Beach - 1 of 13

	2018			2019			2020			1st Qtr 2021			2nd Qtr 2021			3rd Qtr 2021			4th Qtr 2021			2021		
	SAIDI	SAIFI	MAIFI	SAIDI	SAIFI	MAIFI	SAIDI	SAIFI	MAIFI	SAIDI	SAIFI	MAIFI	SAIDI	SAIFI	MAIFI	SAIDI	SAIFI	MAIFI	SAIDI	SAIFI	MAIFI	SAIDI	SAIFI	MAIFI
ANNIKA(12KV) - Customers: 1,811	174.9	1.9	2.1	128.9	1.1	-	108.6	2.3	-	-	-	-	-	-	-	27.3	1.0	-	249.0	0.5	0.6	276.2	1.5	0.6
3rd Party	-	-	-	85%	89%	-	-	-	-	-	-	-	-	-	-	-	-	-	-	-	-	-	-	-
Equipment Failure	64%	84%	54%	12%	10%	-	83%	67%	-	-	-	-	-	-	-	-	-	-	-	-	-	-	-	-
Operation	36%	16%	-	3%	2%	-	0%	0%	-	-	-	-	-	-	-	100%	100%	-	100%	100%	100%	100%	100%	100%
Other	-	-	-	-	-	-	17%	33%	-	-	-	-	-	-	-	-	-	-	-	-	-	-	-	-
Vegetation/Animal	-	-	-	-	-	-	-	-	-	-	-	-	-	-	-	-	-	-	-	-	-	-	-	-
Weather/Fire/Earthquake	-	-	46%	-	-	-	-	-	-	-	-	-	-	-	-	-	-	-	-	-	-	-	-	-
PSPS	-	-	-	-	-	-	-	-	-	-	-	-	-	-	-	-	-	-	-	-	-	-	-	-
ARNOLD(12KV) - Customers: 3,088	0.1	0.0	-	-	-	-	0.1	0.0	-	0.0	0.0	-	1.0	0.0	-	-	-	-	-	-	-	1.0	0.0	-
3rd Party	-	-	-	-	-	-	-	-	-	-	-	-	-	-	-	-	-	-	-	-	-	-	-	-
Equipment Failure	-	-	-	-	-	-	-	-	-	100%	100%	-	100%	100%	-	-	-	-	-	-	-	100%	100%	-
Operation	100%	100%	-	-	-	-	100%	100%	-	-	-	-	-	-	-	-	-	-	-	-	-	-	-	-
Other	-	-	-	-	-	-	-	-	-	-	-	-	-	-	-	-	-	-	-	-	-	-	-	-
Vegetation/Animal	-	-	-	-	-	-	-	-	-	-	-	-	-	-	-	-	-	-	-	-	-	-	-	-
Weather/Fire/Earthquake	-	-	-	-	-	-	-	-	-	-	-	-	-	-	-	-	-	-	-	-	-	-	-	-
PSPS	-	-	-	-	-	-	-	-	-	-	-	-	-	-	-	-	-	-	-	-	-	-	-	-
ATRIUM(12KV) - Customers: 503	46.1	0.3	-	797.2	1.0	1.0	-	-	-	-	-	-	-	-	-	-	-	1.0	14.7	0.1	1.0	14.7	0.1	2.0
3rd Party	-	-	-	-	-	-	-	-	-	-	-	-	-	-	-	-	-	-	-	-	-	-	-	-
Equipment Failure	57%	50%	-	99%	46%	-	-	-	-	-	-	-	-	-	-	-	-	-	100%	100%	-	100%	100%	-
Operation	43%	50%	-	-	-	-	-	-	-	-	-	-	-	-	-	-	-	-	-	-	-	-	-	-
Other	-	-	-	-	-	-	-	-	-	-	-	-	-	-	-	-	-	100%	-	-	100%	-	-	100%
Vegetation/Animal	-	-	-	1%	54%	100%	-	-	-	-	-	-	-	-	-	-	-	-	-	-	-	-	-	-
Weather/Fire/Earthquake	-	-	-	-	-	-	-	-	-	-	-	-	-	-	-	-	-	-	-	-	-	-	-	-
PSPS	-	-	-	-	-	-	-	-	-	-	-	-	-	-	-	-	-	-	-	-	-	-	-	-
BALBOA(12KV) - Customers: 1,143	353.0	2.6	0.2	68.3	1.5	-	27.7	0.0	-	-	-	-	1.5	0.1	-	-	-	1.0	-	-	-	1.5	0.1	1.0
3rd Party	-	-	-	-	-	-	-	-	-	-	-	-	-	-	-	-	-	-	-	-	-	-	-	-
Equipment Failure	93%	84%	100%	88%	78%	-	100%	100%	-	-	-	-	-	-	-	-	-	-	-	-	-	-	-	-
Operation	7%	16%	-	12%	22%	-	-	-	-	-	-	-	100%	100%	-	-	-	-	-	-	-	100%	100%	-
Other	-	-	-	-	-	-	-	-	-	-	-	-	-	-	-	-	-	100%	-	-	-	-	-	100%
Vegetation/Animal	-	-	-	-	-	-	-	-	-	-	-	-	-	-	-	-	-	-	-	-	-	-	-	-
Weather/Fire/Earthquake	-	-	-	-	-	-	-	-	-	-	-	-	-	-	-	-	-	-	-	-	-	-	-	-
PSPS	-	-	-	-	-	-	-	-	-	-	-	-	-	-	-	-	-	-	-	-	-	-	-	-

Reliability Histories for Individual Circuits Serving Newport Beach - 2 of 13

	2018			2019			2020			1st Qtr 2021			2nd Qtr 2021			3rd Qtr 2021			4th Qtr 2021			2021		
	SAIDI	SAIFI	MAIFI	SAIDI	SAIFI	MAIFI	SAIDI	SAIFI	MAIFI	SAIDI	SAIFI	MAIFI	SAIDI	SAIFI	MAIFI	SAIDI	SAIFI	MAIFI	SAIDI	SAIFI	MAIFI	SAIDI	SAIFI	MAIFI
BERTEA(12KV) - Customers: 626	64.2	2.0	1.0	398.4	2.0	1.0	6.2	0.1	0.8	-	-	1.0	-	-	1.0	-	-	-	-	-	1.0	-	-	3.0
3rd Party	-	-	-	-	-	-	-	-	-	-	-	100%	-	-	100%	-	-	-	-	-	-	-	-	67%
Equipment Failure	38%	50%	100%	0%	0%	-	19%	3%	-	-	-	-	-	-	-	-	-	-	-	-	-	-	-	-
Operation	62%	50%	-	-	-	-	1%	2%	-	-	-	-	-	-	-	-	-	-	-	-	-	-	-	-
Other	-	-	-	100%	100%	100%	80%	95%	100%	-	-	-	-	-	-	-	-	-	-	-	100%	-	-	33%
Vegetation/Animal	-	-	-	-	-	-	-	-	-	-	-	-	-	-	-	-	-	-	-	-	-	-	-	-
Weather/Fire/Earthquake	-	-	-	-	-	-	-	-	-	-	-	-	-	-	-	-	-	-	-	-	-	-	-	-
PSPS	-	-	-	-	-	-	-	-	-	-	-	-	-	-	-	-	-	-	-	-	-	-	-	-
CAPE(4.16KV) - Customers:	95.8	0.3	-	227.2	3.2	2.6	1234.9	6.3	-	-	-	-	-	-	-	-	-	-	-	-	-	-	-	-
3rd Party	-	-	-	-	-	32%	-	-	-	-	-	-	-	-	-	-	-	-	-	-	-	-	-	-
Equipment Failure	100%	100%	-	65%	65%	68%	-	-	-	-	-	-	-	-	-	-	-	-	-	-	-	-	-	-
Operation	-	-	-	1%	3%	-	100%	100%	-	-	-	-	-	-	-	-	-	-	-	-	-	-	-	-
Other	-	-	-	34%	32%	-	-	-	-	-	-	-	-	-	-	-	-	-	-	-	-	-	-	-
Vegetation/Animal	-	-	-	-	-	-	-	-	-	-	-	-	-	-	-	-	-	-	-	-	-	-	-	-
Weather/Fire/Earthquake	-	-	-	-	-	-	-	-	-	-	-	-	-	-	-	-	-	-	-	-	-	-	-	-
PSPS	-	-	-	-	-	-	-	-	-	-	-	-	-	-	-	-	-	-	-	-	-	-	-	-
CHENUALT(12KV) - Customers: 224	112.8	2.0	-	9.4	0.1	-	-	-	-	-	-	-	-	-	-	-	-	-	-	-	0.9	-	-	0.9
3rd Party	-	-	-	-	-	-	-	-	-	-	-	-	-	-	-	-	-	-	-	-	-	-	-	-
Equipment Failure	47%	50%	-	-	-	-	-	-	-	-	-	-	-	-	-	-	-	-	-	-	-	-	-	-
Operation	-	-	-	100%	100%	-	-	-	-	-	-	-	-	-	-	-	-	-	-	-	-	-	-	-
Other	-	-	-	-	-	-	-	-	-	-	-	-	-	-	-	-	-	-	-	-	100%	-	-	100%
Vegetation/Animal	-	-	-	-	-	-	-	-	-	-	-	-	-	-	-	-	-	-	-	-	-	-	-	-
Weather/Fire/Earthquake	53%	50%	-	-	-	-	-	-	-	-	-	-	-	-	-	-	-	-	-	-	-	-	-	-
PSPS	-	-	-	-	-	-	-	-	-	-	-	-	-	-	-	-	-	-	-	-	-	-	-	-
CHURCHILL(12KV) - Customers: 36	-	-	-	-	-	-	25.5	1.1	-	-	-	-	77.9	1.0	0.1	-	-	-	-	-	-	77.9	1.0	0.1
3rd Party	-	-	-	-	-	-	-	-	-	-	-	-	-	-	-	-	-	-	-	-	-	-	-	-
Equipment Failure	-	-	-	-	-	-	-	-	-	-	-	-	100%	100%	100%	-	-	-	-	-	-	100%	100%	100%
Operation	-	-	-	-	-	-	-	-	-	-	-	-	-	-	-	-	-	-	-	-	-	-	-	-
Other	-	-	-	-	-	-	100%	100%	-	-	-	-	-	-	-	-	-	-	-	-	-	-	-	-
Vegetation/Animal	-	-	-	-	-	-	-	-	-	-	-	-	-	-	-	-	-	-	-	-	-	-	-	-
Weather/Fire/Earthquake	-	-	-	-	-	-	-	-	-	-	-	-	-	-	-	-	-	-	-	-	-	-	-	-
PSPS	-	-	-	-	-	-	-	-	-	-	-	-	-	-	-	-	-	-	-	-	-	-	-	-

Reliability Histories for Individual Circuits Serving Newport Beach - 3 of 13

	2018			2019			2020			1st Qtr 2021			2nd Qtr 2021			3rd Qtr 2021			4th Qtr 2021			2021		
	SAIDI	SAIFI	MAIFI	SAIDI	SAIFI	MAIFI	SAIDI	SAIFI	MAIFI	SAIDI	SAIFI	MAIFI	SAIDI	SAIFI	MAIFI	SAIDI	SAIFI	MAIFI	SAIDI	SAIFI	MAIFI	SAIDI	SAIFI	MAIFI
CLIFF(4.16KV) - Customers: 622	92.8	1.0	-	15.4	0.1	1.0	644.7	2.7	0.6	30.7	0.1	-	3.4	0.0	2.0	-	-	-	-	-	-	34.1	0.1	2.0
3rd Party	-	-	-	-	-	100%	58%	39%	100%	-	-	-	-	-	100%	-	-	-	-	-	-	-	-	100%
Equipment Failure	100%	100%	-	100%	100%	-	-	-	-	100%	100%	-	-	-	-	-	-	-	-	-	-	90%	75%	-
Operation	-	-	-	-	-	-	-	-	-	-	-	-	100%	100%	-	-	-	-	-	-	-	10%	25%	-
Other	-	-	-	-	-	-	-	-	-	-	-	-	-	-	-	-	-	-	-	-	-	-	-	-
Vegetation/Animal	-	-	-	-	-	-	-	-	-	-	-	-	-	-	-	-	-	-	-	-	-	-	-	-
Weather/Fire/Earthquake	-	-	-	-	-	-	42%	61%	-	-	-	-	-	-	-	-	-	-	-	-	-	-	-	-
PSPS	-	-	-	-	-	-	-	-	-	-	-	-	-	-	-	-	-	-	-	-	-	-	-	-
COASTAL(12KV) - Customers: 2,137	57.8	1.1	1.5	70.9	1.3	6.6	66.5	0.5	0.6	1.3	0.0	-	86.3	1.1	-	7.4	0.1	1.0	5.2	0.1	1.0	100.2	1.3	2.0
3rd Party	-	-	-	-	-	20%	-	-	-	-	-	-	-	-	-	-	-	-	84%	73%	-	4%	5%	-
Equipment Failure	99%	99%	100%	97%	99%	29%	67%	94%	100%	100%	100%	-	100%	100%	-	60%	36%	-	-	-	-	92%	88%	-
Operation	1%	1%	-	0%	0%	-	33%	6%	-	-	-	-	-	-	-	40%	65%	-	16%	27%	-	4%	7%	-
Other	-	-	-	3%	0%	-	-	-	-	-	-	-	-	-	-	-	-	100%	-	-	100%	-	-	100%
Vegetation/Animal	-	-	-	-	-	30%	-	-	-	-	-	-	-	-	-	-	-	-	-	-	-	-	-	-
Weather/Fire/Earthquake	-	-	-	-	-	21%	-	-	-	-	-	-	-	-	-	-	-	-	-	-	-	-	-	-
PSPS	-	-	-	-	-	-	-	-	-	-	-	-	-	-	-	-	-	-	-	-	-	-	-	-
CORBINA(12KV) - Customers: 2,979	35.2	0.3	1.8	2.4	0.1	3.4	23.0	0.1	2.2	-	-	-	-	-	-	17.0	1.0	1.0	15.4	0.1	3.0	32.5	1.2	4.0
3rd Party	-	-	-	-	-	-	33%	39%	-	-	-	-	-	-	-	86%	98%	100%	-	-	-	45%	88%	25%
Equipment Failure	96%	57%	100%	-	-	-	57%	54%	51%	-	-	-	-	-	-	3%	0%	-	-	-	-	2%	0%	-
Operation	4%	43%	-	3%	9%	-	10%	7%	-	-	-	-	-	-	-	-	-	-	25%	3%	-	12%	0%	-
Other	-	-	-	5%	13%	100%	-	-	-	-	-	-	-	-	-	12%	2%	-	42%	66%	100%	26%	8%	75%
Vegetation/Animal	-	-	-	92%	78%	-	-	-	49%	-	-	-	-	-	-	-	-	-	33%	31%	-	16%	3%	-
Weather/Fire/Earthquake	-	-	-	-	-	-	-	-	-	-	-	-	-	-	-	-	-	-	-	-	-	-	-	-
PSPS	-	-	-	-	-	-	-	-	-	-	-	-	-	-	-	-	-	-	-	-	-	-	-	-
DOOLITTLE(12KV) - Customers: 2,233	10.6	0.1	-	14.6	0.2	-	74.5	0.2	-	-	-	1.0	-	-	-	-	-	-	-	-	-	-	-	1.0
3rd Party	-	-	-	-	-	-	-	-	-	-	-	-	-	-	-	-	-	-	-	-	-	-	-	-
Equipment Failure	70%	80%	-	100%	100%	-	95%	69%	-	-	-	-	-	-	-	-	-	-	-	-	-	-	-	-
Operation	30%	20%	-	-	-	-	5%	31%	-	-	-	-	-	-	-	-	-	-	-	-	-	-	-	-
Other	-	-	-	-	-	-	-	-	-	-	-	-	-	-	-	-	-	-	-	-	-	-	-	-
Vegetation/Animal	-	-	-	-	-	-	-	-	-	-	-	-	-	-	-	-	-	-	-	-	-	-	-	-
Weather/Fire/Earthquake	-	-	-	-	-	-	-	-	-	-	-	100%	-	-	-	-	-	-	-	-	-	-	-	100%
PSPS	-	-	-	-	-	-	-	-	-	-	-	-	-	-	-	-	-	-	-	-	-	-	-	-

Reliability Histories for Individual Circuits Serving Newport Beach - 4 of 13

	2018			2019			2020			1st Qtr 2021			2nd Qtr 2021			3rd Qtr 2021			4th Qtr 2021			2021		
	SAIDI	SAIFI	MAIFI	SAIDI	SAIFI	MAIFI	SAIDI	SAIFI	MAIFI	SAIDI	SAIFI	MAIFI	SAIDI	SAIFI	MAIFI	SAIDI	SAIFI	MAIFI	SAIDI	SAIFI	MAIFI	SAIDI	SAIFI	MAIFI
DUPONT(12KV) - Customers: 82	-	-	-	411.5	1.0	-	-	-	-	-	-	0.9	-	-	-	-	-	-	-	-	-	-	-	0.9
3rd Party	-	-	-	-	-	-	-	-	-	-	-	100%	-	-	-	-	-	-	-	-	-	-	-	100%
Equipment Failure	-	-	-	-	-	-	-	-	-	-	-	-	-	-	-	-	-	-	-	-	-	-	-	-
Operation	-	-	-	-	-	-	-	-	-	-	-	-	-	-	-	-	-	-	-	-	-	-	-	-
Other	-	-	-	100%	100%	-	-	-	-	-	-	-	-	-	-	-	-	-	-	-	-	-	-	-
Vegetation/Animal	-	-	-	-	-	-	-	-	-	-	-	-	-	-	-	-	-	-	-	-	-	-	-	-
Weather/Fire/Earthquake	-	-	-	-	-	-	-	-	-	-	-	-	-	-	-	-	-	-	-	-	-	-	-	-
PSPS	-	-	-	-	-	-	-	-	-	-	-	-	-	-	-	-	-	-	-	-	-	-	-	-
ELMIRA(4.16KV) - Customers:	186.6	0.8	1.3	426.9	2.3	-	7.7	0.3	-	-	-	-	-	-	-	-	-	-	-	-	-	-	-	-
3rd Party	-	-	-	64%	51%	-	-	-	-	-	-	-	-	-	-	-	-	-	-	-	-	-	-	-
Equipment Failure	95%	69%	24%	4%	1%	-	100%	100%	-	-	-	-	-	-	-	-	-	-	-	-	-	-	-	-
Operation	5%	31%	-	7%	5%	-	-	-	-	-	-	-	-	-	-	-	-	-	-	-	-	-	-	-
Other	-	-	76%	-	-	-	-	-	-	-	-	-	-	-	-	-	-	-	-	-	-	-	-	-
Vegetation/Animal	-	-	-	-	-	-	-	-	-	-	-	-	-	-	-	-	-	-	-	-	-	-	-	-
Weather/Fire/Earthquake	-	-	-	25%	42%	-	-	-	-	-	-	-	-	-	-	-	-	-	-	-	-	-	-	-
PSPS	-	-	-	-	-	-	-	-	-	-	-	-	-	-	-	-	-	-	-	-	-	-	-	-
ELPAC(12KV) - Customers: 33	-	-	-	283.1	1.0	-	69.0	0.4	0.1	-	-	0.9	-	-	-	-	-	-	-	-	-	-	-	0.9
3rd Party	-	-	-	-	-	-	-	-	-	-	-	100%	-	-	-	-	-	-	-	-	-	-	-	100%
Equipment Failure	-	-	-	-	-	-	100%	100%	100%	-	-	-	-	-	-	-	-	-	-	-	-	-	-	-
Operation	-	-	-	-	-	-	-	-	-	-	-	-	-	-	-	-	-	-	-	-	-	-	-	-
Other	-	-	-	100%	100%	-	-	-	-	-	-	-	-	-	-	-	-	-	-	-	-	-	-	-
Vegetation/Animal	-	-	-	-	-	-	-	-	-	-	-	-	-	-	-	-	-	-	-	-	-	-	-	-
Weather/Fire/Earthquake	-	-	-	-	-	-	-	-	-	-	-	-	-	-	-	-	-	-	-	-	-	-	-	-
PSPS	-	-	-	-	-	-	-	-	-	-	-	-	-	-	-	-	-	-	-	-	-	-	-	-
FARALLON(12KV) - Customers: 486	4.7	0.0	-	80.9	1.0	2.0	0.9	0.0	-	-	-	-	-	-	0.9	-	-	0.9	-	-	0.9	-	-	2.7
3rd Party	-	-	-	-	-	-	-	-	-	-	-	-	-	-	100%	-	-	-	-	-	-	-	-	34%
Equipment Failure	100%	100%	-	100%	100%	-	100%	100%	-	-	-	-	-	-	-	-	-	-	-	-	-	-	-	-
Operation	-	-	-	-	-	-	-	-	-	-	-	-	-	-	-	-	-	-	-	-	-	-	-	-
Other	-	-	-	-	-	-	-	-	-	-	-	-	-	-	-	-	-	100%	-	-	100%	-	-	66%
Vegetation/Animal	-	-	-	-	-	100%	-	-	-	-	-	-	-	-	-	-	-	-	-	-	-	-	-	-
Weather/Fire/Earthquake	-	-	-	-	-	-	-	-	-	-	-	-	-	-	-	-	-	-	-	-	-	-	-	-
PSPS	-	-	-	-	-	-	-	-	-	-	-	-	-	-	-	-	-	-	-	-	-	-	-	-

Reliability Histories for Individual Circuits Serving Newport Beach - 5 of 13

	2018			2019			2020			1st Qtr 2021			2nd Qtr 2021			3rd Qtr 2021			4th Qtr 2021			2021		
	SAIDI	SAIFI	MAIFI	SAIDI	SAIFI	MAIFI	SAIDI	SAIFI	MAIFI	SAIDI	SAIFI	MAIFI	SAIDI	SAIFI	MAIFI	SAIDI	SAIFI	MAIFI	SAIDI	SAIFI	MAIFI	SAIDI	SAIFI	MAIFI
GEHRIG(12KV) - Customers: 4,002	66.5	1.6	1.5	43.0	0.6	0.4	146.1	1.0	4.5	4.0	0.0	-	5.6	0.0	-	0.8	0.0	-	1.7	0.0	-	12.0	0.1	-
3rd Party	-	-	-	-	-	-	89%	94%	60%	63%	65%	-	9%	31%	-	-	-	-	-	-	-	25%	38%	-
Equipment Failure	37%	64%	-	97%	97%	100%	3%	1%	-	-	-	-	90%	50%	-	100%	100%	-	-	-	-	48%	28%	-
Operation	2%	1%	1%	0%	0%	-	7%	3%	40%	37%	35%	-	2%	19%	-	-	-	-	100%	100%	-	27%	34%	-
Other	-	-	-	1%	1%	-	0%	1%	-	-	-	-	-	-	-	-	-	-	-	-	-	-	-	-
Vegetation/Animal	1%	0%	67%	2%	2%	-	-	-	-	-	-	-	-	-	-	-	-	-	-	-	-	-	-	-
Weather/Fire/Earthquake	60%	35%	31%	-	-	-	1%	1%	-	-	-	-	-	-	-	-	-	-	-	-	-	-	-	-
PSPS	-	-	-	-	-	-	-	-	-	-	-	-	-	-	-	-	-	-	-	-	-	-	-	-
GOLDWATER(12KV) - Customers: 2,499	236.7	0.3	-	115.3	0.8	0.5	2.7	0.0	-	8.3	0.1	-	-	-	-	43.9	1.0	-	-	-	-	52.2	1.1	-
3rd Party	2%	7%	-	-	-	-	-	-	-	-	-	-	-	-	-	-	-	-	-	-	-	-	-	-
Equipment Failure	98%	93%	-	98%	90%	100%	71%	48%	-	-	-	-	-	-	-	99%	97%	-	-	-	-	83%	92%	-
Operation	-	-	-	2%	10%	-	29%	52%	-	100%	100%	-	-	-	-	1%	3%	-	-	-	-	17%	8%	-
Other	-	-	-	-	-	-	-	-	-	-	-	-	-	-	-	-	-	-	-	-	-	-	-	-
Vegetation/Animal	-	-	-	-	-	-	-	-	-	-	-	-	-	-	-	-	-	-	-	-	-	-	-	-
Weather/Fire/Earthquake	-	-	-	-	-	-	-	-	-	-	-	-	-	-	-	-	-	-	-	-	-	-	-	-
PSPS	-	-	-	-	-	-	-	-	-	-	-	-	-	-	-	-	-	-	-	-	-	-	-	-
GRUNION(12KV) - Customers: 2,458	-	-	-	7.2	0.0	1.0	11.2	0.1	1.4	0.0	0.0	-	0.5	0.0	-	19.6	0.0	1.0	70.3	0.4	2.0	90.4	0.5	3.0
3rd Party	-	-	-	-	-	-	-	-	-	-	-	-	-	-	-	-	-	-	-	-	-	-	-	-
Equipment Failure	-	-	-	52%	43%	-	21%	4%	-	-	-	-	-	-	-	19%	34%	-	6%	2%	-	9%	4%	-
Operation	-	-	-	48%	57%	-	79%	96%	-	100%	100%	-	100%	100%	-	81%	66%	100%	21%	11%	-	35%	16%	33%
Other	-	-	-	-	-	100%	-	-	55%	-	-	-	-	-	-	-	-	-	72%	87%	100%	56%	80%	67%
Vegetation/Animal	-	-	-	-	-	-	-	-	45%	-	-	-	-	-	-	-	-	-	-	-	-	-	-	-
Weather/Fire/Earthquake	-	-	-	-	-	-	-	-	-	-	-	-	-	-	-	-	-	-	-	-	-	-	-	-
PSPS	-	-	-	-	-	-	-	-	-	-	-	-	-	-	-	-	-	-	-	-	-	-	-	-
GUNTHER(12KV) - Customers: 2,909	27.0	0.2	-	52.1	1.5	-	26.9	0.0	-	0.2	0.0	-	-	-	-	-	-	1.0	1.0	0.0	-	1.3	0.0	1.0
3rd Party	-	-	-	4%	1%	-	30%	25%	-	-	-	-	-	-	-	-	-	-	-	-	-	-	-	-
Equipment Failure	28%	25%	-	0%	0%	-	70%	75%	-	100%	100%	-	-	-	-	-	-	-	-	-	-	17%	7%	-
Operation	72%	75%	-	24%	14%	-	-	-	-	-	-	-	-	-	-	-	-	-	100%	100%	-	83%	93%	-
Other	-	-	-	-	-	-	-	-	-	-	-	-	-	-	-	-	-	100%	-	-	-	-	-	100%
Vegetation/Animal	-	-	-	-	-	-	-	-	-	-	-	-	-	-	-	-	-	-	-	-	-	-	-	-
Weather/Fire/Earthquake	-	-	-	72%	85%	-	-	-	-	-	-	-	-	-	-	-	-	-	-	-	-	-	-	-
PSPS	-	-	-	-	-	-	-	-	-	-	-	-	-	-	-	-	-	-	-	-	-	-	-	-

Reliability Histories for Individual Circuits Serving Newport Beach - 6 of 13

	2018			2019			2020			1st Qtr 2021			2nd Qtr 2021			3rd Qtr 2021			4th Qtr 2021			2021		
	SAIDI	SAIFI	MAIFI	SAIDI	SAIFI	MAIFI	SAIDI	SAIFI	MAIFI	SAIDI	SAIFI	MAIFI	SAIDI	SAIFI	MAIFI	SAIDI	SAIFI	MAIFI	SAIDI	SAIFI	MAIFI	SAIDI	SAIFI	MAIFI
HALSEY(12KV) - Customers: 732	0.8	0.0	-	-	-	-	134.1	2.1	1.0	-	-	-	5.4	0.1	-	-	-	1.0	115.5	2.6	-	120.9	2.7	1.0
3rd Party	-	-	-	-	-	-	-	-	-	-	-	-	-	-	-	-	-	-	-	-	-	-	-	-
Equipment Failure	-	-	-	-	-	-	60%	48%	-	-	-	-	100%	100%	-	-	-	-	-	-	-	4%	4%	-
Operation	100%	100%	-	-	-	-	40%	52%	100%	-	-	-	-	-	-	-	-	-	100%	100%	-	96%	96%	-
Other	-	-	-	-	-	-	-	-	-	-	-	-	-	-	-	-	-	-	-	-	-	-	-	-
Vegetation/Animal	-	-	-	-	-	-	-	-	-	-	-	-	-	-	-	-	-	100%	-	-	-	-	-	100%
Weather/Fire/Earthquake	-	-	-	-	-	-	-	-	-	-	-	-	-	-	-	-	-	-	-	-	-	-	-	-
PSPS	-	-	-	-	-	-	-	-	-	-	-	-	-	-	-	-	-	-	-	-	-	-	-	-
HARPER(4.16KV) - Customers:	-	-	-	191.3	1.0	-	849.2	25.7	-	-	-	-	-	-	-	-	-	-	-	-	-	-	-	-
3rd Party	-	-	-	98%	97%	-	58%	56%	-	-	-	-	-	-	-	-	-	-	-	-	-	-	-	-
Equipment Failure	-	-	-	2%	2%	-	34%	2%	-	-	-	-	-	-	-	-	-	-	-	-	-	-	-	-
Operation	-	-	-	0%	2%	-	8%	42%	-	-	-	-	-	-	-	-	-	-	-	-	-	-	-	-
Other	-	-	-	-	-	-	-	-	-	-	-	-	-	-	-	-	-	-	-	-	-	-	-	-
Vegetation/Animal	-	-	-	-	-	-	-	-	-	-	-	-	-	-	-	-	-	-	-	-	-	-	-	-
Weather/Fire/Earthquake	-	-	-	-	-	-	-	-	-	-	-	-	-	-	-	-	-	-	-	-	-	-	-	-
PSPS	-	-	-	-	-	-	-	-	-	-	-	-	-	-	-	-	-	-	-	-	-	-	-	-
HOGAN(12KV) - Customers: 2,642	1.9	0.0	-	228.8	2.7	1.7	3.6	0.1	1.6	117.4	0.9	0.1	-	-	-	257.4	1.1	-	201.5	1.0	0.9	576.4	3.0	1.0
3rd Party	-	-	-	24%	31%	92%	-	-	-	-	-	-	-	-	-	-	-	-	88%	95%	100%	31%	32%	88%
Equipment Failure	100%	100%	-	76%	69%	8%	100%	100%	-	100%	100%	100%	-	-	-	-	-	-	12%	5%	-	25%	31%	12%
Operation	-	-	-	1%	0%	-	-	-	-	-	-	-	-	-	-	7%	3%	-	0%	1%	-	3%	1%	-
Other	-	-	-	-	-	-	-	-	50%	-	-	-	-	-	-	-	-	-	-	-	-	-	-	-
Vegetation/Animal	-	-	-	-	-	-	-	-	-	-	-	-	-	-	-	-	-	-	-	-	-	-	-	-
Weather/Fire/Earthquake	-	-	-	-	-	-	-	-	50%	-	-	-	-	-	-	93%	97%	-	-	-	-	42%	35%	-
PSPS	-	-	-	-	-	-	-	-	-	-	-	-	-	-	-	-	-	-	-	-	-	-	-	-
INLET(4.16KV) - Customers:	0.1	0.0	1.0	140.5	1.5	3.5	66.5	0.6	-	-	-	-	-	-	-	-	-	-	-	-	-	-	-	-
3rd Party	-	-	-	-	-	-	-	-	-	-	-	-	-	-	-	-	-	-	-	-	-	-	-	-
Equipment Failure	-	-	99%	100%	100%	75%	-	-	-	-	-	-	-	-	-	-	-	-	-	-	-	-	-	-
Operation	100%	100%	1%	-	-	-	100%	100%	-	-	-	-	-	-	-	-	-	-	-	-	-	-	-	-
Other	-	-	-	-	-	25%	-	-	-	-	-	-	-	-	-	-	-	-	-	-	-	-	-	-
Vegetation/Animal	-	-	-	-	-	-	-	-	-	-	-	-	-	-	-	-	-	-	-	-	-	-	-	-
Weather/Fire/Earthquake	-	-	-	-	-	-	-	-	-	-	-	-	-	-	-	-	-	-	-	-	-	-	-	-
PSPS	-	-	-	-	-	-	-	-	-	-	-	-	-	-	-	-	-	-	-	-	-	-	-	-

Reliability Histories for Individual Circuits Serving Newport Beach - 7 of 13

	2018			2019			2020			1st Qtr 2021			2nd Qtr 2021			3rd Qtr 2021			4th Qtr 2021			2021		
	SAIDI	SAIFI	MAIFI	SAIDI	SAIFI	MAIFI	SAIDI	SAIFI	MAIFI	SAIDI	SAIFI	MAIFI	SAIDI	SAIFI	MAIFI	SAIDI	SAIFI	MAIFI	SAIDI	SAIFI	MAIFI	SAIDI	SAIFI	MAIFI
JADE(12KV) - Customers: 2,266	57.6	1.1	-	155.8	0.3	2.0	246.6	2.6	0.0	15.1	0.1	-	-	-	-	119.5	1.7	1.6	-	-	1.0	134.6	1.7	2.6
3rd Party	-	-	-	-	-	-	-	-	-	-	-	-	-	-	-	-	-	-	-	-	-	-	-	-
Equipment Failure	100%	100%	-	16%	46%	-	70%	58%	22%	95%	50%	-	-	-	-	42%	14%	-	-	-	-	48%	15%	-
Operation	-	-	-	0%	5%	-	3%	2%	78%	5%	50%	-	-	-	-	35%	61%	-	-	-	-	31%	60%	-
Other	-	-	-	84%	49%	-	27%	40%	-	-	-	-	-	-	-	-	-	64%	-	-	100%	-	-	78%
Vegetation/Animal	-	-	-	-	-	100%	-	-	-	-	-	-	-	-	-	24%	26%	36%	-	-	-	21%	25%	22%
Weather/Fire/Earthquake	-	-	-	-	-	-	-	-	-	-	-	-	-	-	-	-	-	-	-	-	-	-	-	-
PSPS	-	-	-	-	-	-	-	-	-	-	-	-	-	-	-	-	-	-	-	-	-	-	-	-
JAMBOREE(12KV) - Customers: 2,472	164.6	1.8	-	76.0	0.1	0.0	192.1	3.3	0.3	139.3	1.0	-	-	-	-	47.1	1.0	1.0	24.3	0.0	-	210.6	2.1	1.0
3rd Party	-	-	-	-	-	-	-	-	-	-	-	-	-	-	-	-	-	-	-	-	-	-	-	-
Equipment Failure	94%	89%	-	93%	51%	-	80%	63%	100%	99%	98%	-	-	-	-	-	-	-	98%	70%	-	76%	50%	-
Operation	6%	11%	-	7%	49%	100%	7%	5%	-	1%	2%	-	-	-	-	-	-	-	2%	30%	-	1%	2%	-
Other	-	-	-	-	-	-	13%	31%	-	-	-	-	-	-	-	100%	100%	100%	-	-	-	22%	48%	100%
Vegetation/Animal	-	-	-	-	-	-	-	-	-	-	-	-	-	-	-	-	-	-	-	-	-	-	-	-
Weather/Fire/Earthquake	-	-	-	-	-	-	-	-	-	-	-	-	-	-	-	-	-	-	-	-	-	-	-	-
PSPS	-	-	-	-	-	-	-	-	-	-	-	-	-	-	-	-	-	-	-	-	-	-	-	-
JANUARY(12KV) - Customers: 4,257	257.8	1.4	1.0	490.6	4.9	5.6	300.6	2.4	0.9	57.2	1.0	2.0	5.1	0.0	-	123.9	1.2	-	49.4	1.6	0.4	235.6	3.8	2.3
3rd Party	-	-	-	-	-	18%	-	-	100%	-	-	-	-	-	-	-	-	-	-	-	-	-	-	-
Equipment Failure	88%	76%	-	96%	94%	64%	98%	91%	-	-	-	-	100%	100%	-	98%	99%	-	99%	98%	100%	75%	72%	16%
Operation	12%	23%	-	4%	1%	-	2%	9%	-	3%	1%	-	-	-	-	2%	1%	-	1%	2%	-	2%	2%	-
Other	0%	0%	-	0%	4%	18%	-	-	-	-	-	-	-	-	-	-	-	-	-	-	-	-	-	-
Vegetation/Animal	-	-	-	-	-	-	-	-	-	97%	99%	100%	-	-	-	-	-	-	-	-	-	24%	26%	84%
Weather/Fire/Earthquake	-	-	100%	-	-	-	-	-	-	-	-	-	-	-	-	-	-	-	-	-	-	-	-	-
PSPS	-	-	-	-	-	-	-	-	-	-	-	-	-	-	-	-	-	-	-	-	-	-	-	-
KEWAMEE(12KV) - Customers: 2,221	5.1	0.1	-	231.3	2.0	2.0	73.2	0.2	0.0	0.0	0.0	-	-	-	-	0.4	0.0	-	191.3	2.0	2.2	191.7	2.0	2.2
3rd Party	-	-	-	-	-	-	-	-	-	-	-	-	-	-	-	-	-	-	-	-	-	-	-	-
Equipment Failure	-	-	-	65%	85%	-	95%	71%	-	-	-	-	-	-	-	-	-	-	-	-	-	-	-	-
Operation	100%	100%	-	34%	12%	1%	5%	29%	100%	100%	100%	-	-	-	-	100%	100%	-	45%	50%	54%	45%	50%	54%
Other	-	-	-	2%	3%	-	-	-	-	-	-	-	-	-	-	-	-	-	-	-	46%	-	-	46%
Vegetation/Animal	-	-	-	-	-	99%	-	-	-	-	-	-	-	-	-	-	-	-	-	-	-	-	-	-
Weather/Fire/Earthquake	-	-	-	-	-	-	-	-	-	-	-	-	-	-	-	-	-	-	55%	50%	-	55%	50%	-
PSPS	-	-	-	-	-	-	-	-	-	-	-	-	-	-	-	-	-	-	-	-	-	-	-	-

Reliability Histories for Individual Circuits Serving Newport Beach - 8 of 13

	2018			2019			2020			1st Qtr 2021			2nd Qtr 2021			3rd Qtr 2021			4th Qtr 2021			2021		
	SAIDI	SAIFI	MAIFI	SAIDI	SAIFI	MAIFI	SAIDI	SAIFI	MAIFI	SAIDI	SAIFI	MAIFI	SAIDI	SAIFI	MAIFI	SAIDI	SAIFI	MAIFI	SAIDI	SAIFI	MAIFI	SAIDI	SAIFI	MAIFI
KRUEGER(12KV) - Customers: 2,387	167.1	2.1	-	-	-	-	0.2	0.0	-	9.6	0.0	-	-	-	-	19.3	0.1	1.0	-	-	-	28.9	0.2	1.0
3rd Party	-	-	-	-	-	-	-	-	-	-	-	-	-	-	-	-	-	-	-	-	-	-	-	-
Equipment Failure	49%	50%	-	-	-	-	-	-	-	81%	67%	-	-	-	-	100%	100%	-	-	-	-	94%	94%	-
Operation	7%	3%	-	-	-	-	100%	100%	-	19%	33%	-	-	-	-	-	-	-	-	-	-	6%	6%	-
Other	-	-	-	-	-	-	-	-	-	-	-	-	-	-	-	-	-	-	-	-	-	-	-	-
Vegetation/Animal	-	-	-	-	-	-	-	-	-	-	-	-	-	-	-	-	-	100%	-	-	-	-	-	100%
Weather/Fire/Earthquake	44%	47%	-	-	-	-	-	-	-	-	-	-	-	-	-	-	-	-	-	-	-	-	-	-
PSPS	-	-	-	-	-	-	-	-	-	-	-	-	-	-	-	-	-	-	-	-	-	-	-	-
LA SALLE(12KV) - Customers: 64	3.8	0.0	-	512.0	2.0	-	-	-	-	-	-	1.0	-	-	-	-	-	-	-	-	-	-	-	1.0
3rd Party	-	-	-	-	-	-	-	-	-	-	-	100%	-	-	-	-	-	-	-	-	-	-	-	100%
Equipment Failure	100%	100%	-	12%	50%	-	-	-	-	-	-	-	-	-	-	-	-	-	-	-	-	-	-	-
Operation	-	-	-	-	-	-	-	-	-	-	-	-	-	-	-	-	-	-	-	-	-	-	-	-
Other	-	-	-	88%	50%	-	-	-	-	-	-	-	-	-	-	-	-	-	-	-	-	-	-	-
Vegetation/Animal	-	-	-	-	-	-	-	-	-	-	-	-	-	-	-	-	-	-	-	-	-	-	-	-
Weather/Fire/Earthquake	-	-	-	-	-	-	-	-	-	-	-	-	-	-	-	-	-	-	-	-	-	-	-	-
PSPS	-	-	-	-	-	-	-	-	-	-	-	-	-	-	-	-	-	-	-	-	-	-	-	-
LITTLER(12KV) - Customers: 392	-	-	-	-	-	-	152.0	0.8	-	-	-	-	-	-	-	-	-	-	-	-	-	-	-	-
3rd Party	-	-	-	-	-	-	-	-	-	-	-	-	-	-	-	-	-	-	-	-	-	-	-	-
Equipment Failure	-	-	-	-	-	-	100%	100%	-	-	-	-	-	-	-	-	-	-	-	-	-	-	-	-
Operation	-	-	-	-	-	-	-	-	-	-	-	-	-	-	-	-	-	-	-	-	-	-	-	-
Other	-	-	-	-	-	-	-	-	-	-	-	-	-	-	-	-	-	-	-	-	-	-	-	-
Vegetation/Animal	-	-	-	-	-	-	-	-	-	-	-	-	-	-	-	-	-	-	-	-	-	-	-	-
Weather/Fire/Earthquake	-	-	-	-	-	-	-	-	-	-	-	-	-	-	-	-	-	-	-	-	-	-	-	-
PSPS	-	-	-	-	-	-	-	-	-	-	-	-	-	-	-	-	-	-	-	-	-	-	-	-
MANGRUM(12KV) - Customers: 611	70.7	1.0	1.0	-	-	-	142.2	3.0	1.5	-	-	-	-	-	-	-	-	-	-	-	-	-	-	-
3rd Party	-	-	-	-	-	-	1%	1%	100%	-	-	-	-	-	-	-	-	-	-	-	-	-	-	-
Equipment Failure	1%	1%	-	-	-	-	99%	99%	-	-	-	-	-	-	-	-	-	-	-	-	-	-	-	-
Operation	-	-	-	-	-	-	-	-	-	-	-	-	-	-	-	-	-	-	-	-	-	-	-	-
Other	-	-	-	-	-	-	-	-	-	-	-	-	-	-	-	-	-	-	-	-	-	-	-	-
Vegetation/Animal	99%	99%	100%	-	-	-	-	-	-	-	-	-	-	-	-	-	-	-	-	-	-	-	-	-
Weather/Fire/Earthquake	-	-	-	-	-	-	-	-	-	-	-	-	-	-	-	-	-	-	-	-	-	-	-	-
PSPS	-	-	-	-	-	-	-	-	-	-	-	-	-	-	-	-	-	-	-	-	-	-	-	-

Reliability Histories for Individual Circuits Serving Newport Beach - 9 of 13

	2018			2019			2020			1st Qtr 2021			2nd Qtr 2021			3rd Qtr 2021			4th Qtr 2021			2021		
	SAIDI	SAIFI	MAIFI	SAIDI	SAIFI	MAIFI	SAIDI	SAIFI	MAIFI	SAIDI	SAIFI	MAIFI	SAIDI	SAIFI	MAIFI	SAIDI	SAIFI	MAIFI	SAIDI	SAIFI	MAIFI	SAIDI	SAIFI	MAIFI
MIDDLECOFF(12KV) - Customers: 1,944	188.6	0.3	1.0	309.7	3.2	1.3	258.7	1.6	2.4	-	-	-	0.9	0.0	-	-	-	-	1.9	0.0	-	2.9	0.0	-
3rd Party	-	-	-	-	-	-	-	-	26%	-	-	-	-	-	-	-	-	-	-	-	-	-	-	-
Equipment Failure	-	-	-	53%	62%	100%	99%	99%	74%	-	-	-	100%	100%	-	-	-	-	-	-	-	32%	14%	-
Operation	100%	100%	100%	47%	38%	-	1%	1%	-	-	-	-	-	-	-	-	-	-	100%	100%	-	68%	86%	-
Other	-	-	-	-	-	-	-	-	-	-	-	-	-	-	-	-	-	-	-	-	-	-	-	-
Vegetation/Animal	-	-	-	-	-	-	-	-	-	-	-	-	-	-	-	-	-	-	-	-	-	-	-	-
Weather/Fire/Earthquake	-	-	-	-	-	-	-	-	-	-	-	-	-	-	-	-	-	-	-	-	-	-	-	-
PSPS	-	-	-	-	-	-	-	-	-	-	-	-	-	-	-	-	-	-	-	-	-	-	-	-
MINOSA(12KV) - Customers: 492	125.6	1.2	-	401.5	1.8	2.0	-	-	-	42.2	0.2	2.8	-	-	-	-	-	1.0	-	-	1.0	42.2	0.2	4.8
3rd Party	-	-	-	-	-	-	-	-	-	-	-	-	-	-	-	-	-	-	-	-	-	-	-	-
Equipment Failure	88%	87%	-	100%	100%	-	-	-	-	100%	100%	100%	-	-	-	-	-	-	-	-	-	100%	100%	58%
Operation	12%	13%	-	-	-	-	-	-	-	-	-	-	-	-	-	-	-	-	-	-	-	-	-	-
Other	-	-	-	-	-	-	-	-	-	-	-	-	-	-	-	-	-	100%	-	-	100%	-	-	42%
Vegetation/Animal	-	-	-	-	-	100%	-	-	-	-	-	-	-	-	-	-	-	-	-	-	-	-	-	-
Weather/Fire/Earthquake	-	-	-	-	-	-	-	-	-	-	-	-	-	-	-	-	-	-	-	-	-	-	-	-
PSPS	-	-	-	-	-	-	-	-	-	-	-	-	-	-	-	-	-	-	-	-	-	-	-	-
MOONWALK(12KV) - Customers: 3,126	15.5	0.1	-	64.6	1.8	0.2	54.2	1.9	1.7	5.8	0.1	-	-	-	1.0	16.2	0.0	0.0	-	-	-	22.0	0.1	1.0
3rd Party	11%	18%	-	-	-	-	1%	0%	-	100%	100%	-	-	-	100%	-	-	-	-	-	-	26%	86%	99%
Equipment Failure	81%	74%	-	17%	55%	-	60%	51%	23%	-	-	-	-	-	-	100%	100%	100%	-	-	-	74%	14%	1%
Operation	4%	1%	-	82%	44%	100%	23%	5%	-	-	-	-	-	-	-	-	-	-	-	-	-	-	-	-
Other	-	-	-	2%	1%	-	15%	44%	22%	-	-	-	-	-	-	-	-	-	-	-	-	-	-	-
Vegetation/Animal	5%	7%	-	-	-	-	-	-	55%	-	-	-	-	-	-	-	-	-	-	-	-	-	-	-
Weather/Fire/Earthquake	-	-	-	-	-	-	-	-	-	-	-	-	-	-	-	-	-	-	-	-	-	-	-	-
PSPS	-	-	-	-	-	-	-	-	-	-	-	-	-	-	-	-	-	-	-	-	-	-	-	-
NORDINA(4.16KV) - Customers:	16.6	0.1	-	305.7	1.3	-	3867.6	7.9	0.0	-	-	-	-	-	-	-	-	-	-	-	-	-	-	-
3rd Party	-	-	-	48%	78%	-	-	-	-	-	-	-	-	-	-	-	-	-	-	-	-	-	-	-
Equipment Failure	-	-	-	52%	22%	-	99%	98%	-	-	-	-	-	-	-	-	-	-	-	-	-	-	-	-
Operation	100%	100%	-	-	-	-	1%	2%	100%	-	-	-	-	-	-	-	-	-	-	-	-	-	-	-
Other	-	-	-	-	-	-	-	-	-	-	-	-	-	-	-	-	-	-	-	-	-	-	-	-
Vegetation/Animal	-	-	-	-	-	-	-	-	-	-	-	-	-	-	-	-	-	-	-	-	-	-	-	-
Weather/Fire/Earthquake	-	-	-	-	-	-	-	-	-	-	-	-	-	-	-	-	-	-	-	-	-	-	-	-
PSPS	-	-	-	-	-	-	-	-	-	-	-	-	-	-	-	-	-	-	-	-	-	-	-	-

Reliability Histories for Individual Circuits Serving Newport Beach - 10 of 13

	2018			2019			2020			1st Qtr 2021			2nd Qtr 2021			3rd Qtr 2021			4th Qtr 2021			2021		
	SAIDI	SAIFI	MAIFI	SAIDI	SAIFI	MAIFI	SAIDI	SAIFI	MAIFI	SAIDI	SAIFI	MAIFI	SAIDI	SAIFI	MAIFI	SAIDI	SAIFI	MAIFI	SAIDI	SAIFI	MAIFI	SAIDI	SAIFI	MAIFI
OGLE(4.16KV) - Customers: 869	0.8	0.0	3.0	2.1	0.0	1.0	178.5	2.3	-	97.0	2.1	1.0	1.2	0.0	1.0	-	-	-	553.2	1.0	-	651.4	3.1	2.1
3rd Party	-	-	-	-	-	100%	-	-	-	-	-	-	-	-	100%	-	-	-	-	-	-	-	-	49%
Equipment Failure	100%	100%	-	100%	100%	-	62%	50%	-	100%	100%	100%	100%	100%	-	-	-	-	-	-	-	15%	68%	51%
Operation	-	-	-	-	-	-	0%	0%	-	-	-	-	-	-	-	-	-	-	-	-	-	-	-	-
Other	-	-	67%	-	-	-	-	-	-	-	-	-	-	-	-	-	-	-	100%	100%	-	85%	32%	-
Vegetation/Animal	-	-	-	-	-	-	-	-	-	-	-	-	-	-	-	-	-	-	-	-	-	-	-	-
Weather/Fire/Earthquake	-	-	33%	-	-	-	38%	50%	-	-	-	-	-	-	-	-	-	-	-	-	-	-	-	-
PSPS	-	-	-	-	-	-	-	-	-	-	-	-	-	-	-	-	-	-	-	-	-	-	-	-
PENINSULA(12KV) - Customers: 1,645	3.4	0.0	-	28.7	0.8	2.0	11.8	1.0	-	-	-	-	-	-	-	-	-	1.0	-	-	1.0	-	-	2.0
3rd Party	-	-	-	-	-	-	-	-	-	-	-	-	-	-	-	-	-	-	-	-	-	-	-	-
Equipment Failure	100%	100%	-	-	-	-	-	-	-	-	-	-	-	-	-	-	-	-	-	-	-	-	-	-
Operation	-	-	-	100%	100%	-	-	-	-	-	-	-	-	-	-	-	-	-	-	-	-	-	-	-
Other	-	-	-	-	-	-	100%	100%	-	-	-	-	-	-	-	-	-	100%	-	-	100%	-	-	100%
Vegetation/Animal	-	-	-	-	-	100%	-	-	-	-	-	-	-	-	-	-	-	-	-	-	-	-	-	-
Weather/Fire/Earthquake	-	-	-	-	-	-	-	-	-	-	-	-	-	-	-	-	-	-	-	-	-	-	-	-
PSPS	-	-	-	-	-	-	-	-	-	-	-	-	-	-	-	-	-	-	-	-	-	-	-	-
PERCH(12KV) - Customers: 1,859	106.5	1.2	-	8.2	0.1	1.0	22.3	0.1	0.9	-	-	-	21.0	0.1	2.9	-	-	-	-	-	1.0	21.0	0.1	3.9
3rd Party	-	-	-	-	-	-	-	-	-	-	-	-	57%	28%	34%	-	-	-	-	-	-	57%	28%	26%
Equipment Failure	23%	13%	-	100%	100%	100%	100%	92%	-	-	-	-	43%	72%	66%	-	-	-	-	-	-	43%	72%	49%
Operation	-	-	-	-	-	-	0%	8%	-	-	-	-	-	-	-	-	-	-	-	-	-	-	-	-
Other	77%	87%	-	-	-	-	-	-	-	-	-	-	-	-	-	-	-	-	-	-	100%	-	-	25%
Vegetation/Animal	-	-	-	-	-	-	-	-	100%	-	-	-	-	-	-	-	-	-	-	-	-	-	-	-
Weather/Fire/Earthquake	-	-	-	-	-	-	-	-	-	-	-	-	-	-	-	-	-	-	-	-	-	-	-	-
PSPS	-	-	-	-	-	-	-	-	-	-	-	-	-	-	-	-	-	-	-	-	-	-	-	-
PIKE(12KV) - Customers: 2,652	7.4	0.2	1.0	22.6	0.1	2.0	8.7	0.0	1.7	43.9	0.3	0.6	0.6	0.0	-	1.4	0.0	2.0	1.0	0.0	2.0	46.8	0.4	4.6
3rd Party	-	-	-	-	-	-	3%	10%	-	99%	99%	100%	-	-	-	100%	100%	50%	-	-	-	96%	90%	36%
Equipment Failure	24%	1%	-	100%	100%	49%	97%	90%	-	-	-	-	-	-	-	-	-	50%	-	-	-	-	-	21%
Operation	33%	90%	-	-	-	-	-	-	-	1%	1%	-	100%	100%	-	-	-	-	100%	100%	-	4%	10%	-
Other	43%	8%	-	-	-	51%	-	-	51%	-	-	-	-	-	-	-	-	-	-	-	100%	-	-	43%
Vegetation/Animal	-	-	100%	-	-	-	-	-	49%	-	-	-	-	-	-	-	-	-	-	-	-	-	-	-
Weather/Fire/Earthquake	-	-	-	-	-	-	-	-	-	-	-	-	-	-	-	-	-	-	-	-	-	-	-	-
PSPS	-	-	-	-	-	-	-	-	-	-	-	-	-	-	-	-	-	-	-	-	-	-	-	-

Reliability Histories for Individual Circuits Serving Newport Beach - 11 of 13

	2018			2019			2020			1st Qtr 2021			2nd Qtr 2021			3rd Qtr 2021			4th Qtr 2021			2021		
	SAIDI	SAIFI	MAIFI	SAIDI	SAIFI	MAIFI	SAIDI	SAIFI	MAIFI	SAIDI	SAIFI	MAIFI	SAIDI	SAIFI	MAIFI	SAIDI	SAIFI	MAIFI	SAIDI	SAIFI	MAIFI	SAIDI	SAIFI	MAIFI
RICHARDS(4.16KV) - Customers: 220	-	-	-	-	-	5.0	1196.3	4.3	3.0	-	-	-	9.0	0.1	-	-	-	1.0	41.4	0.1	-	50.4	0.2	1.0
3rd Party	-	-	-	-	-	20%	-	-	-	-	-	-	-	-	-	-	-	-	-	-	-	-	-	-
Equipment Failure	-	-	-	-	-	60%	91%	71%	34%	-	-	-	100%	100%	-	-	-	-	100%	100%	-	100%	100%	-
Operation	-	-	-	-	-	20%	5%	7%	-	-	-	-	-	-	-	-	-	-	-	-	-	-	-	-
Other	-	-	-	-	-	-	-	-	66%	-	-	-	-	-	-	-	-	100%	-	-	-	-	-	100%
Vegetation/Animal	-	-	-	-	-	-	4%	23%	-	-	-	-	-	-	-	-	-	-	-	-	-	-	-	-
Weather/Fire/Earthquake	-	-	-	-	-	-	-	-	-	-	-	-	-	-	-	-	-	-	-	-	-	-	-	-
PSPS	-	-	-	-	-	-	-	-	-	-	-	-	-	-	-	-	-	-	-	-	-	-	-	-
ROMMEL(12KV) - Customers: 1,764	-	-	-	-	-	-	115.5	1.0	0.4	121.1	1.0	-	-	-	-	-	-	-	-	-	-	121.1	1.0	-
3rd Party	-	-	-	-	-	-	-	-	-	-	-	-	-	-	-	-	-	-	-	-	-	-	-	-
Equipment Failure	-	-	-	-	-	-	100%	100%	100%	100%	100%	-	-	-	-	-	-	-	-	-	-	100%	100%	-
Operation	-	-	-	-	-	-	0%	0%	0%	-	-	-	-	-	-	-	-	-	-	-	-	-	-	-
Other	-	-	-	-	-	-	-	-	-	-	-	-	-	-	-	-	-	-	-	-	-	-	-	-
Vegetation/Animal	-	-	-	-	-	-	-	-	-	-	-	-	-	-	-	-	-	-	-	-	-	-	-	-
Weather/Fire/Earthquake	-	-	-	-	-	-	-	-	-	-	-	-	-	-	-	-	-	-	-	-	-	-	-	-
PSPS	-	-	-	-	-	-	-	-	-	-	-	-	-	-	-	-	-	-	-	-	-	-	-	-
RUTGERS(12KV) - Customers: 971	95.7	1.0	-	6.8	0.8	1.2	35.9	0.9	1.3	32.0	1.0	-	40.9	0.3	0.8	-	-	-	-	-	1.0	72.9	1.3	1.9
3rd Party	-	-	-	-	-	-	-	-	-	-	-	-	-	-	-	-	-	-	-	-	-	-	-	-
Equipment Failure	100%	100%	-	-	-	-	-	-	-	-	-	-	100%	100%	100%	-	-	-	-	-	-	56%	26%	45%
Operation	-	-	-	2%	4%	-	100%	100%	100%	-	-	-	-	-	-	-	-	-	-	-	-	-	-	-
Other	-	-	-	-	-	-	-	-	-	100%	100%	-	-	-	-	-	-	-	-	-	100%	44%	74%	55%
Vegetation/Animal	-	-	-	98%	96%	100%	-	-	-	-	-	-	-	-	-	-	-	-	-	-	-	-	-	-
Weather/Fire/Earthquake	-	-	-	-	-	-	-	-	-	-	-	-	-	-	-	-	-	-	-	-	-	-	-	-
PSPS	-	-	-	-	-	-	-	-	-	-	-	-	-	-	-	-	-	-	-	-	-	-	-	-
SNEAD(12KV) - Customers: 3,404	136.6	1.0	1.3	180.1	3.4	-	131.2	1.3	1.0	70.0	0.8	0.7	1.2	0.0	-	142.2	0.8	1.2	67.7	0.2	0.0	281.2	1.8	1.9
3rd Party	-	-	-	-	-	-	-	-	-	-	-	-	-	-	-	-	-	-	-	-	-	-	-	-
Equipment Failure	98%	85%	99%	55%	70%	-	83%	89%	100%	89%	89%	100%	-	-	-	96%	98%	22%	72%	38%	100%	88%	87%	51%
Operation	2%	15%	1%	45%	30%	-	17%	11%	-	11%	11%	-	100%	100%	-	4%	2%	78%	17%	50%	-	9%	12%	49%
Other	-	-	-	-	-	-	-	-	-	-	-	-	-	-	-	-	-	-	-	-	-	-	-	-
Vegetation/Animal	-	-	-	-	-	-	-	-	-	-	-	-	-	-	-	-	-	-	-	-	-	-	-	-
Weather/Fire/Earthquake	-	-	-	-	-	-	-	-	-	-	-	-	-	-	-	-	-	-	10%	11%	-	2%	1%	-
PSPS	-	-	-	-	-	-	-	-	-	-	-	-	-	-	-	-	-	-	-	-	-	-	-	-

Reliability Histories for Individual Circuits Serving Newport Beach - 12 of 13

	2018			2019			2020			1st Qtr 2021			2nd Qtr 2021			3rd Qtr 2021			4th Qtr 2021			2021		
	SAIDI	SAIFI	MAIFI	SAIDI	SAIFI	MAIFI	SAIDI	SAIFI	MAIFI	SAIDI	SAIFI	MAIFI	SAIDI	SAIFI	MAIFI	SAIDI	SAIFI	MAIFI	SAIDI	SAIFI	MAIFI	SAIDI	SAIFI	MAIFI
STILLWELL(12KV) - Customers: 115	-	-	-	-	-	-	-	-	-	-	-	1.0	-	-	-	-	-	1.0	-	-	-	-	-	2.0
3rd Party	-	-	-	-	-	-	-	-	-	-	-	-	-	-	-	-	-	-	-	-	-	-	-	-
Equipment Failure	-	-	-	-	-	-	-	-	-	-	-	-	-	-	-	-	-	-	-	-	-	-	-	-
Operation	-	-	-	-	-	-	-	-	-	-	-	-	-	-	-	-	-	-	-	-	-	-	-	-
Other	-	-	-	-	-	-	-	-	-	-	-	-	-	-	-	-	-	-	-	-	-	-	-	-
Vegetation/Animal	-	-	-	-	-	-	-	-	-	-	-	-	-	-	-	-	-	100%	-	-	-	-	-	50%
Weather/Fire/Earthquake	-	-	-	-	-	-	-	-	-	-	-	100%	-	-	-	-	-	-	-	-	-	-	-	50%
PSPS	-	-	-	-	-	-	-	-	-	-	-	-	-	-	-	-	-	-	-	-	-	-	-	-
TINKER(12KV) - Customers: 2,994	108.4	0.3	1.7	103.0	0.5	-	114.8	2.2	0.7	6.8	0.1	-	-	-	-	-	-	-	2.3	0.0	-	9.0	0.1	-
3rd Party	-	-	58%	-	-	-	-	-	-	-	-	-	-	-	-	-	-	-	-	-	-	-	-	-
Equipment Failure	86%	81%	42%	87%	65%	-	67%	81%	100%	61%	42%	-	-	-	-	-	-	-	100%	100%	-	71%	45%	-
Operation	14%	19%	-	8%	27%	-	33%	19%	-	39%	58%	-	-	-	-	-	-	-	-	-	-	29%	55%	-
Other	-	-	-	6%	8%	-	-	-	-	-	-	-	-	-	-	-	-	-	-	-	-	-	-	-
Vegetation/Animal	-	-	-	-	-	-	-	-	-	-	-	-	-	-	-	-	-	-	-	-	-	-	-	-
Weather/Fire/Earthquake	-	-	-	-	-	-	-	-	-	-	-	-	-	-	-	-	-	-	-	-	-	-	-	-
PSPS	-	-	-	-	-	-	-	-	-	-	-	-	-	-	-	-	-	-	-	-	-	-	-	-
VARDON(12KV) - Customers: 655	83.4	0.4	1.3	0.8	0.0	1.0	3.7	0.0	-	-	-	-	-	-	-	41.9	0.2	-	-	-	-	41.9	0.2	-
3rd Party	-	-	-	-	-	100%	-	-	-	-	-	-	-	-	-	-	-	-	-	-	-	-	-	-
Equipment Failure	65%	84%	100%	100%	100%	-	-	-	-	-	-	-	-	-	-	98%	70%	-	-	-	-	98%	70%	-
Operation	-	-	-	-	-	-	100%	100%	-	-	-	-	-	-	-	2%	30%	-	-	-	-	2%	30%	-
Other	-	-	-	-	-	-	-	-	-	-	-	-	-	-	-	-	-	-	-	-	-	-	-	-
Vegetation/Animal	35%	16%	-	-	-	-	-	-	-	-	-	-	-	-	-	-	-	-	-	-	-	-	-	-
Weather/Fire/Earthquake	-	-	-	-	-	-	-	-	-	-	-	-	-	-	-	-	-	-	-	-	-	-	-	-
PSPS	-	-	-	-	-	-	-	-	-	-	-	-	-	-	-	-	-	-	-	-	-	-	-	-
WAINWRIGHT(12KV) - Customers: 685	-	-	-	61.7	1.0	-	64.9	0.2	-	-	-	-	0.7	0.0	-	45.6	1.0	-	-	-	-	46.3	1.0	-
3rd Party	-	-	-	-	-	-	-	-	-	-	-	-	-	-	-	-	-	-	-	-	-	-	-	-
Equipment Failure	-	-	-	98%	99%	-	-	-	-	-	-	-	100%	100%	-	100%	100%	-	-	-	-	100%	100%	-
Operation	-	-	-	2%	1%	-	100%	100%	-	-	-	-	-	-	-	0%	0%	-	-	-	-	0%	0%	-
Other	-	-	-	-	-	-	-	-	-	-	-	-	-	-	-	-	-	-	-	-	-	-	-	-
Vegetation/Animal	-	-	-	-	-	-	-	-	-	-	-	-	-	-	-	-	-	-	-	-	-	-	-	-
Weather/Fire/Earthquake	-	-	-	-	-	-	-	-	-	-	-	-	-	-	-	-	-	-	-	-	-	-	-	-
PSPS	-	-	-	-	-	-	-	-	-	-	-	-	-	-	-	-	-	-	-	-	-	-	-	-

Reliability Histories for Individual Circuits Serving Newport Beach - 13 of 13

	2018			2019			2020			1st Qtr 2021			2nd Qtr 2021			3rd Qtr 2021			4th Qtr 2021			2021		
	SAIDI	SAIFI	MAIFI	SAIDI	SAIFI	MAIFI	SAIDI	SAIFI	MAIFI	SAIDI	SAIFI	MAIFI	SAIDI	SAIFI	MAIFI	SAIDI	SAIFI	MAIFI	SAIDI	SAIFI	MAIFI	SAIDI	SAIFI	MAIFI
WINGATE(12KV) - Customers: 1,285	-	-	-	0.1	0.0	-	-	-	-	-	-	-	-	-	-	-	-	1.0	-	-	-	-	-	1.0
3rd Party	-	-	-	-	-	-	-	-	-	-	-	-	-	-	-	-	-	-	-	-	-	-	-	-
Equipment Failure	-	-	-	-	-	-	-	-	-	-	-	-	-	-	-	-	-	-	-	-	-	-	-	-
Operation	-	-	-	100%	100%	-	-	-	-	-	-	-	-	-	-	-	-	-	-	-	-	-	-	-
Other	-	-	-	-	-	-	-	-	-	-	-	-	-	-	-	-	-	-	-	-	-	-	-	-
Vegetation/Animal	-	-	-	-	-	-	-	-	-	-	-	-	-	-	-	-	-	100%	-	-	-	-	-	100%
Weather/Fire/Earthquake	-	-	-	-	-	-	-	-	-	-	-	-	-	-	-	-	-	-	-	-	-	-	-	-
PSPS	-	-	-	-	-	-	-	-	-	-	-	-	-	-	-	-	-	-	-	-	-	-	-	-
XEROX(12KV) - Customers: 968	46.7	0.9	-	670.1	3.0	1.7	-	-	-	-	-	1.0	-	-	-	-	-	-	0.1	0.0	-	0.1	0.0	1.0
3rd Party	-	-	-	-	-	-	-	-	-	-	-	100%	-	-	-	-	-	-	-	-	-	-	-	100%
Equipment Failure	-	-	-	18%	61%	100%	-	-	-	-	-	-	-	-	-	-	-	-	-	-	-	-	-	-
Operation	-	-	-	-	-	-	-	-	-	-	-	-	-	-	-	-	-	-	100%	100%	-	100%	100%	-
Other	-	-	-	82%	39%	-	-	-	-	-	-	-	-	-	-	-	-	-	-	-	-	-	-	-
Vegetation/Animal	100%	100%	-	-	-	-	-	-	-	-	-	-	-	-	-	-	-	-	-	-	-	-	-	-
Weather/Fire/Earthquake	-	-	-	-	-	-	-	-	-	-	-	-	-	-	-	-	-	-	-	-	-	-	-	-
PSPS	-	-	-	-	-	-	-	-	-	-	-	-	-	-	-	-	-	-	-	-	-	-	-	-
YACHT(4.16KV) - Customers: 1,645	-	-	-	63.4	1.7	1.3	0.1	0.0	-	3.4	0.3	-	-	-	-	3.9	0.0	1.7	11.2	0.0	-	18.5	0.4	1.7
3rd Party	-	-	-	-	-	100%	-	-	-	100%	100%	-	-	-	-	-	-	-	-	-	-	18%	92%	-
Equipment Failure	-	-	-	88%	99%	-	100%	100%	-	-	-	-	-	-	-	100%	100%	-	100%	100%	-	82%	8%	-
Operation	-	-	-	12%	1%	-	-	-	-	-	-	-	-	-	-	-	-	-	-	-	-	-	-	-
Other	-	-	-	-	-	-	-	-	-	-	-	-	-	-	-	-	-	60%	-	-	-	-	-	60%
Vegetation/Animal	-	-	-	-	-	-	-	-	-	-	-	-	-	-	-	-	-	-	-	-	-	-	-	-
Weather/Fire/Earthquake	-	-	-	-	-	-	-	-	-	-	-	-	-	-	-	-	-	40%	-	-	-	-	-	40%
PSPS	-	-	-	-	-	-	-	-	-	-	-	-	-	-	-	-	-	-	-	-	-	-	-	-
YELLOWTAIL(12KV) - Customers: 3,955	157.7	1.6	2.6	193.5	0.6	2.1	80.9	1.1	1.4	-	-	-	0.0	0.0	-	45.1	0.7	1.1	84.4	0.1	1.0	129.6	0.8	2.1
3rd Party	59%	28%	100%	2%	3%	-	-	-	52%	-	-	-	-	-	-	-	-	-	-	-	-	-	-	-
Equipment Failure	41%	67%	-	97%	95%	100%	100%	100%	-	-	-	-	-	-	-	100%	100%	100%	2%	2%	-	36%	88%	52%
Operation	0%	5%	-	0%	3%	-	0%	0%	-	-	-	-	100%	100%	-	-	-	-	98%	98%	-	64%	12%	-
Other	-	-	-	-	-	-	-	-	-	-	-	-	-	-	-	-	-	-	-	-	100%	-	-	48%
Vegetation/Animal	-	-	-	-	-	-	-	-	48%	-	-	-	-	-	-	-	-	-	-	-	-	-	-	-
Weather/Fire/Earthquake	-	-	-	-	-	-	-	-	-	-	-	-	-	-	-	-	-	-	-	-	-	-	-	-
PSPS	-	-	-	-	-	-	-	-	-	-	-	-	-	-	-	-	-	-	-	-	-	-	-	-