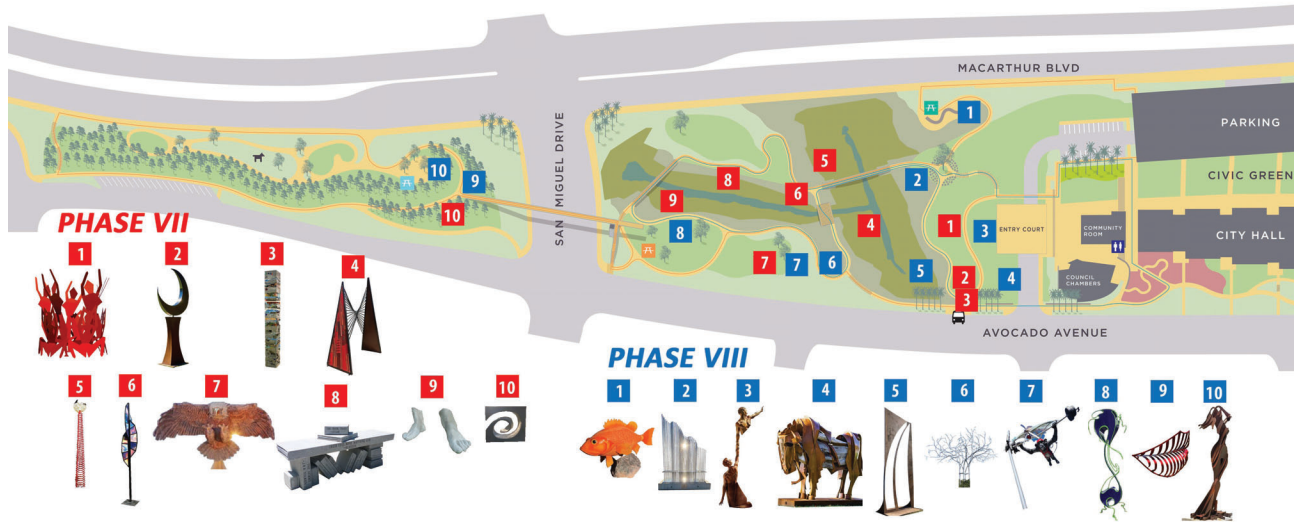


**NEWPORT BEACH CIVIC CENTER  
SCULPTURE EXHIBITION  
PHASE IX  
SUBMISSION QUALIFICATION MEETING**



**INTRODUCTIONS**





## **SELECTION CRITERIA:**

### **Artistic Merit:**

- Artwork is of high-quality and demonstrative of originality and artistic excellence
- Artist has strong professional qualifications

### **Durability:**

- The artwork is to be made of high-quality materials which can withstand the natural outdoor elements of coastal Southern California
- Artwork requires minimal to no maintenance

### **Practicality:**

- Artwork is of appropriate subject matter for audiences of all ages
- Artwork is safe and shall not exhibit unsafe conditions or factors that may bear on public liability

### **Site appropriateness:**

- Artwork is suitable in scale to be seen in environment
- Artwork is suitable for viewing from all angles

## **PUBLIC POLL SUMMARY:**

- Poll will be posted on Arts Orange County's website SparkOC.com
- All works qualified as eligible from this meeting will be included
- Participants can vote for up to three favorite works
- Security measures include:
  - Users required to complete a CAPTCHA form designed to catch bot behavior
  - Users required to submit a valid e-mail address and provide their ZIP code and city of residence, only votes from Newport Beach ZIP codes will be counted
- Order of depicted works will be shuffled at random every few days so that no work will enjoy any positioning advantage
- Poll to be promoted by Arts Orange County to e-mail subscribers and via social media. Sample images of submitted artwork, when used, will be chosen via random number generator
- Raw vote logs of both accepted and declined voting attempts will be examined to detect any patterns or voter behavior which, in Arts Orange County's judgment, may give rise to a misleading interpretation of the "voice of the community".
- Public poll results are non-binding and advisory, to be used in final jury discussions for selecting slate of Finalists.
- Poll will open Feb. 11 and close Mar. 11. Findings to be shared and discussed at regular Arts Commission meeting on Mar. 14.

**ELIGIBLE SUBMISSIONS  
AFTER PRELIMINARY REVIEW  
(71)**

**\*missing information has been requested from artists**



**Burmood, Jacob**  
**(Saint Joseph , MO)**  
*Depth of Form*

Size: 7' x 3' x 4'

Weight: 250 lbs.

Medium: Cold-cast aluminum on painted steel base

Jury Avg.: 6.13

Jury Ranking: 1



Burmood, Jacob. *Depth of Form*

**Daley, Catherine**  
**(Windsor, CA)**  
*Millefolium*

Size: 120"H x 40"W x 30"D

Weight: 145 lbs.

Medium: Stainless Steel, Loctite, clear caulking,  
barrier pad, shims, stainless concrete screws

Jury Avg.: 5.88

Jury Ranking: 2t



Daley, Catherine. *Millefolium*

**Douglas, Missy & Rask, Kim**  
**(aka uckiood)**  
*BIG PUFFA (The Generator)*

Size: 6'8"H x 5'8"W x 6'2"D

Weight: 400 lbs.

Medium: Hand-molded, sealed fiberglass shell with white polyester resin decorative skin. Within this white skin are embedded around 10000 3/4in, hand cast, highly-colored, translucent resin cylinders. This skin is then sanded multiple times to render an ultra-smooth and highly tactile finish, and is treated with layers of additional industrial sealant to protect from UV/external damage/extreme weather conditions.



Jury Avg.: 5.88

Jury Ranking: 2t

Douglas, Missy & Rask, Kim (aka uckiood). *BIG PUFFA (The Generator)*

**Moushey Dale, Michele**  
**(Edgerton, WI)**  
*Natural Wonders*

Size: 48" x 36" x 25"

Weight: 300 lbs.

Medium: Bronze

Jury Avg.: 5.75

Jury Ranking: 4



Moushey Dale, Michele. *Natural Wonders*

**Cartwright, Matt**  
**(Portland, OR)**  
*Trillium Bus Stop Bench*

Size: 13' tall, 7' diameter footprint

Weight: 450 lbs.

Medium: leaves/seats and stem are cold formed mild steel pipe and flat bar, powder coated primer and finish

The flower is made of aluminum tubing and flat bar, white powder coat. The flower details are stainless steel and clear amber acrylic.

Jury Avg.: 5.38

Jury Ranking: 5



Cartwright, Matt. *Trillium Bus Stop Bench*

**Debold, Cindy**  
**(Lago Vista, TX)**  
*Glee*

Size: 86"H x 28"W x 12"D

Weight: 50 lbs.

Medium: Stainless Steel

Jury Avg.: 5.25

Jury Ranking: 6t



Debold, Cindy. *Glee*

**Schader, Brian**  
**(Fountain Hills, AZ)**  
*Convergence III*

Size: 5' x 5' x 10'

Weight: 485 lbs. (incl. base)

Medium: Steel, stone and glass

Jury Avg.: 5.25

Jury Ranking: 6t



Schader, Brian. *Convergence III*

**Blazejovsky, Vojtech**  
**(Los Altos Hills, CA)**  
*Heavy Landing*

Size: 4.5'H x 2.5'W x 2.5'W

Weight: 60 lbs.

Medium: Metal sculpture. Made predominantly of stainless steel, with some elements of copper and brass. Finished in slate patina and pigment coloured waxes

Jury Avg.: 5.13

Jury Ranking: 8t



Blazejovsky, Vojtech. *Heavy Landing*

**Dallal, Joyce**  
**(Inglewood, CA)**  
*Shout it to the Wind*

Size: 8' x 7' x 11'

Weight: 150 lbs.

Medium: Steel, acrylic paint, printed papers collaged onto canvas and muslin, polyester thread, acrylic medium and polyurethane coating, zip ties

Jury Avg.: 5.13

Jury Ranking: 8t



Dallal, Joyce. *Shout it to the Wind*

**Kizziar, David**  
**(Laguna Beach, CA)**  
*Cubescape*

Size: 11'H x 9'W x 18"D

Weight: 475 lbs.

Medium: Wood and Metal

Jury Avg.: 5.13

Jury Ranking: 8t



Kizziar, David. *Cubescape*

**Susnea Litman, Adrian**  
**(Santa Rosa, CA)**  
*Frutti di Mare*

Size: 14'H, 8' diameter at top; base 24" x 24" x 1/4"

Weight: 350 lbs.

Medium: Corten and Stainless steel, kinetic

Jury Avg.: 5.13

Jury Ranking: 8t



Susnea Litman, Adrian. *Frutti di Mare*

**Rench, Chris**  
**(Hood River, OR)**  
*Caught Up II*

Size: 8' x 90" x 30"

Weight: 200 lbs.

Medium: Stainless and Mild Steel

Jury Avg.: 5.00

Jury Ranking: 12t



Rench, Chris. *Caught Up II*

**Sackett, Joe Forrest**  
**(Albuquerque, NM)**  
*Hypersonic*

Size: 101" x 48" x 40"

Weight: 100 lbs.

Medium: Painted & patinated steel, aluminum tube, plastic cone

Jury Avg.: 5.00

Jury Ranking: 12t



Sackett, Joe Forrest. *Hypersonic*

**Alderman, J. Aaron**  
**(Brevard, NC)**  
*Mind the Gap*

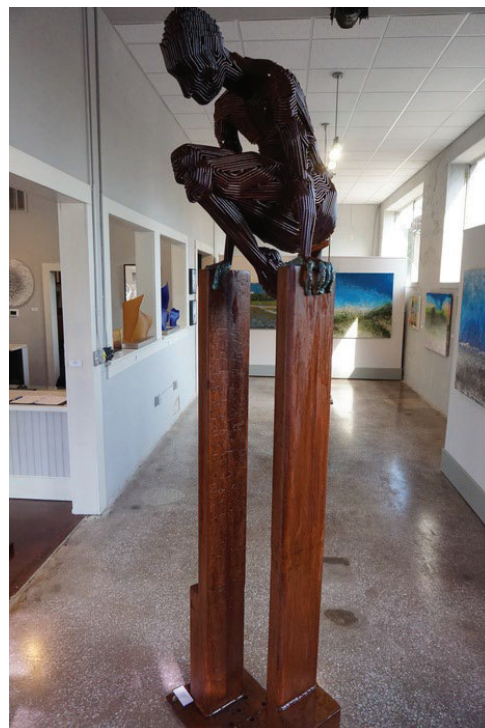
Size: 107" x 29" x 23"

Weight: 300 lbs.

Medium: Steel & Copper

Jury Avg.: 4.88

Jury Ranking: 14t



Alderman, J. Aaron. *Mind the Gap*

**Ambrosio, Peter**  
**(Tucson, AZ)**  
*Interplay*

Size: 8'x3'x2'

Weight: 150 lbs.

Medium: 1/4" Fabricated Steel, Alcohol Inks,  
Resin Coating

Jury Avg.: 4.88

Jury Ranking: 14t



Ambrosio, Peter. *Interplay*

**DeBruyne, Hilde**  
**(Cumming, IA)**  
*Growing Wings*

Size: 8'H x 4'W x 4'D

Weight: 600 lbs.

Medium: Metal, painted with Industrial  
Automotive Paint

Jury Avg.: 4.88

Jury Ranking: 14t



DeBruyne, Hilde. *Growing Wings*

**Ghosh, Shohini**  
**(Highlands Ranch, CO)**  
*Days Catch*

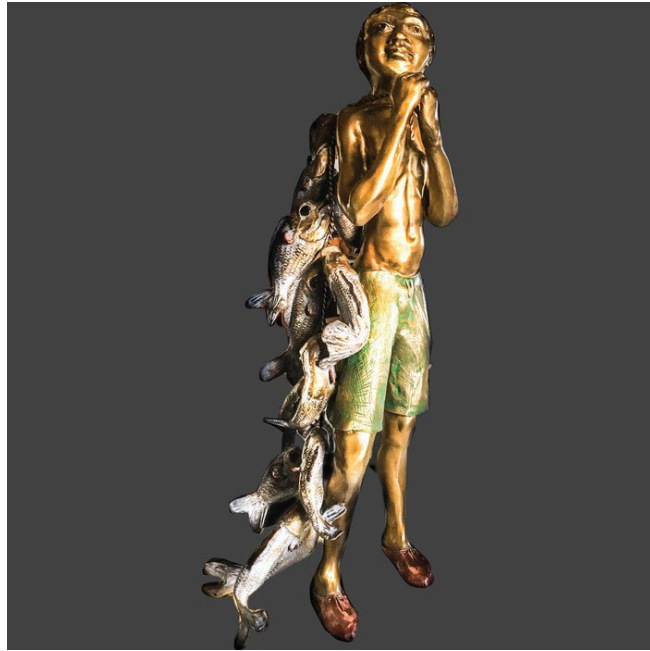
Size: 38" x 17" x 15"

Weight: 100 lbs.

Medium: Bronze

Jury Avg.: 4.88

Jury Ranking: 14t



Ghosh, Shohini. *Days Catch*

**Hassen, Peter**  
**(Sonoma, CA)**  
*Cycles 3: Frogs, Bees, Birds*

Size: 96"H x 96"W x 96"D

Weight: 1,600 lbs.

Medium: Corten steel with rust patina

Jury Avg.: 4.88

Jury Ranking: 14t



Hassen, Peter. *Cycles 3: Frogs, Bees, Birds*

**Lai, Mary**  
**(San Gabriel, CA)**  
*Dream Portal*

Size: 68"H x 48.5"W x 17"D

Weight: 250 lbs.

Medium: Extira wood with automotive paint

Jury Avg.: 4.88

Jury Ranking: 14t



Lai, Mary. *Dream Portal*

**Palumbo, Giuseppe**  
**(Eldorado Springs, CO)**  
*Duality*

Size: 8'6"H x 72"L x 28"D

Weight: n/a

Medium: Steel/Bronze

Jury Avg.: 4.88

Jury Ranking: 14t



Palumbo, Giuseppe. *Duality*

**Snider, Doug**  
**(San Diego, CA)**  
*Gecko*

Size: 5'H x 17'W x 6'D

Weight: 2,500 lbs.

Medium: Concrete, Polystyrene  
Foam, Steel

Jury Avg.: 4.88

Jury Ranking: 14t



Snider, Doug. *Gecko*

**Gornushkin, Sergey**  
**(San Diego, CA)**  
*RybaFish*

Size: Full - 10' diameter, 16' height, Pipes - 2" x 20'

Weight: 300 lbs.

Medium: steel pipe modular teepee structure  
interconnected with a bolted strut assembly, steel  
armature reinforced fiberglass fish head (decorated  
with riveted sealed leather mosaic, 1/2" hilty bolt  
on attachments, hurricane anchors and brackets;  
Low-voltage solar LED lights

Jury Avg.: 4.75

Jury Ranking: 22t



Gornushkin, Sergey. *RybaFish*

**Satow, Heath**  
**(Ogden, UT)**  
*Ligeia*

Size: 38" x 31" x 128"

Weight: 180 lbs.

Medium: 316 (Marine-grade) mirror-polished stainless steel

Jury Avg.: 4.75

Jury Ranking: 22t



Satow, Heath. *Ligeia*

**Whitacre, Ron**  
**(Laguna Beach, CA)**  
*Reaching Man*

Size: 10'3" X 2' X 2'

Weight: 75 lbs. (sculpture,) 35 lbs. (base)

Medium: Welded Steel coated in automotive paint

Jury Avg.: 4.75

Jury Ranking: 22t



Whitacre, Ron. *Reaching Man*

**Wright, D. Yoshikawa**  
**(Los Angeles, CA)**  
*Time and Awareness*

Size: 6'H x 6'W x 3'D

Weight: 6,500 lbs.

Medium: Italian marble / California  
black granite

Jury Avg.: 4.75

Jury Ranking: 22t



Wright, D. Yoshikawa. *Time and Awareness*

**Carollo, Reno**  
**(Aurora, CO)**  
*Expression 3*

Size: 72" x 24" x 60"

Weight: 40 pounds each total 120 pounds

Medium: ABS plastic 3D printed with Metal  
armature interiors on Aluminum Bases

Jury Avg.: 4.63

Jury Ranking: 26t



Carollo, Reno. *Expression 3*

**Worsham, Catherine**  
**(San Diego, CA)**  
*Catalyst Compass*

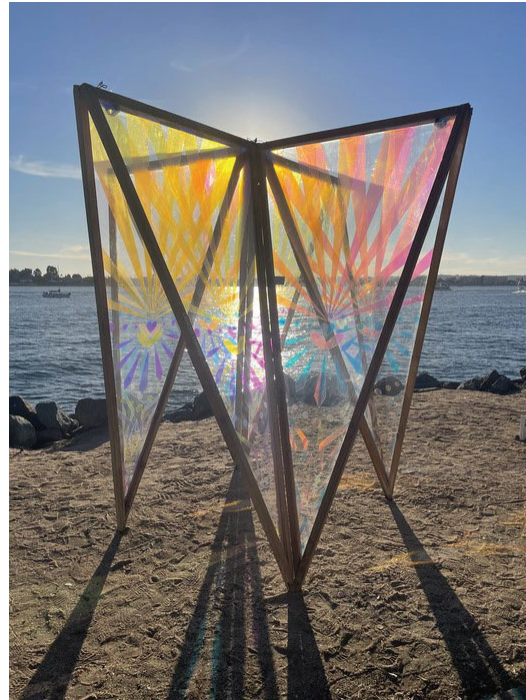
Size: 8' x 8' x 8'

Weight: 200 lbs.

Medium: Wood, Acrylic, Dichroic Film

Jury Avg.: 4.63

Jury Ranking: 26t



Worsham, Catherine. *Catalyst Compass*

**Saviskas, Paul**  
**(Inverness, FL)**  
*Natures Theater*

Size: 72" x 40" x 24"

Weight: 350 lbs.

Medium: Internal steel, wire screen, wood, rubber foam, concrete, stainless steel, mosaic glass tiles, stone epoxy, epoxy grout

Jury Avg.: 4.63

Jury Ranking: 26t



Saviskas, Paul. *Natures Theater*

**Grater, Steve**  
**(Tucson, AZ)**  
*Herald*

Size: 83”H x 20”W x 20”D

Weight: 200 lbs.

Medium: Stainless Steel

Jury Avg.: 4.50

Jury Ranking: 29t



Grater, Steve. *Herald*

**Ledversis, Don**  
**(Cranston, RI)**  
*Purple Grapes*

Size: 12’H x 11’W x 7’D

Weight: 800 lbs.

Medium: Aluminum, plastic, steel pipe

Jury Avg.: 4.50

Jury Ranking: 29t



Ledversis, Don. *Purple Grapes*

**Mitten, Peter**  
**(Fallbrook, CA)**  
*Momentum*

Size: 72”T x 48”W x 18”D

Weight: 130 lbs.

Medium: Fabricated aluminum

Jury Avg.: 4.50

Jury Ranking: 29t



Mitten, Peter. *Momentum*

**Poeschl, Troy**  
**(Laguna Beach, CA)**  
*Weathered Embrace*

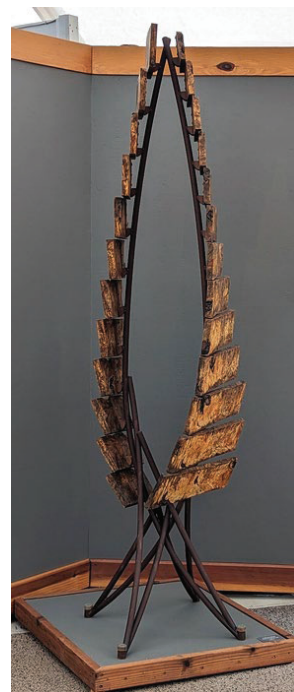
Size: 30” x 30” x 101”

Weight: 150 lbs.

Medium: Steel heavy wall 1” tubing and 3/4” x 1/8” cold roll bar welded, patina applied and protected for frame and supports. Stainless steel for the feet. Buckeye burl wood approximately 1” thick finished with outdoor Marine rated clear finish.

Jury Avg.: 4.50

Jury Ranking: 29t



Poeschl, Troy. *Weathered Embrace*

**Gall, Alex**  
**(Vista, CA)**  
*Over the Falls*

Size: 88" x 40" x 20" - base is 20" x 20"

Weight: 140 lbs.

Medium: n/a

Jury Avg.: 4.38

Jury Ranking: 33t



Gall, Alex. *Over the Falls*

**Ghyvoronsky, Jessica**  
**(Seattle, WA)**  
*Planted*

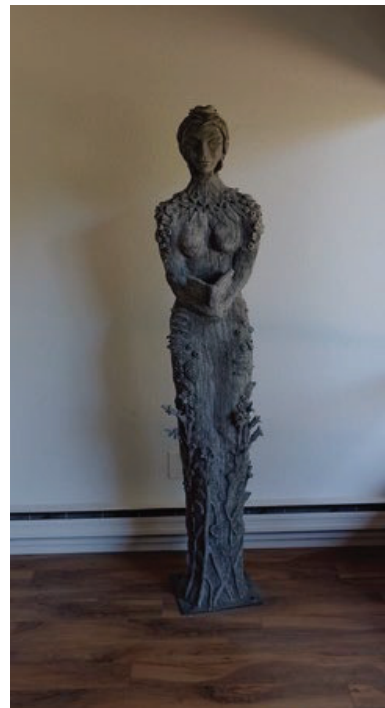
Size: 6' Tall, 30" Diameter

Weight: 200 lbs.

Medium: Pal Tiya Premium

Jury Avg.: 4.38

Jury Ranking: 33t



Ghyvoronsky, Jessica. *Planted*

**Scapini, Rossella**  
**(Berkeley, CA)**  
*Brigitta*

Size: 34" x 12" x 20"

Weight: 100 lb. (incl. pedestal)

Medium: Cast Bronze

Jury Avg.: 4.38

Jury Ranking: 33t



Scapini, Rossella. *Brigitta*

**Brill, Curt**  
**(Tucson, AZ)**  
*Dana*

Size: 54" x 48" x 48"

Weight: 500 lbs.

Medium: Bronze on a granite plinth

Jury Avg.: 4.25

Jury Ranking: 36t



Brill, Curt. *Dana*

**Scharling-Todd, Helle**  
**(Ventura, CA)**  
*Color Molecules*

Size: 13' x 6' x 4' (base 2' x 2')

Weight: 90 lbs.

Medium: Powder coated steel, and glass

Jury Avg.: 4.25

Jury Ranking: 36t



Scharling-Todd, Helle. *Color Molecules*

**Streeter, Lynne**  
**(Oakland, CA)**  
*One World*

Size: 34"H x 53"W x 60"D

Weight: 2,100 lbs.

Medium: Patinated bronze on a  
hollowed-out Verda Issorie  
marble base

Jury Avg.: 4.25

Jury Ranking: 36t



Streeter, Lynne. *One World*

**Witmer, Kelly**  
**(Yucca Valley, CA)**  
*Selective Memories*

Size: 7.5'H x 4'W x 3'D

Weight: 500 lbs.

Medium: Steel and glazed ceramic

Jury Avg.: 4.25

Jury Ranking: 36t



Witmer, Kelly. *Selective Memories*

**Alaniz, Reynaldo**  
**(Austin, TX)**  
*Maya Sentinel*

Size: 36"W x 60"L x 27"H (statue,) 42"W  
x 62"L x 4"H (base)

Weight: 314 lbs. (statue,) 60 lbs. (base)

Medium: cast bronze on steel base

Jury Avg.: 4.13

Jury Ranking: 40t



Alaniz, Reynaldo. *Maya Sentinel*

**Fisch, Samuel**  
**(Brooklyn, NY)**  
*Cuboctahedron*

Size: 5' x 5' x 5'

Weight: 100 lbs.

Medium: Post consumer plastic blocks  
in a steel armature

Jury Avg.: 4.13

Jury Ranking: 40t



Fisch, Samuel. *Cuboctahedron*

**Karg, Rollin**  
**(Kechi, KS)**  
*Stepping Stone*

Size: 8' x 26" x 29"

Weight: 300 lbs.

Medium: Stainless Steel with blown glass satellite

Jury Avg.: 4.13

Jury Ranking: 40t



Karg, Rollin. *Stepping Stone*

**Martin, Jim**  
**(Santa Barbara, CA)**  
*3X*

Size: 7'4"H x 2'6"W x 1'6"D

Weight: 148 lbs.

Medium: Corten Steel

Jury Avg.: 4.13

Jury Ranking: 40t



Martin, Jim. *3X*

**Ruppert, Abbi**  
**(Owensboro, KY)**  
*Revival*

Size: 12' x 10' x 6'

Weight: 2,000 lbs.

Medium: Steel, mortar, exterior paint

Jury Avg.: 4.13

Jury Ranking: 40t



Ruppert, Abbi. *Revival*

**Elliot, Marguerite**  
**(Fairfax, CA)**  
*Energy Waves*

Size: 120"-144" x 3" x 1/4"

Weight: Each piece approx. 30 lbs.

Medium: Stainless Steel

Jury Avg.: 4.00

Jury Ranking: 45t



Elliot, Marguerite. *Energy Waves*

**Sherman, Charles**  
**(Los Angeles, CA)**  
*The Point of Newport Beach*

Size: 19'8" x 24" x 4"

Weight: 600 lbs.

Medium: Corten steel

Jury Avg.: 4.00

Jury Ranking: 45t



Sherman, Charles. *The Point of Newport Beach*

**Banks, John**  
**(Henderson, NV)**  
*Art in Old English*

Size: 5'W x 5'L x 6'-10"H

Weight: 360 lbs.

Medium: Steel Pipes

Jury Avg.: 3.88

Jury Ranking: 47t



Banks, John. *Art in Old English*

**Katz, Ray**  
**(Pontiac, MI)**  
*Red/Green Construction*

Size: 16'H x 12'W x 5'D

Weight: 1,200 lbs.

Medium: Painted Steel

Jury Avg.: 3.88

Jury Ranking: 47t



Katz, Ray. *Red/Green Construction*

**Modrak, Judith**  
**(New York, NY)**  
*Seedlings*

Size: 5'6"H x 36"W x 42"D

Weight: n/a

Medium: Aqua resin cast with reinforced steel  
armature, protective all-weather coating

Jury Avg.: 3.88

Jury Ranking: 47t



Modrak, Judith. *Seedlings*

**Saint Georges, Eric**  
**(Santa Barbara, CA)**  
*Gorgeous for Ever II*

Size: 72" x 8" x 8"

Weight: 100 lbs.

Medium: Concrete cast. Acid stained in blue

Jury Avg.: 3.88

Jury Ranking: 47t



Saint Georges, Eric. *Gorgeous for Ever II*

**Harris, Anna Lee**  
**(Bonners Ferry, ID)**  
*River's Bounty*

Size: 8'H x 4'W x 4'D

Weight: 200 lbs.

Medium: Granite base on a pegged and industrial adhered powder coated installation plate, with two 1/2 inch holes for bolting down into concrete. Powder coated skeleton, holding granite fish which are industrial glued and screwed into the plates. Mechanically painted and cut strips of aluminum roofing create the multicolored currents, which are attached to the framework with heavy grade metal rivets.

Jury Avg.: 3.75

Jury Ranking: 51t



Harris, Anna Lee. *River's Bounty*

**Ho, Xuan**  
**(Woodside, CA)**  
*The World of Colors*

Size: 21"H x 36"L x 18"W

Weight: 80 lbs.

Medium: Vitreous glass, ceramic, gems.  
Polystyrene block base

Jury Avg.: 3.75

Jury Ranking: 51t



Ho, Xuan. *The World of Colors*

**Knecht, Zan**  
**(Grand Rapids, MI)**  
*The Wedge*

Size: 6' x 4' x 3'

Weight: 175 lbs.

Medium: Corten Steel

Jury Avg.: 3.75

Jury Ranking: 51t



Knecht, Zan. *The Wedge*

**Marquez, Andy (aka Socrates)**  
**(Keene, CA)**  
*Fire Team Up*

Size: n/a

Weight: 350 lbs.

Medium: Galvanized Steel, lumber, screws

Jury Avg.: 3.75

Jury Ranking: 51t



Marquez, Andy (aka Socrates). *Fire Team Up*

**Vader, Patricia  
(Martinez, CA)**  
*Shooting Star*

Size: 8'6"H x 5'W x 6'D

Weight: 20 lbs.

Medium: Steel and aluminum

Jury Avg.: 3.75

Jury Ranking: 51t



Vader, Patricia. *Shooting Star*

**Stafford, Vanessa  
(Santa Cruz, CA)**  
*Dove*

Size: 2'H x 2'W x 10"D

Weight: 15 lbs.

Medium: Epoxy, fiberglass, plexiglass, and  
LED lights

Jury Avg.: 3.63

Jury Ranking: 56



Stafford, Vanessa. *Dove*

**Raff, Marcia  
(Austin, TX)**

*Feynman's Fancy, Series III*

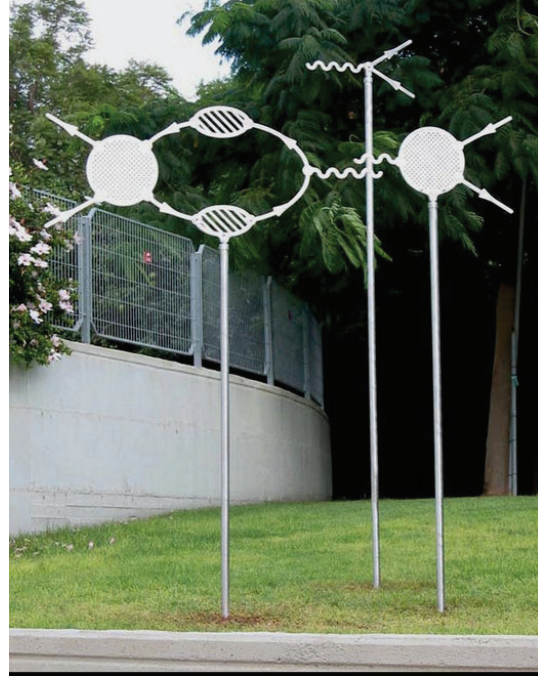
Size: Poles 109-122"H; Bases (x2) 21" x 21"

Weight: 55 lbs.

Medium: Stainless Steel

Jury Avg.: 3.50

Jury Ranking: 57



Raff, Marcia. *Feynman's Fancy, Series III*

**Johnson, Shawn  
(Seattle, WA)**

*Mesa Moon*

Size: 6'3"H x 3'3"W x 2'4"D

Weight: 250 lbs.

Medium: Steel, Industrial Oil-base paint by Rustoleum, Primer & Finish coats

Jury Avg.: 3.38

Jury Ranking: 58t



Johnson, Shawn. *Mesa Moon*

**Snyder, Craig**  
**(Plymouth, MN)**  
*Take it Easy*

Size: 10' x 4' x 4'

Weight: n/a

Medium: Aluminum

Jury Avg.: 3.38

Jury Ranking: 58t



Snyder, Craig. *Take it Easy*

**Wubbena, Chris**  
**(Jackson, MO)**  
*Home*

Size: 7'6" x 2' x 2'

Weight: 500 lbs.

Medium: Steel, acrylic, spray paint

Jury Avg.: 3.38

Jury Ranking: 58t



Wubbena, Chris. *Home*

**Allen, Peter**  
**(Morristown, NJ)**  
*Three Figures*

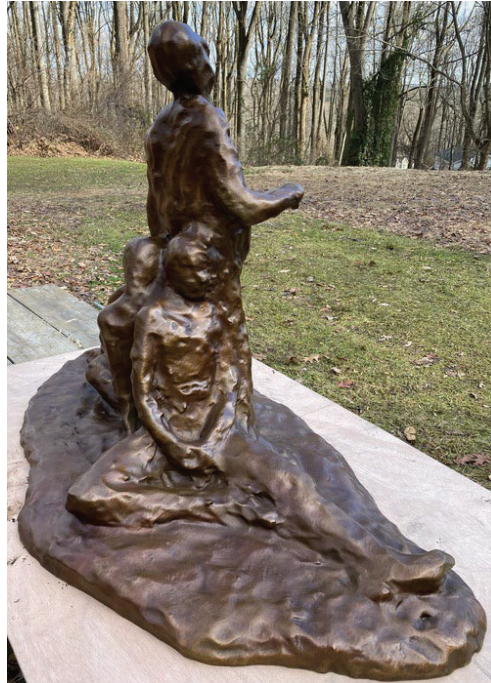
Size: 38" x 53" x 28"

Weight: 400 lbs.

Medium: Bronze

Jury Avg.: 3.25

Jury Ranking: 61t



Allen, Peter. *Three Figures*

**Bell, Jessica**  
**(Dallas, TX)**  
*Bond*

Size: 4' x 4' x 15"

Weight: 100 – 150 lbs.

Medium: Powder Coated Steel

Jury Avg.: 3.25

Jury Ranking: 61t



Bell, Jessica. *Bond*

**Gray, Craig**  
**(Key West, FL)**  
*Woodland Bench*

Size: 65" long x 20" wide x 36" tall

Weight: n/a

Medium: Granite

Jury Avg.: 3.25

Jury Ranking: 61t



Gray, Craig. *Woodland Bench*

**Holsapple, Dodd**  
**(Santa Monica, CA)**  
*Currents / Three Movements*

Size: 120"H x 42"L x 30"W

Weight: 135 lbs.

Medium: Steel

Jury Avg.: 3.25

Jury Ranking: 61t



Holsapple, Dodd. *Currents / Three Movements*

**Kuniholm, Paul**  
**(Seattle, WA)**  
*The Heart of Newport*

Size: 5'H

Weight: 60 lbs.

Medium: Mild steel coated with lacquer

Jury Avg.: 3.25

Jury Ranking: 61t



Kuniholm, Paul. *The Heart of Newport*

**Broth, Mickael**  
**(Richmond, VA)**  
*Bigger on the Inside*

Size: 8' x 1' x 1'

Weight: 50 lbs.

Medium: Welded aluminum, enamel, mirrored stainless steel

Jury Avg.: 3.00

Jury Ranking: 66



Broth, Mickael. *Bigger on the Inside*

**Hromadkova, Renata**  
**(Boulder, CO)**  
*BUBU*

Size: 17”H x 40”L x 33”W

Weight: 700 lbs.

Medium: Wood with aluminum plate

Jury Avg.: 2.88

Jury Ranking: 67t



Hromadkova, Renata. *BUBU*

**Lopez, Felipe**  
**(Tampa, FL)**  
*Anaconda*

Size: 1' x 1' x 4'

Weight: n/a

Medium: Metal

Jury Avg.: 2.88

Jury Ranking: 67t



Lopez, Felipe. *Anaconda*

**Fleites, Ferminius**  
**(Biscayne Park, FL)**  
*The Winner*

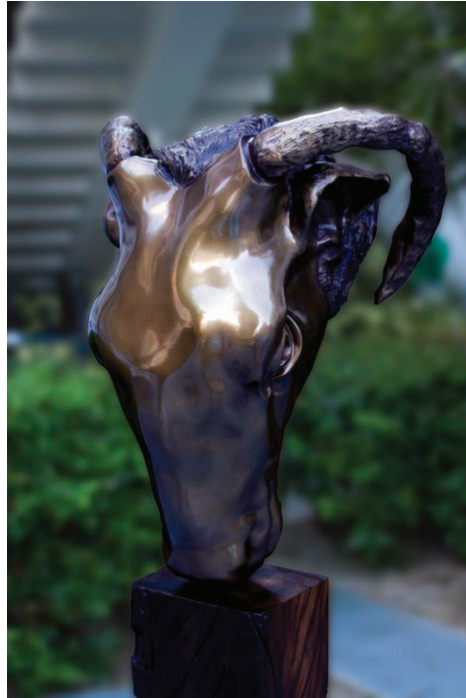
Size: 25" X 18.90" X 22.20"

Weight: 75 lbs.

Medium: Bronze and recycled wood

Jury Avg.: 2.75

Jury Ranking: 69



Fleites, Ferminius. *The Winner*

**Markessinis, Diana**  
**(Alameda, CA)**  
*The Supremes*

Size: 98"H x 37"W x 31"D

Weight: 175 lbs.

Medium: Steel and Marine grade Stainless Steel

Jury Avg.: 2.63

Jury Ranking: 70



Markessinis, Diana. *The Supremes*

**Sokolovskaya, Katerina**  
**(Brooklyn, NY)**  
*The Keeper/Running house*

Size: 23" x 13" x 22"

Weight: 30 lbs.

Medium: Acrylic polymer and acrylic paint

Jury Avg.: 2.13

Jury Ranking: 71



Sokolovskaya, Katerina. *The Keeper/Running house*

**NEXT STEPS**



**THANK YOU!**

