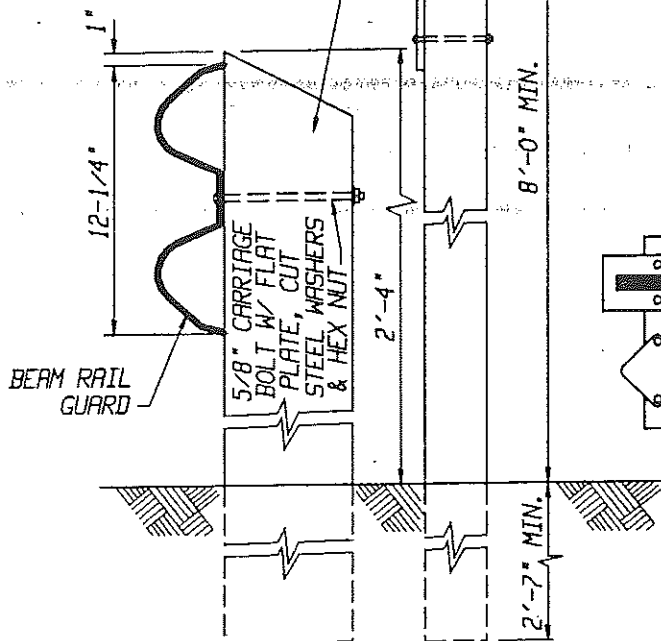


USE ONE OF THE FOLLOWING:

4" X 4" REDWOOD POST (S45) FOR DISPLAY OF TYPE N & W-31, W-56, OR W-57

8" X 8" REDWOOD POST (S45) @ 12'-6" O.C. MAX.



POST DETAIL

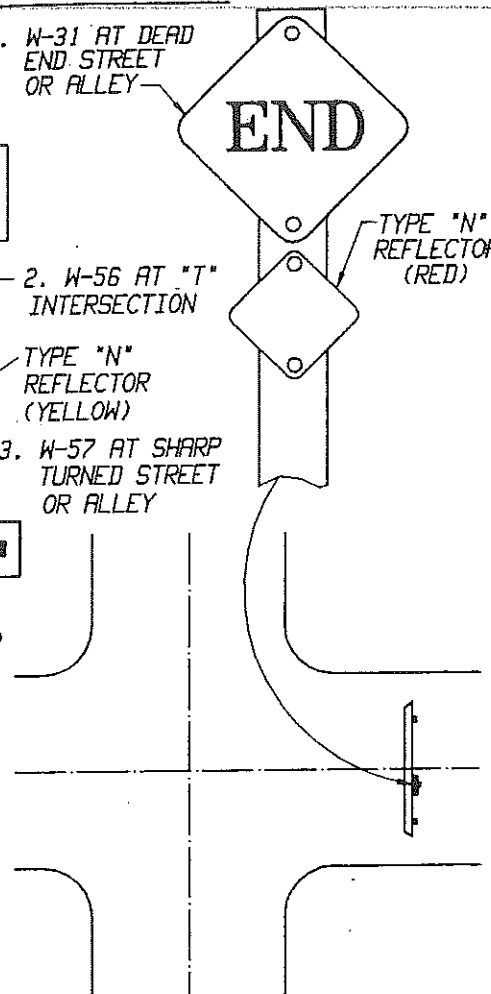
1. W-31 AT DEAD END STREET OR ALLEY

2. W-56 AT "T" INTERSECTION

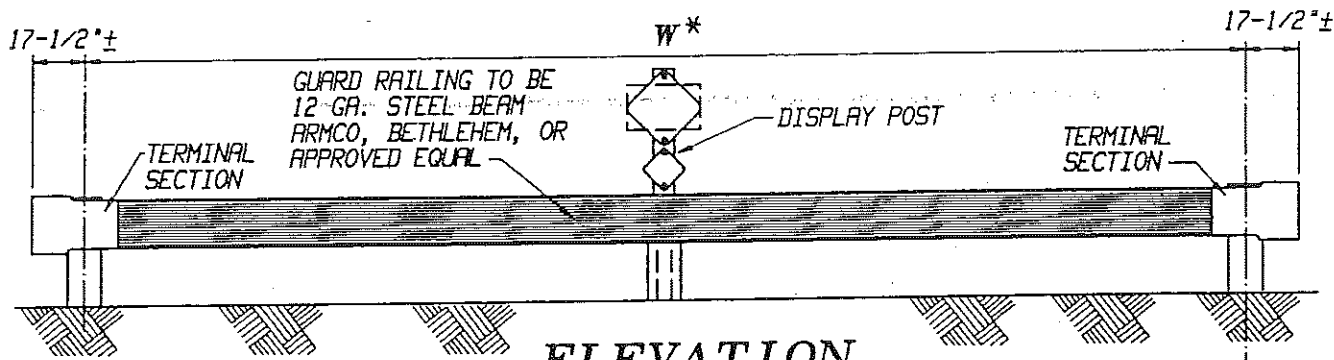
TYPE "N" REFLECTOR (YELLOW)

3. W-57 AT SHARP TURNED STREET OR ALLEY

TYPE "N" REFLECTOR (YELLOW)



PLAN



ELEVATION

ROAD WIDTH	W*
28' AND 32'	2 @ 12'-6" = 25'
36' AND 40'	3 @ 10'-0" = 30'
64'	4 @ 12'-6" = 50'

* UNLESS OTHERWISE SHOWN ON THE PLANS

NOTE:

ALL METAL PARTS INCLUDING RAILING TO BE HOT DIP GALVANIZED IN ACCORDANCE WITH CITY STANDARD SPECIFICATIONS

CITY OF NEWPORT BEACH
PUBLIC WORKS DEPARTMENT

**STANDARD STREET
BARRICADE**

APPROVED:

DIRECTOR OF PUBLIC WORKS
R.C.E. NO. 36106

DATE 7 Sep 1994 SCALE N.T.S.

DRAWN M. GRACIA STD-900-L