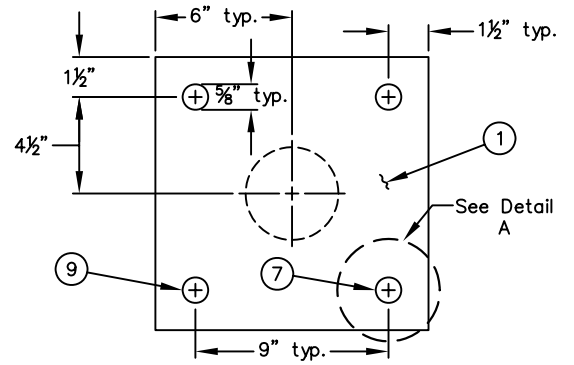
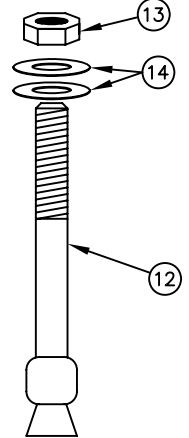


PROFILE VIEW: not to scale



PLAN VIEW: not to scale
Base plate drilling template



DETAIL A: not to scale
Base plate anchor bolt

CONSTRUCTION NOTES:

- ① Square steel plate. 12" x 12" x 0.375" thick.
- ② Black steel pipe support tube. 2.5" diameter x 14" long x 0.375" wall thickness.
- ③ Stainless steel (316 alloy) all thread rod. 2.0" diameter x 18" long. Tack weld to top hex nut.
- ④ Heavy hex head steel (304 alloy) nut.
- ⑤ Black steel flat bar stock. 1" wide x 12" long x 0.375" thick. Fillet weld to hex nut, one face, each nut. Delete in wastewater pump station applications.
- ⑥ Saddle support. Steel pipe bent open to accommodate same size pipe or rolled steel flat bar to match supported pipe or fitting flange O.D. 3" minimum width x 12" rolled length. Fillet weld hex nut to bottom of saddle support.
- ⑦ Install base plate on leveling course of high strength epoxy cement compound.
- ⑧ Coat threads with liberal amount of anti-seize compound.
- ⑨ Drill concrete pad or vault floor and mount base plate with 4 each. 1/2" stainless steel concrete anchor bolts. See base plate template.
- ⑩ Tighten double hex nuts snug against support tube. Use 60 ft. lbs. torque.
- ⑪ Tack weld all thread rod to heavy hex nut under support saddle.
- ⑫ Red head™ stainless steel concrete anchor bolt. 1/2" diameter x 4" long.
- ⑬ 1/2" stainless steel hex head anchor nut. Red head or approved equal.
- ⑭ 1" x 1/2" heavy stainless steel washers. Double stack on top of support plate.

GENERAL NOTES:

- 1. All pipe support components shall be hot dip galvanized after fabrication, with the exception of the all thread rod.
- 2. All pipe support components except the all thread rod shall be painted after field installation with an Alkyd Enamel paint system consisting of a 2 mil primer coat and 2. a 2 mil coat of high gloss enamel. Color shall be white, red or blue and shall match the supported piping & fittings.
- 3. Pipe supports shall be installed on all backflow prevention assemblies and as indicated for all vault installations. Refer to standard drawings STD-513, STD-514 & 3. STD-521.
- 4. For an alternatives pipe support contact the Utilities Department representative.

CITY OF NEWPORT BEACH
PUBLIC WORKS DEPARTMENT

PIPE SUPPORT ASSEMBLY

APPROVED:

RCE NO. 36106

PUBLIC WORKS DIRECTOR

Drawn: M. Elias

Scale: N.T.S.

Date: Jan. 2004

F:\USERS\PBW\Shared\CAD STDs
STD Details\2003 - Std\STD Water

DRAWING NO.

STD-522-L