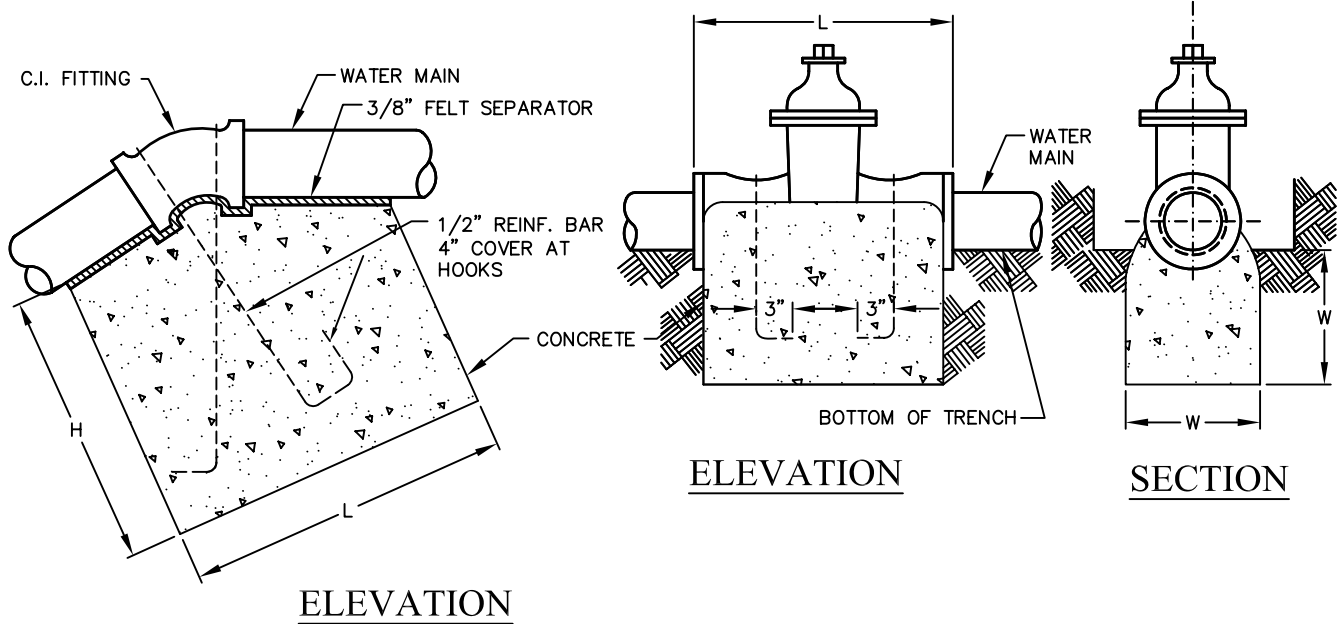



<i>ANCHOR BLOCK DIMENSIONS L=H=W IN FEET</i>			
<i>FITTING & SIZE</i>	<i>22-1/2 BENDS</i>	<i>45 BENDS</i>	<i>VALVES</i>
4"	1.9	2.4	1.5
6"	2.5	3.1	2.0
8"	3.1	3.8	2.5
10"	3.5	4.4	3.0
12"	4.0	5.0	3.5
14"	4.4	5.5	4.0
16"	5.0	6.0	4.5
18"	5.3	6.5	5.0



VERTICAL BEND ANCHORS VALVE ANCHORS

1. WATER MAIN PRESSURE TESTS SHALL BE PERFORMED SUBSEQUENT TO THE CURING REQUIRED IN FOOTNOTE 1 OF THE CONCRETE CLASS USE TABLE, STANDARD SPECIFICATIONS, SECTION 201-1.1.12
2. ANCHOR BLOCKS, WHERE REQUIRED, SHALL BE POURED AGAINST UNDISTURBED SOIL, BACK FILL COMPACTED TO 100% RELATIVE COMPACTION OR CLASS 100 E 100 SLURRY.
3. DIMENSIONS L, H AND W ARE COMPUTED FOR TEST PRESSURES OF 225 PSI IN FORCE MAINS LAID IN SANDY SILT WITH AT LEAST 3 FEET OF COVER.
4. DIMENSIONS L, H, AND W SHALL BE APPROVED BY THE ENGINEER FOR THOSE WATER MAINS WHICH (A) ARE NOT POURED AGAINST UNDISTURBED SOIL, COMPACTED BACK FILL OR SLURRY, (B) WILL BE TESTED TO MORE THAN 225 PSI, OR (C) ARE NOT REPRESENTED BY A FITTING OR SIZE SHOWN HEREON.
5. JOINT FASTENERS SHALL NOT BE EMBEDDED IN CONCRETE.
6. PORTIONS OF REINFORCING STEEL NOT EMBEDDED IN CONCRETE SHALL BE COATED WITH HOT TAR, ENAMEL, HOT DIP GALVANIZING OR COLD APPLIED BITUMASTIC MATERIAL.
7. NO ANCHOR BLOCKS SHALL BE REQUIRED FOR VALVES IN WATER MAINS LESS THAN 8" DIAMETER.

<p>CITY OF NEWPORT BEACH PUBLIC WORKS DEPARTMENT</p>	<p>APPROVED:</p>  <p>PUBLIC WORKS DIRECTOR</p>
<h1>ANCHOR BLOCK DETAIL I</h1>	<p>RCE NO. 36106</p>
	<p>Drawn: M. Elias</p>
	<p>Date: Jan. 2004</p>
<p>DRAWING NO.</p>	<p>Scale: N.T.S.</p> <p>F:\USERS\PBW\Shared\CAD STD\STD Details\2003 - Std\STD Water</p> <h1>STD-510-L-D</h1>