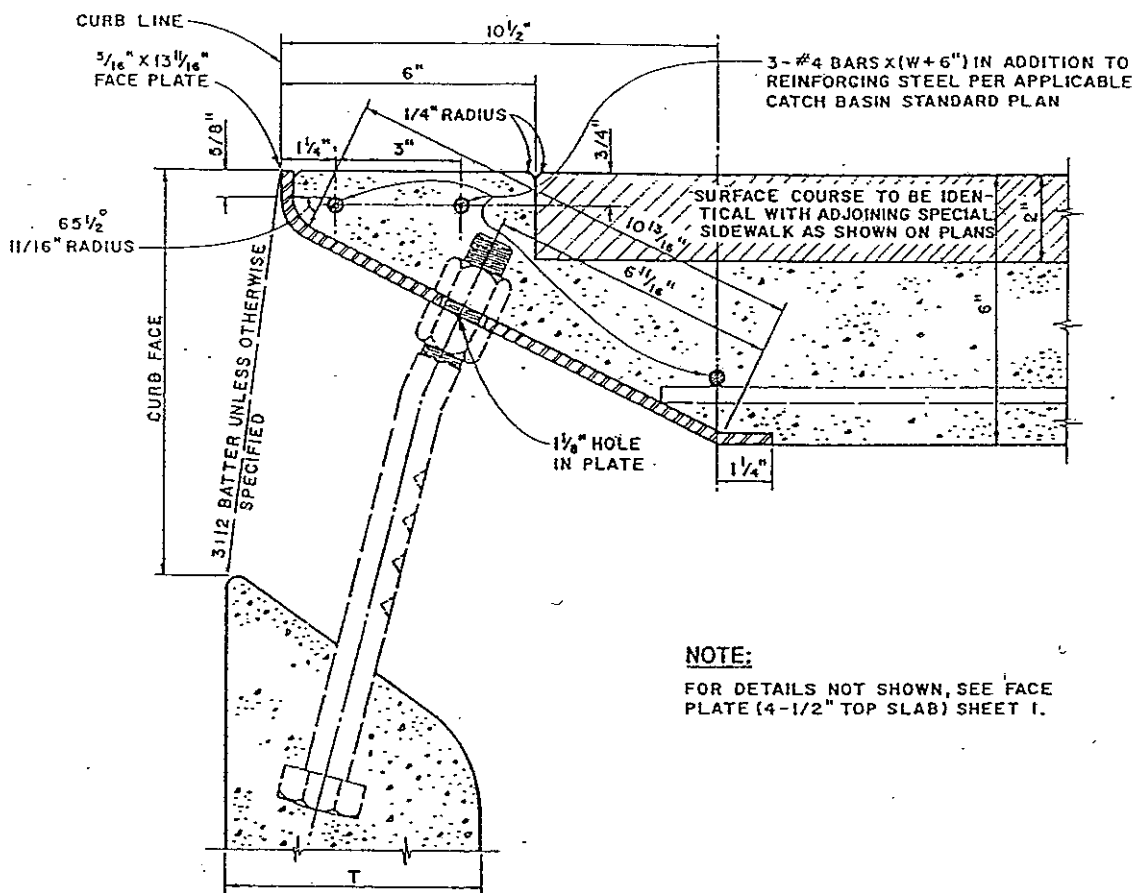


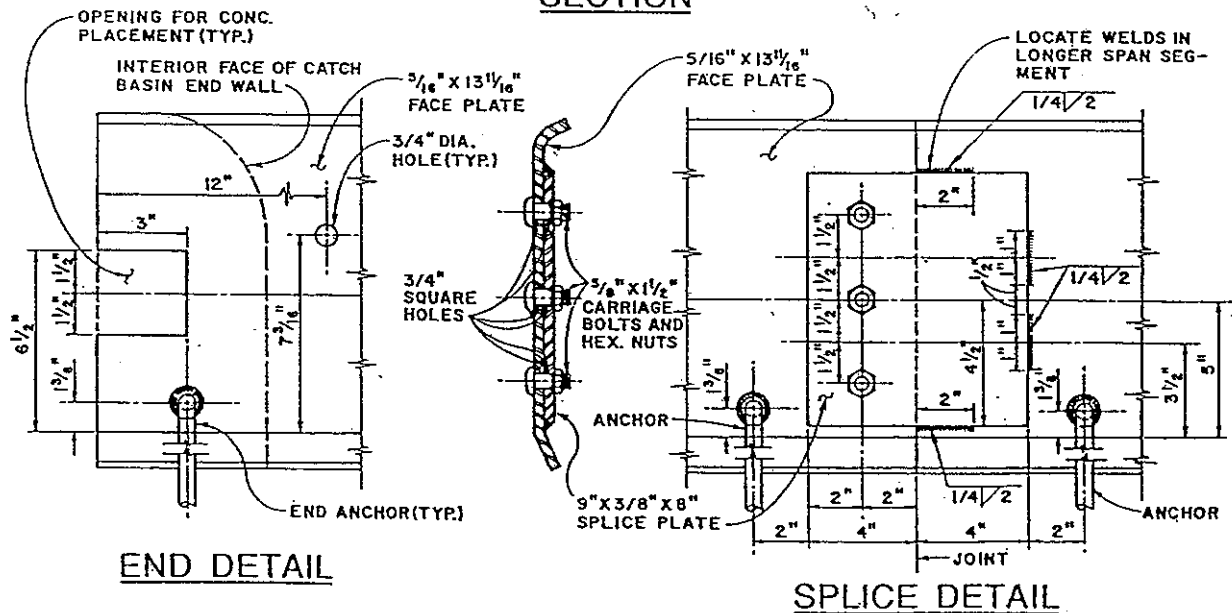
SUPPORT BOLT AND FACE PLATE (6" TOP SLAB)



NOTE:

FOR DETAILS NOT SHOWN, SEE FACE PLATE (4-1/2" TOP SLAB) SHEET I.

SECTION



END DETAIL

SPLICE DETAIL

ADOPTED FROM AMERICAN PUBLIC WORKS ASSOCIATION STANDARD PLAN 310-0

CITY OF NEWPORT BEACH
PUBLIC WORKS DEPARTMENT

CATCH BASIN FACE PLATE ASSEMBLY
AND PROTECTION BAR FOR 6" TOP SLAB

DRAWN F.T. DATE 1/15/91

APPROVED


PUBLIC WORKS DIRECTOR
R.E. NO. 36106

DRAWING NO. STD-316-L-B