

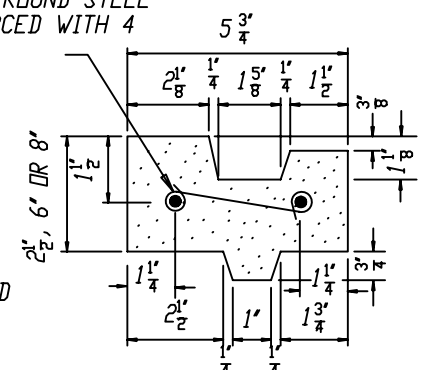
VERTICAL SECTION OF
REINFORCED CONCRETE
ECCENTRIC MANHOLE SHAFT

VERTICAL SECTION OF
PLAIN CONCRETE
ECCENTRIC MANHOLE SHAFT

NOTES:

1. ALL JOINTS SHALL BE FILLED WITH 1-2 CLASS C MORTAR AND NEATLY POINTED OR WIPED ON INSIDE OF SHAFT.
2. MANHOLE FRAME AND COVER PER STD-112-L WITH LETTER "D" IN CENTER OF COVER SURFACE OF LETTER SHALL FLUSH WITH FINISHED SURFACE OF COVER.
3. PRESSURE MANHOLE FRAME AND COVER SHALL BE ALHAMBRA FOUNDRY A-1500 OR APPROVED EQUAL, WITH LETTER "D" IN CENTER OF COVER, SURFACE OF LETTER SHALL FLUSH WITH FINISHED SURFACE OF COVER.
4. ECCENTRIC MANHOLE SHAFT, REDUCER AND RINGS MAY BE PLAIN CONCRETE. FOR UNREINFORCED SECTIONS, THE MINIMUM THICKNESS SHALL BE 6 INCHES.
5. TOP STEP SHALL BE PLACED DIRECTLY BENEATH THE MANHOLE COVER FRAME EXCEPT WHERE SHOWN OTHERWISE, SPACING OF STEPS IN SHAFT SHALL BE 12 INCHES ON CENTER. SEE STD.-404-L.

2-1/2" RINGS SHALL BE REINFORCED WITH TWO 1/4" ROUND STEEL HOOPS; 6 INCH AND 8 INCH RINGS SHALL BE REINFORCED WITH 4 HOOPS, TIED WITH NO. 14 A.S. & W. GA. WIRE 8" O.C.



SECTION OF
R.C. RING

ADOPTED FROM LACDPW STD. DWG. NO. 3029-0

REF. STD.-112-L; STD-404-L

REV. 9/93

CITY OF NEWPORT BEACH
PUBLIC WORKS DEPARTMENT
CONCRETE RINGS, REDUCER
AND SHAFT FOR
STORM DRAIN MANHOLE

APPROVED:		
_____ DIRECTOR OF PUBLIC WORKS R.C.E. NO. 12806		
DATE	15 Nov 1993	SCALE N.T.S.
DRAWN	M. GRACIA	STD-309-L