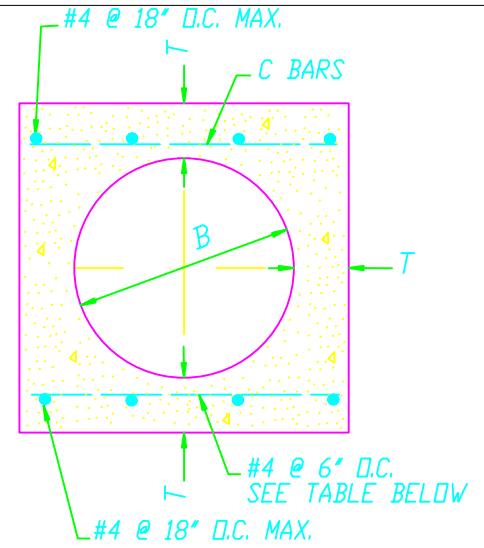


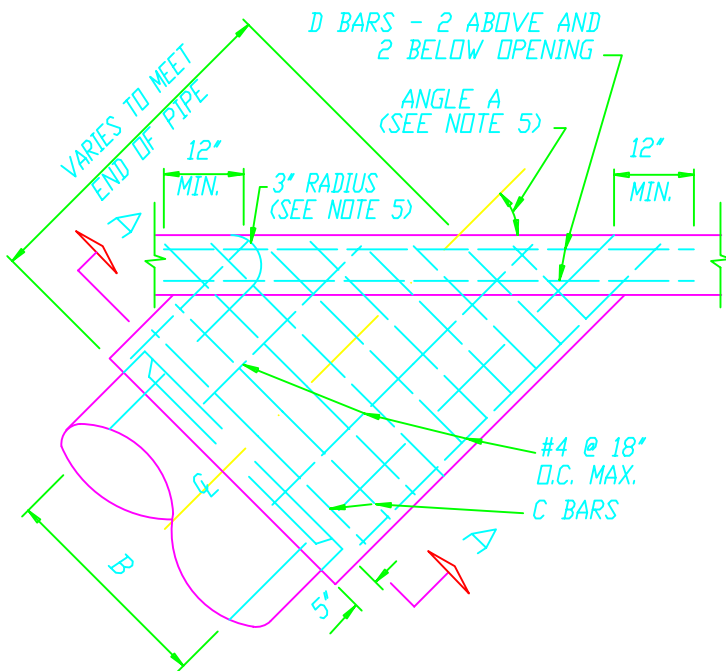
PLAN-CORNER CONNECTION



SECTION A-A

NOTES:

1. REINFORCING STEEL SHALL BE 1-1/2" CLEAR FROM FACE OF CONCRETE UNLESS OTHERWISE SHOWN.
2. REINFORCING STEEL FOR INSIDE FACE OF CURB INLET BASIN SHALL BE CUT AT CENTER OF OPENING AND BENT INTO WALLS OF MONOLITHIC CONNECTION. REINFORCING STEEL FOR OUTSIDE FACE OF CATCH BASIN WALL SHALL BE CUT 2" CLEAR OF OPENING.
3. CONNECTION SHALL BE POURED MONOLITHIC WITH CURB INLET. THE ROUNDED EDGE OF OUTLET SHALL BE CONSTRUCTED BY POURING CONCRETE AGAINST A CURVED FORM WITH A RADIUS OF 3".
4. FLOOR OF STRUCTURE SHALL BE STEEL-TROWELED TO SPRING LINE.
5. CONNECTIONS SHALL BE CONSTRUCTED WHEN:
  - (A) PIPES, 12" THRU 72" IN DIAMETER, INLET OR OUTLET THRU CORNER OF CURB INLET.
  - (B) ANGLE A, FOR PIPES 24" THRU 30" IN DIAMETER, IS 70° OR LESS.
  - (C) PIPE, 33" THRU 72" IN DIAMETER, INLET OR OUTLET THRU THE SIDE WALL OF CURB INLET.



PLAN - SIDE CONNECTION

B	T	C BARS	D & E BARS	B	T	C BARS	D & E BARS
12"	4"	#4 @ 6" O.C.	#5	42"	7 1/2"	#5 @ 6" O.C.	#6
15"	4 1/4"			45"	7 3/4"		
18"	4 1/2"			48"	8"		
21"	5"			51"	8 1/2"		
24"	5 1/4"			54"	9"		
27"	5 1/2"			57"	9 1/4"		
30"	6"			60"	9 1/2"		
33"	6 1/4"			63"	10"		
36"	6 1/2"			66"	10 1/4"		
39"	7"			69"	10 3/4"		
				72"	11"		

REV. 9/93

CITY OF NEWPORT BEACH  
PUBLIC WORKS DEPARTMENT

CONNECTION TO CURB INLET  
FOR PIPES  
12 INCHES TO 72 INCHES

APPROVED:

DIRECTOR OF PUBLIC WORKS  
R.C.E. NO. 36106

DATE	28 Sep 1993	SCALE	N.T.S.
DRAWN	M. GRACIA		STD-303-L