

susiecakes bakeshop
2043 westcliff drive, suite 104
newport beach, ca 92660
apn: 117-631-26

JOHN CLARKE ARCHITECTS

100 BERRY
NEWPORT BEACH
CA 92660



APPROVED:

JAMES TEE
City Plan, Safety Plans & Survey
BY FARMER
BY SANIT
BY FIRE
BY PWS
BY ZONING
BY PLANNING
DATE: 06-21-2007
BY: [Signature]

PROJECT INFORMATION

OWNER	ALSO (GROUP) INC. PM
ARCHITECT	JOHN CLARKE ARCHITECTS
PROJECT DESCRIPTION	THE SCOPE OF THE PROJECT IS THE TEAROUT AND RECONSTRUCTION OF AN EXISTING 10,000 SQ. FT. COMMERCIAL SPACE TO A MAJOR RETAIL BAKERY AND RESTAURANT. A MAJOR RETAIL BAKERY.

CODE ANALYSIS

CONTRACT GROUP - R	TYPE - 1/4"
CONSTRUCTION TYPE - 1	TYPE - 1/4"
SPACING - 16	TYPE - 1/4"
NUMBER OF STOREYS - 1	TYPE - 1/4"
OCCUPANT LOAD ANALYSIS	SEE SCHEDULE
SEISMIC ANALYSIS	SEE SCHEDULE
WIND ANALYSIS	SEE SCHEDULE
SOIL ANALYSIS	SEE SCHEDULE

SYMBOLS

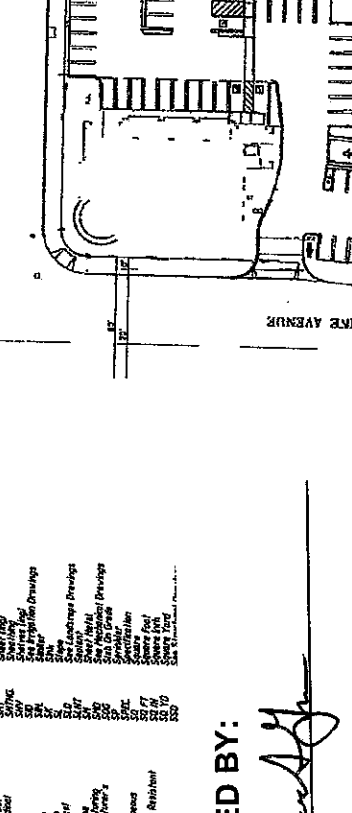
Door Number	1/4" Circle with Number
Window Number	1/4" Circle with Number
Section Number	1/4" Circle with Number
Grid Line	1/4" Circle with Letter
Structural Steel	Hatched Pattern
Concrete	Diagonal Hatching
Reinforcing Steel	Circle with Dot
Foundation	Diagonal Hatching
Roof	Diagonal Hatching
Wall	Diagonal Hatching
Floor	Diagonal Hatching
Column	Circle with Number
Beam	Circle with Number
Joist	Circle with Number
Truss	Circle with Number
Brace	Circle with Number
Diaphragm	Circle with Number
Partition Type	Circle with Number

PROJECT DESCRIPTION

THE SCOPE OF THE PROJECT IS THE TEAROUT AND RECONSTRUCTION OF AN EXISTING 10,000 SQ. FT. COMMERCIAL SPACE TO A MAJOR RETAIL BAKERY AND RESTAURANT. A MAJOR RETAIL BAKERY.

DRAWING INDEX

1 - ARCHITECTURE PLAN (GENERAL)
2 - ARCHITECTURE PLAN (ELEVATIONS)
3 - ARCHITECTURE PLAN (DETAILS)



VICINITY MAP

ABBREVIATIONS

AA	As Shown
AB	As Proposed
AC	As Constructed
AD	As Detailed
AE	As Elected
AF	As Fitted
AG	As Given
AH	As Handed
AI	As Installed
AJ	As Jointed
AK	As Keened
AL	As Laid
AM	As Made
AN	As Nailed
AO	As Offered
AP	As Proposed
AQ	As Quoted
AR	As Ruled
AS	As Shown
AT	As Treated
AU	As Used
AV	As Valued
AW	As Wished
AX	As X-rayed
AY	As Yarned
AZ	As Zoned
BA	As Banded
BB	As Banded
BC	As Banded
BD	As Banded
BE	As Banded
BF	As Banded
BG	As Banded
BH	As Banded
BI	As Banded
BJ	As Banded
BK	As Banded
BL	As Banded
BM	As Banded
BN	As Banded
BO	As Banded
BP	As Banded
BQ	As Banded
BR	As Banded
BS	As Banded
BT	As Banded
BU	As Banded
BV	As Banded
BW	As Banded
BX	As Banded
BY	As Banded
BZ	As Banded
CA	As Banded
CB	As Banded
CC	As Banded
CD	As Banded
CE	As Banded
CF	As Banded
CG	As Banded
CH	As Banded
CI	As Banded
CJ	As Banded
CK	As Banded
CL	As Banded
CM	As Banded
CN	As Banded
CO	As Banded
CP	As Banded
CQ	As Banded
CR	As Banded
CS	As Banded
CT	As Banded
CU	As Banded
CV	As Banded
CW	As Banded
CX	As Banded
CY	As Banded
CZ	As Banded
DA	As Banded
DB	As Banded
DC	As Banded
DD	As Banded
DE	As Banded
DF	As Banded
DG	As Banded
DH	As Banded
DI	As Banded
DJ	As Banded
DK	As Banded
DL	As Banded
DM	As Banded
DN	As Banded
DO	As Banded
DP	As Banded
DQ	As Banded
DR	As Banded
DS	As Banded
DT	As Banded
DU	As Banded
DV	As Banded
DW	As Banded
DX	As Banded
DY	As Banded
DZ	As Banded

APPROVED BY:

[Signature]

Planning Director
 Planning Commission
 As Submitted
 Zoning Administrator
 City Council
 As Modified

Refer to: Resolution 3
 Approval Letter

of Pgs Approved: 3 Date: 12/14/07

WESTCLIFF SQUARE SITE PLAN

2043 WESTCLIFF DRIVE
NEWPORT BEACH, CA

REVISIONS:

NO.	DATE	DESCRIPTION
1	12/14/07	Initial Issue
2	12/14/07	Revised Per City Council
3	12/14/07	Revised Per City Council
4	12/14/07	Revised Per City Council
5	12/14/07	Revised Per City Council
6	12/14/07	Revised Per City Council
7	12/14/07	Revised Per City Council
8	12/14/07	Revised Per City Council
9	12/14/07	Revised Per City Council
10	12/14/07	Revised Per City Council
11	12/14/07	Revised Per City Council
12	12/14/07	Revised Per City Council
13	12/14/07	Revised Per City Council
14	12/14/07	Revised Per City Council
15	12/14/07	Revised Per City Council
16	12/14/07	Revised Per City Council
17	12/14/07	Revised Per City Council
18	12/14/07	Revised Per City Council
19	12/14/07	Revised Per City Council
20	12/14/07	Revised Per City Council
21	12/14/07	Revised Per City Council
22	12/14/07	Revised Per City Council
23	12/14/07	Revised Per City Council
24	12/14/07	Revised Per City Council
25	12/14/07	Revised Per City Council
26	12/14/07	Revised Per City Council
27	12/14/07	Revised Per City Council
28	12/14/07	Revised Per City Council
29	12/14/07	Revised Per City Council
30	12/14/07	Revised Per City Council
31	12/14/07	Revised Per City Council
32	12/14/07	Revised Per City Council
33	12/14/07	Revised Per City Council
34	12/14/07	Revised Per City Council
35	12/14/07	Revised Per City Council
36	12/14/07	Revised Per City Council
37	12/14/07	Revised Per City Council
38	12/14/07	Revised Per City Council
39	12/14/07	Revised Per City Council
40	12/14/07	Revised Per City Council
41	12/14/07	Revised Per City Council
42	12/14/07	Revised Per City Council
43	12/14/07	Revised Per City Council
44	12/14/07	Revised Per City Council
45	12/14/07	Revised Per City Council
46	12/14/07	Revised Per City Council
47	12/14/07	Revised Per City Council
48	12/14/07	Revised Per City Council
49	12/14/07	Revised Per City Council
50	12/14/07	Revised Per City Council

EXISTING SITE BY AN
 PA2007-218 for UP2007-026
 2043 WESTCLIFF DRIVE
 DATE OF MEETING: .

GENERAL NOTES:

1. CONSULTOR SHALL BE RESPONSIBLE FOR PROVIDING THE INFORMATION REQUIRED BY THE APPLICANT TO OBTAIN ALL NECESSARY PERMITS AND ALL LOCAL REGULATIONS AND ORDINANCES THAT APPLY TO THE PROJECT AND THE APPLICANT'S RESPONSIBILITIES.
2. ALL CONSTRUCTION SHALL BE IN ACCORDANCE WITH THE LATEST EDITIONS OF THE CALIFORNIA BUILDING CODE, MECHANICAL CODE, ELECTRICAL CODE, AND ALL LOCAL ORDINANCES AND REGULATIONS.
3. ALL WORK SHALL BE DONE IN ACCORDANCE WITH THE LATEST EDITIONS OF THE CALIFORNIA BUILDING CODE, MECHANICAL CODE, ELECTRICAL CODE, AND ALL LOCAL ORDINANCES AND REGULATIONS.
4. ALL WORK SHALL BE DONE IN ACCORDANCE WITH THE LATEST EDITIONS OF THE CALIFORNIA BUILDING CODE, MECHANICAL CODE, ELECTRICAL CODE, AND ALL LOCAL ORDINANCES AND REGULATIONS.
5. ALL WORK SHALL BE DONE IN ACCORDANCE WITH THE LATEST EDITIONS OF THE CALIFORNIA BUILDING CODE, MECHANICAL CODE, ELECTRICAL CODE, AND ALL LOCAL ORDINANCES AND REGULATIONS.
6. ALL WORK SHALL BE DONE IN ACCORDANCE WITH THE LATEST EDITIONS OF THE CALIFORNIA BUILDING CODE, MECHANICAL CODE, ELECTRICAL CODE, AND ALL LOCAL ORDINANCES AND REGULATIONS.
7. ALL WORK SHALL BE DONE IN ACCORDANCE WITH THE LATEST EDITIONS OF THE CALIFORNIA BUILDING CODE, MECHANICAL CODE, ELECTRICAL CODE, AND ALL LOCAL ORDINANCES AND REGULATIONS.
8. ALL WORK SHALL BE DONE IN ACCORDANCE WITH THE LATEST EDITIONS OF THE CALIFORNIA BUILDING CODE, MECHANICAL CODE, ELECTRICAL CODE, AND ALL LOCAL ORDINANCES AND REGULATIONS.
9. ALL WORK SHALL BE DONE IN ACCORDANCE WITH THE LATEST EDITIONS OF THE CALIFORNIA BUILDING CODE, MECHANICAL CODE, ELECTRICAL CODE, AND ALL LOCAL ORDINANCES AND REGULATIONS.
10. ALL WORK SHALL BE DONE IN ACCORDANCE WITH THE LATEST EDITIONS OF THE CALIFORNIA BUILDING CODE, MECHANICAL CODE, ELECTRICAL CODE, AND ALL LOCAL ORDINANCES AND REGULATIONS.

susiecakes bakeshop
 2043 westcliff drive, suite 104
 newport beach, ca 92660
 apn: 117-631-26

JOHN CLARK ARCHITECTS



PROJECT NO.	10000
DATE	10/15/10
SCALE	AS SHOWN
BY	JCL
CHECKED BY	JCL
DATE	10/15/10

A2

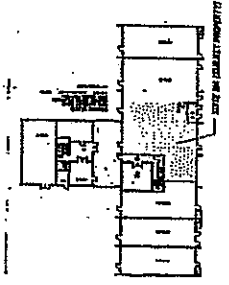
PAGE 2 OF 3



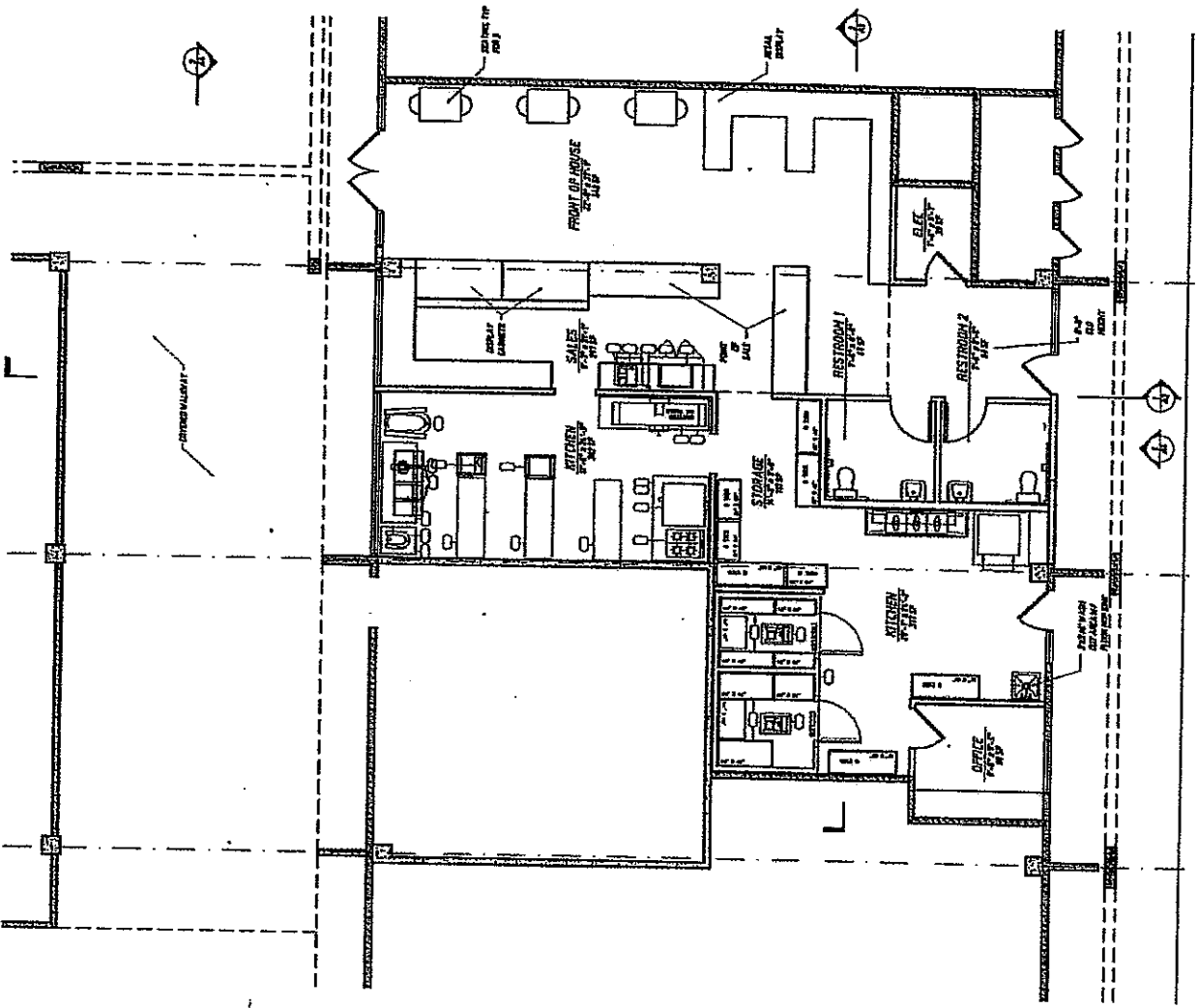
GENERAL NOTES:

1. CONSULTOR SHALL BE RESPONSIBLE FOR PROVIDING THE INFORMATION REQUIRED BY THE APPLICANT TO OBTAIN ALL NECESSARY PERMITS AND ALL LOCAL REGULATIONS AND ORDINANCES THAT APPLY TO THE PROJECT AND THE APPLICANT'S RESPONSIBILITIES.
2. ALL CONSTRUCTION SHALL BE IN ACCORDANCE WITH THE LATEST EDITIONS OF THE CALIFORNIA BUILDING CODE, MECHANICAL CODE, ELECTRICAL CODE, AND ALL LOCAL ORDINANCES AND REGULATIONS.
3. ALL WORK SHALL BE DONE IN ACCORDANCE WITH THE LATEST EDITIONS OF THE CALIFORNIA BUILDING CODE, MECHANICAL CODE, ELECTRICAL CODE, AND ALL LOCAL ORDINANCES AND REGULATIONS.
4. ALL WORK SHALL BE DONE IN ACCORDANCE WITH THE LATEST EDITIONS OF THE CALIFORNIA BUILDING CODE, MECHANICAL CODE, ELECTRICAL CODE, AND ALL LOCAL ORDINANCES AND REGULATIONS.
5. ALL WORK SHALL BE DONE IN ACCORDANCE WITH THE LATEST EDITIONS OF THE CALIFORNIA BUILDING CODE, MECHANICAL CODE, ELECTRICAL CODE, AND ALL LOCAL ORDINANCES AND REGULATIONS.
6. ALL WORK SHALL BE DONE IN ACCORDANCE WITH THE LATEST EDITIONS OF THE CALIFORNIA BUILDING CODE, MECHANICAL CODE, ELECTRICAL CODE, AND ALL LOCAL ORDINANCES AND REGULATIONS.
7. ALL WORK SHALL BE DONE IN ACCORDANCE WITH THE LATEST EDITIONS OF THE CALIFORNIA BUILDING CODE, MECHANICAL CODE, ELECTRICAL CODE, AND ALL LOCAL ORDINANCES AND REGULATIONS.
8. ALL WORK SHALL BE DONE IN ACCORDANCE WITH THE LATEST EDITIONS OF THE CALIFORNIA BUILDING CODE, MECHANICAL CODE, ELECTRICAL CODE, AND ALL LOCAL ORDINANCES AND REGULATIONS.
9. ALL WORK SHALL BE DONE IN ACCORDANCE WITH THE LATEST EDITIONS OF THE CALIFORNIA BUILDING CODE, MECHANICAL CODE, ELECTRICAL CODE, AND ALL LOCAL ORDINANCES AND REGULATIONS.
10. ALL WORK SHALL BE DONE IN ACCORDANCE WITH THE LATEST EDITIONS OF THE CALIFORNIA BUILDING CODE, MECHANICAL CODE, ELECTRICAL CODE, AND ALL LOCAL ORDINANCES AND REGULATIONS.

1" = 1'-0"	1" = 1'-0"	1" = 1'-0"
1" = 1'-0"	1" = 1'-0"	1" = 1'-0"
1" = 1'-0"	1" = 1'-0"	1" = 1'-0"
1" = 1'-0"	1" = 1'-0"	1" = 1'-0"
1" = 1'-0"	1" = 1'-0"	1" = 1'-0"
1" = 1'-0"	1" = 1'-0"	1" = 1'-0"
1" = 1'-0"	1" = 1'-0"	1" = 1'-0"
1" = 1'-0"	1" = 1'-0"	1" = 1'-0"
1" = 1'-0"	1" = 1'-0"	1" = 1'-0"
1" = 1'-0"	1" = 1'-0"	1" = 1'-0"



EXISTING BUILDING PLAN



PROPOSED FLOOR PLAN

REVISIONS:
see sheet labels - issued 11/2007

susiecakes bakeshop
2043 westcliff drive, suite 104
newport beach, ca 92660
apn: 117-631-26

JOHN CLARKE ARCHITECTS

100 WESTCLIFF DRIVE
NEWPORT BEACH, CA 92660
TEL: 949.441.1234
WWW.JOHNCLARKEARCHITECTS.COM

PROJECT:



DATE/TITLE:

PROPOSED EXTERIOR ELEVATION

NO. 1/1/08

NO. 1/1/08

NO. 1/1/08

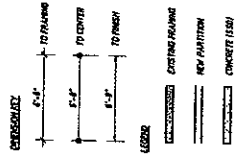
NO. 1/1/08

NO. 1/1/08

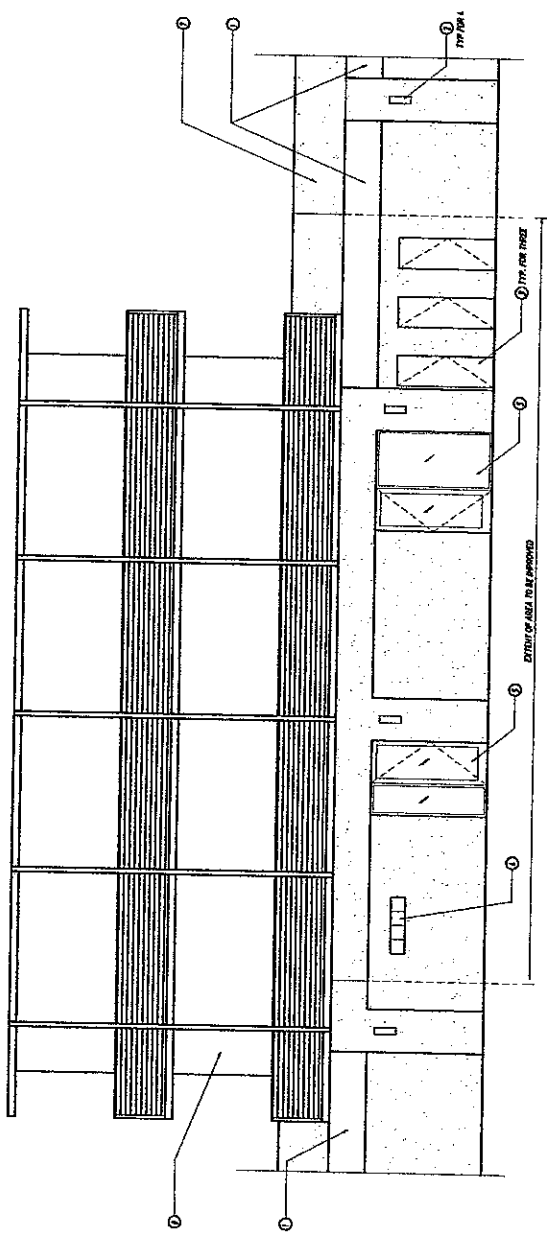
NO. 1/1/08

A4

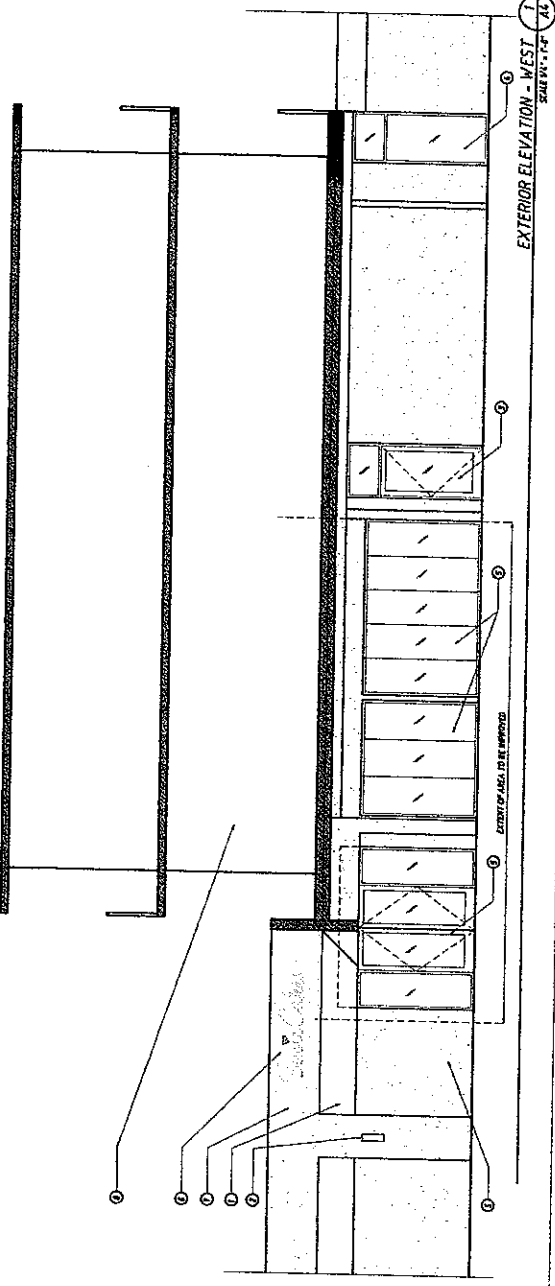
- EXTERIOR ELEVATION REVISIONS:
- 1) 1/1/08 - FINISH
 - 2) 1/1/08 - FINISH
 - 3) 1/1/08 - FINISH
 - 4) 1/1/08 - FINISH
 - 5) 1/1/08 - FINISH
 - 6) 1/1/08 - FINISH
 - 7) 1/1/08 - FINISH
 - 8) 1/1/08 - FINISH
 - 9) 1/1/08 - FINISH
 - 10) 1/1/08 - FINISH
 - 11) 1/1/08 - FINISH
 - 12) 1/1/08 - FINISH
 - 13) 1/1/08 - FINISH
 - 14) 1/1/08 - FINISH
 - 15) 1/1/08 - FINISH
 - 16) 1/1/08 - FINISH
 - 17) 1/1/08 - FINISH
 - 18) 1/1/08 - FINISH
 - 19) 1/1/08 - FINISH
 - 20) 1/1/08 - FINISH
 - 21) 1/1/08 - FINISH
 - 22) 1/1/08 - FINISH
 - 23) 1/1/08 - FINISH
 - 24) 1/1/08 - FINISH
 - 25) 1/1/08 - FINISH
 - 26) 1/1/08 - FINISH
 - 27) 1/1/08 - FINISH
 - 28) 1/1/08 - FINISH
 - 29) 1/1/08 - FINISH
 - 30) 1/1/08 - FINISH
 - 31) 1/1/08 - FINISH
 - 32) 1/1/08 - FINISH
 - 33) 1/1/08 - FINISH
 - 34) 1/1/08 - FINISH
 - 35) 1/1/08 - FINISH
 - 36) 1/1/08 - FINISH
 - 37) 1/1/08 - FINISH
 - 38) 1/1/08 - FINISH
 - 39) 1/1/08 - FINISH
 - 40) 1/1/08 - FINISH
 - 41) 1/1/08 - FINISH
 - 42) 1/1/08 - FINISH
 - 43) 1/1/08 - FINISH
 - 44) 1/1/08 - FINISH
 - 45) 1/1/08 - FINISH
 - 46) 1/1/08 - FINISH
 - 47) 1/1/08 - FINISH
 - 48) 1/1/08 - FINISH
 - 49) 1/1/08 - FINISH
 - 50) 1/1/08 - FINISH
 - 51) 1/1/08 - FINISH
 - 52) 1/1/08 - FINISH
 - 53) 1/1/08 - FINISH
 - 54) 1/1/08 - FINISH
 - 55) 1/1/08 - FINISH
 - 56) 1/1/08 - FINISH
 - 57) 1/1/08 - FINISH
 - 58) 1/1/08 - FINISH
 - 59) 1/1/08 - FINISH
 - 60) 1/1/08 - FINISH
 - 61) 1/1/08 - FINISH
 - 62) 1/1/08 - FINISH
 - 63) 1/1/08 - FINISH
 - 64) 1/1/08 - FINISH
 - 65) 1/1/08 - FINISH
 - 66) 1/1/08 - FINISH
 - 67) 1/1/08 - FINISH
 - 68) 1/1/08 - FINISH
 - 69) 1/1/08 - FINISH
 - 70) 1/1/08 - FINISH
 - 71) 1/1/08 - FINISH
 - 72) 1/1/08 - FINISH
 - 73) 1/1/08 - FINISH
 - 74) 1/1/08 - FINISH
 - 75) 1/1/08 - FINISH
 - 76) 1/1/08 - FINISH
 - 77) 1/1/08 - FINISH
 - 78) 1/1/08 - FINISH
 - 79) 1/1/08 - FINISH
 - 80) 1/1/08 - FINISH
 - 81) 1/1/08 - FINISH
 - 82) 1/1/08 - FINISH
 - 83) 1/1/08 - FINISH
 - 84) 1/1/08 - FINISH
 - 85) 1/1/08 - FINISH
 - 86) 1/1/08 - FINISH
 - 87) 1/1/08 - FINISH
 - 88) 1/1/08 - FINISH
 - 89) 1/1/08 - FINISH
 - 90) 1/1/08 - FINISH
 - 91) 1/1/08 - FINISH
 - 92) 1/1/08 - FINISH
 - 93) 1/1/08 - FINISH
 - 94) 1/1/08 - FINISH
 - 95) 1/1/08 - FINISH
 - 96) 1/1/08 - FINISH
 - 97) 1/1/08 - FINISH
 - 98) 1/1/08 - FINISH
 - 99) 1/1/08 - FINISH
 - 100) 1/1/08 - FINISH



QA
PAGE 3 OF 3



EXTERIOR ELEVATION - EAST
SCALE: 1/4" = 1'-0"



EXTERIOR ELEVATION - WEST
SCALE: 1/4" = 1'-0"